

## OMNIA — AMELS



**Builder:** [AMELS](#)

**Year Built:** 1974

**Model:** expedition yacht

**Price:** €23,000,000 EUR

**Location:** Greece

**LOA:** 200' 2" (61mm)

**Beam:** 34.77

**Max Draft:** 13' 2" (4mm)

**Cruise Speed:** 11 Knots Kts. (13 MPH)

**Max Speed:** 13 Knots Kts. (15 MPH)

Our experienced yacht broker, Andrey Shestakov, will help you choose and buy a yacht that best suits your needs **OMNIA — AMELS** from our catalogue. Presently, at Shestakov Yacht Sales Inc., we have a wide variety of yachts available on our sale's list. We also work in close contact with all the big yacht manufacturers from all over the world.

If you would like to buy a yacht **OMNIA — AMELS** or would like help answering any questions concerning purchasing, selling or chartering a yacht, please call **+1(954)274-4435**

# TABLE OF CONTENTS

TABLE OF CONTENTS	2
SPECIFICATIONS	5
Overview	5
Basic Information	5
Dimensions	5
Speed, Capacities and Weight	6
Accommodations	6
Hull and Deck Information	6
Engine Information	6
PHOTOS	7
AMELS 61m Aerial 2	7
AMELS 61m Main Deck Saloon	7
AMELS 61m Main Deck Corridor	7
AMELS 61m Dining Area	7
AMELS 61m Upper Deck Saloon	7
AMELS 61m Upper Deck Saloon 2	7
AMELS 61m Guest Cabin 1	8
AMELS 61m Guest Cabin 2 (Double)	8
AMELS 61m Guest Cabin 2 Bathroom	8
AMELS 61m Guest Cabin 3 (Double)	8
AMELS 61m Guest Cabin 3 Bathroom	8
AMELS 61m Guest Cabin 4 (Twin)	8
AMELS 61m Guest Cabin 5 (Double)	9
AMELS 61m Guest Cabin 5 (Double)	9
AMELS 61m Guest Cabin 5 (Double)	9
AMELS 61m Kids cabin (en suite)	9
AMELS 61m VIP Cabin	9
AMELS 61m VIP Cabin Bathroom	9

AMELS 61m Master Cabin Wardrobe	10
AMELS 61m Master Cabin	10
AMELS 61m Master Cabin Bathroom	10
AMELS 61m Aerial 3 (night)	10
AMELS 61m Sauna Lower Deck	10
AMELS 61m Beauty area Lower Deck	10
AMELS 61m Hammam Lower Deck	11
AMELS 61m Massage room Lower Deck	11
AMELS 61m Aerial 4	11
AMELS 61m Bow Tenders	11
AMELS 61m Profile Tenders	11
AMELS 61m Profile Tenders 2	11
AMELS 61m Beach area	12
AMELS 61m Sun Deck Jacuzzi	12
AMELS 61m Aerial Port Side	12
AMELS 61m Aerial 5	12
AMELS 61m Aerial 6	12
AMELS 61m Aerial 6	12
AMELS 61m Upper Deck Side Corridor	13
AMELS 61m Upper Deck Aft	13
AMELS 61m Upper Deck Aft	13
AMELS 61m Sun Deck Aft	13
AMELS 61m Bridge	13
AMELS 61m Main Deck Port Side	13
AMELS 61m Upper Deck Jacuzzi Lounge Area	14
AMELS 61m Main Deck Side Ladder	14
AMELS 61m Upper Deck Aft 3	14
CONTACTS	15
Contact details	15

---

Telephones	15
Office hours	15
Address	15

---

# SPECIFICATIONS

---

## Overview

---

OMNIA's Amels pedigree has been nurtured since her original launch. She recently (May 2022) underwent a 14-month comprehensive structural, mechanical and cosmetic refit. Transformed into a nautical masterpiece, this former North Sea pilot vessel now graces the seas as a breathtaking luxury yacht.

Impeccably refurbished and upgraded, she boasts a stunning newly built superstructure designed by Jonny Horsfield of H2 design. From the Jacuzzi-adorned Sun Deck to the opulent interior renovation, no detail has been spared. With enhanced machinery and state-of-the-art amenities, she welcomes up to 16 guests and is fully RINA classified.

OMNIA was nominated for best Refit for Boat international **World Superyacht Awards 2023**.

## KEY FEATURES

- Amels pedigree
- Excellent ownership and maintenance history
- Only ever privately used

## Basic Information

---

**Category:** expedition yacht

**Sub Category:** Expedition or Explorer

**Model Year:** 1974

**Year Built:** 1974

**Refit Type:** Rebuild/Conversion

**Country:** Greece

## Dimensions

---

**LOA:** 200' 2" (61mm)

**Beam:** 34.77

**Max Draft:** 13' 2" (4mm)

---

## Speed, Capacities and Weight

---

**Cruise Speed:** 11 Knots Kts. (13 MPH)

**Cruise Speed Range:** 6500

**Max Speed:** 13 Knots Kts. (15 MPH)

**Gross Tonnage:** 972 Pounds

**Water Capacity:** 47100 Gallons

**Fuel Capacity:** 29058.93 Gal Gallons

---

## Accommodations

---

**Total Cabins:** 8

---

## Hull and Deck Information

---

**Hull Material:** Steel

**Exterior Designer:** H2 Design

**Interior Designer:** H2 Design

---

## Engine Information

---

**Engines:** 3

**Manufacturer:** Deutz

**Fuel Type:** Diesel

# PHOTOS

**AMELS 61m Aerial 2**



**AMELS 61m Main Deck Saloon**



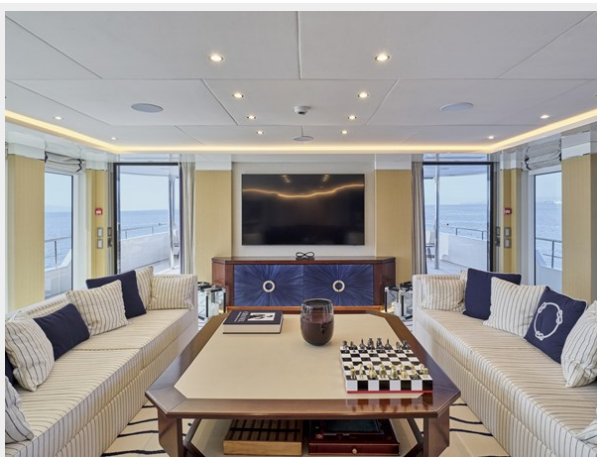
**AMELS 61m Main Deck Corridor**



**AMELS 61m Dining Area**



**AMELS 61m Upper Deck Saloon**



**AMELS 61m Upper Deck Saloon 2**



**AMELS 61m Guest Cabin 1**



**AMELS 61m Guest Cabin 2 (Double)**



**AMELS 61m Guest Cabin 2 Bathroom**



**AMELS 61m Guest Cabin 3 (Double)**



**AMELS 61m Guest Cabin 3 Bathroom**



**AMELS 61m Guest Cabin 4 (Twin)**





**AMELS 61m Guest Cabin 5 (Double)**



**AMELS 61m Guest Cabin 5 (Double)**



**AMELS 61m Guest Cabin 5 (Double)**



**AMELS 61m Kids cabin (en suite)**



**AMELS 61m VIP Cabin**



**AMELS 61m VIP Cabin Bathroom**



**AMELS 61m Master Cabin**



**AMELS 61m Master Cabin Wardrobe**



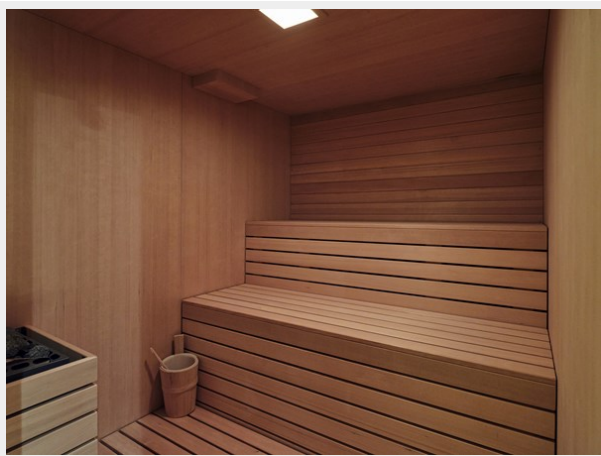
**AMELS 61m Master Cabin Bathroom**



**AMELS 61m Aerial 3 (night)**



**AMELS 61m Sauna Lower Deck**



**AMELS 61m Beauty area Lower Deck**



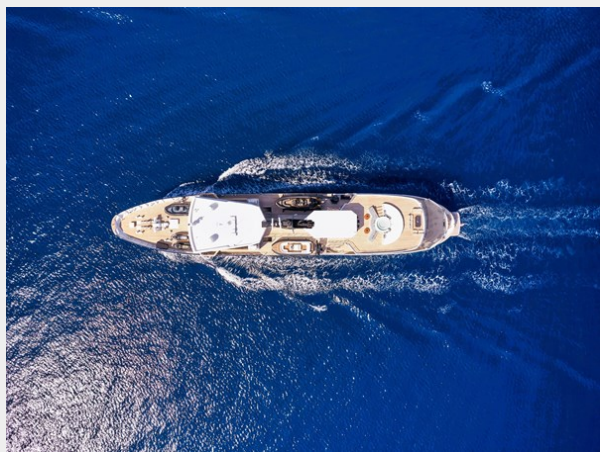
**AMELS 61m Hammam Lower Deck**



**AMELS 61m Massage room Lower Deck**



**AMELS 61m Aerial 4**



**AMELS 61m Bow Tenders**



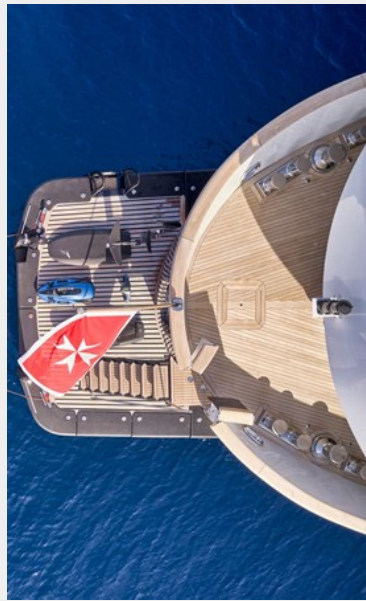
**AMELS 61m Profile Tenders**



**AMELS 61m Profile Tenders 2**



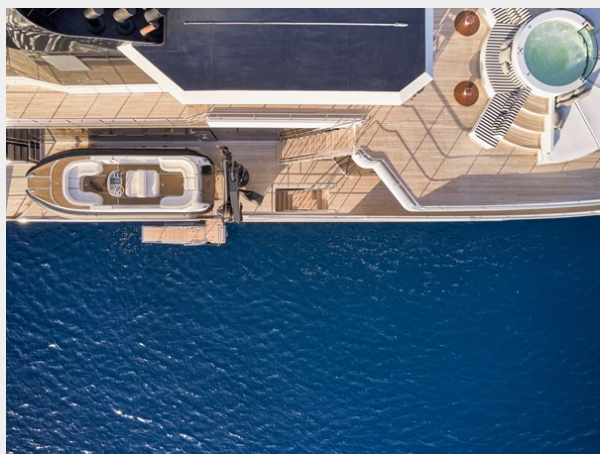
**AMELS 61m Beach area**



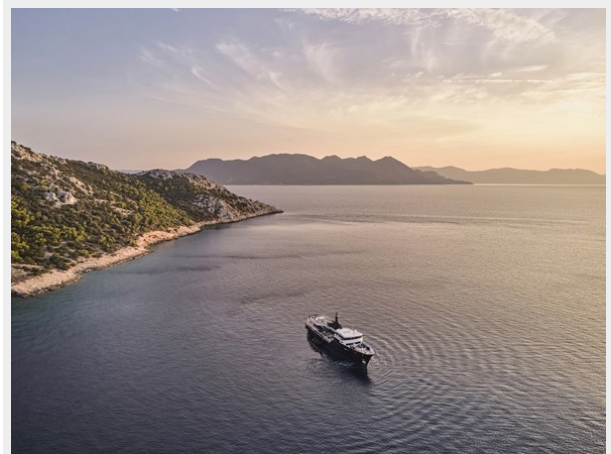
**AMELS 61m Sun Deck Jacuzzi**



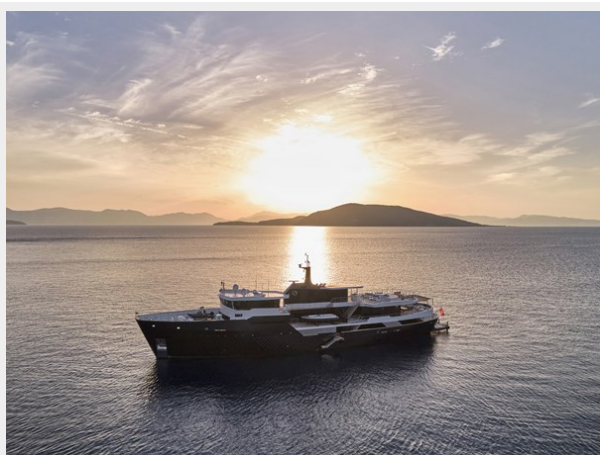
**AMELS 61m Aerial Port Side**



**AMELS 61m Aerial 5**



**AMELS 61m Aerial 6**



**AMELS 61m Aerial 6**



**AMELS 61m Upper Deck Side Corridor**



**AMELS 61m Upper Deck Aft**



**AMELS 61m Upper Deck Aft**



**AMELS 61m Sun Deck Aft**



**AMELS 61m Bridge**



**AMELS 61m Main Deck Port Side**



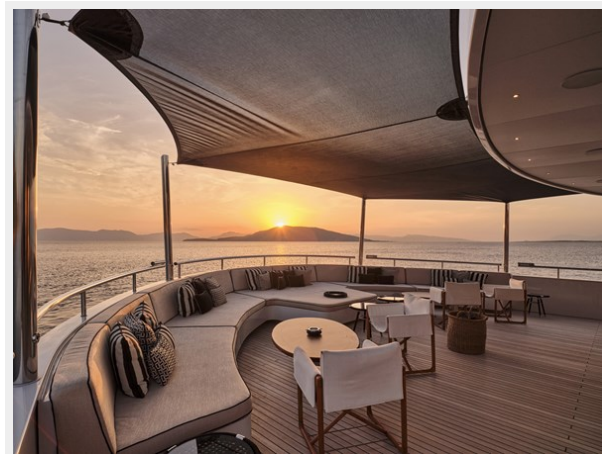
**AMELS 61m Main Deck Side Ladder**



**AMELS 61m Upper Deck Jacuzzi Lounge Area**



**AMELS 61m Upper Deck Aft 3**



---

# CONTACTS

---

Andrey Shestakov, leading yacht broker of the sales department of Shestakov Yacht Sales Inc. Shestakov Yacht Sales Inc., the official representative of the Miami/Fort Lauderdale FL headquarters.

---

## Contact details

---

Email: [andrey@shestakovyachtsales.com](mailto:andrey@shestakovyachtsales.com)

Web: [shestakovyachtsales.com/en/](http://shestakovyachtsales.com/en/)

---

## Telephones

---

USA: +1(954)274-4435

---

## Office hours

---

Monday – Saturday: **9:00 - 21:00** EDT

Sunday: **closed**

---

## Address

---



Harbour Towne Marina, 850 NE 3rd St,  
STE 213, Dania, FL 33004