

SEA JUNKIE — RICKY SCARBOROUGH



Builder: RICKY SCARBOROUGH

Year Built: 2008

Model: Sport Fisherman

Price: \$849,000 USD

Location: United States

LOA: 50' (15.24mm)

Beam: 15.5

Min Draft: 4' (1.22mm)

Max Draft: 4' 6" (1.37mm)

Cruise Speed: 28 Knots Kts. (32 MPH)

Max Speed: 34 Knots Kts. (39 MPH)

Our experienced yacht broker, Andrey Shestakov, will help you choose and buy a yacht that best suits your needs **Sea Junkie — RICKY SCARBOROUGH** from our catalogue. Presently, at Shestakov Yacht Sales Inc., we have a wide variety of yachts available on our sale's list. We also work in close contact with all the big yacht manufacturers from all over the world.

If you would like to buy a yacht **Sea Junkie — RICKY SCARBOROUGH** or would like help answering any questions concerning purchasing, selling or chartering a yacht, please call **+1(954)274-4435**

TABLE OF CONTENTS

TABLE OF CONTENTS	2
SPECIFICATIONS	3
Overview	3
Basic Information	3
Dimensions	3
Speed, Capacities and Weight	3
Accommodations	3
Hull and Deck Information	4
Engine Information	4
PHOTOS	5
CONTACTS	7
Contact details	7
Telephones	7
Office hours	7
Address	7

SPECIFICATIONS

Overview

"Sea Junkie" is one of the last boats built by Ricky Scarborough, Sr. She has a rich history. Built originally as the "Magic Moment" and has been in the hands of prominent sportfish teams such as "Sea Fix" and "Sportin' Life". She has always been maintained to the highest standard and has received numerous updates. Great visibility from the helm, great fishability, spacious cockpit, beautiful teak interior, incredible ride, and plenty of speed. Here's your chance to own one the prettiest Custom Carolina express boats ever built by a legendary North Carolina boat builder. Please contact central listing agent ***Ian Ballantyne*** for showings and details.

Basic Information

Category: Sport Fisherman

Model Year: 2008

Year Built: 2008

Country: United States

Dimensions

LOA: 50' (15.24mm)

Beam: 15.5

Min Draft: 4' (1.22mm)

Max Draft: 4' 6" (1.37mm)

Speed, Capacities and Weight

Cruise Speed: 28 Knots Kts. (32 MPH)

Max Speed: 34 Knots Kts. (39 MPH)

Water Capacity: 150 Gallons

Fuel Capacity: 960 Gal Gallons

Accommodations

Total Cabins: 1

Total Heads: 1

Hull and Deck Information

Hull Material: Fiberglass

Engine Information

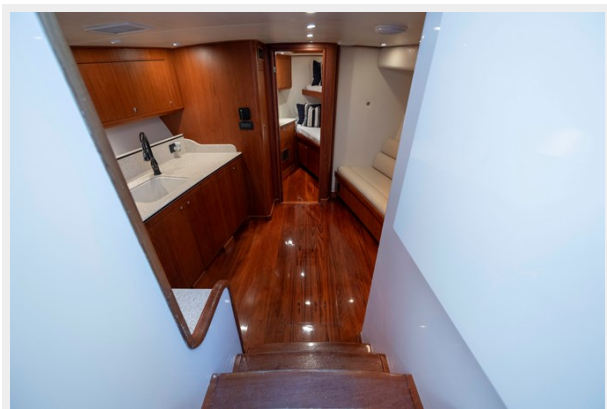
Engines: 2

Manufacturer: Detroit Diesel

Engine Type: Inboard

Fuel Type: Diesel

PHOTOS





CONTACTS

Andrey Shestakov, leading yacht broker of the sales department of Shestakov Yacht Sales Inc. Shestakov Yacht Sales Inc., the official representative of the Miami/Fort Lauderdale FL headquarters.

Contact details

Email: **andrey@shestakovyachtsales.com**

Web: shestakovyachtsales.com/en/

Telephones

USA: **+1(954)274-4435**

Office hours

Monday – Saturday: **9:00 - 21:00 EDT**

Sunday: **closed**

Address



Harbour Towne Marina, 850 NE 3rd St,
STE 213, Dania, FL 33004