

EPSILON — ISLAND PACKET YACHTS



Builder: ISLAND PACKET YACHTS

Year Built: 2008

Model: Cruising Sailboat

Price: \$239,500 USD

Location: United States

LOA: 41' 1" (12.52mm)

Beam: 12.75

Max Draft: 3' 8" (1.12mm)

Our experienced yacht broker, Andrey Shestakov, will help you choose and buy a yacht that best suits your needs **Epsilon — ISLAND PACKET YACHTS** from our catalogue. Presently, at Shestakov Yacht Sales Inc., we have a wide variety of yachts available on our sale's list. We also work in close contact with all the big yacht manufacturers from all over the world.

If you would like to buy a yacht **Epsilon — ISLAND PACKET YACHTS** or would like help answering any questions concerning purchasing, selling or chartering a yacht, please call **+1(954)274-4435**

TABLE OF CONTENTS

TABLE OF CONTENTS	2
SPECIFICATIONS	5
Overview	5
Basic Information	5
Dimensions	5
Accommodations	5
Hull and Deck Information	6
Engine Information	6
PHOTOS	7
2	7
3	7
4	7
5	7
6	8
7	8
8	8
9	8
10	8
11	8
12	9
13	9
14	9
15	9
16	9
17	9
18	10
19	10
20	10

21	10
22	10
23	10
24	11
25	11
26	11
27	11
28	11
29	11
30	12
31	12
32	12
33	12
34	12
35	12
36	13
37	13
38	13
39	13
40	13
41	13
42	14
43	14
44	14
45	14
46	14
47	14
49	15
48	15

50	15
51	15
52	16
CONTACTS	17
Contact details	17
Telephones	17
Office hours	17
Address	17

SPECIFICATIONS

Overview

There is so much to love about the versatile Island Packet SP Cruiser! From its powerful 110 HP engine that pushes the yacht at 8+ knots to its easy-to-manage sail plan with push-button trimming from the comfort of the pilot house. This smartly designed motor cruiser checks many boxes for the aspiring sail or power cruiser. Enjoy spacious and comfortable accommodations above and below the deck. On deck, you will find a covered aft cockpit, a convenient boarding platform, expansive side decks with stainless steel safety rails, an anchor platform, and an inviting forward cockpit with cushions and a table. The yacht's interior features a pilot house/salon/interior helm with wrap-around windows, a functional galley, a dedicated desk/nav, a spacious owner's cabin with a center line bed, a head with a separate shower, and a guest cabin with two beds. There is a lot of storage, and the access to the mechanical equipment is excellent! Epsilon was built in Largo, FL, by Island Packet Yachts and shipped to California when new. Her current owners acquired her in 2020 in Long Beach, CA, and began equipping/upgrading her in preparation for their voyage from California to Florida with the Panama Posse. Epsilon departed Barra De Navidad in Mexico in February, passed through the Panama Canal in March, and arrived in Palm Coast, Florida in April. Along the way she visited several ports in Mexico, Guatemala, El Salvador, Nicaragua, and Costa Rica. May-June 2023 Improvements: New Solar Panels, New Bottom Paint, Re-packed the stuffing box, Exterior Detailed

Basic Information

Category: Cruising Sailboat

Model Year: 2008

Year Built: 2008

Country: United States

Dimensions

LOA: 41' 1" (12.52mm)

LWL: 34' 9" (10.59mm)

Beam: 12.75

Max Draft: 3' 8" (1.12mm)

Accommodations

Total Cabins: 2

Hull and Deck Information

Hull Material: Fiberglass

Engine Information

Engines: 1

Manufacturer: Yanmar

Engine Type: Inboard

Fuel Type: Diesel

PHOTOS

2



3



4



5



6



7



8



9



10



11



12



13



14



15



16



17



18



19



20



21



22



23



24



25



26



27



28



29



30



31



32



33



34



35



36



37



38



39



40



41



42



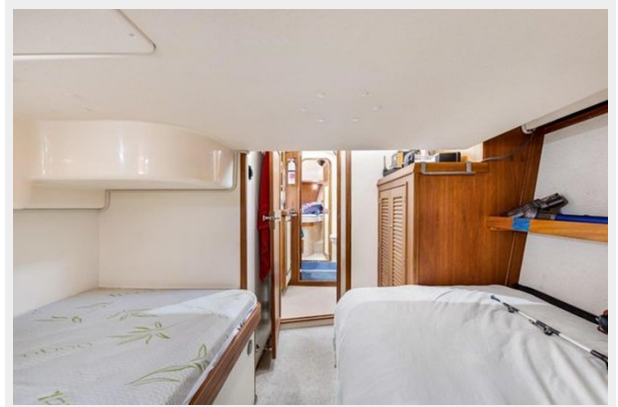
43



44



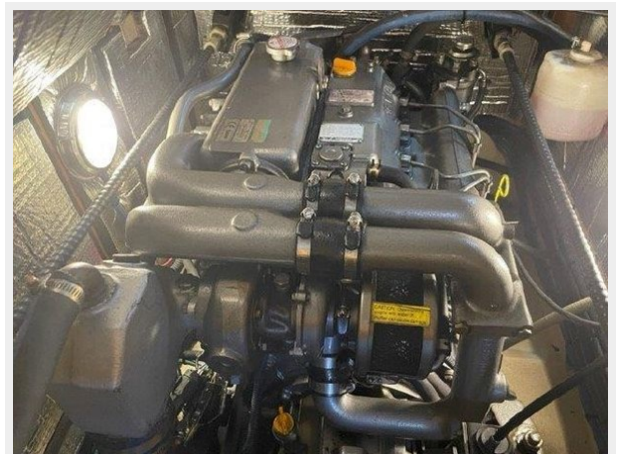
45



46



47



48



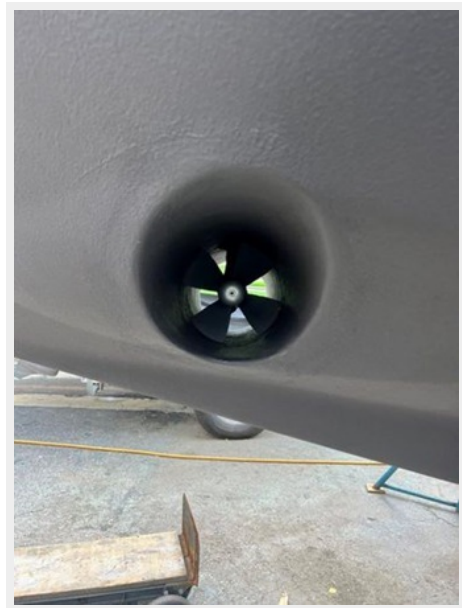
49



50



51



52



CONTACTS

Andrey Shestakov, leading yacht broker of the sales department of Shestakov Yacht Sales Inc. Shestakov Yacht Sales Inc., the official representative of the Miami/Fort Lauderdale FL headquarters.

Contact details

Email: andrey@shestakovyachtsales.com

Web: shestakovyachtsales.com/en/

Telephones

USA: +1(954)274-4435

Office hours

Monday – Saturday: **9:00 - 21:00** EDT

Sunday: **closed**

Address



Harbour Towne Marina, 850 NE 3rd St,
STE 213, Dania, FL 33004