

CELTIC JOY — ISLAND PACKET YACHTS



Builder: ISLAND PACKET YACHTS

Year Built: 1992

Model: Cruising Sailboat

Price: \$60,000 USD

Location: United States

LOA: 32' (9.75m)

Beam: 10.83

Max Draft: 4' 3" (1.3m)

Our experienced yacht broker, Andrey Shestakov, will help you choose and buy a yacht that best suits your needs **Celtic Joy — ISLAND PACKET YACHTS** from our catalogue. Presently, at Shestakov Yacht Sales Inc., we have a wide variety of yachts available on our sale's list. We also work in close contact with all the big yacht manufacturers from all over the world.

If you would like to buy a yacht **Celtic Joy — ISLAND PACKET YACHTS** or would like help answering any questions concerning purchasing, selling or chartering a yacht, please call **+1(954)274-4435**

TABLE OF CONTENTS

TABLE OF CONTENTS	2
SPECIFICATIONS	5
Overview	5
Basic Information	5
Dimensions	5
Speed, Capacities and Weight	5
Accommodations	5
Hull and Deck Information	5
Engine Information	6
PHOTOS	7
2	7
3	7
4	7
5	7
6	7
7	7
8	8
9	8
10	8
11	8
12	8
13	8
14	9
15	9
16	9
17	9
18	9
19	9

20	10
21	10
22	10
23	10
24	10
25	10
26	11
27	11
28	11
29	11
30	11
31	11
32	12
33	12
34	12
35	12
36	12
37	12
38	13
39	13
40	13
41	13
42	13
43	13
44	14
45	14
46	14
47	14
48	14

49	14
50	15
51	15
52	15
53	15
54	15
55	15
56	16
57	16
58	16
59	16
60	16
61	16
62	17
63	17
64	17
65	17
66	17
CONTACTS	18
Contact details	18
Telephones	18
Office hours	18
Address	18

SPECIFICATIONS

Overview

Celtic Joy is a well maintained, nicely outfitted and cared for Island Packet 29. Her current owners have ensured that she is sharp looking, sound and sea worthy. She is in step aboard and go cruising condition.

Basic Information

Category: Cruising Sailboat

Model Year: 1992

Year Built: 1992

Country: United States

Dimensions

LOA: 32' (9.75mm)

Beam: 10.83

Max Draft: 4' 3" (1.3mm)

Speed, Capacities and Weight

Water Capacity: 45 Gallons

Fuel Capacity: 23 Gal Gallons

Accommodations

Total Heads: 1

Hull and Deck Information

Hull Material: Fiberglass

Engine Information

Engines: 1

Manufacturer: Yanmar

Engine Type: Inboard

Fuel Type: Diesel

PHOTOS

2



3



4



5



6



7



8



9



10



11



12



13



14



15



16



17



18



19



20



21



22



23



24



25



26



27



28



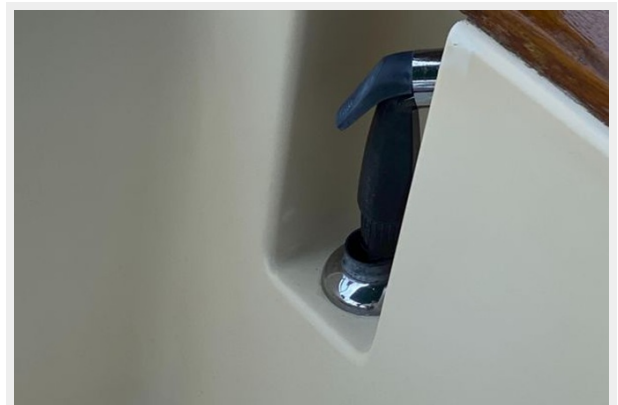
29



30



31



32



33



34



35



36



37



38



39



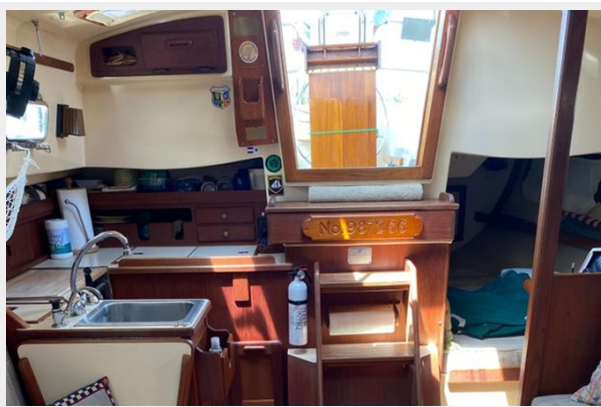
40



41



42



43



44



45



46



47



48



49



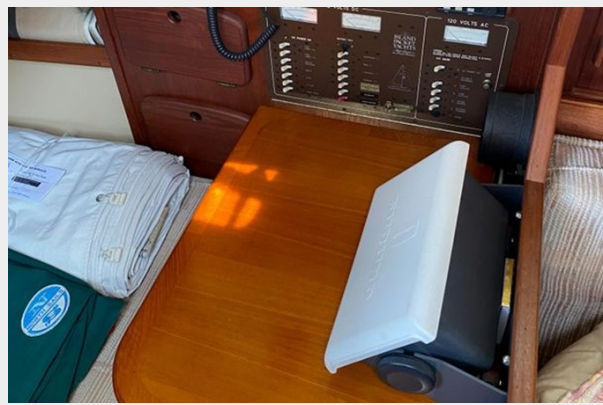
50



51



52



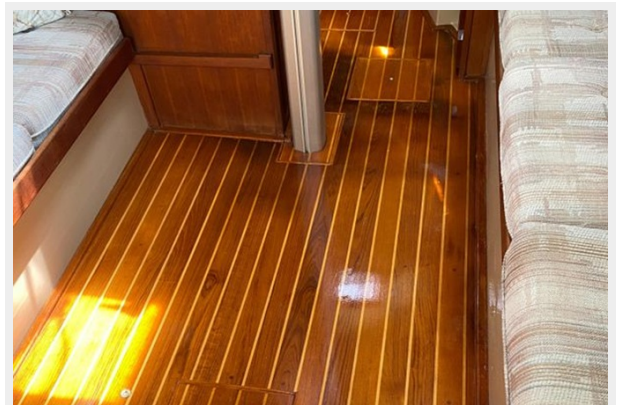
53



54



55



56



57



58



59



60



61



62



63



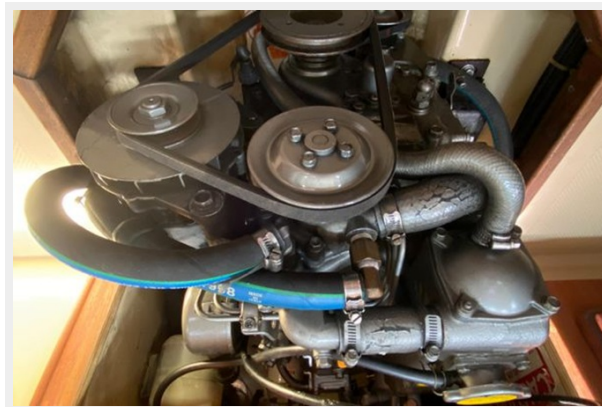
64



65



66



CONTACTS

Andrey Shestakov, leading yacht broker of the sales department of Shestakov Yacht Sales Inc. Shestakov Yacht Sales Inc., the official representative of the Miami/Fort Lauderdale FL headquarters.

Contact details

Email: andrey@shestakovyachtsales.com

Web: shestakovyachtsales.com/en/

Telephones

USA: +1(954)274-4435

Office hours

Monday – Saturday: **9:00 - 21:00** EDT

Sunday: **closed**

Address



Harbour Towne Marina, 850 NE 3rd St,
STE 213, Dania, FL 33004