

SUMMER BREEZE — CRUISERS YACHTS



Builder: CRUISERS YACHTS

Year Built: 1991

Model: Aft Cabin

Price: PRICE ON APPLICATION

Location: United States

LOA: 41' 6" (12.65mm)

Beam: 14

Max Draft: 4' (1.22mm)

Cruise Speed: 15 Knots Kts. (17 MPH)

Max Speed: 25 Knots Kts. (29 MPH)

Our experienced yacht broker, Andrey Shestakov, will help you choose and buy a yacht that best suits your needs **Summer Breeze — CRUISERS YACHTS** from our catalogue. Presently, at Shestakov Yacht Sales Inc., we have a wide variety of yachts available on our sale's list. We also work in close contact with all the big yacht manufacturers from all over the world.

If you would like to buy a yacht **Summer Breeze — CRUISERS YACHTS** or would like help answering any questions concerning purchasing, selling or chartering a yacht, please call **+1(954)274-4435**

TABLE OF CONTENTS

TABLE OF CONTENTS	2
SPECIFICATIONS	4
Overview	4
Basic Information	4
Dimensions	4
Speed, Capacities and Weight	5
Accommodations	5
Hull and Deck Information	5
Engine Information	5
PHOTOS	6
2	6
3	6
4	6
5	6
6	6
7	6
8	7
9	7
10	7
11	7
12	7
13	7
14	8
15	8
16	8
17	8
18	8
19	8

20	9
21	9
22	9
23	9
24	9
CONTACTS	10
Contact details	10
Telephones	10
Office hours	10
Address	10

SPECIFICATIONS

Overview

The Cruisers 3850 was built from 1991 to 94 and is a well proportioned flybridge yacht whose spacious interior and rakish appearance made her a popular boat for Cruisers in the 1990s. She was built on a fully cored modified V hull with prop pockets and a relatively wide beam. Cruiser's engineers packed some big boat accommodations into the 3850 including two comfortable staterooms with double berths, a tub/ shower in the aft head compartment, a big U shaped galley with plenty of counter and storage space, and built in washer and dryer. Tastefully furnished and decorated, this is an impressive interior for a 38 foot boat. Topside, the aft deck is on the small side for a boat this size, however the innovative reverse transom with its molded boarding steps is a practical addition on a boat with this much free board. There's plenty of guest seating on the bridge, and sun pads can be fitted on the foredeck. Additional features include an aft deck wet bar, wide side decks, hardtop, and good cabin storage. with 350 horse power Cat diesels cruise comfortably around 20 knots.

Basic Information

Category: Aft Cabin

Sub Category: Aft Cabin

Model Year: 1991

Year Built: 1991

Country: United States

Dimensions

LOA: 41' 6" (12.65mm)

Beam: 14

Max Draft: 4' (1.22mm)

Speed, Capacities and Weight

Cruise Speed: 15 Knots Kts. (17 MPH)

Max Speed: 25 Knots Kts. (29 MPH)

Water Capacity: 200 Gallons

Holding Tank: 54 Gal Gallons

Fuel Capacity: 400 Gal Gallons

Accommodations

Total Cabins: 2

Total Berths: 2

Total Heads: 2

Hull and Deck Information

Hull Material: Fiberglass

Hull Configuration: Modified V-Hull

Engine Information

Engines: 2

Manufacturer: Caterpillar

Engine Type: Inboard

Fuel Type: Diesel

PHOTOS

2



3



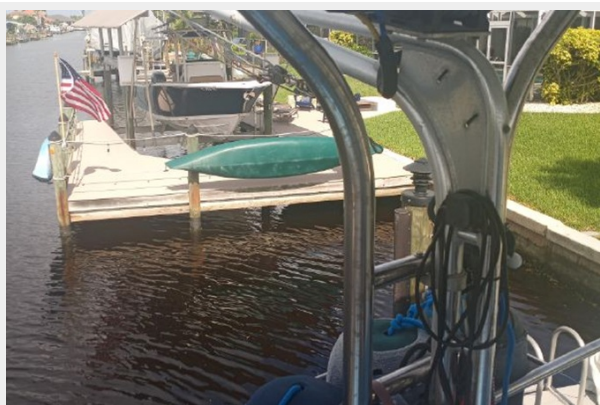
4



5



6



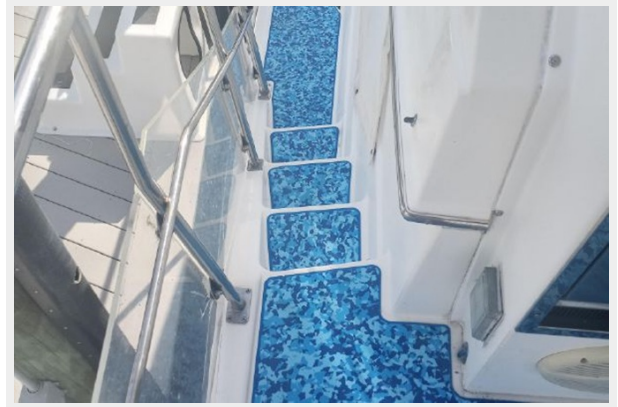
7



8



9



10



11



12



13



14



15



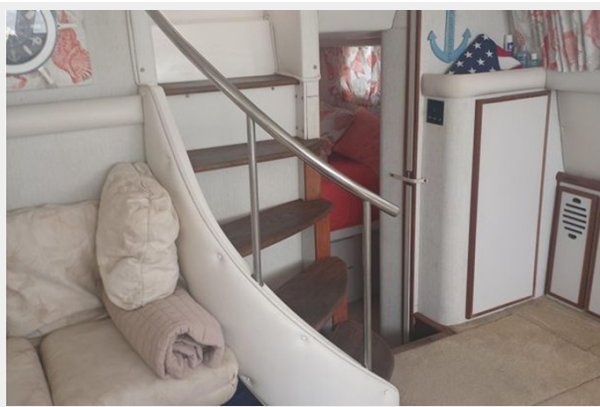
16



17



18



19



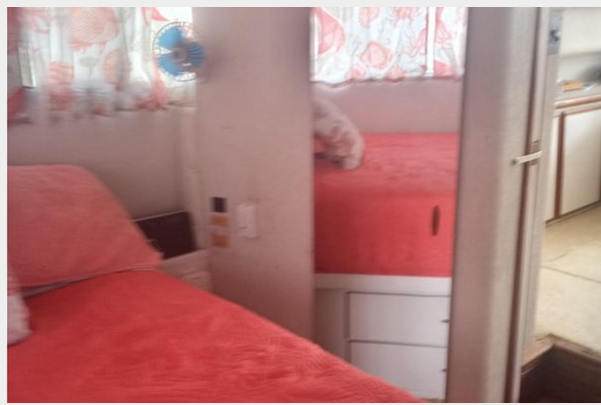
20



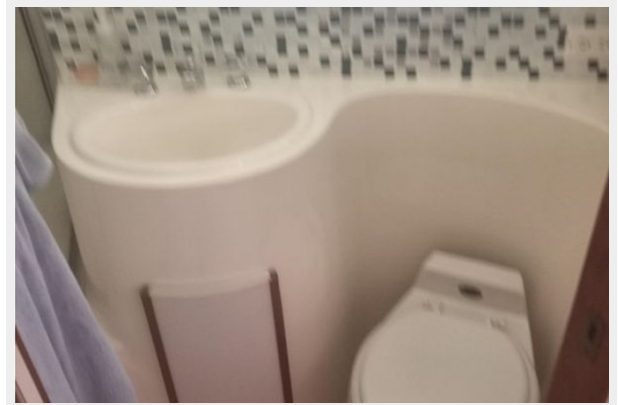
21



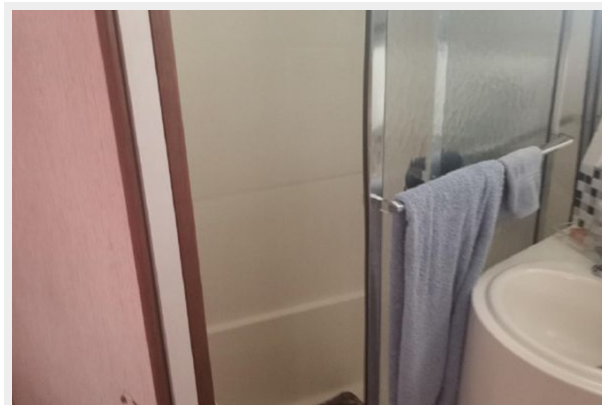
22



23



24



CONTACTS

Andrey Shestakov, leading yacht broker of the sales department of Shestakov Yacht Sales Inc. Shestakov Yacht Sales Inc., the official representative of the Miami/Fort Lauderdale FL headquarters.

Contact details

Email: andrey@shestakovyachtsales.com

Web: shestakovyachtsales.com/en/

Telephones

USA: +1(954)274-4435

Office hours

Monday – Saturday: **9:00 - 21:00** EDT

Sunday: **closed**

Address



Harbour Towne Marina, 850 NE 3rd St,
STE 213, Dania, FL 33004