

TUCK'R INN — CRUISERS YACHTS



Builder: CRUISERS YACHTS

Year Built: 1995

Model: cruiser

Price: PRICE ON APPLICATION

Location: United States

LOA: 37' (11.28mm)

Beam: 13

Max Draft: 3' 5" (1.04mm)

Cruise Speed: 22 Knots Kts. (25 MPH)

Our experienced yacht broker, Andrey Shestakov, will help you choose and buy a yacht that best suits your needs **TUCK'R INN — CRUISERS YACHTS** from our catalogue. Presently, at Shestakov Yacht Sales Inc., we have a wide variety of yachts available on our sale's list. We also work in close contact with all the big yacht manufacturers from all over the world.

If you would like to buy a yacht **TUCK'R INN — CRUISERS YACHTS** or would like help answering any questions concerning purchasing, selling or chartering a yacht, please call **+1(954)274-4435**

TABLE OF CONTENTS

TABLE OF CONTENTS	2
SPECIFICATIONS	4
Overview	4
Basic Information	4
Dimensions	4
Speed, Capacities and Weight	4
Accommodations	4
Hull and Deck Information	5
Engine Information	5
PHOTOS	6
3	6
2	6
5	6
4	6
6	7
7	7
8	7
9	7
11	7
10	7
12	8
13	8
15	8
14	8
17	8
16	8
18	9
19	9

20	9
21	9
23	9
22	9
24	10
25	10
26	10
27	10
28	10
CONTACTS	11
Contact details	11
Telephones	11
Office hours	11
Address	11

SPECIFICATIONS

Overview

This boat has spent all but 30 days of her life in fresh water and looks it. This boat must be seen to be appreciated and should be on your short list. The owners brought her down doing 1/2 of the loop and have decided not to finish. EVERYTHING WORKS This boat was NOT in the hurricane. The canvas is full and in perfect condition. Fresh bottom paint Gas grill New Heat Exchangers New Manifold Blocker Plates This boat has been professionally maintained and it shows

Basic Information

Category: cruiser

Model Year: 1995

Year Built: 1995

Country: United States

Dimensions

LOA: 37' (11.28mm)

LOD: 35' (10.67mm)

Beam: 13

Max Draft: 3' 5" (1.04mm)

Speed, Capacities and Weight

Cruise Speed: 22 Knots Kts. (25 MPH)

Water Capacity: 70 Gallons

Holding Tank: 54 Gal Gallons

Fuel Capacity: 150 Gal Gallons

Accommodations

Total Heads: 1

Hull and Deck Information

Hull Material: Fiberglass Sandwich

Hull Configuration: Modified V-Hull

Engine Information

Engines: 2

Manufacturer: Mercruiser

Engine Type: Inboard

Fuel Type: Gas

PHOTOS

2



3



4



5



6



7



8



9



10



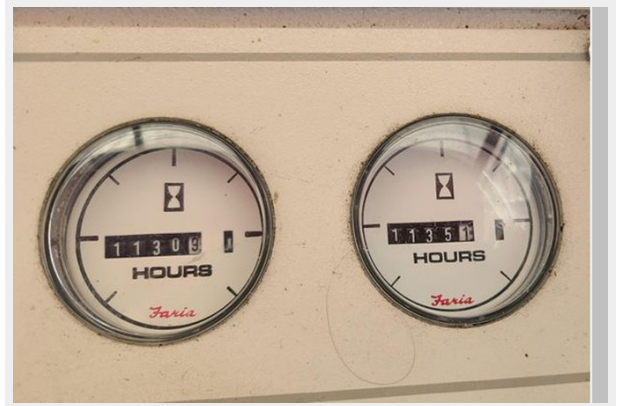
11



12



13



14



15



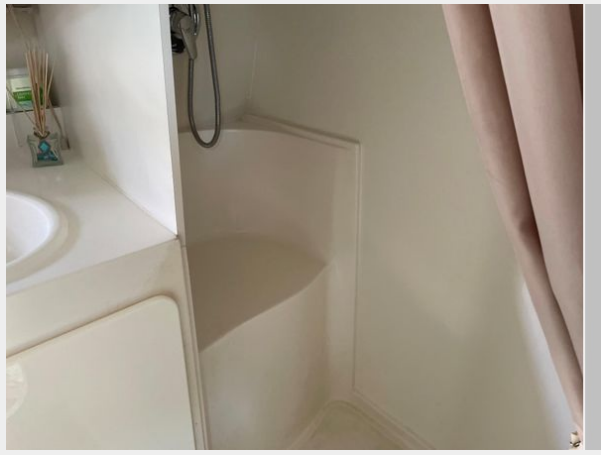
16



17



18



19



20



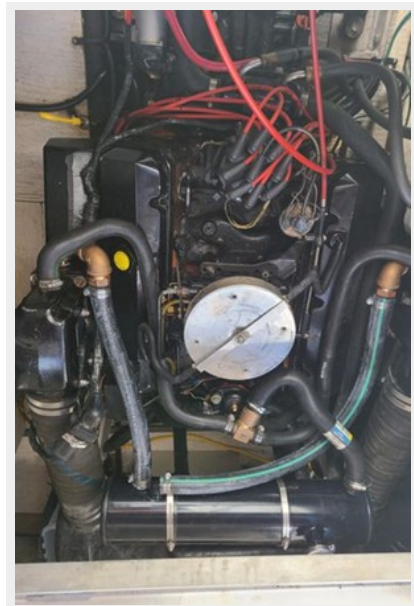
21



22



23



24



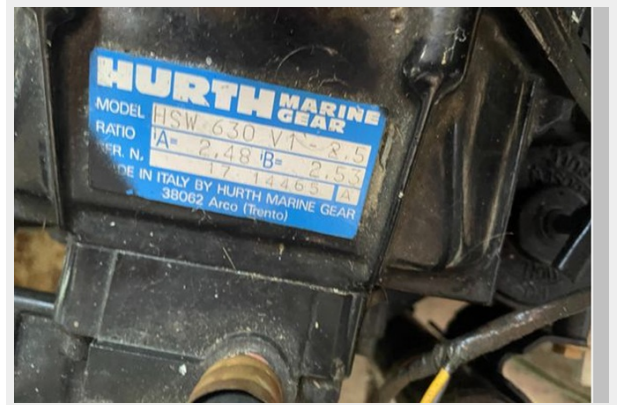
25



26



27



28



CONTACTS

Andrey Shestakov, leading yacht broker of the sales department of Shestakov Yacht Sales Inc. Shestakov Yacht Sales Inc., the official representative of the Miami/Fort Lauderdale FL headquarters.

Contact details

Email: andrey@shestakovyachtsales.com

Web: shestakovyachtsales.com/en/

Telephones

USA: +1(954)274-4435

Office hours

Monday – Saturday: **9:00 - 21:00** EDT

Sunday: **closed**

Address



Harbour Towne Marina, 850 NE 3rd St,
STE 213, Dania, FL 33004