

2018 SCOUT 355 LXF — SCOUT BOATS



Builder: SCOUT BOATS

Year Built: 2018

Model: center_console

Price: PRICE ON APPLICATION

Location: United States

LOA: 35' (10.67mm)

Beam: 10.75

Min Draft: 1' 10" (0.56mm)

Cruise Speed: 27.81 Knots Kts. (32 MPH)

Max Speed: 57.35 Knots Kts. (66 MPH)

Our experienced yacht broker, Andrey Shestakov, will help you choose and buy a yacht that best suits your needs 2018 Scout 355 LXF — SCOUT BOATS from our catalogue. Presently, at Shestakov Yacht Sales Inc., we have a wide variety of yachts available on our sale's list. We also work in close contact with all the big yacht manufacturers from all over the world.

If you would like to buy a yacht 2018 Scout 355 LXF — SCOUT BOATS or would like help answering any questions concerning purchasing, selling or chartering a yacht, please call +1(954)274-4435

TABLE OF CONTENTS

TABLE OF CONTENTS	2
SPECIFICATIONS	4
Overview	4
Basic Information	4
Dimensions	4
Speed, Capacities and Weight	5
Accommodations	5
Hull and Deck Information	5
Engine Information	5
PHOTOS	6
2	6
3	6
4	6
5	6
6	6
7	6
8	7
9	7
10	7
11	7
12	7
13	7
14	8
15	8
CONTACTS	9
Contact details	9
Telephones	9
Office hours	9

Address	9
---------	---

SPECIFICATIONS

Overview

The Scout 355 LXF is known for being one of the most solid boats for fishing out on the market. With the triple Mercury 350's and joystick control maneuverability in tight areas is not a problem, and there is plenty of power to get to where you want to be quickly and safely. The Scouts dual stepped deep V hull is stable and low speeds when trolling, and more than happy to get up to 60 mph in a bit of chop out in the Gulf getting to where the big ones are. While out on your adventure you have protection from the elements with a solid bimini that has a Garmin 4 inch open array radar, flir camera, and solar mounted on it. Not to mention twin outriggers for the really big fish. In the cockpit there is a pair of 16 inch Garmin displays so you know where you are as well as what is around you and under you with the B175H under you to give the detail wanted. As well as a designated Mercury display so you can keep an eye on your motors at all times. Below deck there is a cabin that has a head, enough room for you and the wife to take a nap or spend the night on anchor. A microwave and A/C that has recently been serviced so it blows nice and cold. This is one of the best power boats out there and is priced to sell, where will you take her on your first trip out?

Basic Information

Category: center_console

Sub Category: Center Console

Model Year: 2018

Year Built: 2018

Country: United States

Dimensions

LOA: 35' (10.67mm)

Beam: 10.75

Min Draft: 1' 10" (0.56mm)

Speed, Capacities and Weight

Cruise Speed: 27.81 Knots Kts. (32 MPH) **Max Speed:** 57.35 Knots Kts. (66 MPH)

Water Capacity: 23 Gallons

Holding Tank: 9 Gal Gallons

Fuel Capacity: 310 Gal Gallons

Accommodations

Total Cabins: 1

Hull and Deck Information

Hull Material: Fiberglass

Hull Configuration: Deep Vee

Engine Information

Engines: 3

Manufacturer: Mercury

Engine Type: Outboard

Fuel Type: Gas

PHOTOS

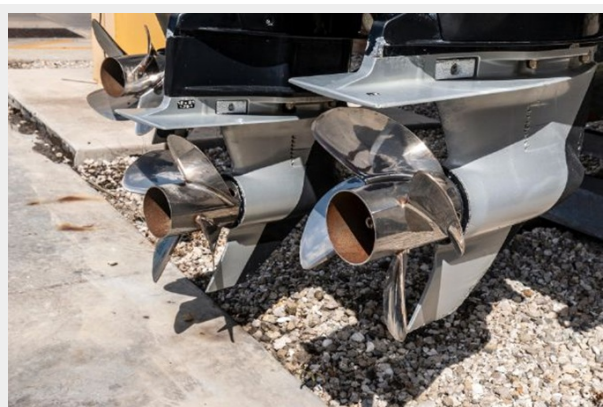
2



3



4



5



6



7



8



9



10



11



12



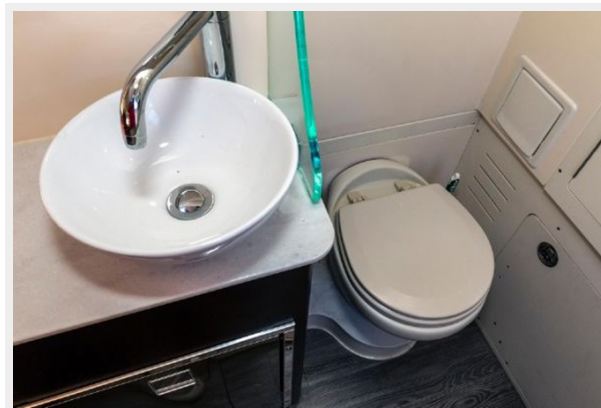
13



14



15



CONTACTS

Andrey Shestakov, leading yacht broker of the sales department of Shestakov Yacht Sales Inc. Shestakov Yacht Sales Inc., the official representative of the Miami/Fort Lauderdale FL headquarters.

Contact details

Email: **andrey@shestakovyachtsales.com**

Web: shestakovyachtsales.com/en/

Telephones

USA: **+1(954)274-4435**

Office hours

Monday – Saturday: **9:00 - 21:00** EDT

Sunday: **closed**

Address



Harbour Towne Marina, 850 NE 3rd St,
STE 213, Dania, FL 33004