

1999 MAINSHIP 30 PILOT — MAINSHIP



Builder: MAINSHIP

LOA: 33' 1" (10.08mm)

Year Built: 1999

Beam: 10.25

Model: cruiser

Price: PRICE ON APPLICATION

Location: United States

Our experienced yacht broker, Andrey Shestakov, will help you choose and buy a yacht that best suits your needs 1999 Mainship 30 Pilot — MAINSHIP from our catalogue. Presently, at Shestakov Yacht Sales Inc., we have a wide variety of yachts available on our sale's list. We also work in close contact with all the big yacht manufacturers from all over the world.

If you would like to buy a yacht 1999 Mainship 30 Pilot — MAINSHIP or would like help answering any questions concerning purchasing, selling or chartering a yacht, please call +1(954)274-4435

TABLE OF CONTENTS

TABLE OF CONTENTS	2
SPECIFICATIONS	3
Overview	3
Basic Information	3
Dimensions	3
Speed, Capacities and Weight	3
Hull and Deck Information	4
Engine Information	4
PHOTOS	5
2	5
3	5
5	5
4	5
6	6
7	6
8	6
9	6
10	7
11	7
12	7
13	7
14	7
CONTACTS	8
Contact details	8
Telephones	8
Office hours	8
Address	8

SPECIFICATIONS

Overview

You are looking at the classic Mainship 30 Pilot, these boats are extremely seaworthy with a deep vee entry and full keel. This particular boat is on it's second owner and has never been anchored overnight. The first owners only used for day trips around Naples, second owner maintained and updated the boat with new upholstery (2 years old) new VHF, engine, generator and transmission oil and filters have just been changed. The generator has 43 (yes 43) hours on it and runs well, engine hours are 1100. Hull is equipped with a bow thruster. Now for the unfortunate part, the boat has sustained some fiberglass damage from hurricane Ian. starboard side shows a crack below the rub rail and the swim platform has small area that need repair. The listing price is well below market and takes into account the cost to repair the storm damage, the owner is open to offers. With some sweat equity you can have beautiful, solid platform to fish, sandbar or overnight.

Basic Information

Category: cruiser

Sub Category: Downeast

Model Year: 1999

Year Built: 1999

Country: United States

Dimensions

LOA: 33' 1" (10.08mm)

Beam: 10.25

Speed, Capacities and Weight

Water Capacity: 40 Gallons

Holding Tank: 13 Gal Gallons

Fuel Capacity: 175 Gal Gallons

Hull and Deck Information

Hull Material: Fiberglass

Engine Information

Engines: 1

Manufacturer: Yanmar

Engine Type: Inboard

Fuel Type: Diesel

PHOTOS

2



3



5



4



6



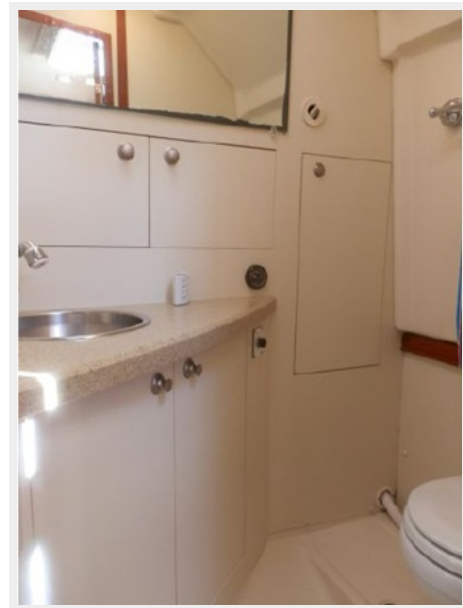
7



8



9



10



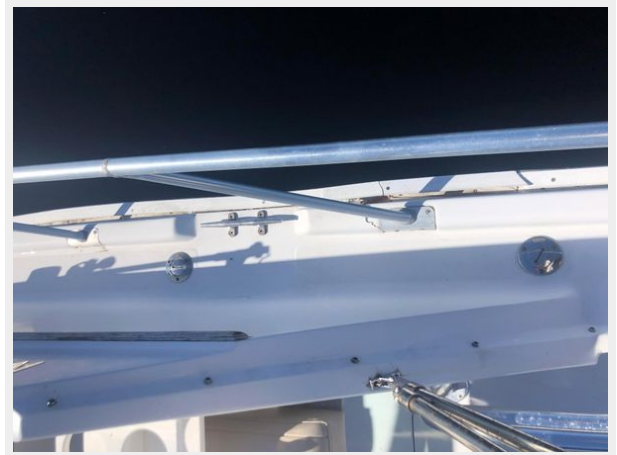
11



12



13



14



CONTACTS

Andrey Shestakov, leading yacht broker of the sales department of Shestakov Yacht Sales Inc. Shestakov Yacht Sales Inc., the official representative of the Miami/Fort Lauderdale FL headquarters.

Contact details

Email: andrey@shestakovyachtsales.com

Web: shestakovyachtsales.com/en/

Telephones

USA: +1(954)274-4435

Office hours

Monday – Saturday: **9:00 - 21:00** EDT

Sunday: **closed**

Address



Harbour Towne Marina, 850 NE 3rd St,
STE 213, Dania, FL 33004