

## PAPA GOLFE — RIOSTAR YACHTS



**Builder:** RIOSTAR YACHTS

**Year Built:** 2008

**Model:** Semi-Displacement

**Price:** \$5,990,000 USD

**Location:** Brazil

**LOA:** 110' 7" (33.7mm)

**Beam:** 25.26

**Max Draft:** 5' 11" (1.8mm)

**Cruise Speed:** 13 Knots Kts. (15 MPH)

**Max Speed:** 17 Knots Kts. (20 MPH)

Our experienced yacht broker, Andrey Shestakov, will help you choose and buy a yacht that best suits your needs **Papa Golfe — RIOSTAR YACHTS** from our catalogue. Presently, at Shestakov Yacht Sales Inc., we have a wide variety of yachts available on our sale's list. We also work in close contact with all the big yacht manufacturers from all over the world.

If you would like to buy a yacht **Papa Golfe — RIOSTAR YACHTS** or would like help answering any questions concerning purchasing, selling or chartering a yacht, please call **+1(954)274-4435**

# TABLE OF CONTENTS

TABLE OF CONTENTS	2
SPECIFICATIONS	5
Overview	5
Basic Information	5
Dimensions	5
Speed, Capacities and Weight	5
Accommodations	6
Hull and Deck Information	6
Engine Information	6
PHOTOS	7
Stbd side view	7
Port side view	7
main salon aft view	7
aft view	7
main salon center view	7
main salon aft view2	7
main salon fish eye	8
main deck lounge	8
main deck dining	8
main deck dining2	8
swim platform	8
upper deck lounge	8
upper deck	9
upper deck lounge	9
accessibility detail	9
main deck	9
main cabin	9
main cabin	9

main cabin	10
owner's study	10
main cabin lounge	10
main cabin entrance	10
main head2	10
main head	10
main head3	11
double cabin	11
double cabin	11
double cabin	11
triple cabin	11
double cabin head	11
double cabin	12
double cabin	12
double cabin head	12
double cabin head	12
twin cabin	13
twin cabin	13
foyer	13
wheelchair rail detail	13
wheelchair rail detail	14
galley	14
galley	14
galley	14
wheelhouse	14
wheelhouse	14
wheelhouse	15
sun deck dining	15
sun deck antenna mount	15

---

sun deck solarium	15
engine room	15
engine room	15
engine room	16
tender garage	16
tender garage	16
<b>CONTACTS</b>	<b>17</b>
Contact details	17
Telephones	17
Office hours	17
Address	17

---

# SPECIFICATIONS

---

## Overview

---

MY Papa Golfe is one of three GRP trawlers manufactured by RIOSTAR Yachts in Brazil.

The yacht has professional management since 2015 and all maintenance history and upgrade tracking will be delivered to the new buyer.

Yacht has been listed for sale after departure of her owner, who was extremely passionate about the yacht and demanded it kept in constant "turn-key" conditions for his use.

Family is keen to sell and will entertain any reasonable offer.

No trade-ins accepted

## Basic Information

---

**Category:** Semi-Displacement

**Sub Category:** Semi-Displacement

**Model Year:** 2008

**Year Built:** 2008

**Country:** Brazil

## Dimensions

---

**LOA:** 110' 7" (33.7mm)

**Beam:** 25.26

**Max Draft:** 5' 11" (1.8mm)

## Speed, Capacities and Weight

---

**Cruise Speed:** 13 Knots Kts. (15 MPH)

**Max Speed:** 17 Knots Kts. (20 MPH)

**Gross Tonnage:** 309 Pounds

**Water Capacity:** 8500 Gallons

**Holding Tank:** 324.93 Gal Gallons

**Fuel Capacity:** 6604.3 Gal Gallons

**Fuel Consumption:** 47.55 Gal Gallons

---

## Accommodations

---

**Total Cabins:** 5

**Total Berths:** 11

**Sleeps:** 11

**Total Heads:** 8

**Crew Cabin:** 6

**Crew Berths:** 6

**Crew Heads:** 3

---

## Hull and Deck Information

---

**Hull Material:** GRP

**Deck Material:** Teak

**Hull Configuration:** Semi-Displacement

**Hull Color:** White

**Hull Designer:** RIOSTAR

**Exterior Designer:** Fernando de Almeida  
Yacht Design

**Interior Designer:** Fernando de Almeida  
Yacht Design

---

## Engine Information

---

**Engines:** 2

**Manufacturer:** Caterpillar

**Engine Type:** Inboard

**Fuel Type:** Diesel

# PHOTOS

**Stbd side view**



**Port side view**



**aft view**



**main salon aft view**



**main salon center view**



**main salon aft view2**





**main salon fish eye**



**main deck lounge**



**main deck dining**



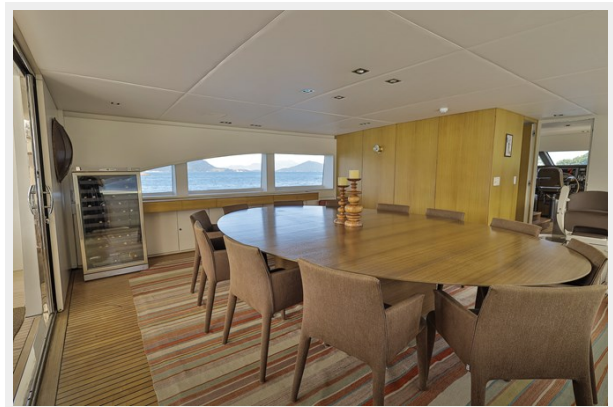
**main deck dining2**



**swim platform**



**upper deck lounge**





**upper deck**



**upper deck lounge**



**accessibility detail**



**main deck**



**main cabin**



**main cabin**



**main cabin**



**owner's study**



**main cabin lounge**



**main cabin entrance**



**main head**



**main head2**





**main head3**



**double cabin**



**double cabin**



**double cabin**



**triple cabin**



**double cabin head**



**double cabin**



**double cabin**



**double cabin head**



**double cabin head**



**twin cabin**



**twin cabin**



**foyer**



**wheelchair rail detail**





**wheelchair rail detail**



**galley**



**galley**



**galley**



**wheelhouse**



**wheelhouse**



**wheelhouse**



**sun deck dining**



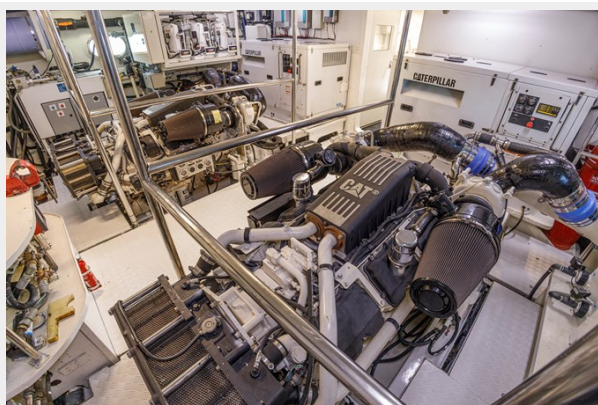
**sun deck antenna mount**



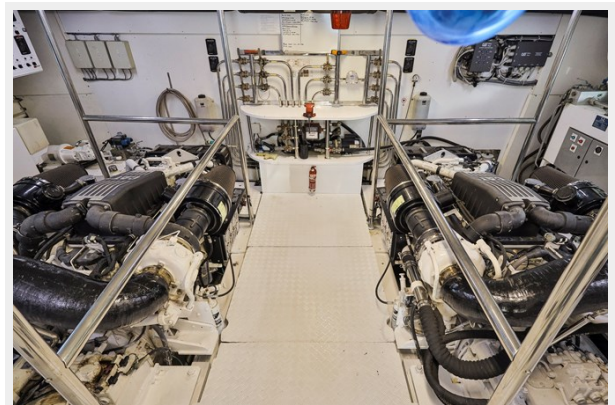
**sun deck solarium**



**engine room**

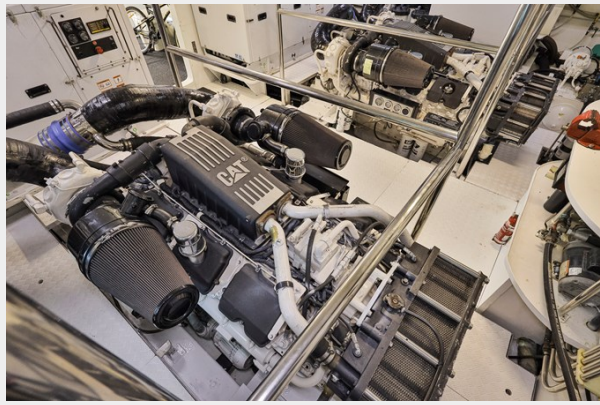


**engine room**





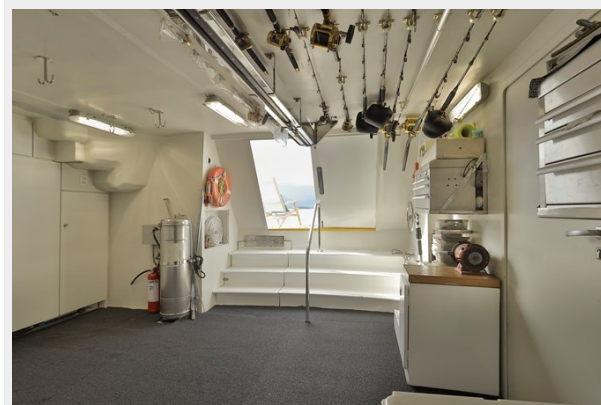
**engine room**



**tender garage**



**tender garage**



# CONTACTS

---

Andrey Shestakov, leading yacht broker of the sales department of Shestakov Yacht Sales Inc. Shestakov Yacht Sales Inc., the official representative of the Miami/Fort Lauderdale FL headquarters.

## Contact details

---

Email: [andrey@shestakovyachtsales.com](mailto:andrey@shestakovyachtsales.com)

Web: [shestakovyachtsales.com/en/](http://shestakovyachtsales.com/en/)

## Telephones

---

USA: +1(954)274-4435

## Office hours

---

Monday – Saturday: **9:00 - 21:00** EDT

Sunday: **closed**

## Address

---



Harbour Towne Marina, 850 NE 3rd St,  
STE 213, Dania, FL 33004