

PERFECT — CRUISERS YACHTS



Builder: CRUISERS YACHTS

Year Built: 1999

Model: Motor Yacht

Price: \$119,900 USD

Location: United States

LOA: 38' (11.58mm)

Beam: 13.66

Max Draft: 3' 2" (0.97mm)

Cruise Speed: 17 Knots Kts. (20 MPH)

Max Speed: 23 Knots Kts. (26 MPH)

Our experienced yacht broker, Andrey Shestakov, will help you choose and buy a yacht that best suits your needs **Perfect — CRUISERS YACHTS** from our catalogue. Presently, at Shestakov Yacht Sales Inc., we have a wide variety of yachts available on our sale's list. We also work in close contact with all the big yacht manufacturers from all over the world.

If you would like to buy a yacht **Perfect — CRUISERS YACHTS** or would like help answering any questions concerning purchasing, selling or chartering a yacht, please call **+1(954)274-4435**

TABLE OF CONTENTS

TABLE OF CONTENTS	2
SPECIFICATIONS	4
Overview	4
Basic Information	4
Dimensions	4
Speed, Capacities and Weight	4
Hull and Deck Information	4
Engine Information	5
PHOTOS	6
3	6
2	6
4	6
5	6
6	7
7	7
8	7
9	7
10	7
11	7
12	8
13	8
14	8
15	8
17	8
16	8
19	9
18	9
20	9

21	9
23	10
22	10
24	10
25	10
26	10
27	10
28	11
29	11
30	11
31	11
32	12
33	12
34	12
35	12
36	12
37	12
38	13
39	13
41	13
40	13
42	13
43	13
CONTACTS	14
Contact details	14
Telephones	14
Office hours	14
Address	14

SPECIFICATIONS

Overview

Owner's Notes:1999 Cruisers Yachts 3750

In the surveys we had performed in May 2020, Perfect is evaluated as "average" condition, with a "fair market value" of \$105k and an "estimated replacement cost" of \$629k. Replacement cost has probably increased somewhat, due to our major electronics upgrades, but our evaluation of her "fair market value" today is at approximately \$150k. To understand our assessment, one must realize the transformation of the vessel from May 2020 until today.

Basic Information

Category: Motor Yacht

Model Year: 1999

Year Built: 1999

Country: United States

Dimensions

LOA: 38' (11.58mm)

Beam: 13.66

Max Draft: 3' 2" (0.97mm)

Speed, Capacities and Weight

Cruise Speed: 17 Knots Kts. (20 MPH)

Max Speed: 23 Knots Kts. (26 MPH)

Water Capacity: 68 Gallons

Holding Tank: 55 Gal Gallons

Fuel Capacity: 300 Gal Gallons

Hull and Deck Information

Hull Material: Fiberglass

Engine Information

Engines: 2

Manufacturer: Volvo Penta

Engine Type: Inboard

Fuel Type: Diesel

PHOTOS

2



3



4



5



6



7



8



9



10



11



12



13



14



15



16



17



18



19



20



21



22



23



24



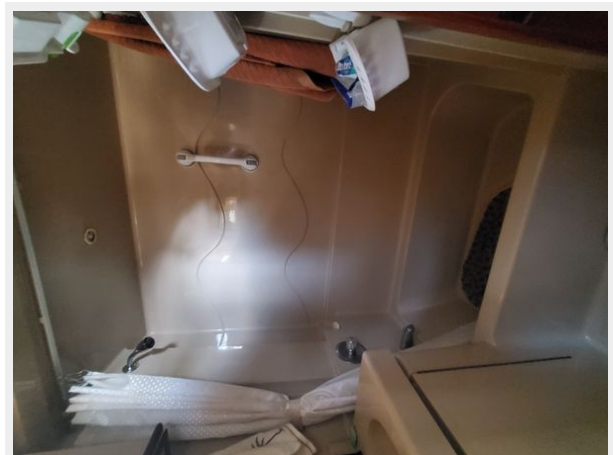
25



26



27



28



29



30



31



32



33



34



35



36



37



38



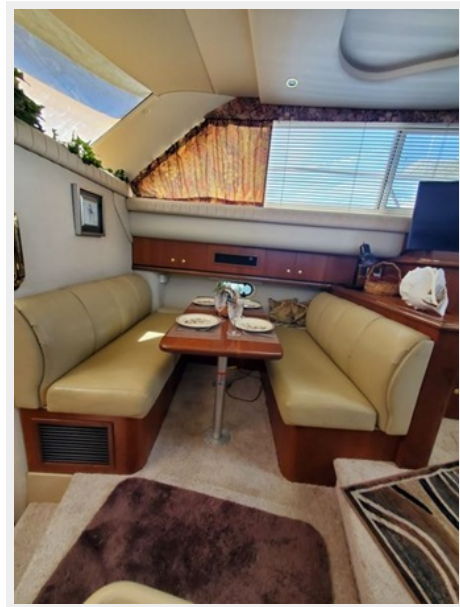
39



40



41



42



43



CONTACTS

Andrey Shestakov, leading yacht broker of the sales department of Shestakov Yacht Sales Inc. Shestakov Yacht Sales Inc., the official representative of the Miami/Fort Lauderdale FL headquarters.

Contact details

Email: andrey@shestakovyachtsales.com

Web: shestakovyachtsales.com/en/

Telephones

USA: +1(954)274-4435

Office hours

Monday – Saturday: **9:00 - 21:00** EDT

Sunday: **closed**

Address



Harbour Towne Marina, 850 NE 3rd St,
STE 213, Dania, FL 33004