

EBBTIDE — CUSTOM BUILT



Builder: CUSTOM BUILT

Year Built: 1999

Model: Pilothouse Cutter

Price: \$680,000 USD

Location: The Bahamas

LOA: 59' (17.98mm)

Beam: 15

Min Draft: 4' (1.22mm)

Max Draft: 9' (2.74mm)

Cruise Speed: 7 Knots Kts. (8 MPH)

Max Speed: 10 Knots Kts. (12 MPH)

Our experienced yacht broker, Andrey Shestakov, will help you choose and buy a yacht that best suits your needs Ebbtide — CUSTOM BUILT from our catalogue. Presently, at Shestakov Yacht Sales Inc., we have a wide variety of yachts available on our sale's list. We also work in close contact with all the big yacht manufacturers from all over the world.

If you would like to buy a yacht Ebbtide — CUSTOM BUILT or would like help answering any questions concerning purchasing, selling or chartering a yacht, please call +1(954)274-4435

TABLE OF CONTENTS

TABLE OF CONTENTS	2
SPECIFICATIONS	5
Overview	5
Basic Information	5
Dimensions	5
Speed, Capacities and Weight	5
Accommodations	6
Hull and Deck Information	6
Engine Information	6
PHOTOS	7
2	7
3	7
4	7
5	7
6	8
7	8
8	8
9	8
10	9
11	9
12	9
13	9
14	10
15	10
16	10
17	10
19	11
18	11

20	11
21	11
22	12
23	12
24	12
25	12
26	13
27	13
28	13
29	13
30	13
31	13
32	14
33	14
34	14
35	14
36	14
37	14
38	15
39	15
40	15
41	15
42	15
43	15
44	16
CONTACTS	17
Contact details	17
Telephones	17
Office hours	17

Address

17

SPECIFICATIONS

Overview

Ebbtide is an Angelina 59 three cabin model version by Gilbert Caroff / Dufлот with welded steel construction of the hull, deck and pilot house. She has a custom pilot house creating a full enclosure for the cockpit. The cockpit area supports two helm stations, two wheels, navigation chart plotter, hydraulic pilot head instruments, engine panels and controls. The cockpit allows a large seating/lounging area. The boat has a three-cabin layout with two heads. She is set up with cutter rig and in mast roller furling with electric power winches. Ebbtide was repowered in 2022 with two new Yanmar 4JH80 80 HP engines and new propulsion system. This boat is in excellent condition, a solid world cruiser, and a must see for the serious sailor/world traveler.

Basic Information

Category: Pilothouse Cutter

Model Year: 1999

Year Built: 1999

Country: The Bahamas

Dimensions

LOA: 59' (17.98mm)

LWL: 54' (16.46mm)

Beam: 15

Min Draft: 4' (1.22mm)

Max Draft: 9' (2.74mm)

Speed, Capacities and Weight

Cruise Speed: 7 Knots Kts. (8 MPH)

Max Speed: 10 Knots Kts. (12 MPH)

Water Capacity: 200 Gallons

Holding Tank: 20 Gal Gallons

Fuel Capacity: 400 Gal Gallons

Accommodations

Total Cabins: 3

Total Berths: 4

Total Heads: 2

Hull and Deck Information

Hull Material: Steel

Engine Information

Engines: 2

Manufacturer: Yanmar

Engine Type: Inboard

Fuel Type: Diesel

PHOTOS

2



3



4



5



6



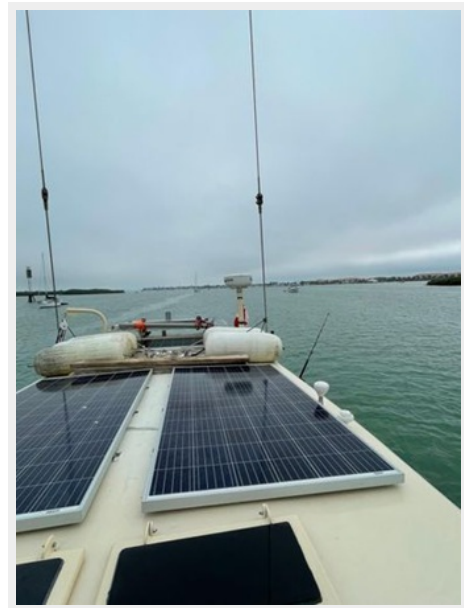
7



8



9



10



11



12



13



14



15



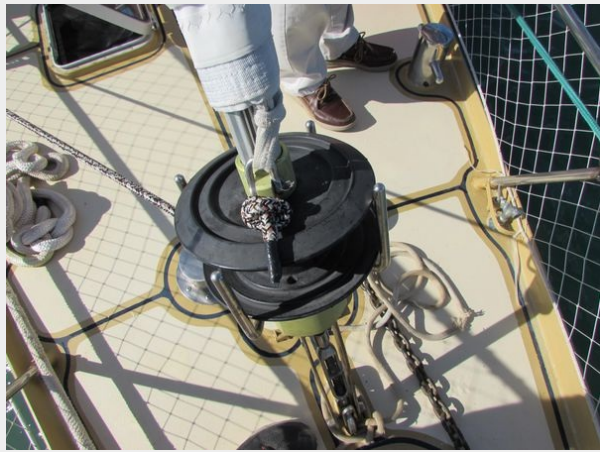
16



17



18



19



20



21



22



23



24



25



26



27



28



29



30



31



32



33



34



35



36



37



38



39



40



41



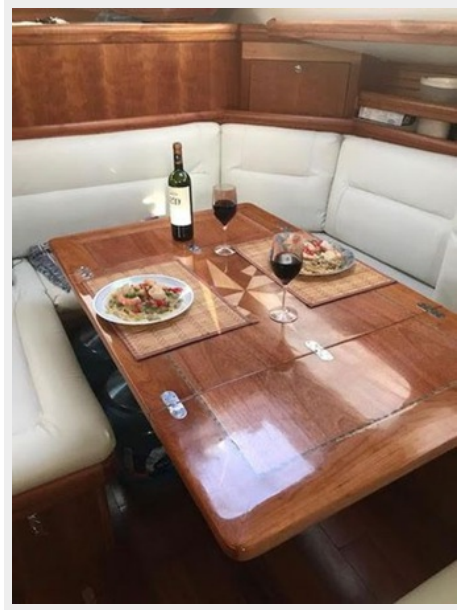
42



43



44



CONTACTS

Andrey Shestakov, leading yacht broker of the sales department of Shestakov Yacht Sales Inc. Shestakov Yacht Sales Inc., the official representative of the Miami/Fort Lauderdale FL headquarters.

Contact details

Email: andrey@shestakovyachtsales.com

Web: shestakovyachtsales.com/en/

Telephones

USA: +1(954)274-4435

Office hours

Monday – Saturday: **9:00 - 21:00** EDT

Sunday: **closed**

Address



Harbour Towne Marina, 850 NE 3rd St,
STE 213, Dania, FL 33004