

## CHAMPAGNE — CATALINA



**Builder:** CATALINA

**Year Built:** 1996

**Model:** Cruising Sailboat

**Price:** PRICE ON APPLICATION

**Location:** United States

**LOA:** 36' 4" (11.07mm)

**Beam:** 11.91

**Min Draft:** 5' 8" (1.73mm)

**Max Draft:** 11' 11" (3.63mm)

**Cruise Speed:** 6 Knots Kts. (7 MPH)

**Max Speed:** 7 Knots Kts. (8 MPH)

Our experienced yacht broker, Andrey Shestakov, will help you choose and buy a yacht that best suits your needs **Champagne — CATALINA** from our catalogue. Presently, at Shestakov Yacht Sales Inc., we have a wide variety of yachts available on our sale's list. We also work in close contact with all the big yacht manufacturers from all over the world.

If you would like to buy a yacht **Champagne — CATALINA** or would like help answering any questions concerning purchasing, selling or chartering a yacht, please call **+1(954)274-4435**

# TABLE OF CONTENTS

TABLE OF CONTENTS	2
SPECIFICATIONS	4
Overview	4
Basic Information	4
Dimensions	4
Speed, Capacities and Weight	4
Accommodations	5
Hull and Deck Information	5
Engine Information	5
PHOTOS	6
2	6
3	6
5	6
4	6
6	7
7	7
8	7
9	7
10	7
11	7
12	8
13	8
14	8
15	8
16	8
17	8
18	9
19	9

20	9
21	9
22	9
23	9
24	10
25	10
26	10
27	10
29	11
28	11
30	11
31	11
32	12
33	12
34	12
35	12
36	13
37	13
39	13
38	13
40	14
<b>CONTACTS</b>	<b>15</b>
Contact details	15
Telephones	15
Office hours	15
Address	15

---

# SPECIFICATIONS

---

## Overview

---

This Catalina 36 MKII is ready to sail and makes a great cruising boat! Refitted with all new electronics and engine recently serviced. Owned by 2nd owner for 21 years and has been professionally maintained with full service records. Too many items to list. This award rated boat design features a large cockpit, full galley, 2 interior cabins (4 berths) and a large seating salon (converts to +3 berths). With all newer running rigging led to cockpit, it is easy to sail. The walk thru transom and built-in swim platform makes for great ease of swimming/diving. Freshly waxed and new bottom painted.

## Basic Information

---

**Category:** Cruising Sailboat

**Model Year:** 1996

**Year Built:** 1996

**Country:** United States

## Dimensions

---

**LOA:** 36' 4" (11.07mm)

**LWL:** 30' 2" (9.19mm)

**Beam:** 11.91

**Min Draft:** 5' 8" (1.73mm)

**Max Draft:** 11' 11" (3.63mm)

## Speed, Capacities and Weight

---

**Cruise Speed:** 6 Knots Kts. (7 MPH)

**Max Speed:** 7 Knots Kts. (8 MPH)

**Water Capacity:** 80 Gallons

**Holding Tank:** 15 Gal Gallons

**Fuel Capacity:** 25 Gal Gallons

---

## Accommodations

---

**Total Cabins:** 2

**Total Berths:** 7

---

## Hull and Deck Information

---

**Hull Material:** Fiberglass

---

## Engine Information

---

**Engines:** 1

**Manufacturer:** Universal

**Engine Type:** Inboard

**Fuel Type:** Diesel

# PHOTOS

2



3



5



4



6



7



8



9



10



11



12



13



14



15



16



17





18



19



20



21



22



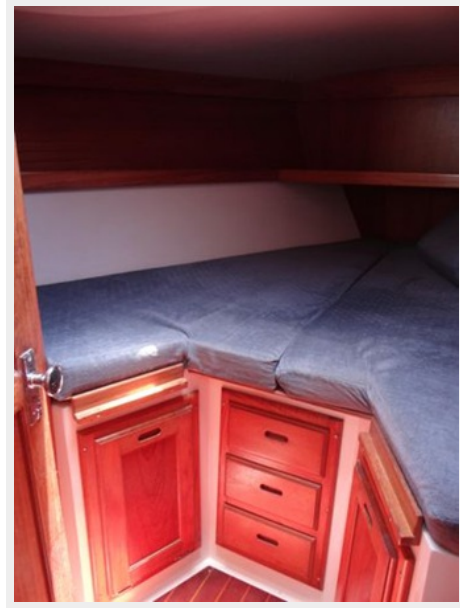
23



24



25



26



27



28



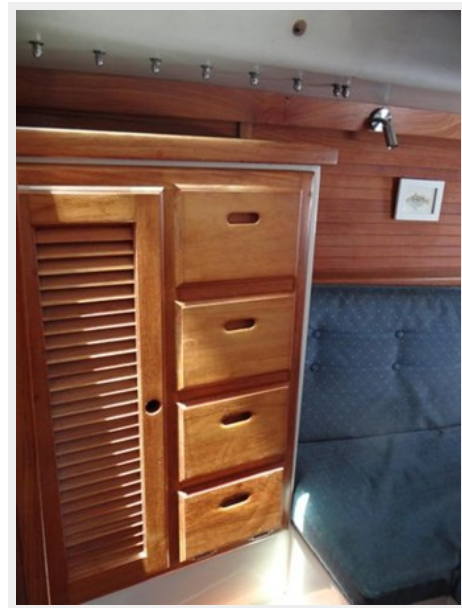
29



30



31



32



33



34



35



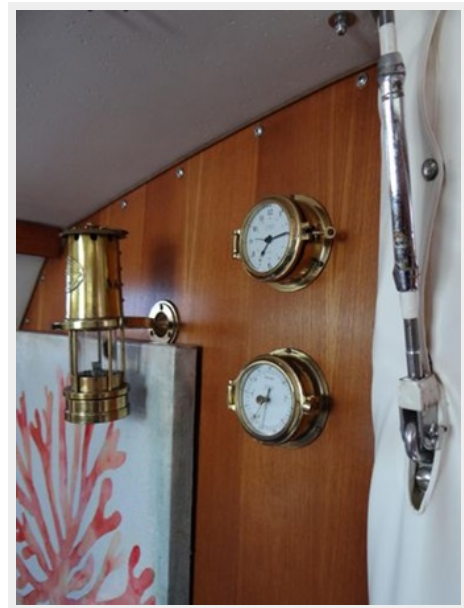
36



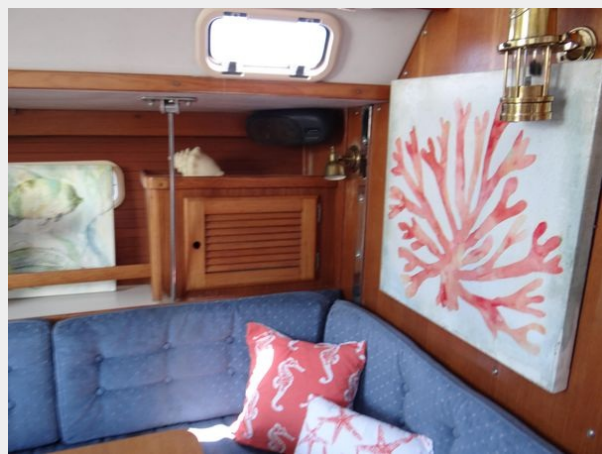
37



39



38



40



# CONTACTS

---

Andrey Shestakov, leading yacht broker of the sales department of Shestakov Yacht Sales Inc. Shestakov Yacht Sales Inc., the official representative of the Miami/Fort Lauderdale FL headquarters.

## Contact details

---

Email: [andrey@shestakovyachtsales.com](mailto:andrey@shestakovyachtsales.com)

Web: [shestakovyachtsales.com/en/](http://shestakovyachtsales.com/en/)

## Telephones

---

USA: +1(954)274-4435

## Office hours

---

Monday – Saturday: **9:00 - 21:00** EDT

Sunday: **closed**

## Address

---



Harbour Towne Marina, 850 NE 3rd St,  
STE 213, Dania, FL 33004