

MY MICHELLE — VIKING



Builder: VIKING

Year Built: 2008

Model: Convertible

Price: \$1,750,000 USD

Location: United States

LOA: 60' (18.29mm)

Beam: 18

Max Draft: 5' (1.52mm)

Our experienced yacht broker, Andrey Shestakov, will help you choose and buy a yacht that best suits your needs **My Michelle — VIKING** from our catalogue. Presently, at Shestakov Yacht Sales Inc., we have a wide variety of yachts available on our sale's list. We also work in close contact with all the big yacht manufacturers from all over the world.

If you would like to buy a yacht **My Michelle — VIKING** or would like help answering any questions concerning purchasing, selling or chartering a yacht, please call **+1(954)274-4435**

TABLE OF CONTENTS

| | |
|------------------------------|---|
| TABLE OF CONTENTS | 2 |
| SPECIFICATIONS | 4 |
| Overview | 4 |
| Basic Information | 4 |
| Dimensions | 4 |
| Speed, Capacities and Weight | 4 |
| Accommodations | 5 |
| Hull and Deck Information | 5 |
| Engine Information | 5 |
| PHOTOS | 6 |
| 2_My Michelle 1 | 6 |
| 3_My Michelle 6 | 6 |
| 4_My Michelle 9 | 6 |
| 5_My Michelle 12 | 6 |
| 7_My Michelle 26 | 6 |
| 6_My Michelle 14 | 6 |
| 8_DJI_20220829_125509_565 | 7 |
| 9_DJI_20220829_125453_558 | 7 |
| 10_DJI_20220829_125108_424 | 7 |
| 11_DJI_20220829_124856_784 | 7 |
| 12_DJI_20220829_125030_293 | 7 |
| 13_DJI_20220829_124929_153 | 7 |
| 14_DJI_20220829_124942_022 | 7 |
| 15_DJI_20220829_125010_912 | 7 |
| 16_DJI_20220829_124914_365 | 8 |
| 17_DJI_20220829_125051_412 | 8 |
| 18_DJI_20220829_121855_437 | 8 |
| 19_DJI_20220829_121913_391 | 8 |

| | |
|----------------------------|-----------|
| 20_DJI_20220829_121932_650 | 8 |
| 21_DJI_20220829_121953_935 | 8 |
| 23_DJI_20220829_122306_187 | 9 |
| 22_DJI_20220829_122745_166 | 9 |
| 24_DJI_20220829_121835_890 | 9 |
| 25_DJI_20220829_122015_581 | 9 |
| 26_DJI_20220829_122256_797 | 10 |
| CONTACTS | 11 |
| Contact details | 11 |
| Telephones | 11 |
| Office hours | 11 |
| Address | 11 |

SPECIFICATIONS

Overview

The 60' Viking is considered to be one of the Vikings top performing Blue Water machines. "My Michelle" is a beautiful example of how a 60' Viking should be maintained. This particular boat comes with a 4 stateroom layout which the majority of 60' convertible buyer is looking for. Also powered with proven marine Diesel 132A (1800 HP) Caterpillar engines. Fuel capacity to 1.920 gallons for sport fishing destinations.

Custom stone galley countertops with high glass teek interior. Another custom feature is the custom Palm Beach Tower, with upgrade Garmin electronics package. Recent hall side paint with a stunning "Haze Grey" color. If you are looking for a 60' Class 4 stateroom convertible that is captain maintained, with many custom upgrades then you should definitely take a look at "My Michelle"

Basic Information

Category: Convertible

Sub Category: Convertible

Model Year: 2008

Year Built: 2008

Country: United States

Dimensions

LOA: 60' (18.29mm)

Beam: 18

Max Draft: 5' (1.52mm)

Speed, Capacities and Weight

Water Capacity: 1630 Gallons

Holding Tank: 135 Gal Gallons

Fuel Capacity: 300 Gal Gallons

Accommodations

Total Cabins: 3

Total Heads: 3

Hull and Deck Information

Hull Material: Fiberglass

Engine Information

Engines: 2

Manufacturer: Caterpillar

Engine Type: Inboard

Fuel Type: Diesel

PHOTOS

2_My Michelle 1



3_My Michelle 6



4_My Michelle 9



5_My Michelle 12



6_My Michelle 14



7_My Michelle 26



8_DJI_20220829_125509_565



9_DJI_20220829_125453_558



10_DJI_20220829_125108_424



11_DJI_20220829_124856_784



12_DJI_20220829_125030_293



13_DJI_20220829_124929_153



14_DJI_20220829_124942_022



15_DJI_20220829_125010_912



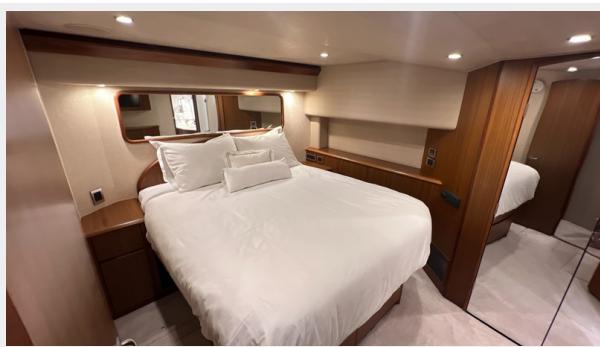
16_DJI_20220829_124914_365



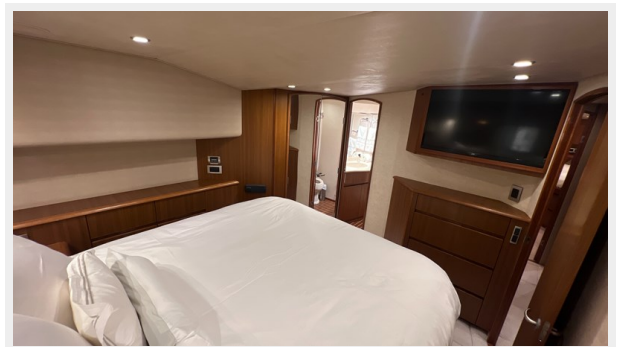
17_DJI_20220829_125051_412



18_DJI_20220829_121855_437



19_DJI_20220829_121913_391



20_DJI_20220829_121932_650



21_DJI_20220829_121953_935



23_DJI_20220829_122306_187



22_DJI_20220829_122745_166



24_DJI_20220829_121835_890



25_DJI_20220829_122015_581



26_DJI_20220829_122256_797



CONTACTS

Andrey Shestakov, leading yacht broker of the sales department of Shestakov Yacht Sales Inc. Shestakov Yacht Sales Inc., the official representative of the Miami/Fort Lauderdale FL headquarters.

Contact details

Email: andrey@shestakovyachtsales.com

Web: shestakovyachtsales.com/en/

Telephones

USA: +1(954)274-4435

Office hours

Monday – Saturday: **9:00 - 21:00** EDT

Sunday: **closed**

Address



Harbour Towne Marina, 850 NE 3rd St,
STE 213, Dania, FL 33004