

DOUBLE CABIN — MAINSHIP



Builder: MAINSHIP

LOA: 40' (12.19m)

Year Built: 1984

Beam: 14

Model: trawler

Price: \$57,000 USD

Location: United States

Our experienced yacht broker, Andrey Shestakov, will help you choose and buy a yacht that best suits your needs **Double Cabin — MAINSHIP** from our catalogue. Presently, at Shestakov Yacht Sales Inc., we have a wide variety of yachts available on our sale's list. We also work in close contact with all the big yacht manufacturers from all over the world.

If you would like to buy a yacht **Double Cabin — MAINSHIP** or would like help answering any questions concerning purchasing, selling or chartering a yacht, please call **+1(954)274-4435**

TABLE OF CONTENTS

TABLE OF CONTENTS	2
SPECIFICATIONS	5
Overview	5
Basic Information	5
Dimensions	5
Speed, Capacities and Weight	5
Accommodations	6
Hull and Deck Information	6
Engine Information	6
PHOTOS	7
2	7
3	7
4	7
5	7
6	7
7	7
8	8
9	8
10	8
11	8
12	8
13	8
14	9
15	9
16	9
17	9
18	9
19	9

20	10
21	10
22	10
23	10
24	10
25	10
26	11
27	11
28	11
29	11
30	11
31	11
32	12
33	12
34	12
35	12
36	12
37	12
38	13
39	13
40	13
41	13
42	13
43	13
44	14
45	14
46	14
47	14
48	14

49	14
50	15
51	15
52	15
53	15
54	15
55	15
CONTACTS	16
Contact details	16
Telephones	16
Office hours	16
Address	16

SPECIFICATIONS

Overview

Sol Mate is a 2 stateroom 2 head layout. The main cabin has tons of living space, and a large galley.

There is a covered flybridge helm with additional seating, as well as a lower helm with a sliding door to the starboard side. The covered aft deck makes a great outdoor space, with seating and outdoor furniture.

This boat could be used as a live aboard or cruiser. This would be a affordable boat for the Great Loop.

She is powered by reliable and very economical Twin Perkins Diesel Engines, and a Generator.

Check out the FULL SPECS for more details and give us a call today to set up a time to come see her!

Basic Information

Category: trawler

Sub Category: Aft Cabin

Model Year: 1984

Year Built: 1984

Country: United States

Dimensions

LOA: 40' (12.19mm)

Beam: 14

Speed, Capacities and Weight

Fuel Capacity: 300 Gal Gallons

Accommodations

Total Cabins: 2

Total Heads: 2

Hull and Deck Information

Hull Material: Fiberglass

Engine Information

Engines: 2

Manufacturer: Perkins

Engine Type: Inboard

Fuel Type: Diesel

PHOTOS

2



3



4



5



6



7



8



9



10



11



12



13



14



15



16



17



18



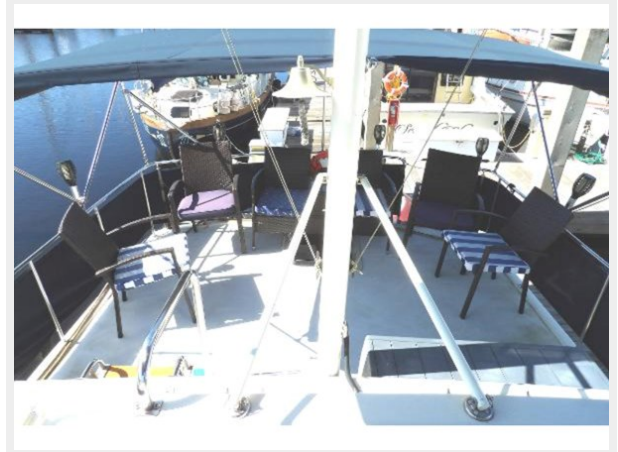
19



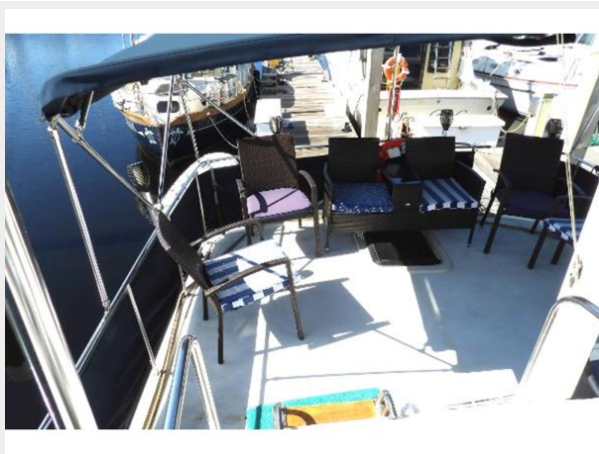
20



21



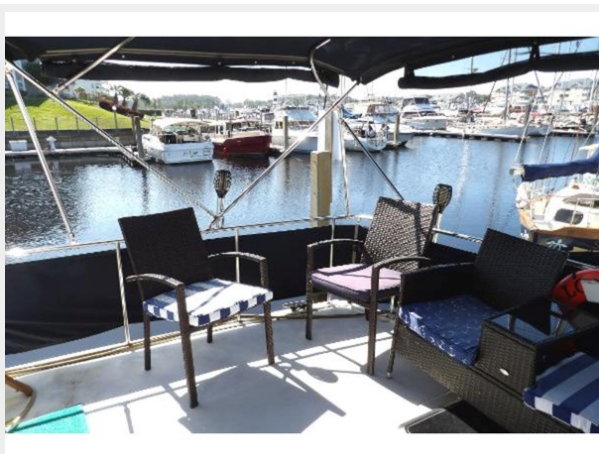
22



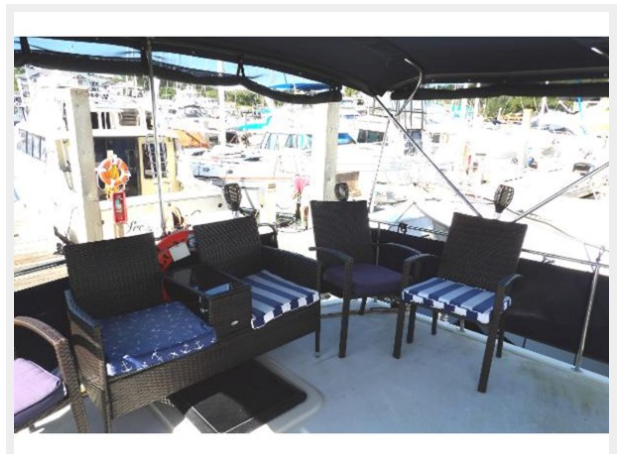
23



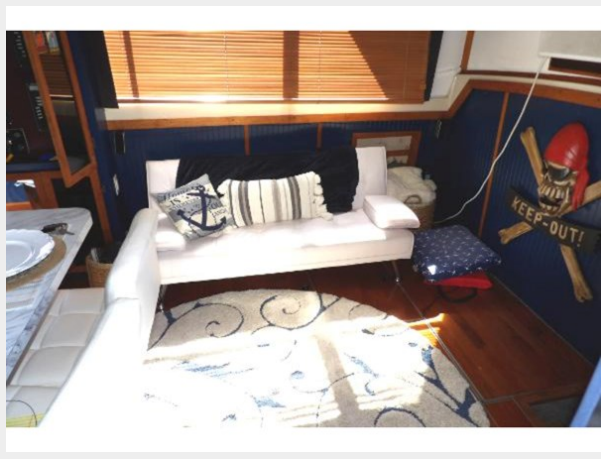
24



25



26



27



28



29



30



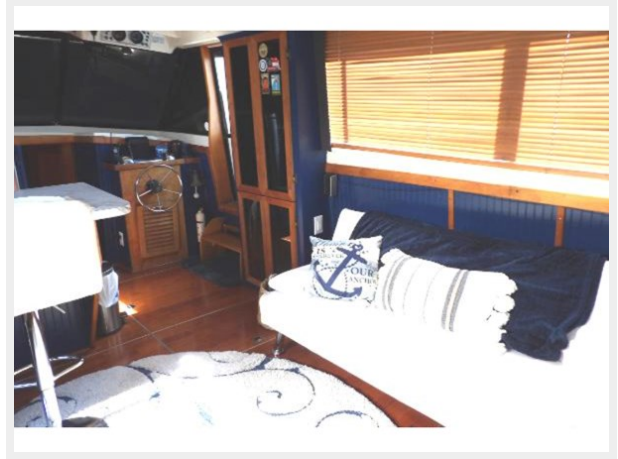
31



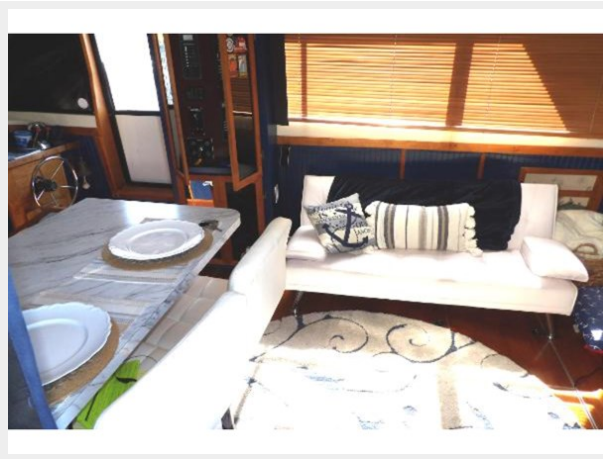
32



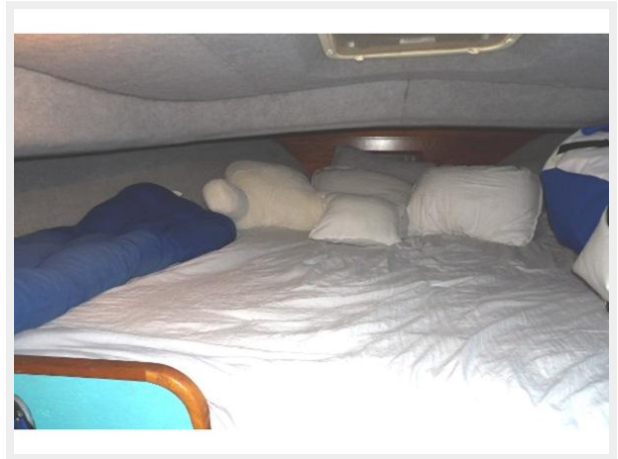
33



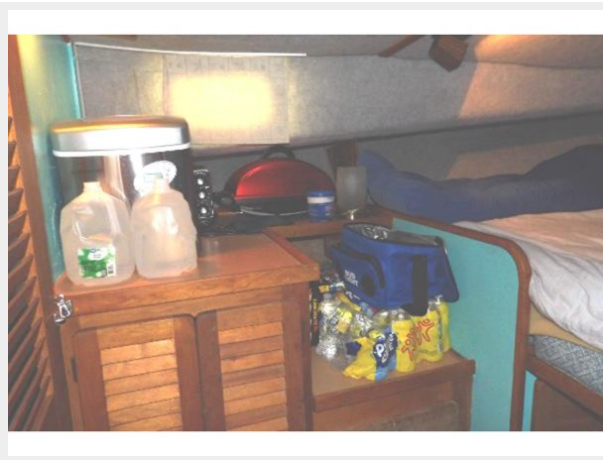
34



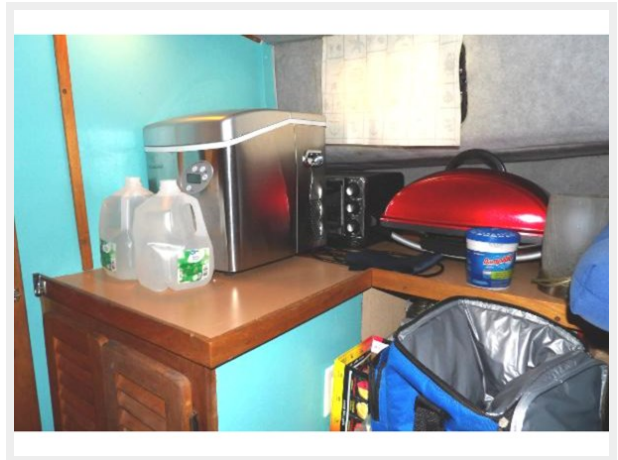
35



36



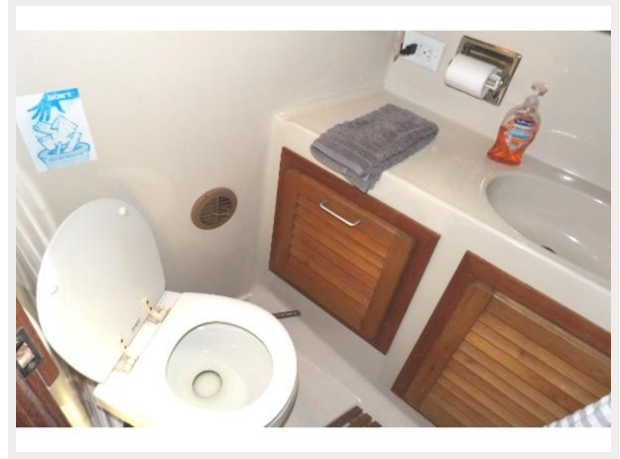
37



38



39



40



41



42



43



44



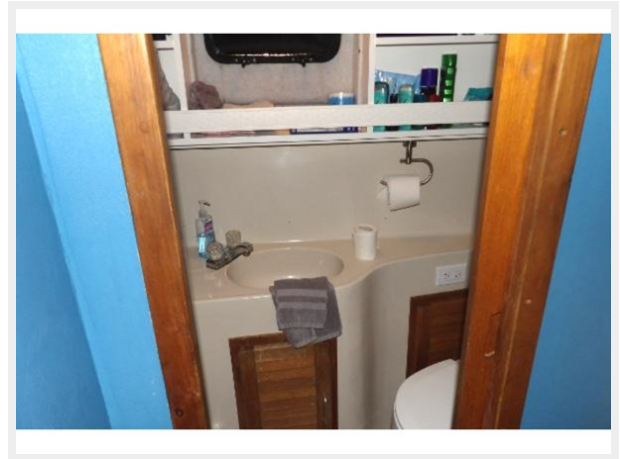
45



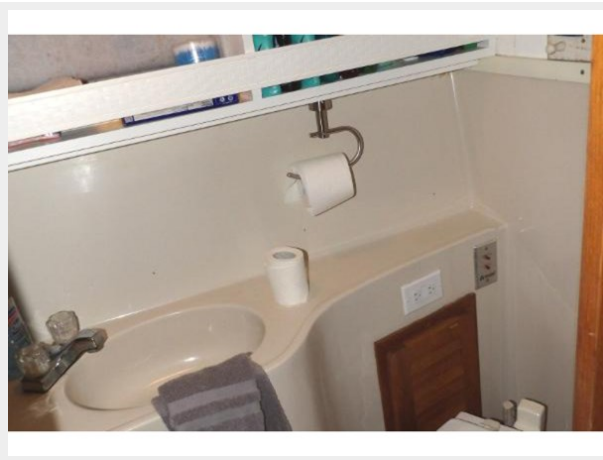
46



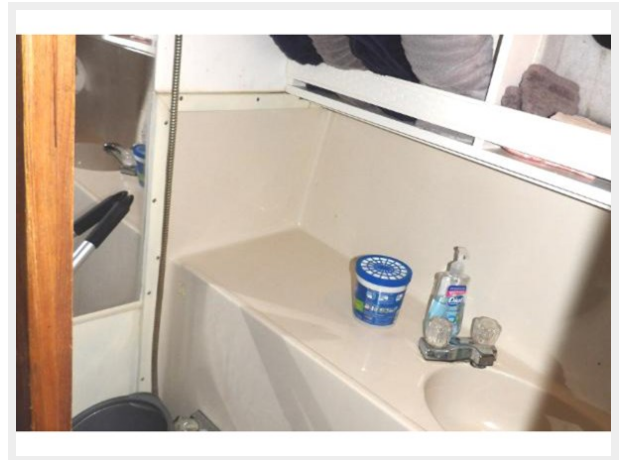
47



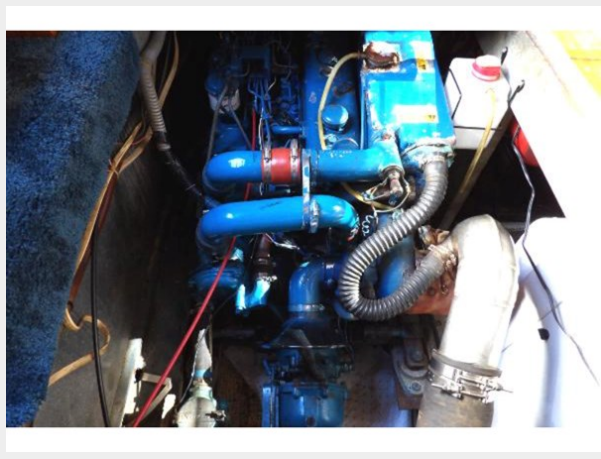
48



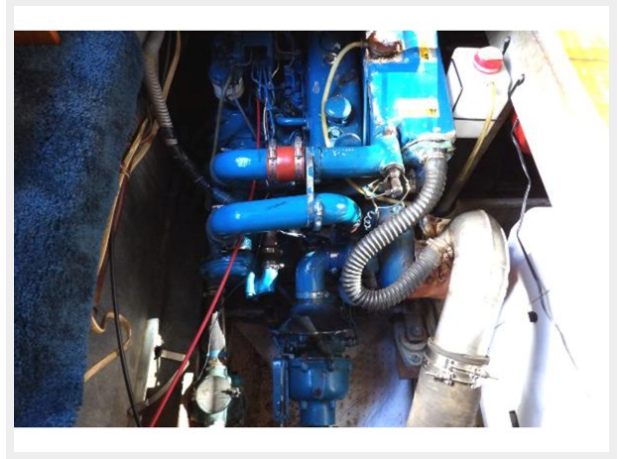
49



50



51



52



53



54



55



CONTACTS

Andrey Shestakov, leading yacht broker of the sales department of Shestakov Yacht Sales Inc. Shestakov Yacht Sales Inc., the official representative of the Miami/Fort Lauderdale FL headquarters.

Contact details

Email: andrey@shestakovyachtsales.com

Web: shestakovyachtsales.com/en/

Telephones

USA: +1(954)274-4435

Office hours

Monday – Saturday: **9:00 - 21:00** EDT

Sunday: **closed**

Address



Harbour Towne Marina, 850 NE 3rd St,
STE 213, Dania, FL 33004