

TYRO II — ALLIED



Builder: ALLIED

Year Built: 1974

Model: Cruising Sailboat

Price: \$45,000 USD

Location: United States

LOA: 36' (10.97mm)

Beam: 11

Max Draft: 4' 6" (1.37mm)

Cruise Speed: 7 Knots Kts. (8 MPH)

Our experienced yacht broker, Andrey Shestakov, will help you choose and buy a yacht that best suits your needs **TYRO II — ALLIED** from our catalogue. Presently, at Shestakov Yacht Sales Inc., we have a wide variety of yachts available on our sale's list. We also work in close contact with all the big yacht manufacturers from all over the world.

If you would like to buy a yacht **TYRO II — ALLIED** or would like help answering any questions concerning purchasing, selling or chartering a yacht, please call **+1(954)274-4435**

TABLE OF CONTENTS

TABLE OF CONTENTS	2
SPECIFICATIONS	4
Overview	4
Basic Information	4
Dimensions	4
Speed, Capacities and Weight	4
Hull and Deck Information	5
Engine Information	5
PHOTOS	6
2	6
3	6
4	6
5	6
6	6
7	6
8	7
9	7
10	7
11	7
12	8
13	8
14	8
15	8
16	9
17	9
19	9
18	9
CONTACTS	10

Contact details	10
Telephones	10
Office hours	10
Address	10

SPECIFICATIONS

Overview

1974 Allied Princess 36 ft Sailboat Steeped in tradition and lovingly maintained, this classic 1974 Allied Princess is more than just a boat – it's a legacy on water. With a length of 36 feet, she's the perfect balance between spaciousness and manageability, making her a dream for both seasoned sailors and newcomers alike. Having received \$60,000 in upgrades and maintenance, this vessel is a testament to the perfect blend of age-old craftsmanship and modern innovation. Chief among the upgrades is a brand-new diesel engine, promising years of reliable cruising ahead. Currently being used as a live-aboard, her interiors showcase a blend of nautical charm and contemporary comforts. Spacious berths, functional galley, and cozy lounging areas make it feel like a floating home rather than just a sailboat. Whether you're dreaming of weekend getaways, extended blue water journeys, or seeking a unique living experience, she's equipped and ready. In every season of her life, from cruising to anchoring as a serene floating residence, this Allied Princess has been a symbol of freedom, adventure, and tranquility. Now, she awaits her next captain and chapter. Inquire today and embark on your next adventure with a boat that's as timeless as the seas she sails

Basic Information

Category: Cruising Sailboat

Model Year: 1974

Year Built: 1974

Country: United States

Dimensions

LOA: 36' (10.97mm)

LWL: 27' 6" (8.38mm)

Beam: 11

Max Draft: 4' 6" (1.37mm)

Speed, Capacities and Weight

Cruise Speed: 7 Knots Kts. (8 MPH)

Water Capacity: 40 Gallons

Fuel Capacity: 40 Gal Gallons

Hull and Deck Information

Hull Material: Fiberglass

Engine Information

Engines: 1

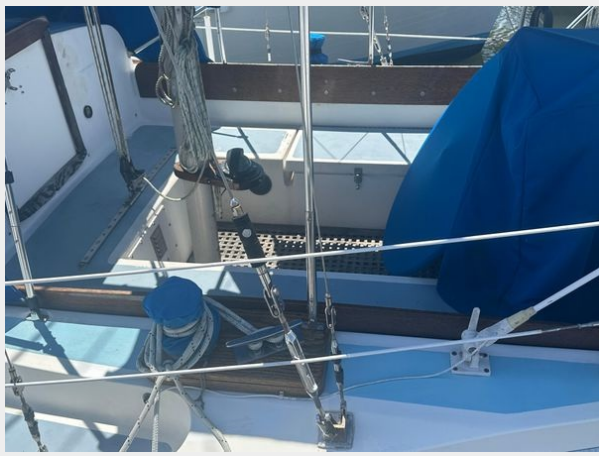
Manufacturer: westerbeke

Engine Type: Inboard

Fuel Type: Diesel

PHOTOS

2



3



4



5



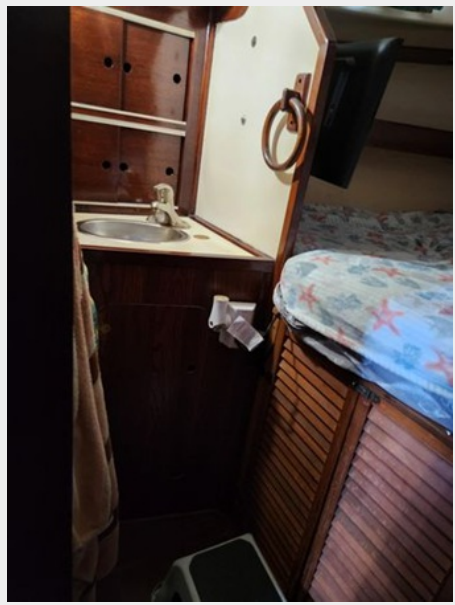
6



7



8



9



10



11



12



13



14



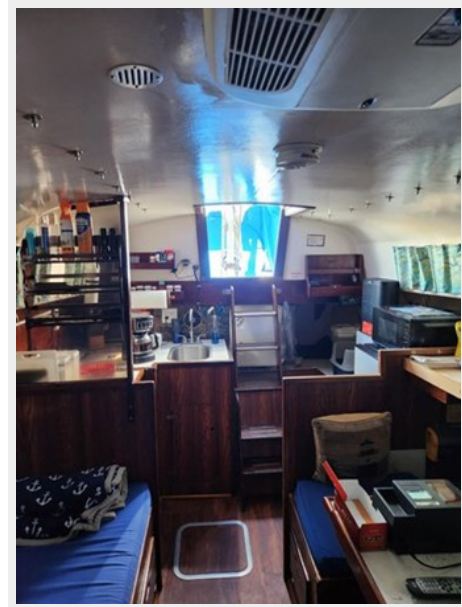
15



16



17



18



19



CONTACTS

Andrey Shestakov, leading yacht broker of the sales department of Shestakov Yacht Sales Inc. Shestakov Yacht Sales Inc., the official representative of the Miami/Fort Lauderdale FL headquarters.

Contact details

Email: andrey@shestakovyachtsales.com

Web: shestakovyachtsales.com/en/

Telephones

USA: +1(954)274-4435

Office hours

Monday – Saturday: **9:00 - 21:00** EDT

Sunday: **closed**

Address



Harbour Towne Marina, 850 NE 3rd St,
STE 213, Dania, FL 33004