

PANACEA — VIKING



Builder: VIKING

Year Built: 2012

Model: Sport Fisherman

Price: \$4,595,000 USD

Location: United States

LOA: 82' (24.99mm)

Beam: 22.33

Min Draft: 5' 6" (1.68mm)

Cruise Speed: 27 Knots Kts. (31 MPH)

Max Speed: 34 Knots Kts. (39 MPH)

Our experienced yacht broker, Andrey Shestakov, will help you choose and buy a yacht that best suits your needs **Panacea — VIKING** from our catalogue. Presently, at Shestakov Yacht Sales Inc., we have a wide variety of yachts available on our sale's list. We also work in close contact with all the big yacht manufacturers from all over the world.

If you would like to buy a yacht **Panacea — VIKING** or would like help answering any questions concerning purchasing, selling or chartering a yacht, please call **+1(954)274-4435**

TABLE OF CONTENTS

TABLE OF CONTENTS	2
SPECIFICATIONS	5
Overview	5
Basic Information	5
Dimensions	5
Speed, Capacities and Weight	5
Accommodations	6
Hull and Deck Information	6
Engine Information	6
PHOTOS	7
3. Ext profile	7
7. Ext Profile	7
15 Cockpit	7
110 Tender	7
14. Cockpit	7
20 Salon	7
22 Salon2	8
24 Salon	8
24 Salon Dayhead	8
23 Salon 3	8
27 Galley 2	8
23 Salon	8
26 Galley	9
27 Galley	9
25 Galley	9
41 EB2	9
41 EB3	9
42 EB3	9

42 EB2	10
43 EB2	10
43 EB	10
43 EB3	10
44 EB	10
42 EB	10
45 Landing	11
45 Master2	11
45 Master	11
45 Master5	11
45 Master3	11
45 Master4	11
86 Crew Head	12
46 Master2	12
57 Port Guest2	12
57 Port Guest	12
82 Captain Head	12
55 Starb Guest	12
55 Starb Guest3	13
55 Starb Guest2	13
46 Master	13
81 Captain	13
82 Captain2	13
58 Port Guest	13
56 Starb Guest3	14
85 Crew	14
85 Crew2	14
110 Tender2	14
111 Aft EB	14

15 Cockpit2	14
19 Mezz	15
18 AFT EB	15
19. Aft EB	15
17 Mezz Table	15
16 Tower	15
13 Cockpit	15
91 Engineroom	16
90 Engine Room	16
92 Engine Room	16
93 Gen	16
4. Ext profile	16
1 Ext Profile 2	16
6. Ext profile Forward	17
1. Ext Profile	17
2. Ext Profile	17
CONTACTS	18
Contact details	18
Telephones	18
Office hours	18
Address	18

SPECIFICATIONS

Overview

400,000. Price Reduction January 18, 2024

"Panacea" is a rare opportunity to purchase a very well maintained Sport Fishing Battlewagon. She has had great ownership through her life with the utmost care and no expense has been spared to maintain her in impeccable condition.

She was custom built by a very knowledgeable multiple large yacht owner to offer the luxuries and feel of a yacht but can fish like a sport fishing battlewagon. The space management in design and the build process is evident in the layout offering some finer features for the owners and guest as well as having great crew quarters for the captain and crew.

She comes fully equipped with Seakeeper 29 Gyro Stabilizer, 2600 hp reliable MTU's for excellent speed and fuel efficiencies and a 17' Dragonfly flats boat 2021.

Basic Information

Category: Sport Fisherman

Model Year: 2013

Year Built: 2012

Country: United States

Dimensions

LOA: 82' (24.99mm)

Beam: 22.33

Min Draft: 5' 6" (1.68mm)

Speed, Capacities and Weight

Cruise Speed: 27 Knots Kts. (31 MPH)

Max Speed: 34 Knots Kts. (39 MPH)

Water Capacity: 450 Gallons

Holding Tank: 280 Gal Gallons

Fuel Capacity: 3300 Gal Gallons

Accommodations

Total Cabins: 3

Hull and Deck Information

Hull Material: Fiberglass

Engine Information

Engines: 2

Manufacturer: MTU

Engine Type: Inboard

Fuel Type: Diesel

PHOTOS

3. Ext profile



7. Ext Profile



110 Tender



15 Cockpit



14. Cockpit



20 Salon



22 Salon2



24 Salon



24 Salon Dayhead



23 Salon 3



27 Galley 2



23 Salon



26 Galley



27 Galley



25 Galley



41 EB2



41 EB3



42 EB3



42 EB2



43 EB2



43 EB



43 EB3



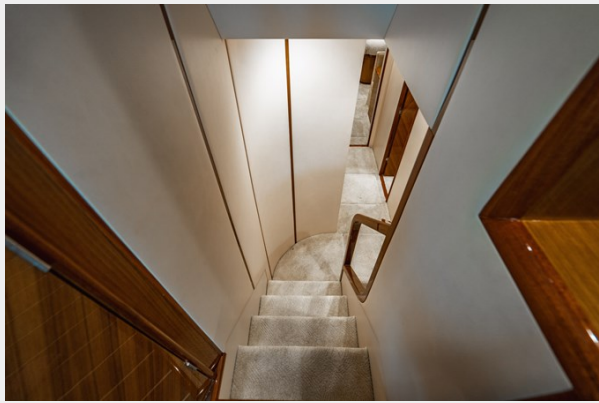
44 EB



42 EB



45 Landing



45 Master2



45 Master



45 Master5



45 Master3



45 Master4



86 Crew Head



46 Master2



57 Port Guest2



57 Port Guest



82 Captain Head



55 Starb Guest



55 Starb Guest3



55 Starb Guest2



46 Master



81 Captain



82 Captain2



58 Port Guest



56 Starb Guest3



85 Crew



85 Crew2



110 Tender2



111 Aft EB



15 Cockpit2



19 Mezz



18 AFT EB



19. Aft EB



17 Mezz Table



16 Tower



13 Cockpit



91 Engine room



90 Engine Room



92 Engine Room



93 Gen



4. Ext profile



1 Ext Profile 2



6. Ext profile Forward



1. Ext Profile



2. Ext Profile



CONTACTS

Andrey Shestakov, leading yacht broker of the sales department of Shestakov Yacht Sales Inc. Shestakov Yacht Sales Inc., the official representative of the Miami/Fort Lauderdale FL headquarters.

Contact details

Email: andrey@shestakovyachtsales.com

Web: shestakovyachtsales.com/en/

Telephones

USA: +1(954)274-4435

Office hours

Monday – Saturday: **9:00 - 21:00** EDT

Sunday: **closed**

Address



Harbour Towne Marina, 850 NE 3rd St,
STE 213, Dania, FL 33004