

MS. KAREN — MONTICELLO RIVER YACHT



Builder: MONTICELLO RIVER YACHT

Year Built: 1998

Model: houseboat

Price: \$190,000 USD

Location: United States

LOA: 70' (21.34mm)

Beam: 16

Min Draft: 3' (0.91mm)

Max Draft: 4' (1.22mm)

Cruise Speed: 8 Knots Kts. (9 MPH)

Max Speed: 12 Knots Kts. (14 MPH)

Our experienced yacht broker, Andrey Shestakov, will help you choose and buy a yacht that best suits your needs **Ms. Karen — MONTICELLO RIVER YACHT** from our catalogue. Presently, at Shestakov Yacht Sales Inc., we have a wide variety of yachts available on our sale's list. We also work in close contact with all the big yacht manufacturers from all over the world.

If you would like to buy a yacht **Ms. Karen — MONTICELLO RIVER YACHT** or would like help answering any questions concerning purchasing, selling or chartering a yacht, please call **+1(954)274-4435**

TABLE OF CONTENTS

TABLE OF CONTENTS	2
SPECIFICATIONS	4
Overview	4
Basic Information	4
Dimensions	4
Speed, Capacities and Weight	4
Accommodations	5
Hull and Deck Information	5
Engine Information	5
PHOTOS	6
1	6
2	6
3	6
4	6
5	6
6	6
7	7
8	7
9	7
10	7
11	7
12	7
13	8
14	8
15	8
16	8
17	8
18	8

19	9
20	9
21	9
22	9
23	9
24	9
25	10
26	10
28	10
27	10
29	10
30	10
31	11
32	11
CONTACTS	12
Contact details	12
Telephones	12
Office hours	12
Address	12

SPECIFICATIONS

Overview

70' Monticello River Yacht Houseboat 1998Ms. Karen is a must see, large houseboat with a lifetime fresh water history.Spring 2020 bottom job and prop reconditioning.

Basic Information

Category: houseboat

Sub Category: Houseboat

Model Year: 1998

Year Built: 1998

Country: United States

Dimensions

LOA: 70' (21.34mm)

Beam: 16

Min Draft: 3' (0.91mm)

Max Draft: 4' (1.22mm)

Speed, Capacities and Weight

Cruise Speed: 8 Knots Kts. (9 MPH)

Cruise Speed Range: 100

Max Speed: 12 Knots Kts. (14 MPH)

Max Speed Range: 80 Kts.

Gross Tonnage: 30 Pounds

Water Capacity: 60 Gallons

Holding Tank: 40 Gal Gallons

Fuel Capacity: 120 Gal Gallons

Accommodations

Total Cabins: 2

Total Berths: 4

Sleeps: 6

Total Heads: 2

Crew Cabin: 2

Crew Berths: 2

Crew Heads: 1

Hull and Deck Information

Hull Material: Fiberglass

Deck Material: Fiberglass

Hull Configuration: Monohull

Hull Designer: Monticello

Interior Designer: Monticello

Engine Information

Engines: 2

Manufacturer: Crusader

Engine Type: Inboard

Fuel Type: Diesel

PHOTOS

1



2



3



4



5



6



7



8



9



10



11



12



13



14



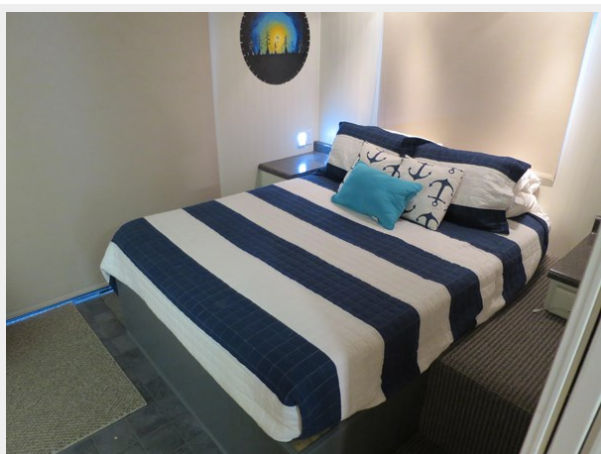
15



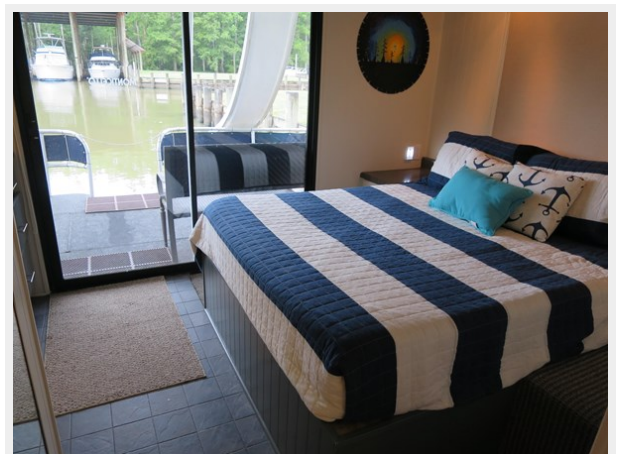
16



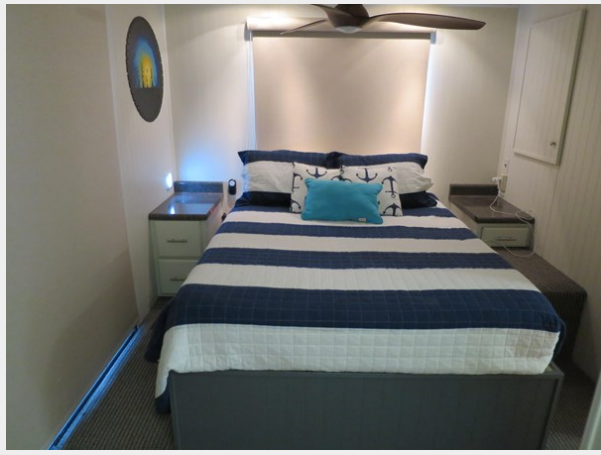
17



18



19



20



21



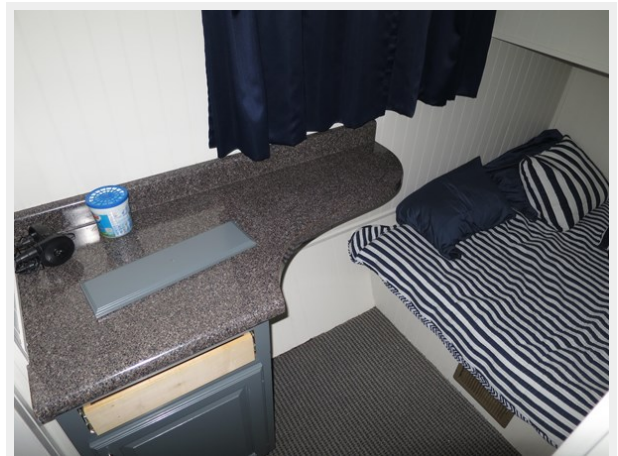
22



23



24



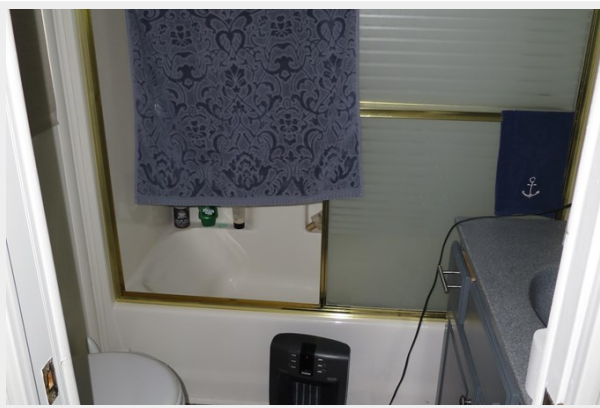
25



26



27



28



29



30



31



32



CONTACTS

Andrey Shestakov, leading yacht broker of the sales department of Shestakov Yacht Sales Inc. Shestakov Yacht Sales Inc., the official representative of the Miami/Fort Lauderdale FL headquarters.

Contact details

Email: andrey@shestakovyachtsales.com

Web: shestakovyachtsales.com/en/

Telephones

USA: +1(954)274-4435

Office hours

Monday – Saturday: **9:00 - 21:00** EDT

Sunday: **closed**

Address



Harbour Towne Marina, 850 NE 3rd St,
STE 213, Dania, FL 33004