

PATRICIA D — REAL SHIPS



Builder: REAL SHIPS

Year Built: 2004

Model: Ocean Going

Price: \$647,500 USD

Location: United States

LOA: 69' (21.03mm)

Beam: 20

Min Draft: 6' (1.83mm)

Max Draft: 6' 6" (1.98mm)

Cruise Speed: 10 Knots Kts. (12 MPH)

Max Speed: 12 Knots Kts. (14 MPH)

Our experienced yacht broker, Andrey Shestakov, will help you choose and buy a yacht that best suits your needs **Patricia D — REAL SHIPS** from our catalogue. Presently, at Shestakov Yacht Sales Inc., we have a wide variety of yachts available on our sale's list. We also work in close contact with all the big yacht manufacturers from all over the world.

If you would like to buy a yacht **Patricia D — REAL SHIPS** or would like help answering any questions concerning purchasing, selling or chartering a yacht, please call **+1(954)274-4435**

TABLE OF CONTENTS

| | |
|------------------------------|---|
| TABLE OF CONTENTS | 2 |
| SPECIFICATIONS | 5 |
| Overview | 5 |
| Basic Information | 5 |
| Dimensions | 5 |
| Speed, Capacities and Weight | 5 |
| Accommodations | 6 |
| Hull and Deck Information | 6 |
| Engine Information | 6 |
| PHOTOS | 7 |
| 1 | 7 |
| 2 | 7 |
| 3 | 7 |
| 4 | 7 |
| 5 | 7 |
| 6 | 7 |
| 7 | 8 |
| 8 | 8 |
| 10 | 8 |
| 9 | 8 |
| 11 | 8 |
| 12 | 8 |
| 13 | 9 |
| 14 | 9 |
| 15 | 9 |
| 16 | 9 |
| 17 | 9 |
| 18 | 9 |

| | |
|-----------------|-----------|
| 19 | 10 |
| 20 | 10 |
| 21 | 10 |
| 22 | 10 |
| 23 | 10 |
| 24 | 10 |
| 25 | 11 |
| 26 | 11 |
| 27 | 11 |
| 28 | 11 |
| 30 | 11 |
| 29 | 11 |
| 31 | 12 |
| 32 | 12 |
| 33 | 12 |
| 34 | 12 |
| 36 | 12 |
| 35 | 12 |
| 37 | 13 |
| 38 | 13 |
| 40 | 13 |
| 39 | 13 |
| 41 | 14 |
| 42 | 14 |
| 43 | 14 |
| 44 | 14 |
| CONTACTS | 15 |
| Contact details | 15 |
| Telephones | 15 |

Office hours 15

Address 15

SPECIFICATIONS

Overview

This Real Ships is appropriately named, as Patricia D is everything a small ship would need to facilitate her intended purpose as a serious long range world cruising yacht. Her sturdy steel hull construction with aluminum super structure, bulbous bow, large rudders, twin diesel engines, hydraulic stabilizers and 4700 gallons of fuel can make any destination reachable. The sellers change in plans places her on the market at a fraction of her replacement cost. Just completed a yard period, getting a fresh bottom job, hull paint job, new engine batteries, new washer and dryer, freezer, new Plasteak on main deck and a few other cosmetic upgrades.

Basic Information

Category: Ocean Going

Sub Category: Ocean Going

Model Year: 2004

Year Built: 2004

Country: United States

Dimensions

LOA: 69' (21.03mm)

Beam: 20

Min Draft: 6' (1.83mm)

Max Draft: 6' 6" (1.98mm)

Speed, Capacities and Weight

Cruise Speed: 10 Knots Kts. (12 MPH)

Cruise Speed Range: 2000

Max Speed: 12 Knots Kts. (14 MPH)

Max Speed Range: 1500 Kts.

Gross Tonnage: 100 Pounds

Water Capacity: 800 Gallons

Holding Tank: 400 Gal Gallons

Fuel Capacity: 3000 Gal Gallons

Accommodations

Total Cabins: 3

Total Berths: 6

Sleeps: 6

Total Heads: 2

Crew Cabin: 2

Crew Berths: 2

Crew Heads: 1

Hull and Deck Information

Hull Material: Steel

Deck Material: Teak

Hull Designer: Tom Fexas

Interior Designer: Michael Peters

Engine Information

Engines: 2

Manufacturer: John Deere

Engine Type: Inboard

Fuel Type: Diesel

PHOTOS

1



2



3



4



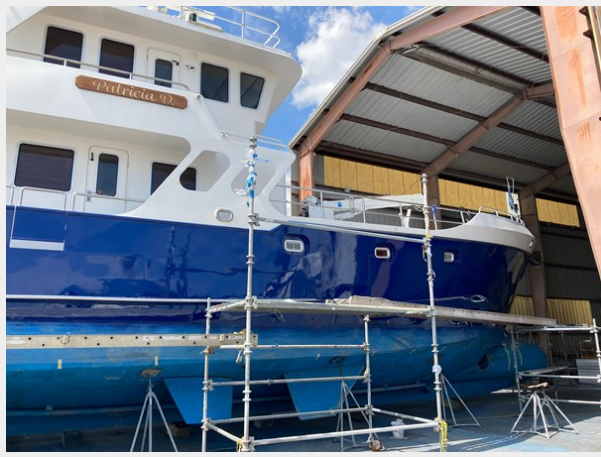
5



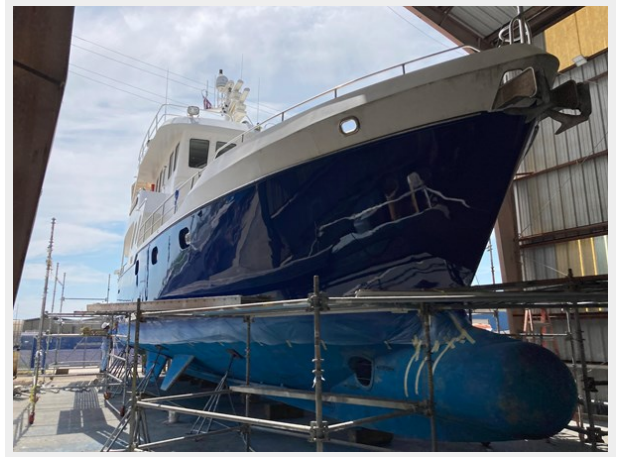
6



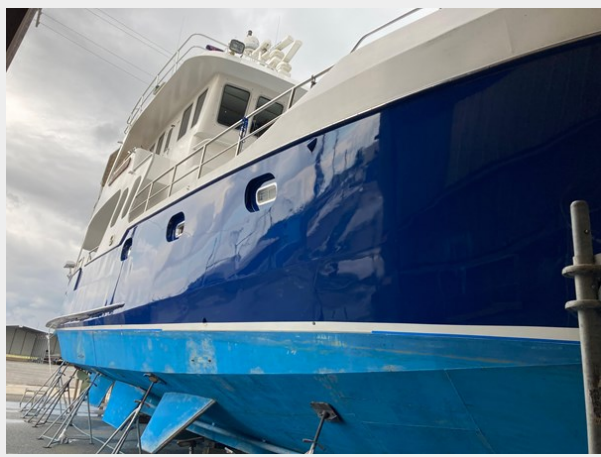
7



8



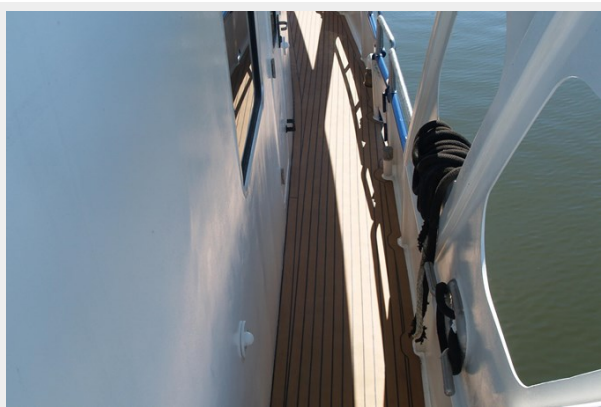
9



10



11



12



13



14



15



16



17



18



19



20



21



22



23



24



25



26



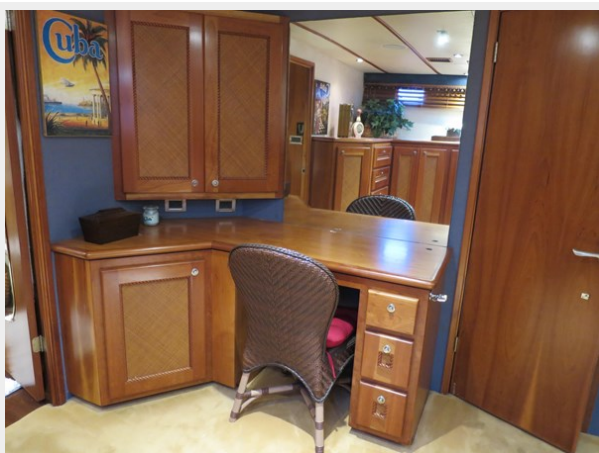
27



28



29



30



31



32



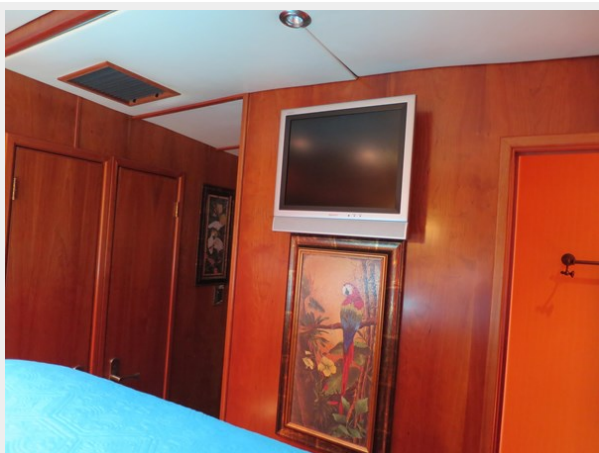
33



34



35



36



37



38



40



39



41



42



43



44



CONTACTS

Andrey Shestakov, leading yacht broker of the sales department of Shestakov Yacht Sales Inc. Shestakov Yacht Sales Inc., the official representative of the Miami/Fort Lauderdale FL headquarters.

Contact details

Email: andrey@shestakovyachtsales.com

Web: shestakovyachtsales.com/en/

Telephones

USA: +1(954)274-4435

Office hours

Monday – Saturday: **9:00 - 21:00** EDT

Sunday: **closed**

Address



Harbour Towne Marina, 850 NE 3rd St,
STE 213, Dania, FL 33004