

HIGH RISK — POST YACHTS



Builder: POST YACHTS

Year Built: 1997

Model: Sport Fisherman

Price: \$350,000 USD

Location: United States

LOA: 50' (15.24mm)

Beam: 16.17

Min Draft: 4' 6" (1.37mm)

Max Draft: 5' (1.52mm)

Cruise Speed: 22 Knots Kts. (25 MPH)

Max Speed: 28 Knots Kts. (32 MPH)

Our experienced yacht broker, Andrey Shestakov, will help you choose and buy a yacht that best suits your needs **High Risk — POST YACHTS** from our catalogue. Presently, at Shestakov Yacht Sales Inc., we have a wide variety of yachts available on our sale's list. We also work in close contact with all the big yacht manufacturers from all over the world.

If you would like to buy a yacht **High Risk — POST YACHTS** or would like help answering any questions concerning purchasing, selling or chartering a yacht, please call **+1(954)274-4435**

TABLE OF CONTENTS

| | |
|------------------------------|----|
| TABLE OF CONTENTS | 2 |
| SPECIFICATIONS | 4 |
| Overview | 4 |
| Basic Information | 5 |
| Dimensions | 5 |
| Speed, Capacities and Weight | 5 |
| Accommodations | 5 |
| Hull and Deck Information | 5 |
| Engine Information | 6 |
| PHOTOS | 7 |
| 1 | 7 |
| 2 | 7 |
| 3 | 7 |
| 4 | 7 |
| 5 | 7 |
| 6 | 7 |
| 8 | 8 |
| 7 | 8 |
| 10 | 8 |
| 9 | 8 |
| 11 | 9 |
| 12 | 9 |
| 13 | 9 |
| 14 | 9 |
| 16 | 9 |
| 15 | 9 |
| 17 | 10 |
| 18 | 10 |

| | |
|-----------------|----|
| 19 | 10 |
| CONTACTS | 11 |
| Contact details | 11 |
| Telephones | 11 |
| Office hours | 11 |
| Address | 11 |

SPECIFICATIONS

Overview

Manufacturer Provided

Post Marine's Post 50s, and the crews that fish them, have been a factor on the tournament circuit since the yacht's introduction in 1986. With the continuing input of these seasoned anglers, both the 50's performance and functionality have been substantially enhanced over the years. This 50 offers a well thought-out cockpit. The fiberglass sole is reinforced to accommodate the largest fighting chairs, while the non-slip finish provides safe footing. To keep the cockpit clear, molded fiberglass stowage cabinets offer plenty of space for tackle and gear. In addition, there's a full rigging station with sink, a top loading refrigerator and freezer, and a walk-through transom door with gate and gel coated fish wells. From the cockpit, walk-in engine room access affords quick response to any situations that may require attention while underway. The completely gel-coated engine room has more than enough light and space to easily reach and maintain all vital engine parts. The 50's expanded bridge features wrap-around lounge seating forward and to port with rod storage below. Additional scuppered storage areas are found forward and beneath the console that has been designed to accommodate a full array of flush mounted electronics. Full instrumentation - including a monitoring system for bilge blowers, lights and pumps, Halon system and generator - is standard. Excellent 360 visibility from the helm makes monitoring cockpit action easy. The 50's luxurious salon features all of the amenities one would expect to find aboard a world class yacht including: a complete entertainment center with remote 26-inch color TV, AM-FM stereo and CD player, a comfortable L-shaped dinette with storage below, and an L-shaped lounge with sleeper hideaway, all surrounded by an abundance of richly finished cabinetry and smart designer fabrics. Standard galley features include a Corian counter top, two-burner electric range, microwave - convection oven, full-size refrigerator - freezer, and an abundance of drawer storage. The plan B master stateroom features a queen-size walk-around berth surrounded by richly finished cabinetry, full-length, cedar-lined hanging locker, individual climate controls, a large screened hatch overhead, and an adjoining private head with a fully-enclosed stall shower, oversized vanity, and opening hatch. The plan B forward guest stateroom features over and under transverse bunks with storage above and below - double berth option available, a hanging locker, large screened hatch, and individual climate controls. The portside guest stateroom features comfortable over and under bunks with generous drawer storage below and a large screened hatch overhead. The guest head, with its private entrance, includes an enclosed stall shower, molded vanity with more than ample storage above and below for towels and personal items. A soft-riding hull with sharp bow entry and increased deadrise throughout, provides maximum stability and efficiency for a more comfortable ride to and from the fishing grounds. The 50's solid glass hull, with its Vinylester resin barrier, is cored with Divinycell above the waterline. Post hulls have been long known for their fish-raising ability; these hulls have fiberglass encapsulated wooden engine beds - an important factor in deadening engine noise and vibration without sacrificing structural integrity. The exacting fit and finish of the bulkheads, stringers, and deck joints ultimately determine the long-term integrity of each and every Post

Yacht.

Basic Information

Category: Sport Fisherman

Model Year: 1997

Year Built: 1997

Country: United States

Dimensions

LOA: 50' (15.24mm)

Beam: 16.17

Min Draft: 4' 6" (1.37mm)

Max Draft: 5' (1.52mm)

Speed, Capacities and Weight

Cruise Speed: 22 Knots Kts. (25 MPH)

Cruise Speed Range: 345

Max Speed: 28 Knots Kts. (32 MPH)

Max Speed Range: 280 Kts.

Gross Tonnage: 49 Pounds

Water Capacity: 120 Gallons

Holding Tank: 40 Gal Gallons

Fuel Capacity: 776 Gal Gallons

Accommodations

Total Cabins: 3

Total Berths: 6

Sleeps: 6

Total Heads: 2

Hull and Deck Information

Hull Material: Fiberglass

Deck Material: Fiberglass

Hull Configuration: Modified V-Hull

Hull Designer: Post Marine

Interior Designer: Post Marine

Engine Information

Engines: 2

Manufacturer: MAN

Engine Type: Inboard

Fuel Type: Diesel

PHOTOS

1



2



3



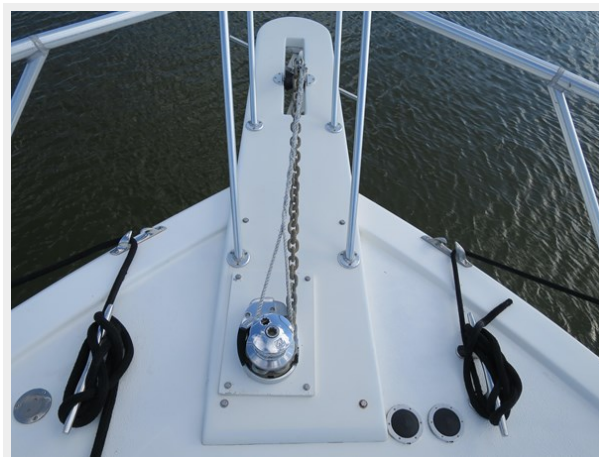
4



5



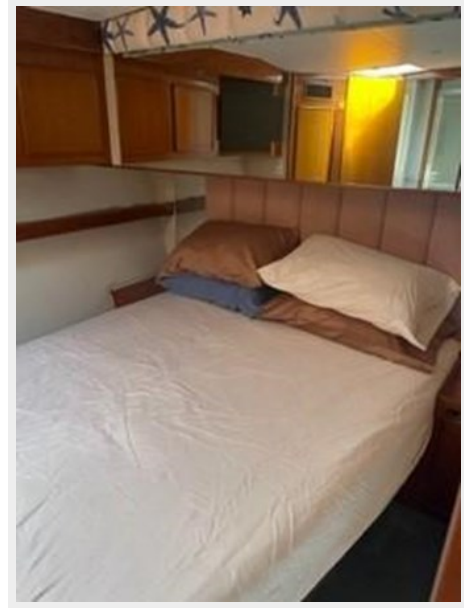
6



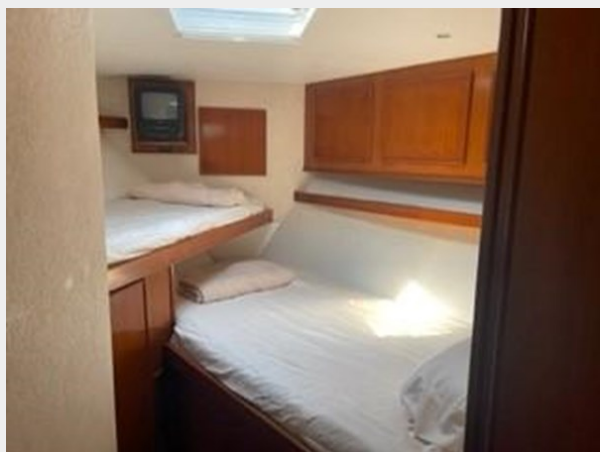
7



8



9



10



11



12



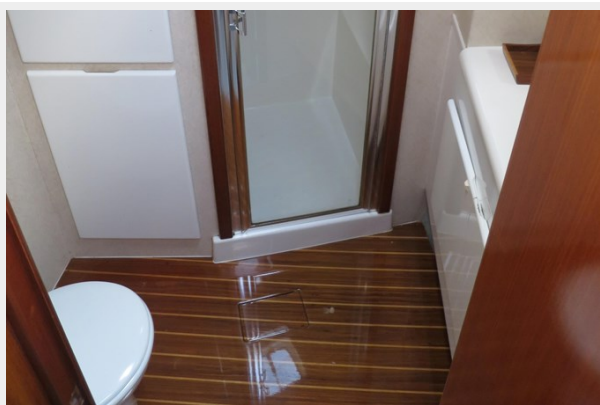
13



14



15



16



17



18



19



CONTACTS

Andrey Shestakov, leading yacht broker of the sales department of Shestakov Yacht Sales Inc. Shestakov Yacht Sales Inc., the official representative of the Miami/Fort Lauderdale FL headquarters.

Contact details

Email: **andrey@shestakovyachtsales.com**

Web: shestakovyachtsales.com/en/

Telephones

USA: **+1(954)274-4435**

Office hours

Monday – Saturday: **9:00 - 21:00 EDT**

Sunday: **closed**

Address



Harbour Towne Marina, 850 NE 3rd St,
STE 213, Dania, FL 33004