

FU-LYN-SU — CAMARGUE



Builder: CAMARGUE

Year Built: 1989

Model: Cockpit

Price: \$150,000 USD

Location: United States

LOA: 48' (14.63mm)

Beam: 14.76

Min Draft: 3' 6" (1.07mm)

Max Draft: 4' 6" (1.37mm)

Cruise Speed: 15 Knots Kts. (17 MPH)

Max Speed: 22 Knots Kts. (25 MPH)

Our experienced yacht broker, Andrey Shestakov, will help you choose and buy a yacht that best suits your needs **FU-LYN-SU — CAMARGUE** from our catalogue. Presently, at Shestakov Yacht Sales Inc., we have a wide variety of yachts available on our sale's list. We also work in close contact with all the big yacht manufacturers from all over the world.

If you would like to buy a yacht **FU-LYN-SU — CAMARGUE** or would like help answering any questions concerning purchasing, selling or chartering a yacht, please call **+1(954)274-4435**

TABLE OF CONTENTS

TABLE OF CONTENTS	2
SPECIFICATIONS	4
Overview	4
Basic Information	4
Dimensions	4
Speed, Capacities and Weight	4
Accommodations	5
Hull and Deck Information	5
Engine Information	5
PHOTOS	6
1	6
2	6
3	6
4	6
5	7
6	7
7	7
8	7
9	8
10	8
11	8
12	8
13	8
14	8
16	9
15	9
17	9
18	9

CONTACTS	10
Contact details	10
Telephones	10
Office hours	10
Address	10

SPECIFICATIONS

Overview

Huge Spacious Aft Cabin - Very Capable Coastal Cruiser Excellent - LIVE ABOARD! This Motoryacht was built by Camargue Company Ltd. She is based on the Camargue 42 Motoryacht but was extended 6 ft. to accommodate the rear salon, which allows for increased performance due to the longer waterline length and provides better access to the water for fishing, swimming and other water sports. She is 54 ft Overall. The Camarque is regarded as a well built, good looking boat with above average build quality and attention to detail. General walk through: The salon and dining area are entered on centerline from the aft deck and down four steps. Forward of the salon and down three steps, is the galley, with full size refrigerator /freezer. The guest stateroom is in the bow and features a private head with shower. Moving aft from the salon down three steps on starboard, you will find the master stateroom with a private head and stall shower.

Basic Information

Category: Cockpit

Sub Category: Cockpit

Model Year: 1989

Year Built: 1989

Country: United States

Dimensions

LOA: 48' (14.63mm)

Beam: 14.76

Min Draft: 3' 6" (1.07mm)

Max Draft: 4' 6" (1.37mm)

Speed, Capacities and Weight

Cruise Speed: 15 Knots Kts. (17 MPH)

Cruise Speed Range: 200

Max Speed: 22 Knots Kts. (25 MPH)

Max Speed Range: 150 Kts.

Gross Tonnage: 35 Pounds

Water Capacity: 200 Gallons

Holding Tank: 40 Gal Gallons

Fuel Capacity: 400 Gal Gallons

Accommodations

Total Cabins: 3

Total Berths: 5

Sleeps: 6

Total Heads: 2

Crew Cabin: 2

Crew Berths: 2

Crew Heads: 1

Hull and Deck Information

Hull Material: Fiberglass

Deck Material: Teak

Hull Configuration: Monohull

Hull Designer: Don Shead

Interior Designer: Sunseeker

Engine Information

Engines: 2

Manufacturer: Luggier

Engine Type: Inboard

Fuel Type: Diesel

PHOTOS

1



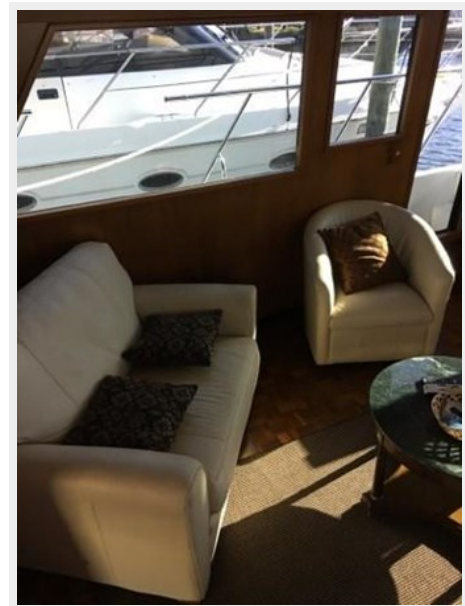
2



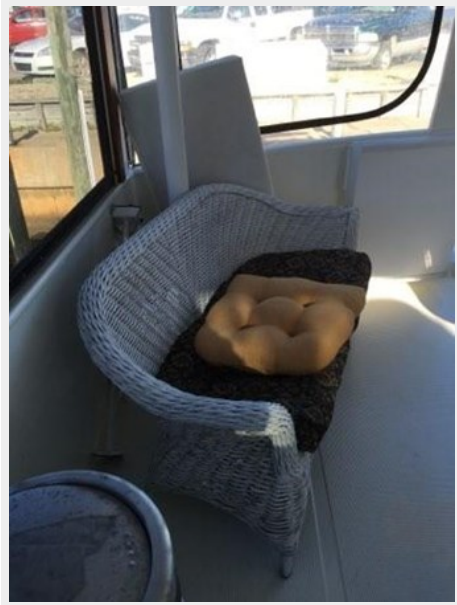
3



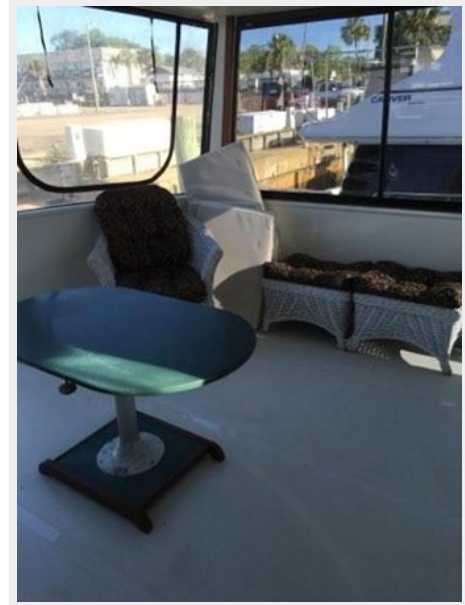
4



5



6



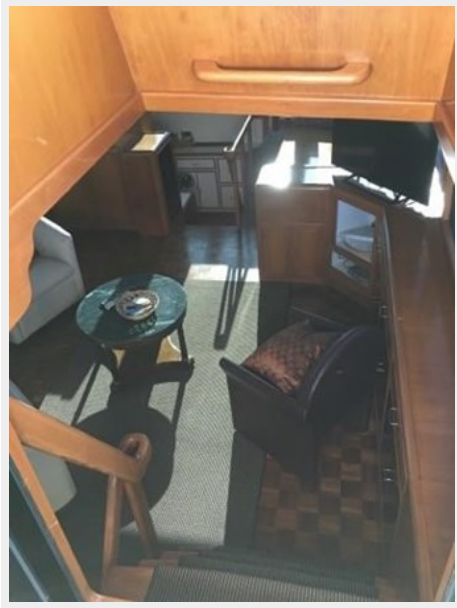
7



8



9



10



11



12



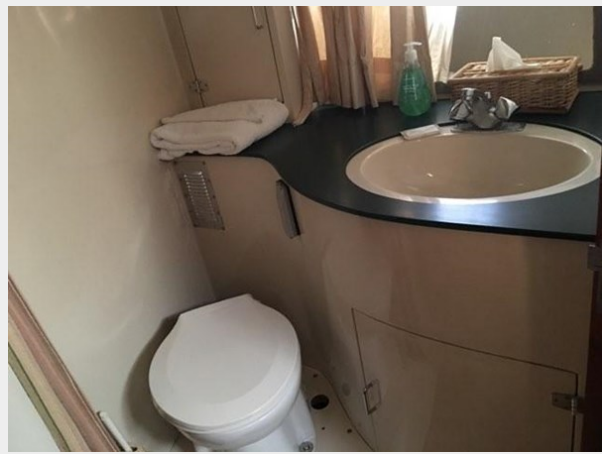
13



14



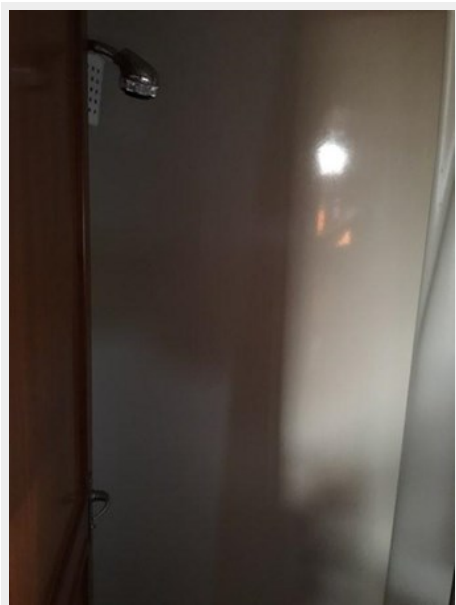
15



16



17



18



CONTACTS

Andrey Shestakov, leading yacht broker of the sales department of Shestakov Yacht Sales Inc. Shestakov Yacht Sales Inc., the official representative of the Miami/Fort Lauderdale FL headquarters.

Contact details

Email: andrey@shestakovyachtsales.com

Web: shestakovyachtsales.com/en/

Telephones

USA: +1(954)274-4435

Office hours

Monday – Saturday: **9:00 - 21:00** EDT

Sunday: **closed**

Address



Harbour Towne Marina, 850 NE 3rd St,
STE 213, Dania, FL 33004