

## FOUNTAIN 34 CC — FOUNTAIN



**Builder:** FOUNTAIN

**Year Built:** 2008

**Model:** Boats

**Price:** PRICE ON APPLICATION

**Location:** United States

**LOA:** 34' (10.36mm)

**Beam:** 9.5

**Min Draft:** 2' (0.61mm)

**Max Draft:** 2' 7" (0.79mm)

**Cruise Speed:** 45 Knots Kts. (52 MPH)

**Max Speed:** 75 Knots Kts. (86 MPH)

Our experienced yacht broker, Andrey Shestakov, will help you choose and buy a yacht that best suits your needs **FOUNTAIN 34 CC — FOUNTAIN** from our catalogue. Presently, at Shestakov Yacht Sales Inc., we have a wide variety of yachts available on our sale's list. We also work in close contact with all the big yacht manufacturers from all over the world.

If you would like to buy a yacht **FOUNTAIN 34 CC — FOUNTAIN** or would like help answering any questions concerning purchasing, selling or chartering a yacht, please call **+1(954)274-4435**

# TABLE OF CONTENTS

---

TABLE OF CONTENTS	2
SPECIFICATIONS	5
Overview	5
Basic Information	5
Dimensions	5
Speed, Capacities and Weight	5
Accommodations	5
Hull and Deck Information	5
Engine Information	6
PHOTOS	7
Resized_image000000	7
IMG_7216	7
IMG_7179	7
IMG_7205	7
IMG_7180	8
IMG_7141	8
IMG_7213	8
IMG_7210	8
IMG_7209	8
IMG_7181	8
IMG_7211	9
IMG_7207	9
IMG_7142	9
IMG_7143	9
IMG_7144	9
IMG_7145	9
IMG_7146	10
IMG_7148	10

---

IMG_7149	10
IMG_7150	10
IMG_7151	10
IMG_7152	10
IMG_7154	11
IMG_7153	11
IMG_7156	11
IMG_7155	11
IMG_7157	11
IMG_7158	11
IMG_7159	12
IMG_7160	12
IMG_7161	12
IMG_7163	12
IMG_7164	12
IMG_7165	12
IMG_7166	13
IMG_7167	13
IMG_7168	13
IMG_7169	13
IMG_7170	13
IMG_7171	13
IMG_7173	14
IMG_7172	14
IMG_7174	14
IMG_7175	14
IMG_7176	14
IMG_7177	14
IMG_7178	15

---

---

IMG_7182	15
IMG_7183	15
IMG_7188	15
IMG_7189	15
IMG_7190	15
IMG_7192	16
IMG_7191	16
IMG_7194	16
IMG_7193	16
IMG_7195	16
IMG_7196	16
IMG_7197	17
IMG_7232	17
IMG_7233	17
IMG_7234	17
IMG_7147	17
IMG_7185	17
IMG_7184	18
IMG_7162	18
CONTACTS	19
Contact details	19
Telephones	19
Office hours	19
Address	19

---

# SPECIFICATIONS

---

## Overview

---

NEW TO THE MARKET: 2008 Fountain 34' CC powered with triple 2016 350 Verados. Kept on a dry lift with cover. No hurricane damage.

## Basic Information

---

**Category:** Boats

**Model Year:** 2008

**Year Built:** 2008

**Country:** United States

## Dimensions

---

**LOA:** 34' (10.36mm)

**Beam:** 9.5

**Min Draft:** 2' (0.61mm)

**Max Draft:** 2' 7" (0.79mm)

## Speed, Capacities and Weight

---

**Cruise Speed:** 45 Knots Kts. (52 MPH)

**Max Speed:** 75 Knots Kts. (86 MPH)

**Water Capacity:** 30 Gallons

**Fuel Capacity:** 300 Gal Gallons

## Accommodations

---

**Total Heads:** 1

## Hull and Deck Information

---

**Hull Material:** Fiberglass

---

## Engine Information

---

**Engines:** 3

**Manufacturer:** Mercury

**Engine Type:** Outboard

**Fuel Type:** Gas/Petrol

# PHOTOS

Resized\_image000000



IMG\_7216



IMG\_7205



IMG\_7179





IMG\_7180



IMG\_7141



IMG\_7213



IMG\_7210



IMG\_7209



IMG\_7181





IMG\_7211



IMG\_7207



IMG\_7142



IMG\_7143



IMG\_7144



IMG\_7145





IMG\_7146



IMG\_7148



IMG\_7149



IMG\_7150



IMG\_7151



IMG\_7152



IMG\_7153



IMG\_7154



IMG\_7155



IMG\_7156



IMG\_7157



IMG\_7158





IMG\_7159



IMG\_7160



IMG\_7161



IMG\_7163



IMG\_7164



IMG\_7165



IMG\_7166



IMG\_7167



IMG\_7168



IMG\_7169



IMG\_7170



IMG\_7171





IMG\_7172



IMG\_7173



IMG\_7174



IMG\_7175



IMG\_7176



IMG\_7177



IMG\_7178



IMG\_7182



IMG\_7183



IMG\_7188



IMG\_7189



IMG\_7190





IMG\_7191



IMG\_7192



IMG\_7193



IMG\_7194



IMG\_7195



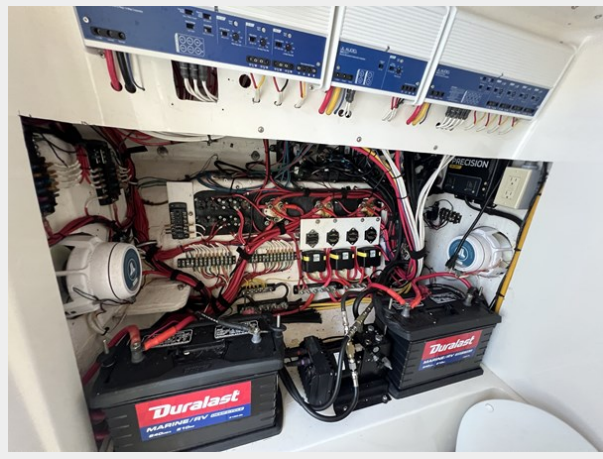
IMG\_7196



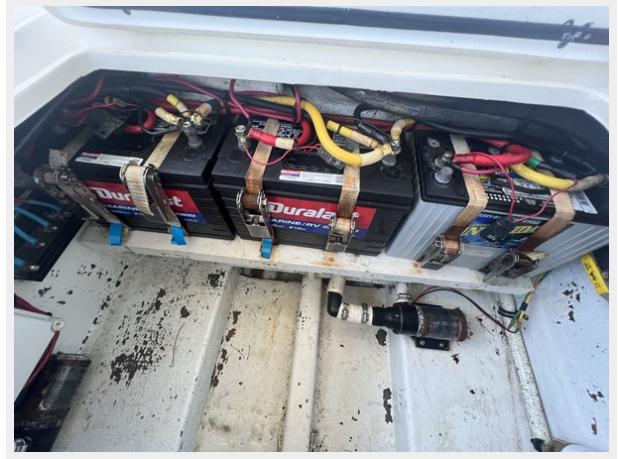




IMG\_7184



IMG\_7162





---

# CONTACTS

---

Andrey Shestakov, leading yacht broker of the sales department of Shestakov Yacht Sales Inc. Shestakov Yacht Sales Inc., the official representative of the Miami/Fort Lauderdale FL headquarters.

---

## Contact details

---

Email: [andrey@shestakovyachtsales.com](mailto:andrey@shestakovyachtsales.com)

Web: [shestakovyachtsales.com/en/](http://shestakovyachtsales.com/en/)

---

## Telephones

---

USA: +1(954)274-4435

---

## Office hours

---

Monday – Saturday: **9:00 - 21:00** EDT

Sunday: **closed**

---

## Address

---



Harbour Towne Marina, 850 NE 3rd St,  
STE 213, Dania, FL 33004