

SEA RAY 320 SUNDANCER — SEA RAY



Builder: [SEA RAY](#)

Year Built: 2005

Model: Boats

Price: PRICE ON APPLICATION

Location: United States

LOA: 33' (10.06mm)

Beam: 11.41

Min Draft: 2' (0.61mm)

Max Draft: 2' 9" (0.84mm)

Cruise Speed: 28 Knots Kts. (32 MPH)

Max Speed: 35 Knots Kts. (40 MPH)

Our experienced yacht broker, Andrey Shestakov, will help you choose and buy a yacht that best suits your needs **SEA RAY 320 SUNDANCER — SEA RAY** from our catalogue. Presently, at Shestakov Yacht Sales Inc., we have a wide variety of yachts available on our sale's list. We also work in close contact with all the big yacht manufacturers from all over the world.

If you would like to buy a yacht **SEA RAY 320 SUNDANCER — SEA RAY** or would like help answering any questions concerning purchasing, selling or chartering a yacht, please call **+1(954)274-4435**

TABLE OF CONTENTS

TABLE OF CONTENTS	2
SPECIFICATIONS	5
Overview	5
Basic Information	6
Dimensions	6
Speed, Capacities and Weight	6
Accommodations	6
Hull and Deck Information	6
Engine Information	7
PHOTOS	8
dji_fly_20231011_125500_111_1697054323207_photo	8
dji_fly_20231011_125442_110_1697054318609_photo	8
dji_fly_20231011_125508_112_1697054329317_photo	8
dji_fly_20231011_125522_113_1697054355828_photo	8
dji_fly_20231011_125530_114_1697054339457_photo	8
dji_fly_20231011_125544_115_1697054342775_photo	8
dji_fly_20231011_125552_116_1697054346376_photo	8
dji_fly_20231011_125604_117_1697054350499_photo	8
dji_fly_20231011_125614_118_1697054361296_photo	9
dji_fly_20231011_125622_119_1697054364296_photo	9
dji_fly_20231011_125654_123_1697054377925_photo	9
dji_fly_20231011_125646_122_1697054374815_photo	9
dji_fly_20231011_125706_125_1697054386407_photo	9
dji_fly_20231011_125714_126_1697054390428_photo	9
dji_fly_20231011_125722_127_1697054394409_photo	9
dji_fly_20231011_125732_128_1697054400744_photo	9
dji_fly_20231011_125740_129_1697054404091_photo	10
dji_fly_20231011_125752_130_1697054407872_photo	10

dji_fly_20231011_125808_132_1697054413945_photo	10
dji_fly_20231011_125802_131_1697054411094_photo	10
dji_fly_20231011_125912_137_1697054435039_photo	10
dji_fly_20231011_125902_136_1697054430912_photo	10
IMG_5530	10
IMG_5531	10
IMG_5532	11
IMG_5533	11
IMG_5535	11
IMG_5536	11
IMG_5537	11
IMG_5538	11
IMG_5539	12
IMG_5540	12
IMG_5541	12
IMG_5542	12
IMG_5543	12
IMG_5544	12
IMG_5545	13
IMG_5546	13
IMG_5547	13
IMG_5548	13
IMG_5549	13
IMG_5550	13
IMG_5551	14
IMG_5552	14
IMG_5553	14
IMG_5554	14
IMG_5555	14

IMG_5556	14
IMG_5557	15
IMG_5558	15
IMG_5559	15
IMG_5560	15
IMG_5561	15
IMG_5562	15
IMG_5563	16
IMG_5564	16
IMG_5565	16
IMG_5566	16
IMG_5567	16
IMG_5568	16
IMG_5569	17
IMG_5570	17
IMG_5573	17
IMG_5571	17
IMG_5574	17
IMG_5575	17
IMG_5576	18
IMG_5577	18
IMG_5578	18
CONTACTS	19
Contact details	19
Telephones	19
Office hours	19
Address	19

SPECIFICATIONS

Overview

2005 Sea Ray 320 Sundancer ready for new adventures on the water. This express cruiser combines elegance and performance, featuring a spacious cabin with comfortable sleeping accommodations, a well-appointed galley, and a generous cockpit for entertaining. Powered by twin inboard Mercruiser 350 5.7 engines, it offers a smooth and reliable ride. Equipped with modern navigation and entertainment systems, this vessel is perfect for cruising or weekend getaways. Don't miss out on the opportunity to own this classic Sea Ray. The vessel needs cosmetic tender love and care.

Cons:

- Upholstery needs to be redone
- Gel coat could use a 2-3 stage correction
- New cocking is needed in some areas
- Overall the boat needs a good detail
- The price reflects the work needed to be done

Helm:

- Nav Lights
- Anchor Lights
- Cockpit Lights
- Bilge pump switch
- Windless
- Horn
- Window Wipers
- Hatch Lift
- Trim tabs
- Garmin Gps map 541s
- Ray marine hybrid touch

Electronics:

- JL Audio Speakers
- Jensen radio
- Ambient lighting
- Garmin VHF
- Kohler Generator
- Cockpit:
- U shaped seating
- removable counter top table
- Twin captains chairs
- JL Audio speakers
- sink
- fridge
- storage compartment
- Cabin:
- Single head
- fwd section berth
- stair case
- L shaped sofa

- 12 volt Dc electric panel Galley
- marble counter top
- microwave
- sink
- fridge
- storage compartments
- induction grill

Head:

- Toilet
- natural lighting
- sink
- extra storage

Basic Information

Category: Boats

Model Year: 2005

Year Built: 2005

Country: United States

Dimensions

LOA: 33' (10.06mm)

LWL: 32' (9.75mm)

LOD: 35' (10.67mm)

Beam: 11.41

Min Draft: 2' (0.61mm)

Max Draft: 2' 9" (0.84mm)

Speed, Capacities and Weight

Cruise Speed: 28 Knots Kts. (32 MPH)

Max Speed: 35 Knots Kts. (40 MPH)

Water Capacity: 40 Gallons

Holding Tank: 28 Gal Gallons

Fuel Capacity: 200 Gal Gallons

Accommodations

Total Cabins: 1

Total Heads: 1

Hull and Deck Information

Hull Material: Fiberglass

Engine Information

Engines: 2

Manufacturer: Mercruiser

Engine Type: Inboard

Fuel Type: Gas/Petrol

PHOTOS

dji_fly_20231011_125500_111_1697054323207_photo



dji_fly_20231011_125442_110_1697054318609_photo



dji_fly_20231011_125508_112_1697054329317_photo



dji_fly_20231011_125522_113_1697054355828_photo



dji_fly_20231011_125530_114_1697054339457_photo dji_fly_20231011_125544_115_1697054342775_photo



dji_fly_20231011_125552_116_1697054346376_photo dji_fly_20231011_125604_117_1697054350499_photo



dji_fly_20231011_125614_118_1697054361296_photo



dji_fly_20231011_125622_119_1697054364296_photo



dji_fly_20231011_125646_122_1697054374815_photo



dji_fly_20231011_125654_123_1697054377925_photo



dji_fly_20231011_125706_125_1697054386407_photo



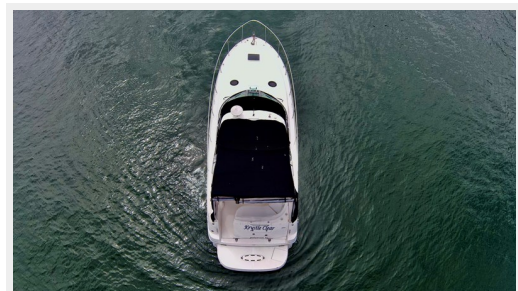
dji_fly_20231011_125714_126_1697054390428_photo



dji_fly_20231011_125722_127_1697054394409_photo



dji_fly_20231011_125732_128_1697054400744_photo



dji_fly_20231011_125740_129_1697054404091_photo dji_fly_20231011_125752_130_1697054407872_photo



dji_fly_20231011_125802_131_1697054411094_photo dji_fly_20231011_125808_132_1697054413945_photo



dji_fly_20231011_125902_136_1697054430912_photo dji_fly_20231011_125912_137_1697054435039_photo



IMG_5530



IMG_5531



IMG_5532



IMG_5533



IMG_5535



IMG_5536



IMG_5537



IMG_5538



IMG_5539



IMG_5540



IMG_5541



IMG_5542



IMG_5543



IMG_5544



IMG_5545



IMG_5546



IMG_5547



IMG_5548



IMG_5549



IMG_5550



IMG_5551



IMG_5552



IMG_5553



IMG_5554



IMG_5555



IMG_5556



IMG_5557



IMG_5558



IMG_5559



IMG_5560



IMG_5561



IMG_5562



IMG_5563



IMG_5564



IMG_5565



IMG_5566



IMG_5567



IMG_5568



IMG_5569



IMG_5570



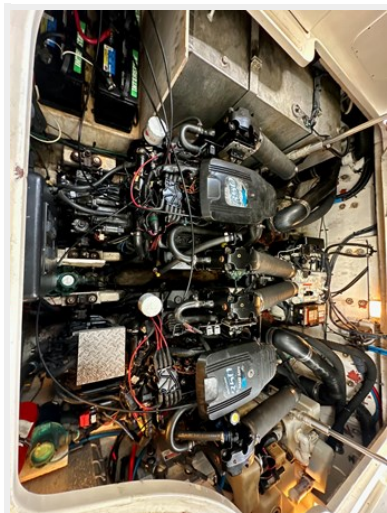
IMG_5573



IMG_5571



IMG_5574



IMG_5575



IMG_5576



IMG_5577



IMG_5578



CONTACTS

Andrey Shestakov, leading yacht broker of the sales department of Shestakov Yacht Sales Inc. Shestakov Yacht Sales Inc., the official representative of the Miami/Fort Lauderdale FL headquarters.

Contact details

Email:
andrey@shestakovyachtsales.com

Web: shestakovyachtsales.com/en/

Telephones

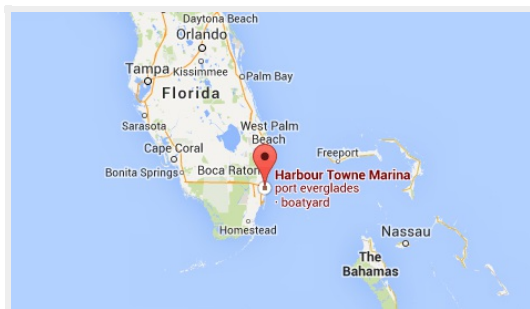
USA: +1(954)274-4435

Office hours

Monday – Saturday: **9:00 - 21:00** EDT

Sunday: **closed**

Address



Harbour Towne Marina, 850 NE 3rd St,
STE 213, Dania, FL 33004