

MISTRESS — RIVIERA



Судостроитель: RIVIERA

Год постройки: 2000

Модель: Convertible

Цена: **ЦЕНА ЯХТЫ ПО ЗАПРОСУ**

Местонахождение: United States

Длина общая: 43' (13.11m)

Ширина: 15.66

Макс. осадка: 4' 2" (1.27m)

Купить **Mistress — RIVIERA** а также выбрать подходящую вам яхту из нашего каталога яхт вам поможет опытный яхтенный брокер Андрей Шестаков. На сегодняшний день компания **Shestakov Yacht Sales Inc.** имеет большое количество яхт в собственном списке продаж, а также тесно сотрудничает со всеми крупными яхтенными производителями по всему миру.

Для того чтобы купить яхту **Mistress — RIVIERA** а также проконсультироваться по любому вопросу связанному с покупкой, продажей, чартером яхт позвоните по телефону **+7(918)465-66-44**.

ОГЛАВЛЕНИЕ

ОГЛАВЛЕНИЕ	2
ХАРАКТЕРИСТИКИ	5
Обзор	5
Основная информация	6
Размеры	6
Скорость, вместимость и масса	7
Размещение	7
Корпус и палуба	7
Информация о двигателе	7
ФОТОГРАФИИ	8
9051454_20230920063655673_1_XLARGE	8
9051454_20230920063658990_1_XLARGE	8
9051454_20230920063704807_1_XLARGE	8
9051454_20230920063701940_1_XLARGE	8
9051454_20230920063710859_1_XLARGE	8
9051454_20230920063732328_1_XLARGE	8
9051454_20230920063735235_1_XLARGE	9
9051454_20230920063748307_1_XLARGE	9
9051454_20230920063751172_1_XLARGE	9
9051454_20230920063754178_1_XLARGE	9
9051454_20230920063757559_1_XLARGE	9
9051454_20230920063726118_1_XLARGE	9
9051454_20230920063714103_1_XLARGE	10
9051454_20230920063719835_1_XLARGE	10
9051454_20230920063716871_1_XLARGE	10
9051454_20230920063729008_1_XLARGE	10
9051454_20230920063810364_1_XLARGE	10
9051454_20230920063813480_1_XLARGE	10

9051454_20230920063819488_1_XLARGE	11
9051454_20230920063816414_1_XLARGE	11
9051454_20230920063822487_1_XLARGE	11
9051454_20230920063825628_1_XLARGE	11
9051454_20230920063828668_1_XLARGE	11
9051454_20230920063831587_1_XLARGE	11
9051454_20230920063804400_1_XLARGE	12
9051454_20230920063834839_1_XLARGE	12
9051454_20230920063722924_1_XLARGE	12
9051454_20230920063837690_1_XLARGE	12
9051454_20230920063840747_1_XLARGE	12
9051454_20230920063903186_1_XLARGE	12
9051454_20230920063843906_1_XLARGE	13
9051454_20230920063859239_1_XLARGE	13
9051454_20230920063855920_1_XLARGE	13
9051454_20230920063906039_1_XLARGE	13
9051454_20230920063909026_1_XLARGE	13
9051454_20230920063915233_1_XLARGE	13
9051454_20230920063921271_1_XLARGE	14
9051454_20230920063918259_1_XLARGE	14
9051454_20230920063924284_1_XLARGE	14
9051454_20230920063927432_1_XLARGE	14
9051454_20230920063930296_1_XLARGE	15
9051454_20230920063936406_1_XLARGE	15
9051454_20230920063939497_1_XLARGE	15
9051454_20230920063942345_1_XLARGE	15
9051454_20230920063945323_1_XLARGE	16
9051454_20230920063933305_1_XLARGE	16
9051454_20230920063948583_1_XLARGE	16

9051454_20230920064011126_1_XLARGE	16
9051454_20230920063952476_1_XLARGE	16
9051454_20230920064013904_1_XLARGE	16
9051454_20230920063959993_1_XLARGE	17
9051454_20230920064007718_1_XLARGE	17
9051454_20230920064003889_1_XLARGE	17
9051454_20230920064020896_1_XLARGE	17
9051454_20230920064023989_1_XLARGE	18
9051454_20230920064027037_1_XLARGE	18
9051454_20230920064030019_1_XLARGE	18
9051454_20230920064039080_1_XLARGE	18
9051454_20230920064036187_1_XLARGE	18
9051454_20230920064033025_1_XLARGE	18
9051454_20230920064045266_1_XLARGE	19
9051454_20230920064051170_1_XLARGE	19
9051454_20230920064054229_1_XLARGE	19
9051454_20230920064042079_1_XLARGE	19
9051454_20230920064048193_1_XLARGE	19
9051454_20230920064057538_1_XLARGE	19
9051454_20230920063634434_1_XLARGE	20
9051454_20230920063626382_1_XLARGE	20
9051454_20230920063652536_1_XLARGE	20
КОНТАКТЫ	21
Контактная информация	21
Телефоны	21
Время работы	21
Адрес	21

ХАРАКТЕРИСТИКИ

Обзор

Mistress is set up for extended cruising and diving at your favorite local spots or in the pristine waters of the Bahamas. The current owner has used her extensively as a stable, reliable dive platform.

When you board Mistress from the dock, you will step onto a spacious swim platform that also has a large, diver friendly boarding ladder. From the swim platform, you will enter the aft cockpit through a swinging transom door. The cockpit has a fighting chair for those who would like to try their luck as you cruise to your next locale. There is also ample storage located in several lockers, a cockpit freezer that has been converted to an ice chest as well as two large lazarette areas under the cockpit sole.

From the cockpit you will enter the main salon through a large door. Once in the salon, you will see a large dinette forward and to starboard. There is also a nice I shaped seating area in the aft, port side of the salon. All sofa and dinette cushions have been recently recovered. Entertainment is provided by a large, smart flat screen TV, drinks are kept cold by a steady supply of ice from the U-line ice maker. Climate control is furnished by a Dometic reverse AC system.

Moving forward and down 3 steps you will find a very functional galley located to port. The full size refrigerator/freezer has been recently upgraded. For meal prep you will find a 2 burner, glass top cooking surface as well as a microwave/convection oven. Clean up is made easy by solid surface counter tops and a large, single bowl stainless steel sink.

As you move forward from the galley, you will descend several steps down to the accommodations level. On the starboard side of the hallway you will encounter the first of two staterooms. The VIP has 2 berths, its own climate control unit, as well as a private head that has a separate shower stall. This also serves as the day head.

Forward from here you will pass through another door to the island queen master stateroom. This area also has a flat screen smart TV and a larger, private head also with a shower stall.

The cockpit on this vessel also serves as the access point to the engine room, which is located under the salon sole. In this room you will find two upgraded Cummins QSM 11 engines, each producing a very strong 635HP. The generator is also located in this space on center line, forward of the engines. Maintenance tasks are made easier by the upgraded LED lighting and engine oil change system.

Once again, starting in the cockpit area, you will climb a ladder to access the flybridge area. Here you will be pleased to find a large hard top protecting those underneath from the hot Florida sun as well as other inclement elements. The forward area here contains a spacious seating area as well as plenty of storage. Refreshing beverages are supplied from the refrigerator located under the wet bar. The helm area has been recently upgraded with Garmin electronics, VHF

radio, integrated electronic shift/throttle controls and a tilt steering wheel. There are two helm seats as well.

The forward deck area is large and also serves as the platform for the new anchor windlass and updated all chain anchor rode.

Electronics:

- Garmin 8612 Chart Plotter
- Garmin auto pilot (new)
- Garmin VHF200 Radio
- Garmin color radar.
- Garmin GPS Map 741 redundant plotter
- Cummins digital engine displays
- Fusion stereo system
- KVH TV3 satellite antenna

Generator is an Onan 13.5 KW with 3805 hours.

Don't miss this opportunity to obtain a proven cruising platform!

Основная информация

Тип судна: Convertible

Подкатегория: Convertible

Модельный год: 2000

Год постройки: 2000

Страна: United States

Размеры

Длина общая: 43' (13.11mm)

Ширина: 15.66

Макс. осадка: 4' 2" (1.27mm)

Скорость, вместимость и масса

Чистый вес: 35300 Pounds

Вместимость воды: 164 Gallons

Вместимость сточного бака: 40 Gal
Gallons

Объем топливного бака: 580 Gal Gallons

Размещение

Всего кают: 2

Корпус и палуба

Материал корпуса: Fiberglass

Информация о двигателе

Двигатели: 2

Производитель: Cummings

Тип двигателя: Inboard

Тип топлива: Diesel

ФОТОГРАФИИ

9051454_20230920063655673_1_XLARGE



9051454_20230920063658990_1_XLARGE



9051454_20230920063704807_1_XLARGE



9051454_20230920063701940_1_XLARGE



9051454_20230920063710859_1_XLARGE



9051454_20230920063732328_1_XLARGE



9051454_20230920063735235_1_XLARGE



9051454_20230920063748307_1_XLARGE



9051454_20230920063751172_1_XLARGE



9051454_20230920063754178_1_XLARGE



9051454_20230920063757559_1_XLARGE



9051454_20230920063726118_1_XLARGE



9051454_20230920063714103_1_XLARGE



9051454_20230920063719835_1_XLARGE



9051454_20230920063716871_1_XLARGE



9051454_20230920063729008_1_XLARGE



9051454_20230920063810364_1_XLARGE



9051454_20230920063813480_1_XLARGE



9051454_20230920063819488_1_XLARGE



9051454_20230920063816414_1_XLARGE



9051454_20230920063822487_1_XLARGE



9051454_20230920063825628_1_XLARGE



9051454_20230920063828668_1_XLARGE



9051454_20230920063831587_1_XLARGE



9051454_20230920063804400_1_XLARGE



9051454_20230920063834839_1_XLARGE



9051454_20230920063722924_1_XLARGE



9051454_20230920063837690_1_XLARGE



9051454_20230920063840747_1_XLARGE



9051454_20230920063903186_1_XLARGE



9051454_20230920063843906_1_XLARGE



9051454_20230920063859239_1_XLARGE



9051454_2023092006385920_1_XLARGE



9051454_20230920063906039_1_XLARGE



9051454_20230920063909026_1_XLARGE



9051454_20230920063915233_1_XLARGE



9051454_20230920063921271_1_XLARGE

9051454_20230920063918259_1_XLARGE



9051454_20230920063924284_1_XLARGE



9051454_20230920063927432_1_XLARGE



9051454_20230920063930296_1_XLARGE



9051454_20230920063936406_1_XLARGE



9051454_20230920063939497_1_XLARGE



9051454_20230920063942345_1_XLARGE



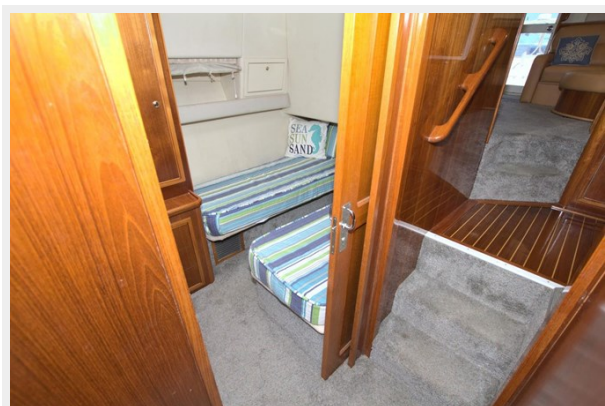
9051454_20230920063945323_1_XLARGE



9051454_20230920063933305_1_XLARGE



9051454_20230920063948583_1_XLARGE



9051454_20230920064011126_1_XLARGE



9051454_20230920063952476_1_XLARGE



9051454_20230920064013904_1_XLARGE



9051454_2023092006395993_1_XLARGE



9051454_20230920064007718_1_XLARGE



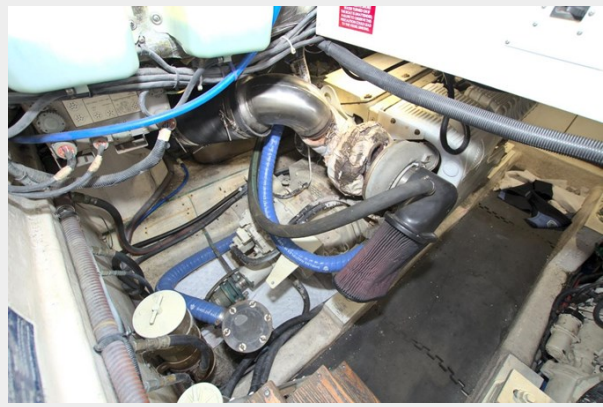
9051454_20230920064003889_1_XLARGE



9051454_20230920064020896_1_XLARGE



9051454_20230920064023989_1_XLARGE



9051454_20230920064027037_1_XLARGE



9051454_20230920064030019_1_XLARGE



9051454_20230920064039080_1_XLARGE



9051454_20230920064036187_1_XLARGE



9051454_20230920064033025_1_XLARGE



9051454_20230920064045266_1_XLARGE



9051454_20230920064051170_1_XLARGE



9051454_20230920064054229_1_XLARGE



9051454_20230920064042079_1_XLARGE



9051454_20230920064048193_1_XLARGE



9051454_20230920064057538_1_XLARGE



9051454_20230920063634434_1_XLARGE



9051454_20230920063626382_1_XLARGE



9051454_20230920063652536_1_XLARGE



КОНТАКТЫ

Андрей Шестаков (Andrey Shestakov) – ведущий яхтенный брокер отдела продаж яхт и судов компании Shestakov Yacht Sales Inc. Официальный представитель Shestakov Yacht Sales Inc. для русскоговорящих клиентов в центральном офисе компании в Майами/Форт Лодердейл/Флорида/США.

Контактная информация

Email: andrey@shestakovyachtsales.com

Web: shestakovyachtsales.com

Телефоны

Краснодарский край: **+7(918)465-66-44**

США, Майами, Флорида: **+1(954)274-4435**

Время работы

Понедельник – Суббота: **9:00 - 21:00**
EDT

Воскресенье: **Закрито**

Адрес



Harbour Towne Marina, 850 NE 3rd St,
STE 213, Dania, FL 33004