

2023 NOVA LUXE ELIGHT 40 SOLAR YACHT — CUSTOM BUILT



Builder: CUSTOM BUILT

Year Built: 2023

Model: Catamaran

Price: \$549,900 USD

Location: United States

LOA: 40' (12.19mm)

Beam: 21

Max Draft: 2' 5" (0.74mm)

Cruise Speed: 6 Knots Kts. (7 MPH)

Max Speed: 10 Knots Kts. (12 MPH)

Our experienced yacht broker, Andrey Shestakov, will help you choose and buy a yacht that best suits your needs **2023 NOVA LUXE ELIGHT 40 SOLAR YACHT — CUSTOM BUILT** from our catalogue. Presently, at Shestakov Yacht Sales Inc., we have a wide variety of yachts available on our sale's list. We also work in close contact with all the big yacht manufacturers from all over the world.

If you would like to buy a yacht **2023 NOVA LUXE ELIGHT 40 SOLAR YACHT — CUSTOM BUILT** or would like help answering any questions concerning purchasing, selling or chartering a yacht, please call **+1(954)274-4435**

TABLE OF CONTENTS

TABLE OF CONTENTS	2
SPECIFICATIONS	3
Overview	3
Basic Information	3
Dimensions	3
Speed, Capacities and Weight	3
Accommodations	3
Hull and Deck Information	4
Engine Information	4
PHOTOS	5
CONTACTS	9
Contact details	9
Telephones	9
Office hours	9
Address	9

SPECIFICATIONS

Overview

The ELIGHT 40 is the ultimate solar electric catamaran in terms of efficiency, range, speed, availability, versatility and enjoyment. After 5 years in the electric catamaran market we have developed the model T for Solar Electric Yachts. Charter and Owners layouts available at prices below 500k! The 48v, 5kwh solar array feeds a 40kWh, 48v battery bank which supplies two 48v, 60kw electric motors. All house electronics are stepped down from 48v making this both a simple and powerful system. Using solar alone speeds approach 5 knots. Enough battery for over 10 hours of operation. Only available in full electric!

Basic Information

Category: Catamaran

Model Year: 2023

Year Built: 2023

Country: United States

Dimensions

LOA: 40' (12.19m)

Beam: 21

Max Draft: 2' 5" (0.74m)

Speed, Capacities and Weight

Cruise Speed: 6 Knots Kts. (7 MPH)

Max Speed: 10 Knots Kts. (12 MPH)

Accommodations

Total Heads: 1

Hull and Deck Information

Hull Material: Fiberglass

Engine Information

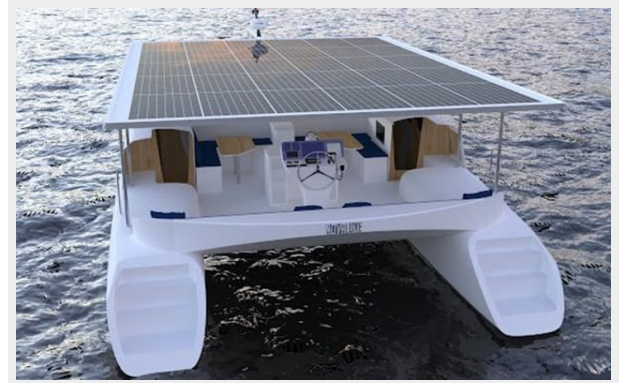
Engines: 2

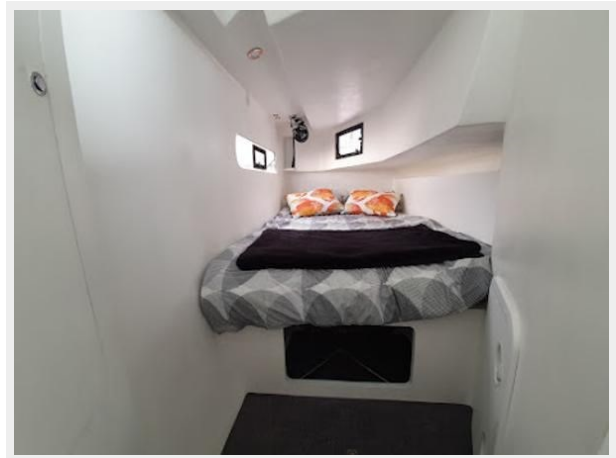
Manufacturer: Electric

Engine Type: Sail Drive

Fuel Type: Electric

PHOTOS









CONTACTS

Andrey Shestakov, leading yacht broker of the sales department of Shestakov Yacht Sales Inc. Shestakov Yacht Sales Inc., the official representative of the Miami/Fort Lauderdale FL headquarters.

Contact details

Email: andrey@shestakovyachtsales.com

Web: shestakovyachtsales.com/en/

Telephones

USA: +1(954)274-4435

Office hours

Monday – Saturday: **9:00 - 21:00** EDT

Sunday: **closed**

Address



Harbour Towne Marina, 850 NE 3rd St,
STE 213, Dania, FL 33004