

2016 AQUILA 44 YACHT — AQUILA



Builder: AQUILA

Year Built: 2016

Model: Catamaran

Price: \$849,900 USD

Location: United States

LOA: 44' (13.41mm)

Beam: 21.5

Min Draft: 3' 3" (0.99mm)

Max Draft: 3' 10" (1.17mm)

Cruise Speed: 14.77 Knots Kts. (17 MPH)

Max Speed: 19.99 Knots Kts. (23 MPH)

Our experienced yacht broker, Andrey Shestakov, will help you choose and buy a yacht that best suits your needs 2016 AQUILA 44 YACHT — AQUILA from our catalogue. Presently, at Shestakov Yacht Sales Inc., we have a wide variety of yachts available on our sale's list. We also work in close contact with all the big yacht manufacturers from all over the world.

If you would like to buy a yacht 2016 AQUILA 44 YACHT — AQUILA or would like help answering any questions concerning purchasing, selling or chartering a yacht, please call **+1(954)274-4435**

TABLE OF CONTENTS

TABLE OF CONTENTS	2
SPECIFICATIONS	3
Overview	3
Basic Information	3
Dimensions	3
Speed, Capacities and Weight	3
Accommodations	4
Hull and Deck Information	4
Engine Information	4
PHOTOS	5
CONTACTS	10
Contact details	10
Telephones	10
Office hours	10
Address	10

SPECIFICATIONS

Overview

The Aquila 44 Power Catamaran was developed to be an exceptionally comfortable cruising boat; placing advanced technology at the forefront of all design and build decisions. Luxury amenities include Yacht Controller, watermaker, 2 Solar Panels, fresh water flush system, spacious salon and galley with 360 degree view, stainless steel sink, fridge and freezer. The 3-cabin, 3-head yacht features a forward cabin that spans her beam of 21' 6" and two aft cabins with ample headroom and large windows. Two of the three en-suite heads include separate shower stalls and teak flooring. The oversized flybridge features Simard electronics package, electric grill, added enclosure and seating on either side of the helm station.

Basic Information

Category: Catamaran

Model Year: 2016

Year Built: 2016

Country: United States

Dimensions

LOA: 44' (13.41mm)

Beam: 21.5

Min Draft: 3' 3" (0.99mm)

Max Draft: 3' 10" (1.17mm)

Speed, Capacities and Weight

Cruise Speed: 14.77 Knots Kts. (17 MPH)

Max Speed: 19.99 Knots Kts. (23 MPH)

Water Capacity: 180 Gallons

Holding Tank: 63 Gal Gallons

Fuel Capacity: 290 Gal Gallons

Accommodations

Total Cabins: 3

Total Berths: 3

Total Heads: 3

Hull and Deck Information

Hull Material: Fiberglass

Engine Information

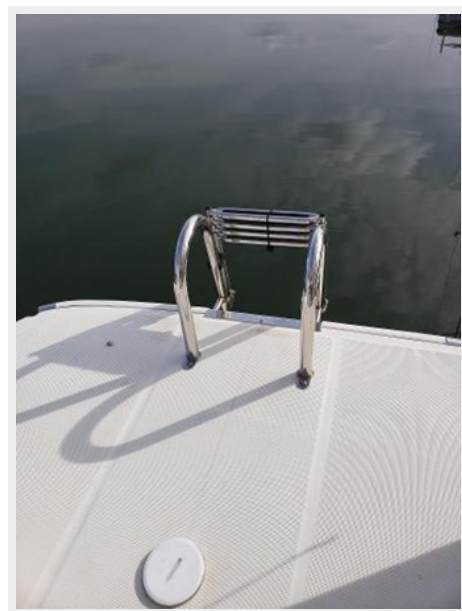
Engines: 2

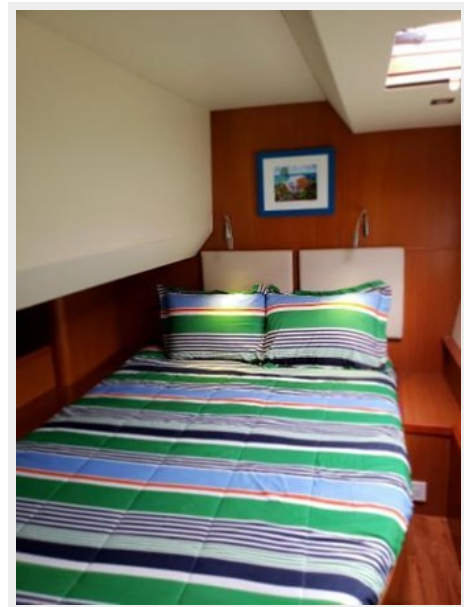
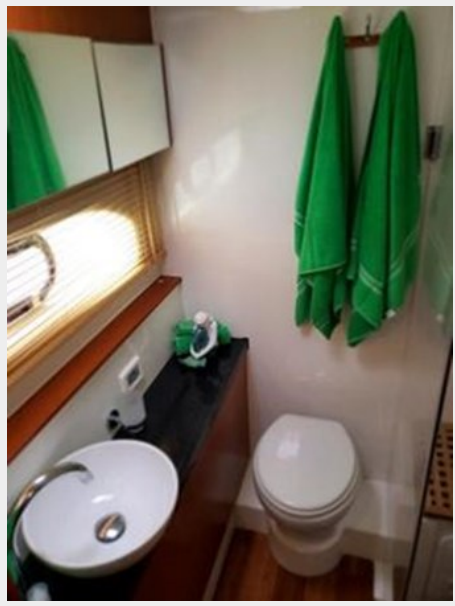
Manufacturer: Volvo Penta

Engine Type: Inboard

Fuel Type: Diesel

PHOTOS











CONTACTS

Andrey Shestakov, leading yacht broker of the sales department of Shestakov Yacht Sales Inc. Shestakov Yacht Sales Inc., the official representative of the Miami/Fort Lauderdale FL headquarters.

Contact details

Email: andrey@shestakovyachtsales.com

Web: shestakovyachtsales.com/en/

Telephones

USA: +1(954)274-4435

Office hours

Monday – Saturday: **9:00 - 21:00** EDT

Sunday: **closed**

Address



Harbour Towne Marina, 850 NE 3rd St,
STE 213, Dania, FL 33004