

2008 CHRIS-CRAFT 36 CORSAIR HERITAGE — CHRIS-CRAFT



Builder: CHRIS-CRAFT

Year Built: 2008

Model: cruiser

Price: \$259,900 USD

Location: United States

LOA: 38' 2" (11.63mm)

Beam: 12.5

Max Draft: 2' 7" (0.79mm)

Cruise Speed: 30 Knots Kts. (35 MPH)

Max Speed: 50 Knots Kts. (58 MPH)

Our experienced yacht broker, Andrey Shestakov, will help you choose and buy a yacht that best suits your needs 2008 Chris-Craft 36 Corsair Heritage Edition — CHRIS-CRAFT from our catalogue. Presently, at Shestakov Yacht Sales Inc., we have a wide variety of yachts available on our sale's list. We also work in close contact with all the big yacht manufacturers from all over the world.

If you would like to buy a yacht 2008 Chris-Craft 36 Corsair Heritage Edition — CHRIS-CRAFT or would like help answering any questions concerning purchasing, selling or chartering a yacht, please call +1(954)274-4435

TABLE OF CONTENTS

TABLE OF CONTENTS	2
SPECIFICATIONS	3
Overview	3
Basic Information	3
Dimensions	3
Speed, Capacities and Weight	3
Accommodations	4
Hull and Deck Information	4
Engine Information	4
PHOTOS	5
CONTACTS	12
Contact details	12
Telephones	12
Office hours	12
Address	12

SPECIFICATIONS

Overview

This 36 Chris Craft Corsair 2008 is in excellent condition and only 120 hours on the original engines. Cruise in style with this head turner. You will not find a better one out there on today's market. So pick up the phone and give us a call as soon as possible. This 36 Chris-Craft Corsair 2008 looks like she came out of a time capsule from 2008. She looks as new as the day she was delivered from the factory in 2008. Never sits in the sun or water. Stored indoors. FRESH WATER ONLY STORED INDOORS IN HEATED FACILITY. MINT CONDITION. NO BOTTOM PAINT

Basic Information

Category: cruiser

Sub Category: Express

Model Year: 2008

Year Built: 2008

Country: United States

Dimensions

LOA: 38' 2" (11.63mm)

Beam: 12.5

Max Draft: 2' 7" (0.79mm)

Speed, Capacities and Weight

Cruise Speed: 30 Knots Kts. (35 MPH)

Max Speed: 50 Knots Kts. (58 MPH)

Water Capacity: 50 Gallons

Holding Tank: 29 Gal Gallons

Fuel Capacity: 286 Gal Gallons

Accommodations

Total Cabins: 2

Total Berths: 3

Total Heads: 1

Hull and Deck Information

Hull Material: Fiberglass

Engine Information

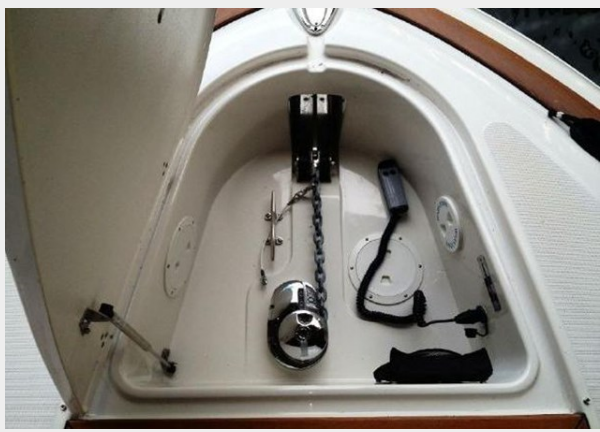
Engines: 2

Manufacturer: Volvo Penta

Engine Type: Inboard

Fuel Type: Diesel

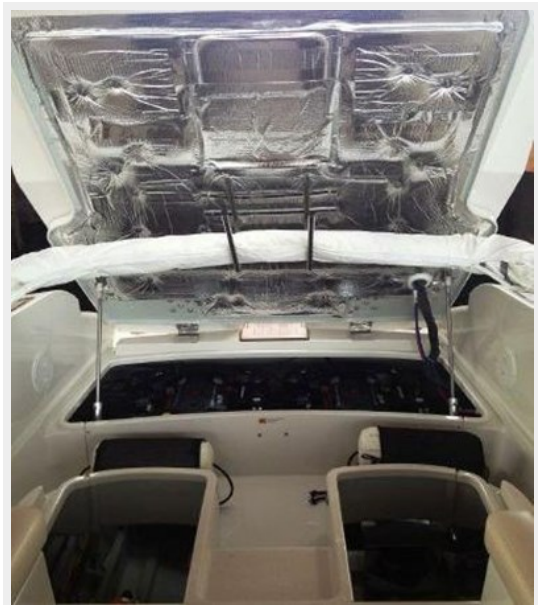
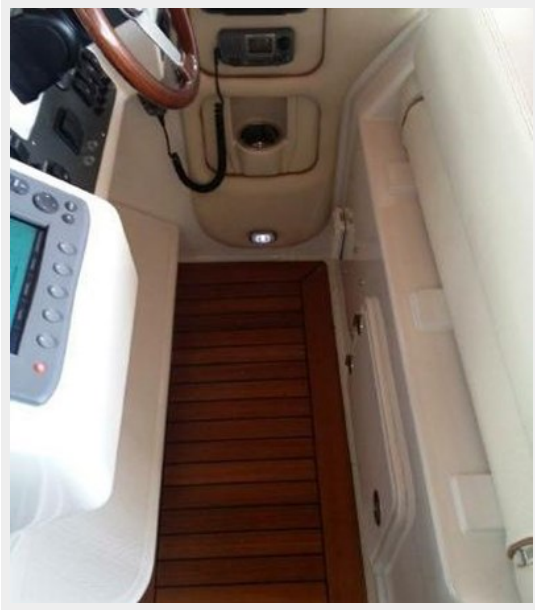
PHOTOS



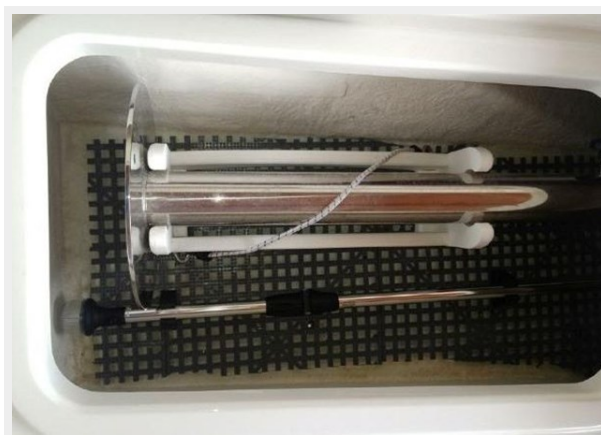












CONTACTS

Andrey Shestakov, leading yacht broker of the sales department of Shestakov Yacht Sales Inc. Shestakov Yacht Sales Inc., the official representative of the Miami/Fort Lauderdale FL headquarters.

Contact details

Email: andrey@shestakovyachtsales.com

Web: shestakovyachtsales.com/en/

Telephones

USA: +1(954)274-4435

Office hours

Monday – Saturday: **9:00 - 21:00** EDT

Sunday: **closed**

Address



Harbour Towne Marina, 850 NE 3rd St,
STE 213, Dania, FL 33004