

MOONWAKE — SEA RAY



Builder: SEA RAY

Year Built: 2014

Model: cruiser

Price: \$448,995 USD

Location: United States

LOA: 47' (14.33mm)

Beam: 14

Min Draft: 3' (0.91mm)

Max Draft: 4' (1.22mm)

Cruise Speed: 25 Knots Kts. (29 MPH)

Max Speed: 37 Knots Kts. (43 MPH)

Our experienced yacht broker, Andrey Shestakov, will help you choose and buy a yacht that best suits your needs **MoonWake — SEA RAY** from our catalogue. Presently, at Shestakov Yacht Sales Inc., we have a wide variety of yachts available on our sale's list. We also work in close contact with all the big yacht manufacturers from all over the world.

If you would like to buy a yacht **MoonWake — SEA RAY** or would like help answering any questions concerning purchasing, selling or chartering a yacht, please call **+1(954)274-4435**

TABLE OF CONTENTS

TABLE OF CONTENTS	2
SPECIFICATIONS	3
Overview	3
Basic Information	4
Dimensions	4
Speed, Capacities and Weight	4
Accommodations	4
Hull and Deck Information	5
Engine Information	5
PHOTOS	6
CONTACTS	19
Contact details	19
Telephones	19
Office hours	19
Address	19

SPECIFICATIONS

Overview

The 2014 Sea Ray 470 Sundancer, measuring 14.33m, is a cruising yacht that sets a new standard in its class through its superior craftsmanship, sleek design, and comfort features. Unveiled in 2014 by the renowned shipyard Sea Ray, a brand that needs no introduction in the yachting fraternity, this yacht promises unparalleled cruising experiences. The sleek exterior of the Sea Ray 470 Sundancer mirrors the modernity of a 21st-century yacht. Crafted predominantly in fiberglass, its hull and topsides gleam in the sun, reflecting the maritime beauty that surrounds this exquisite vessel. Its full-beam, elongated windows and a contemporary hull design showcase a blend of progressive styling and superior naval architecture. The exquisite workmanship is evident even in the smallest exterior details like the stainless-steel deck fittings and teak decking, both exuding an aura of luxury and durability. The helm area is designed for an effortless boating experience with an array of high-tech navigation and control systems. The helm and companion seat are ergonomically designed for comfort even during longer cruises. The technological features include the upgraded Raymarine electronics package with dual screens, autopilot, radar, and GPS for an accurate and smooth navigation experience. Among the key highlights is its expansive cockpit area, a remarkable feature for a yacht of this size. The cockpit is a perfect space for outdoor relaxation and entertainment, boasting a large seating area with a new optional cockpit table, a fully equipped outdoor galley with a grill, sink and fridge, and a massive sun pad for lounging or sunbathing. The interior of the 470 Sundancer offers a beautifully designed living space. The open-plan saloon offers a complete 360-degree view and is bathed in natural light from the large hull windows. It features a state-of-the-art entertainment center with a flatscreen TV, a comfortable settee, and a high-low dining table. Adjacent to the saloon, the galley is equipped with top-line appliances including a two-burner stove, microwave, full-size refrigerator, and ample storage spaces for extended cruising. The yacht comes with two spacious staterooms, each with its ensuite bathroom. The full-beam master stateroom at the back is a beautiful retreat with a queen-size berth, large hull windows, and generous storage. The forward stateroom is equally opulent, with a full-size bed, a wide closet, and a private entrance to its bathroom. The décor of the living quarters strikes a balance between elegance and comfort, with fine woodwork, premium countertops, plush carpeting, and soft lighting. Comfortable bedding, high-grade fabrics, and the use of neutral colors give the interior a sense of homely warmth, further enhanced by the availability of modern amenities like full air-conditioning, an integrated audio system, and high-speed Wi-Fi connectivity. The 2014 Sea Ray 470 Sundancer is powered by two efficient Cummins QSB 480 engines, capable of cruising at a speed up to 26 knots and reaching a top speed of 30 knots. A low engine noise level and reduced vibration enhance the onboard experience, making even high-speed cruising a tranquil journey. Moreover, the Sundancer features a hydraulic swim platform at the stern, adding to its roster of luxury amenities. It can lower into the water for easy access to the sea, serve as a launch system for a tender or jetskis and provide a superb venue for a cool-off dip in the sea or a sunset cocktail party. In conclusion, the 14.33m 2014 Sea Ray 470 Sundancer is a shining gem in the world of cruising yachts with its exceptional, user-friendly features, luxurious design, and robust performance.

Whether you're aiming for a day trip, weekend getaway, or long-term voyage, this yacht promises indulgence, comfort, and elegance of the highest degree. With the 470 Sundancer, the experience isn't just about reaching the destination; it's also about the delightful journey.

Basic Information

Category: cruiser

Model Year: 2014

Year Built: 2014

Country: United States

Dimensions

LOA: 47' (14.33mm)

Beam: 14

Min Draft: 3' (0.91mm)

Max Draft: 4' (1.22mm)

Speed, Capacities and Weight

Cruise Speed: 25 Knots Kts. (29 MPH)

Cruise Speed Range: 250

Max Speed: 37 Knots Kts. (43 MPH)

Max Speed Range: 180 Kts.

Gross Tonnage: 30000 Pounds

Water Capacity: 100 Gallons

Holding Tank: 42 Gal Gallons

Fuel Capacity: 350 Gal Gallons

Accommodations

Total Cabins: 2

Total Berths: 2

Sleeps: 4

Total Heads: 2

Hull and Deck Information

Hull Material: Fiberglass

Deck Material: Fiberglass

Hull Configuration: Monohull

Hull Designer: Sea Ray

Interior Designer: Sea Ray

Engine Information

Engines: 2

Manufacturer: Cummins

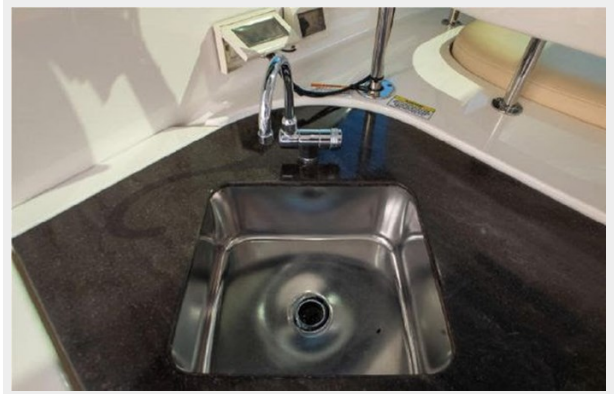
Engine Type: Inboard

Fuel Type: Diesel

PHOTOS



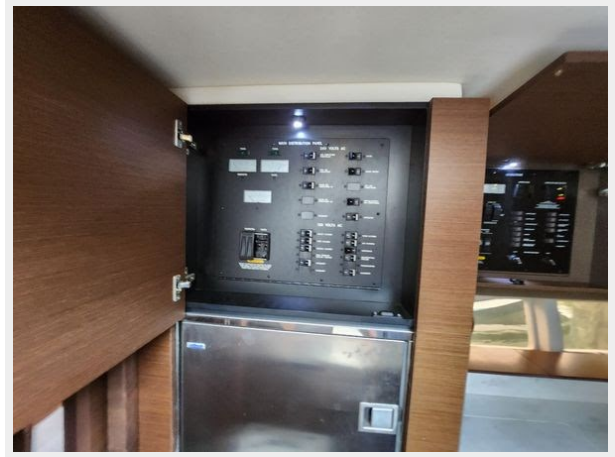




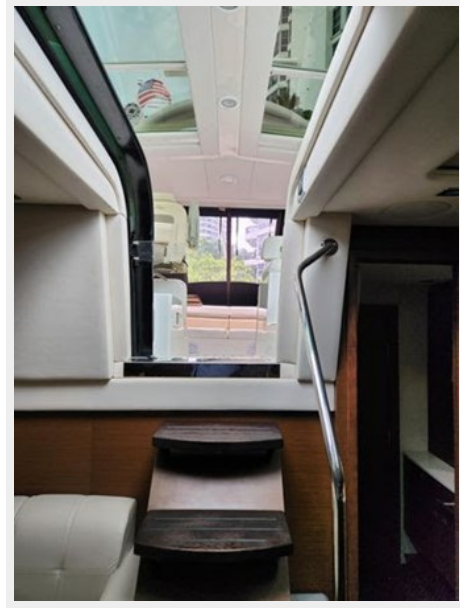


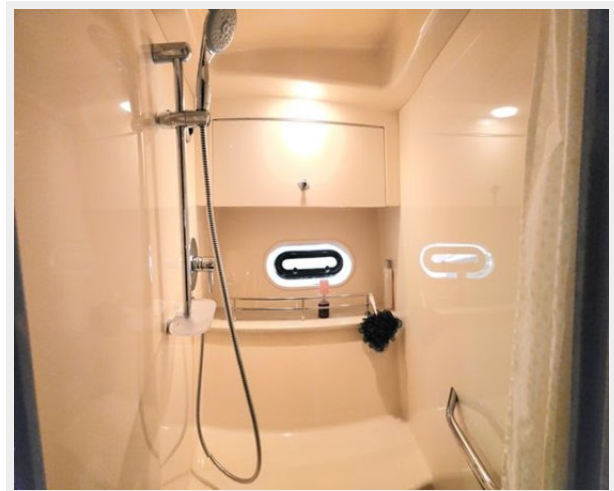
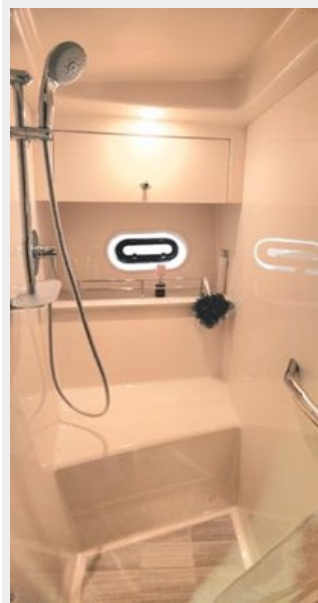
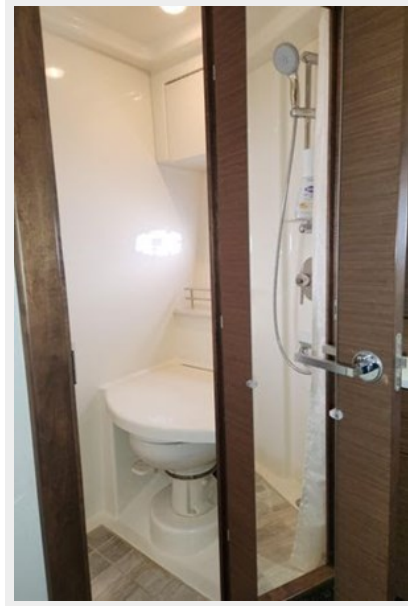






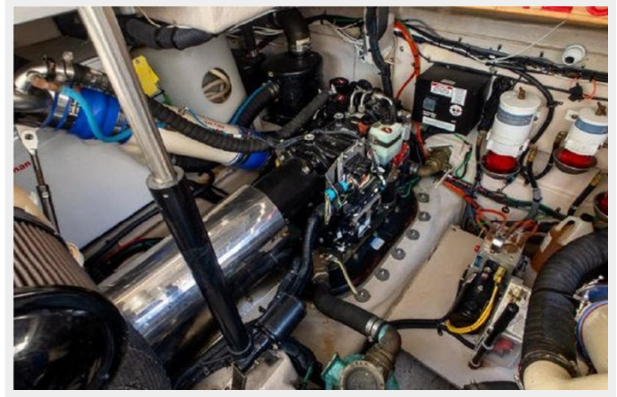












CONTACTS

Andrey Shestakov, leading yacht broker of the sales department of Shestakov Yacht Sales Inc. Shestakov Yacht Sales Inc., the official representative of the Miami/Fort Lauderdale FL headquarters.

Contact details

Email: andrey@shestakovyachtsales.com

Web: shestakovyachtsales.com/en/

Telephones

USA: +1(954)274-4435

Office hours

Monday – Saturday: **9:00 - 21:00** EDT

Sunday: **closed**

Address



Harbour Towne Marina, 850 NE 3rd St,
STE 213, Dania, FL 33004