

ANCHOR ISLAND — SEA RAY



Builder: SEA RAY

Year Built: 2006

Model: Aft Cabin

Price: PRICE ON APPLICATION

Location: United States

LOA: 40' (12.19m)

Beam: 14.25

Max Draft: 3' (0.91m)

Our experienced yacht broker, Andrey Shestakov, will help you choose and buy a yacht that best suits your needs **Anchor Island — SEA RAY** from our catalogue. Presently, at Shestakov Yacht Sales Inc., we have a wide variety of yachts available on our sale's list. We also work in close contact with all the big yacht manufacturers from all over the world.

If you would like to buy a yacht **Anchor Island — SEA RAY** or would like help answering any questions concerning purchasing, selling or chartering a yacht, please call **+1(954)274-4435**

TABLE OF CONTENTS

TABLE OF CONTENTS	2
SPECIFICATIONS	5
Overview	5
Basic Information	5
Dimensions	5
Speed, Capacities and Weight	6
Accommodations	6
Hull and Deck Information	6
Engine Information	6
PHOTOS	7
123336_0_070320091903_2	7
9090322_20231019064921904_1_XLARGE	7
9090322_20231019064916441_1_XLARGE	7
9090322_20231019064915465_1_XLARGE	7
9090322_20231019064914433_1_XLARGE	8
9090322_20231019064913412_1_XLARGE	8
9090322_20231019064923663_1_XLARGE	8
9090322_20231019064919556_1_XLARGE	8
9090322_20231019064926321_1_XLARGE	8
9090322_20231019064933757_1_XLARGE	8
9090322_20231019064927365_1_XLARGE	9
9090322_20231019064928346_1_XLARGE	9
9090322_20231019064932782_1_XLARGE	9
9090322_20231019065018921_1_XLARGE	9
9090322_20231019064936679_1_XLARGE	9
9090322_20231019064937693_1_XLARGE	9
9090322_20231019064938692_1_XLARGE	10
9090322_20231019064939712_1_XLARGE	10

9090322_20231019064941785_1_XLARGE	10
9090322_20231019064940760_1_XLARGE	10
9090322_20231019064944760_1_XLARGE	10
9090322_20231019064943754_1_XLARGE	10
9090322_20231019064942717_1_XLARGE	11
9090322_20231019064929719_1_XLARGE	11
9090322_20231019064931743_1_XLARGE	11
9090322_20231019064934446_1_XLARGE	11
9090322_20231019064935456_1_XLARGE	11
9090322_20231019064951930_1_XLARGE	11
9090322_20231019064945758_1_XLARGE	12
9090322_20231019064946579_1_XLARGE	12
9090322_20231019064948591_1_XLARGE	12
9090322_20231019064947569_1_XLARGE	12
9090322_20231019064949829_1_XLARGE	12
9090322_20231019064955865_1_XLARGE	12
9090322_20231019064953947_1_XLARGE	13
9090322_20231019064954841_1_XLARGE	13
9090322_20231019064952968_1_XLARGE	13
9090322_20231019064956914_1_XLARGE	13
9090322_20231019064957913_1_XLARGE	13
9090322_20231019065000035_1_XLARGE	13
9090322_20231019065002958_1_XLARGE	14
9090322_20231019065002019_1_XLARGE	14
9090322_20231019065001079_1_XLARGE	14
9090322_20231019065017910_1_XLARGE	14
9090322_20231019064950852_1_XLARGE	14
9090322_20231019065004109_1_XLARGE	14
9090322_20231019065006179_1_XLARGE	15

9090322_20231019065008150_1_XLARGE	15
9090322_20231019065017112_1_XLARGE	15
9090322_20231019065009161_1_XLARGE	15
9090322_20231019065015092_1_XLARGE	15
9090322_20231019065011013_1_XLARGE	15
9090322_20231019065012029_1_XLARGE	16
9090322_20231019065012853_1_XLARGE	16
9090322_20231019065013867_1_XLARGE	16
CONTACTS	17
Contact details	17
Telephones	17
Office hours	17
Address	17

SPECIFICATIONS

Overview

"ANCHOR ISLAND"

is a prime example of the popular Sea Ray 40 motor yacht. Always meticulously maintained buy a knowledgeable owner and kept in pristine condition. Whether you plan to simply live aboard, coastal cruise, do the "loop" or enjoy the Bahamas this boat is ideal. Her Cummins B series engines are very thrifty on fuel. The included remote Yacht Controller makes docking a breeze. Engines have been serviced recently, including new air charge coolers.

Some highlights: Yacht Controller, bow thruster, newer aft enclosure, New Batteries (10/2023), St Croix davits, RIB inflatable with Mercury 9.9 engine.

Exterior photos coming soon!

COME SEE THIS BOAT!

You'll be happy you did.

An added bonus!!!

This boat is located in Riviera Dunes Marina in Palmetto. The slip is available for purchase or possibly a long term rental. Riviera Dunes Marina is considered by many to be the best marina and hurricane hole on the Florida West coast.

Basic Information

Category: Aft Cabin

Sub Category: Aft Cabin

Model Year: 2006

Year Built: 2006

Country: United States

Dimensions

LOA: 40' (12.19mm)

Beam: 14.25

Max Draft: 3' (0.91mm)

Speed, Capacities and Weight

Water Capacity: 100 Gallons

Holding Tank: 54 Gal Gallons

Fuel Capacity: 300 Gal Gallons

Accommodations

Total Cabins: 2

Hull and Deck Information

Hull Material: Fiberglass

Engine Information

Engines: 2

Manufacturer: Cummins

Engine Type: Inboard

Fuel Type: Diesel

PHOTOS

123336_0_070320091903_2



9090322_20231019064921904_1_XLARGE



9090322_20231019064916441_1_XLARGE



9090322_20231019064915465_1_XLARGE



9090322_20231019064914433_1_XLARGE



9090322_20231019064913412_1_XLARGE



9090322_20231019064923663_1_XLARGE



9090322_20231019064919556_1_XLARGE



9090322_20231019064926321_1_XLARGE



9090322_20231019064933757_1_XLARGE



9090322_20231019064927365_1_XLARGE



9090322_20231019064928346_1_XLARGE



9090322_20231019064932782_1_XLARGE



9090322_20231019065018921_1_XLARGE



9090322_20231019064936679_1_XLARGE



9090322_20231019064937693_1_XLARGE



9090322_20231019064938692_1_XLARGE



9090322_20231019064939712_1_XLARGE



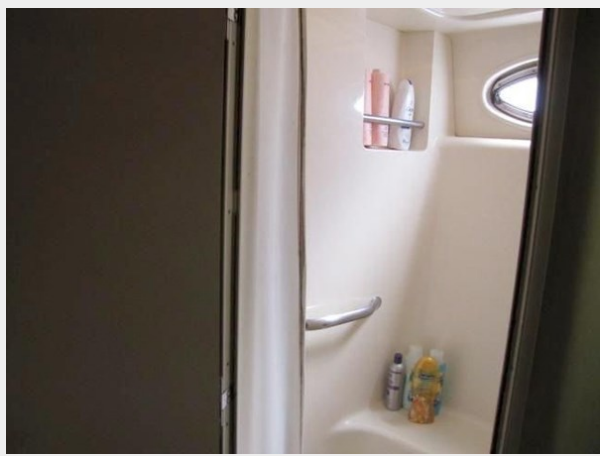
9090322_20231019064941785_1_XLARGE



9090322_20231019064940760_1_XLARGE



9090322_20231019064944760_1_XLARGE



9090322_20231019064943754_1_XLARGE



9090322_20231019064942717_1_XLARGE



9090322_20231019064929719_1_XLARGE



9090322_20231019064931743_1_XLARGE



9090322_20231019064934446_1_XLARGE



9090322_20231019064935456_1_XLARGE



9090322_20231019064951930_1_XLARGE



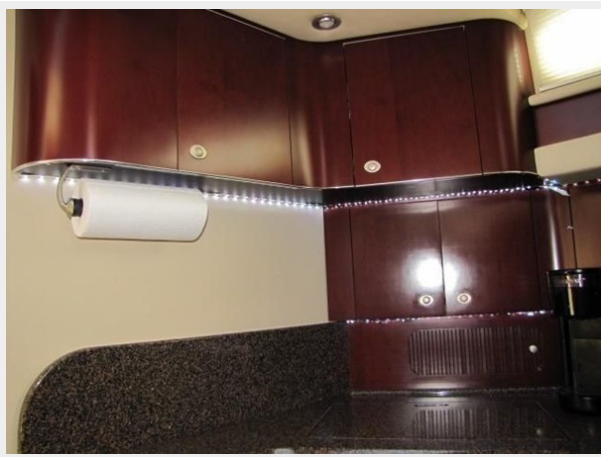
9090322_20231019064945758_1_XLARGE



9090322_20231019064946579_1_XLARGE



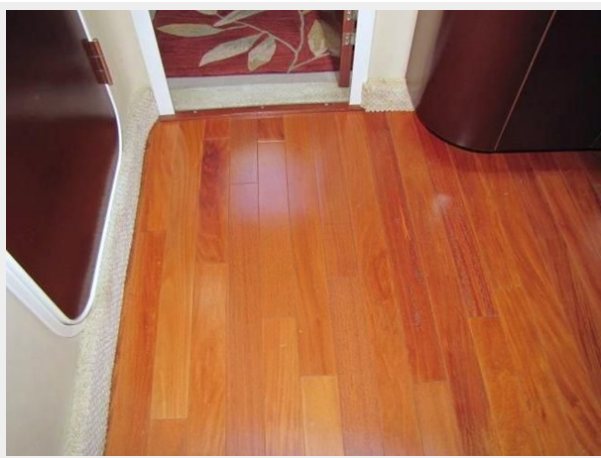
9090322_20231019064948591_1_XLARGE



9090322_20231019064947569_1_XLARGE



9090322_20231019064949829_1_XLARGE



9090322_20231019064955865_1_XLARGE



9090322_20231019064953947_1_XLARGE



9090322_20231019064954841_1_XLARGE



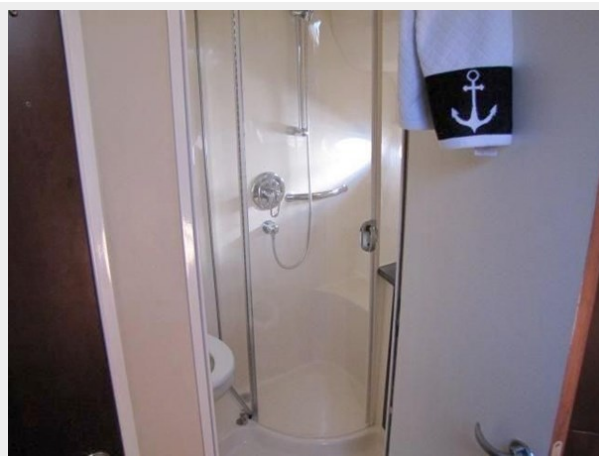
9090322_20231019064952968_1_XLARGE



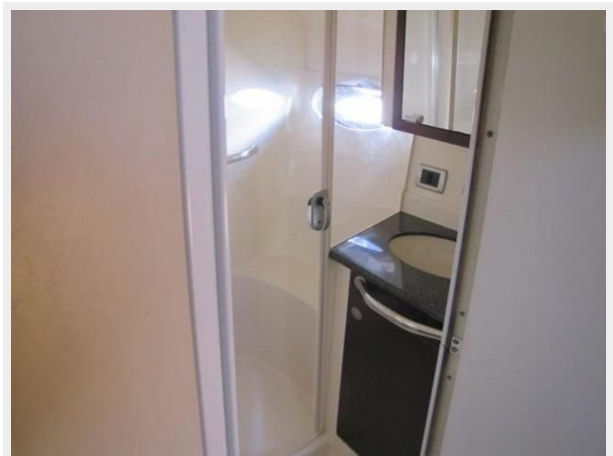
9090322_20231019064956914_1_XLARGE



9090322_20231019064957913_1_XLARGE



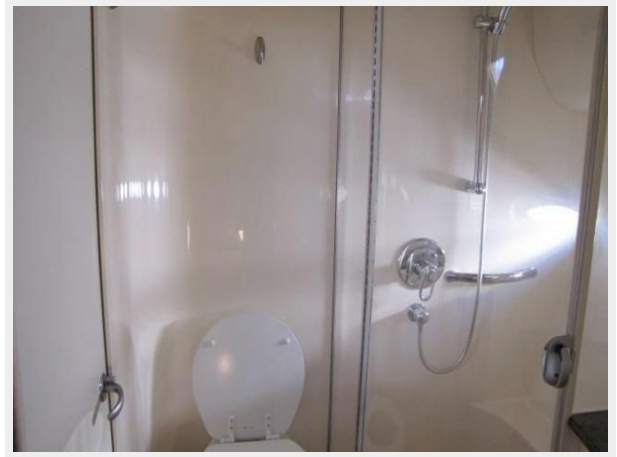
9090322_20231019065000035_1_XLARGE



9090322_20231019065002958_1_XLARGE



9090322_20231019065002019_1_XLARGE



9090322_20231019065001079_1_XLARGE



9090322_20231019065017910_1_XLARGE



9090322_20231019064950852_1_XLARGE



9090322_20231019065004109_1_XLARGE



9090322_20231019065006179_1_XLARGE



9090322_20231019065008150_1_XLARGE



9090322_20231019065017112_1_XLARGE



9090322_20231019065009161_1_XLARGE



9090322_20231019065015092_1_XLARGE



9090322_20231019065011013_1_XLARGE



9090322_20231019065012029_1_XLARGE



9090322_20231019065012853_1_XLARGE



9090322_20231019065013867_1_XLARGE



CONTACTS

Andrey Shestakov, leading yacht broker of the sales department of Shestakov Yacht Sales Inc. Shestakov Yacht Sales Inc., the official representative of the Miami/Fort Lauderdale FL headquarters.

Contact details

Email: andrey@shestakovyachtsales.com

Web: shestakovyachtsales.com/en/

Telephones

USA: +1(954)274-4435

Office hours

Monday – Saturday: **9:00 - 21:00** EDT

Sunday: **closed**

Address



Harbour Towne Marina, 850 NE 3rd St,
STE 213, Dania, FL 33004