

FRANKLIE — ROSSI NAVI



Builder: ROSSI NAVI

Year Built: 2024

Model: high performance

Price: PRICE ON APPLICATION

Location: Italy

LOA: 160' 9" (49mm)

Beam: 29.16

Min Draft: 7' 2" (2.18mm)

Max Draft: 7' 6" (2.29mm)

Cruise Speed: 26 Knots Kts. (30 MPH)

Max Speed: 31 Knots Kts. (36 MPH)

Our experienced yacht broker, Andrey Shestakov, will help you choose and buy a yacht that best suits your needs **FRANKLIE — ROSSI NAVI** from our catalogue. Presently, at Shestakov Yacht Sales Inc., we have a wide variety of yachts available on our sale's list. We also work in close contact with all the big yacht manufacturers from all over the world.

If you would like to buy a yacht **FRANKLIE — ROSSI NAVI** or would like help answering any questions concerning purchasing, selling or chartering a yacht, please call **+1(954)274-4435**

TABLE OF CONTENTS

TABLE OF CONTENTS	2
SPECIFICATIONS	4
Overview	4
Basic Information	4
Dimensions	4
Speed, Capacities and Weight	4
Accommodations	5
Hull and Deck Information	5
Engine Information	5
PHOTOS	6
AFT COCKPIT	6
BOW PROFILE	6
BOW SEATING	6
UPPER DECK POOL	6
STERN	6
MAIN SALON AFT	6
MAIN SALON	7
MAIN SALON TV	7
PANTRY_UD_1	7
PANTRY_UD_2	7
OWNERS LOUNGE	7
MASTER_BATH_1_NIGHT	7
MASTER_BATH_1_DAY	8
MASTER_BATH_2_NIGHT	8
MASTER_BATH_2_DAY	8
MASTER_BEDROOM_1_DAY	8
MASTER_BEDROOM_1_NIGHT	8
MASTER_BEDROOM_2_DAY	8

MASTER_BEDROOM_2_NIGHT	8
MASTER_BEDROOM_3_DAY	8
GYM	9
MASTER_BEDROOM_3_NIGHT	9
GUEST_CABIN_1	9
GUEST_CABIN_2	9
GUEST_CABIN_3	9
GUEST_CABIN_4	9
GUEST_HEAD_1	10
GUEST_HEAD_2	10
GUEST_HEAD_3	10
SKYLOUNGE_THEATER_1	10
SKYLOUNGE-THEATER-2	10
SKYLOUNGE_THEATER_3	10
CONTACTS	11
Contact details	11
Telephones	11
Office hours	11
Address	11

SPECIFICATIONS

Overview

Prepare to be amazed by this one of a kind 49m sport yacht built by world renowned Italian shipyard Rossinavi. With the exterior design penciled by Fulvio Di Simoni this fast displacement yacht looks fast sitting still but will prove to be full of adrenaline at speeds of over 30knots while underway.

The free flowing minimalistic design is done in such a way to make this yacht feel like an extension of your home. Many costly details will go unnoticed but will add to the feeling you will enjoy throughout the yacht's spaces. Having performance in mind throughout construction every material specified was methodically tested against the weight ratios allowing this 160 foot yacht to glide along the sea at an astonishing 30+ knots.

Let's discover this yacht together to give you the full perspective of what will touch the water in beginning of 2024 and be yours to enjoy starting this up coming 2024 summer yachting season.

Basic Information

Category: high performance

Sub Category: High Performance

Model Year: 2024

Year Built: 2024

Country: Italy

Dimensions

LOA: 160' 9" (49mm)

Beam: 29.16

Min Draft: 7' 2" (2.18mm)

Max Draft: 7' 6" (2.29mm)

Speed, Capacities and Weight

Cruise Speed: 26 Knots Kts. (30 MPH)

Max Speed: 31 Knots Kts. (36 MPH)

Gross Tonnage: 499 Pounds

Accommodations

Total Cabins: 3

Total Berths: 3

Sleeps: 6

Total Heads: 6

Crew Cabin: 7

Crew Berths: 7

Crew Heads: 4

Hull and Deck Information

Hull Material: Aluminum

Deck Material: Teak over Aluminum

Hull Configuration: Fast Displacement Hull

Hull Color: White

Hull Designer: Studio ARRABITO

Exterior Designer: Fulvio De Simone

Engine Information

Engines: 4

Manufacturer: MTU

Engine Type: Inboard

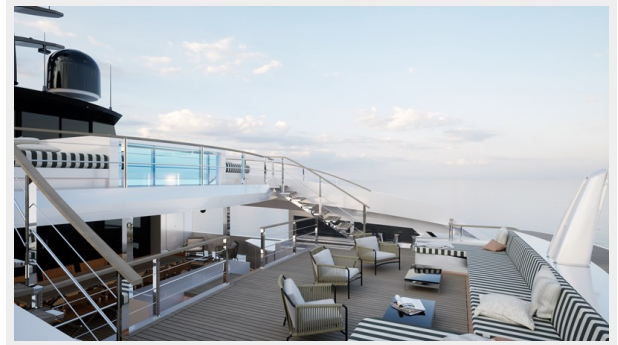
Fuel Type: Diesel

PHOTOS

BOW PROFILE



AFT COCKPIT



BOW SEATING



UPPER DECK POOL



STERN



MAIN SALON AFT



MAIN SALON



MAIN SALON TV



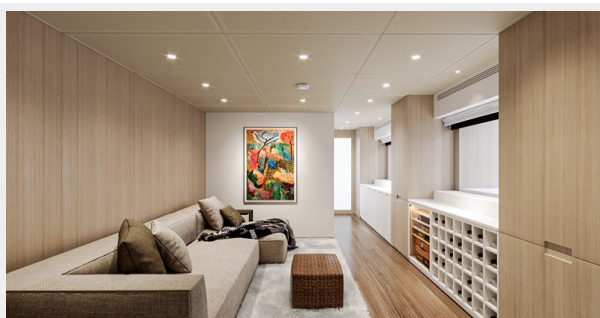
PANTRY_UD_1



PANTRY_UD_2



OWNERS LOUNGE



MASTER_BATH_1_NIGHT



MASTER_BATH_1_DAY



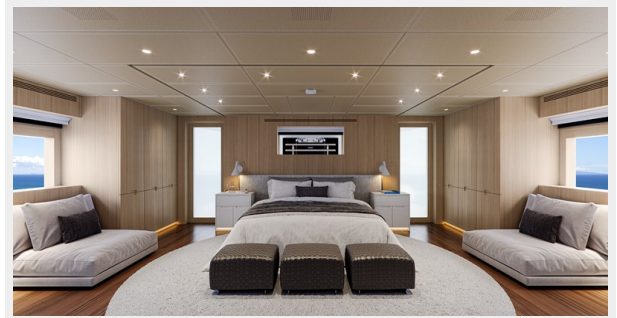
MASTER_BATH_2_NIGHT



MASTER_BATH_2_DAY



MASTER_BEDROOM_1_DAY



MASTER_BEDROOM_1_NIGHT



MASTER_BEDROOM_2_DAY



MASTER_BEDROOM_2_NIGHT



MASTER_BEDROOM_3_DAY



MASTER_BEDROOM_3_NIGHT



GYM



GUEST_CABIN_1



GUEST_CABIN_2



GUEST_CABIN_3



GUEST_CABIN_4



GUEST_HEAD_1



GUEST_HEAD_2



GUEST_HEAD_3



SKYLOUNGE_THEATER_1



SKYLOUNGE-THEATER-2



SKYLOUNGE_THEATER_3



CONTACTS

Andrey Shestakov, leading yacht broker of the sales department of Shestakov Yacht Sales Inc. Shestakov Yacht Sales Inc., the official representative of the Miami/Fort Lauderdale FL headquarters.

Contact details

Email: andrey@shestakovyachtsales.com

Web: shestakovyachtsales.com/en/

Telephones

USA: +1(954)274-4435

Office hours

Monday – Saturday: **9:00 - 21:00** EDT

Sunday: **closed**

Address



Harbour Towne Marina, 850 NE 3rd St,
STE 213, Dania, FL 33004