

PRODIGI — SEA RAY



Builder: [SEA RAY](#)

Year Built: 2017

Model: cruiser

Price: \$895,000 USD

Location: United States

LOA: 51' (15.54mm)

Beam: 15.42

Min Draft: 4' 10" (1.47mm)

Max Draft: 4' 10" (1.47mm)

Cruise Speed: 25 Knots Kts. (29 MPH)

Max Speed: 30 Knots Kts. (35 MPH)

Our experienced yacht broker, Andrey Shestakov, will help you choose and buy a yacht that best suits your needs **Prodigi — SEA RAY** from our catalogue. Presently, at Shestakov Yacht Sales Inc., we have a wide variety of yachts available on our sale's list. We also work in close contact with all the big yacht manufacturers from all over the world.

If you would like to buy a yacht **Prodigi — SEA RAY** or would like help answering any questions concerning purchasing, selling or chartering a yacht, please call **+1(954)274-4435**

TABLE OF CONTENTS

TABLE OF CONTENTS	2
SPECIFICATIONS	6
Overview	6
Basic Information	6
Dimensions	6
Speed, Capacities and Weight	6
Accommodations	7
Hull and Deck Information	7
Engine Information	7
PHOTOS	8
2	8
3	8
4	8
5	8
6	8
7	8
8	9
9	9
10	9
11	9
13	10
12	10
14	10
15	10
17	10
16	10
19	11
18	11

20	11
21	11
23	12
22	12
24	12
25	12
26	12
27	12
28	13
29	13
30	13
31	13
32	13
33	13
34	14
35	14
36	14
37	14
38	14
39	14
40	15
41	15
42	15
43	15
44	15
45	15
46	16
47	16
48	16

49	16
50	16
51	16
52	17
53	17
54	17
55	17
56	17
57	17
58	18
59	18
61	18
60	18
62	18
63	18
65	19
64	19
67	19
66	19
68	20
69	20
71	20
70	20
72	21
73	21
CONTACTS	22
Contact details	22
Telephones	22
Office hours	22

Address

22

SPECIFICATIONS

Overview

Price Improvement - Don't Miss this Boat - Huge Opportunity!

Impeccably maintained 2017 Sea Ray 510 Fly Extended Hardtop loaded with upgrades! Just fully detailed, Turn Key Ready. This 2017 Sea Ray 510 Fly is a boater's dream. With 268 Hours on Her Twin Zeus 600 QSC Engines. Outstanding Condition Inside and Out- A True Must See to Appreciate! Extended Hardtop Includes Full Enclosure Newly Installed (\$58,000 Option) The 2021 Sea-Doo SPARK TRIXX Jet Ski with 4 hours - "COULD BE" included Call for details

Basic Information

Category: cruiser

Model Year: 2017

Year Built: 2017

Country: United States

Dimensions

LOA: 51' (15.54mm)

Beam: 15.42

Min Draft: 4' 10" (1.47mm)

Max Draft: 4' 10" (1.47mm)

Speed, Capacities and Weight

Cruise Speed: 25 Knots Kts. (29 MPH)

Cruise Speed Range: 212

Max Speed: 30 Knots Kts. (35 MPH)

Max Speed Range: 180 Kts.

Gross Tonnage: 44 Pounds

Water Capacity: 130 Gallons

Holding Tank: 68 Gal Gallons

Fuel Capacity: 500 Gal Gallons

Accommodations

Total Cabins: 3

Total Berths: 5

Sleeps: 6

Total Heads: 2

Crew Cabin: 2

Crew Berths: 2

Crew Heads: 1

Hull and Deck Information

Hull Material: Fiberglass

Deck Material: Fiberglass

Hull Configuration: Modified V-Hull

Hull Designer: Sea Ray

Interior Designer: Sea Ray

Engine Information

Engines: 2

Manufacturer: Cummins

Engine Type: Inboard

Fuel Type: Diesel

PHOTOS

2



3



4



5



6



7



8



9



10



11



12



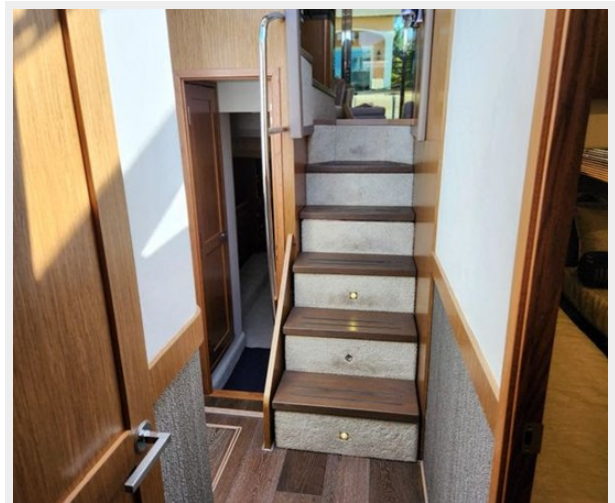
13



14



15



16



17



18



19



20



21



22



23



24



25



26



27



28



29



30



31



32



33



34



35



36



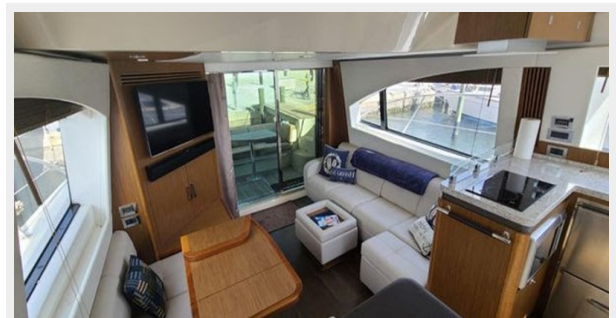
37



38



39



40



41



42



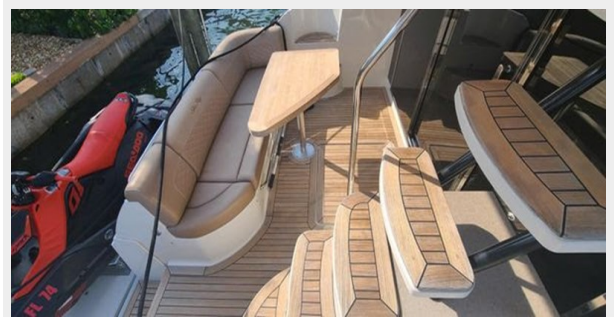
43



44



45



46



47



48



49



50



51



52



53



54



55



56



57



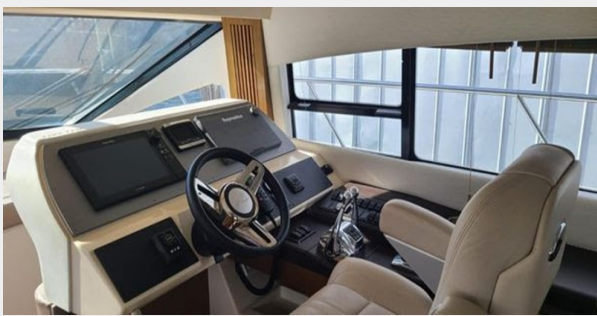
58



59



60



61



62



63



64



65



66



67



68



69



70



71



72



73



CONTACTS

Andrey Shestakov, leading yacht broker of the sales department of Shestakov Yacht Sales Inc. Shestakov Yacht Sales Inc., the official representative of the Miami/Fort Lauderdale FL headquarters.

Contact details

Email: andrey@shestakovyachtsales.com

Web: shestakovyachtsales.com/en/

Telephones

USA: +1(954)274-4435

Office hours

Monday – Saturday: **9:00 - 21:00** EDT

Sunday: **closed**

Address



Harbour Towne Marina, 850 NE 3rd St,
STE 213, Dania, FL 33004