

MISS PEGGY SUE LL — VIKING



Builder: VIKING

Year Built: 2018

Model: Sport Fisherman

Price: PRICE ON APPLICATION

Location: United States

LOA: 45' 1" (13.74mm)

Beam: 16.4

Min Draft: 3' 6" (1.07mm)

Max Draft: 6' (1.83mm)

Cruise Speed: 30 Knots Kts. (35 MPH)

Max Speed: 35 Knots Kts. (40 MPH)

Our experienced yacht broker, Andrey Shestakov, will help you choose and buy a yacht that best suits your needs **MISS PEGGY SUE II — VIKING** from our catalogue. Presently, at Shestakov Yacht Sales Inc., we have a wide variety of yachts available on our sale's list. We also work in close contact with all the big yacht manufacturers from all over the world.

If you would like to buy a yacht **MISS PEGGY SUE II — VIKING** or would like help answering any questions concerning purchasing, selling or chartering a yacht, please call **+1(954)274-4435**

TABLE OF CONTENTS

TABLE OF CONTENTS	2
SPECIFICATIONS	3
Overview	3
Basic Information	3
Dimensions	3
Speed, Capacities and Weight	3
Accommodations	3
Hull and Deck Information	4
Engine Information	4
PHOTOS	5
5	5
19	9
35	13
46	16
50	16
59	18
61	18
CONTACTS	19
Contact details	19
Telephones	19
Office hours	19
Address	19

SPECIFICATIONS

Overview

MOTIVATED SELLER!!!

With the 44 Open, the New Jersey powerhouse delivers a fishing-and-cruising gem that has the soft, stable performance and interior comfort and accommodations of a much larger boat.

Basic Information

Category: Sport Fisherman

Model Year: 2018

Year Built: 2018

Country: United States

Dimensions

LOA: 45' 1" (13.74mm)

Beam: 16.4

Min Draft: 3' 6" (1.07mm)

Max Draft: 6' (1.83mm)

Speed, Capacities and Weight

Cruise Speed: 30 Knots Kts. (35 MPH)

Cruise Speed Range: 310

Max Speed: 35 Knots Kts. (40 MPH)

Max Speed Range: 275 Kts.

Gross Tonnage: 15 Pounds

Water Capacity: 120 Gallons

Holding Tank: 39 Gal Gallons

Fuel Capacity: 845 Gal Gallons

Accommodations

Total Cabins: 2

Total Berths: 4

Sleeps: 4

Total Heads: 2

Hull and Deck Information

Hull Material: Fiberglass

Deck Material: Composite

Hull Configuration: Monohull

Hull Designer: Viking Yachts

Interior Designer: Viking Yachts

Engine Information

Engines: 2

Manufacturer: Cummins

Engine Type: Inboard

Fuel Type: Diesel

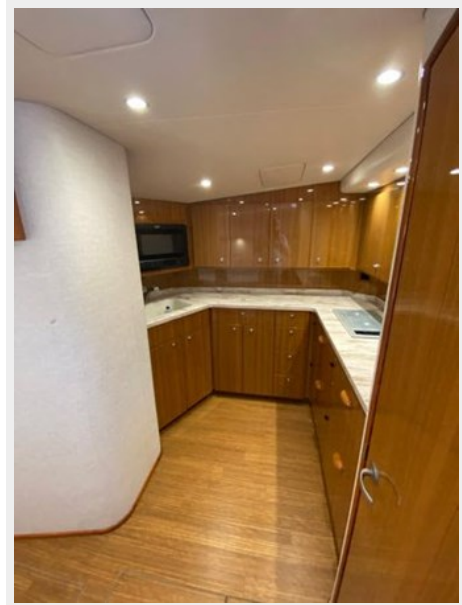
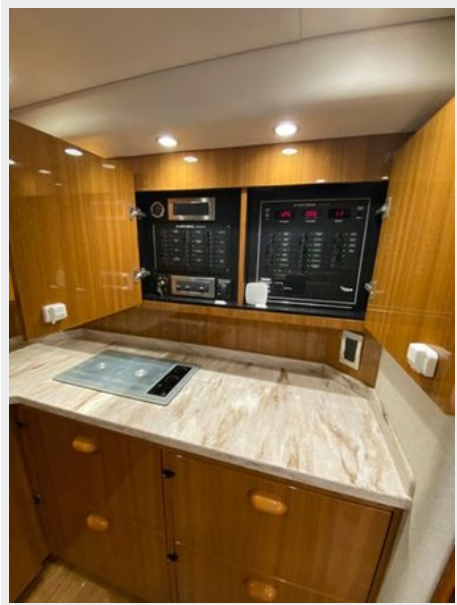
PHOTOS

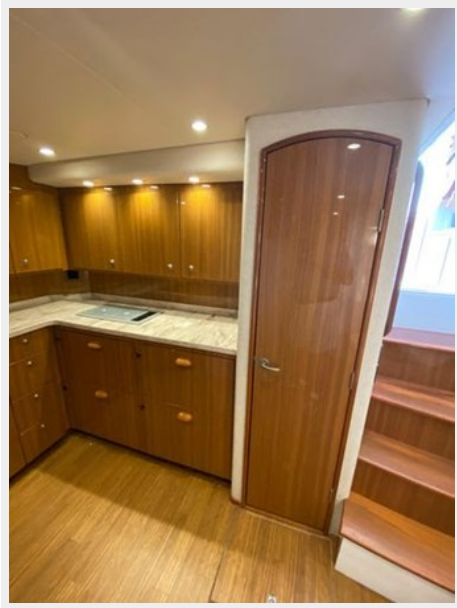


5

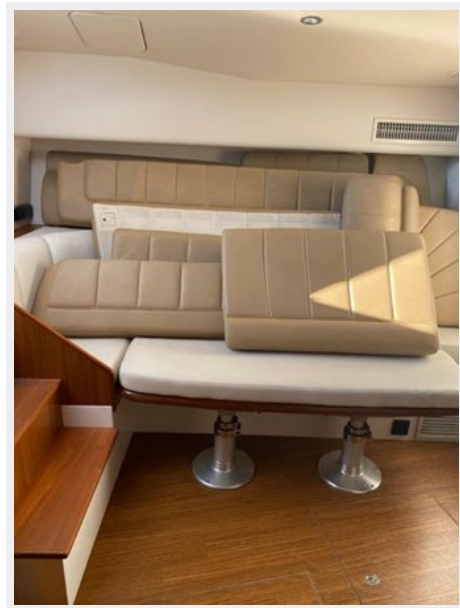
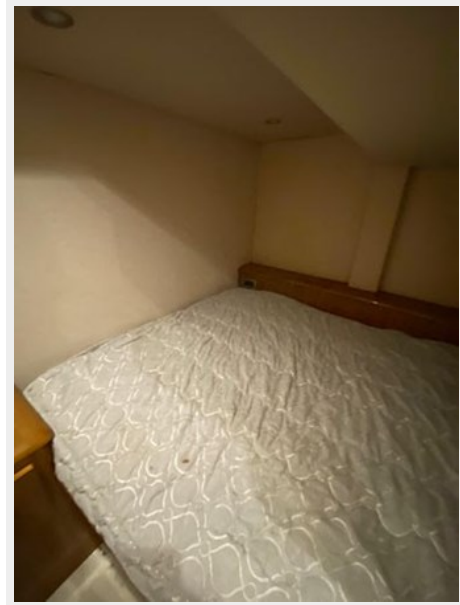


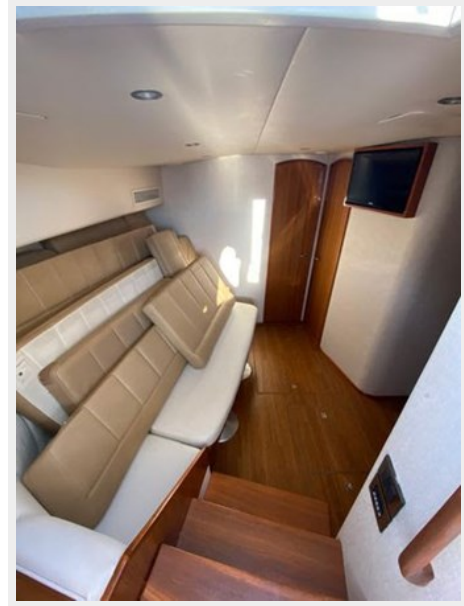




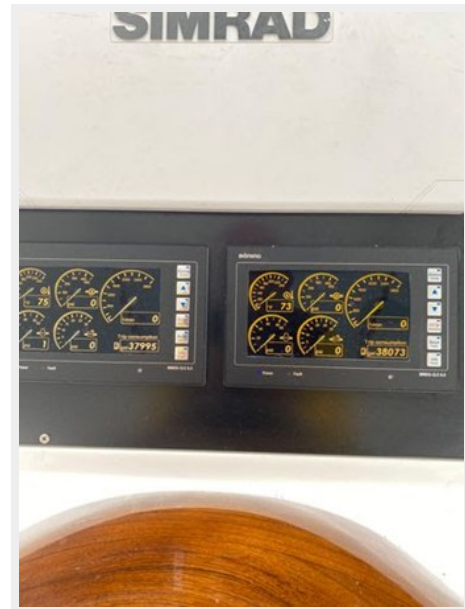
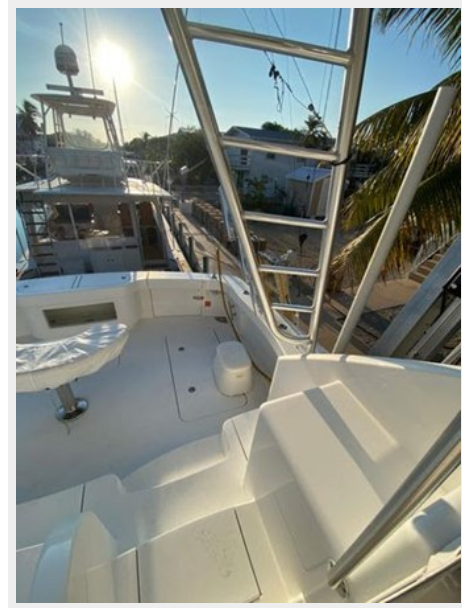


19

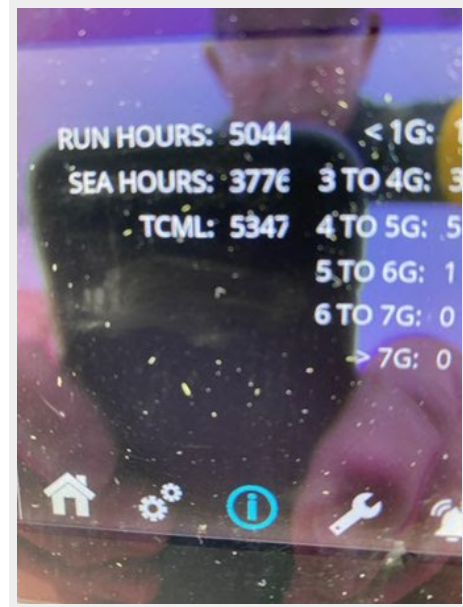


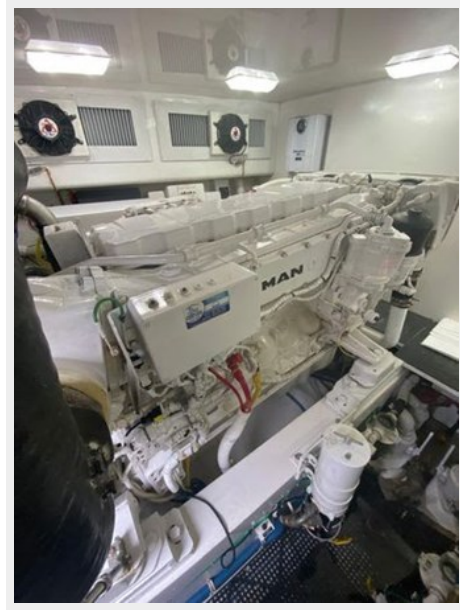


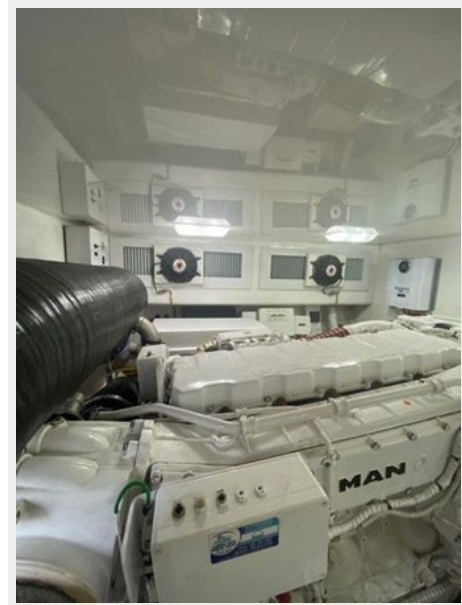




35







46



50





59



61



CONTACTS

Andrey Shestakov, leading yacht broker of the sales department of Shestakov Yacht Sales Inc. Shestakov Yacht Sales Inc., the official representative of the Miami/Fort Lauderdale FL headquarters.

Contact details

Email: andrey@shestakovyachtsales.com

Web: shestakovyachtsales.com/en/

Telephones

USA: +1(954)274-4435

Office hours

Monday – Saturday: **9:00 - 21:00** EDT

Sunday: **closed**

Address



Harbour Towne Marina, 850 NE 3rd St,
STE 213, Dania, FL 33004