

HELGA — VAN DER VALK



Builder: VAN DER VALK

Year Built: 2021

Model: Raised Pilothouse

Price: €6,900,000 EUR

Location: Montenegro

LOA: 89' 7" (27.3mm)

Beam: 20.5

Max Draft: 5' 11" (1.8mm)

Cruise Speed: 23 Knots Kts. (26 MPH)

Max Speed: 27 Knots Kts. (31 MPH)

Our experienced yacht broker, Andrey Shestakov, will help you choose and buy a yacht that best suits your needs **HELGA — VAN DER VALK** from our catalogue. Presently, at Shestakov Yacht Sales Inc., we have a wide variety of yachts available on our sale's list. We also work in close contact with all the big yacht manufacturers from all over the world.

If you would like to buy a yacht **HELGA — VAN DER VALK** or would like help answering any questions concerning purchasing, selling or chartering a yacht, please call **+1(954)274-4435**

TABLE OF CONTENTS

TABLE OF CONTENTS	2
SPECIFICATIONS	4
Overview	4
Basic Information	4
Dimensions	4
Speed, Capacities and Weight	4
Accommodations	4
Hull and Deck Information	4
Engine Information	5
PHOTOS	6
VAN_DER_VALK_Raised_Pilothouse_Helga_exterior_04	6
VAN_DER_VALK_Raised_Pilothouse_Helga_exterior_03	6
6095d01_13418	6
6095d01_13545	6
6095d01_13607	6
6095d01_13615	6
6095d01_13633	6
6095d01_13623	6
6095d01_13643	7
6095d01_13651	7
6095d01_13654	7
6095d01_13660	7
6095d01_13667	7
6095d01_13671	7
6095d01_13691	8
6095d01_13687	8
CONTACTS	9
Contact details	9

Telephones	9
Office hours	9
Address	9

SPECIFICATIONS

Overview

The 27.3m Helga, built by Van der Valk in 2021, is in like-new condition and boasts extensive custom specifications, only two seasons of private low use, gyroscopic stabilizing system, hydraulic swimming platform, floor heating throughout the yacht, heating in main aft ceiling and many other features making her unique in the range. Walkthrough video can be provided upon request.

Basic Information

Category: Raised Pilothouse

Sub Category: Raised Pilothouse

Model Year: 2021

Year Built: 2021

Country: Montenegro

Dimensions

LOA: 89' 7" (27.3mm)

Beam: 20.5

Max Draft: 5' 11" (1.8mm)

Speed, Capacities and Weight

Cruise Speed: 23 Knots Kts. (26 MPH)

Max Speed: 27 Knots Kts. (31 MPH)

Gross Tonnage: 129 Pounds

Water Capacity: 1900 Gallons

Holding Tank: 528.34 Gal Gallons

Fuel Capacity: 2245.46 Gal Gallons

Accommodations

Total Cabins: 4

Sleeps: 8

Hull and Deck Information

Hull Material: Aluminum

Deck Material: Teak

Hull Configuration: Modified V-Hull

Hull Color: RAL 5024

Exterior Designer: Guido de Groot Design

Interior Designer: Guido de Groot Design

Engine Information

Engines: 2

Manufacturer: MTU

Fuel Type: Diesel

PHOTOS

VAN_DER_VALK_Raised_Pilothouse_Helga_exterior_03 VAN_DER_VALK_Raised_Pilothouse_Helga_exterior_04



6095d01_13418



6095d01_13545



6095d01_13607



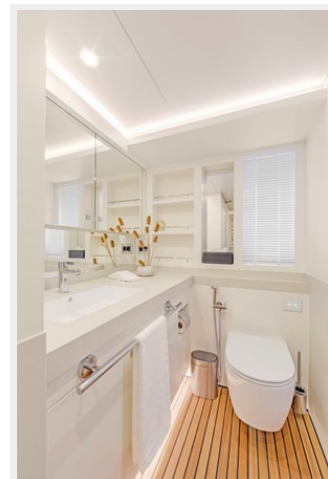
6095d01_13615



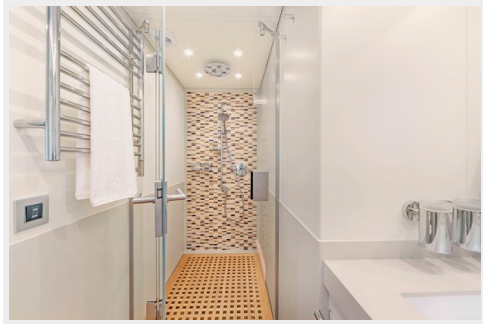
6095d01_13623



6095d01_13633



6095d01_13643



6095d01_13651



6095d01_13654



6095d01_13660



6095d01_13667



6095d01_13671



6095d01_13687



6095d01_13691



CONTACTS

Andrey Shestakov, leading yacht broker of the sales department of Shestakov Yacht Sales Inc. Shestakov Yacht Sales Inc., the official representative of the Miami/Fort Lauderdale FL headquarters.

Contact details

Email:
andrey@shestakovyachtsales.com

Web: shestakovyachtsales.com/en/

Telephones

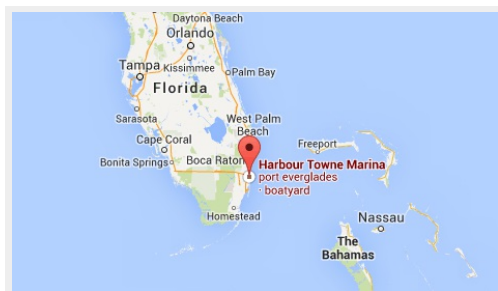
USA: +1(954)274-4435

Office hours

Monday – Saturday: **9:00 - 21:00 EDT**

Sunday: **closed**

Address



Harbour Towne Marina, 850 NE 3rd St,
STE 213, Dania, FL 33004