

## GRACE III — SES CUSTOM



**Builder:** SES CUSTOM

**Year Built:** 2021

**Model:** Sloop

**Price:** Price on Application

**Location:** Turkey

**LOA:** 128' (39.01mm)

**Beam:** 25.32

**Max Draft:** 15' 2" (4.6mm)

Our experienced yacht broker, Andrey Shestakov, will help you choose and buy a yacht that best suits your needs **GRACE III — SES CUSTOM** from our catalogue. Presently, at Shestakov Yacht Sales Inc., we have a wide variety of yachts available on our sale's list. We also work in close contact with all the big yacht manufacturers from all over the world.

If you would like to buy a yacht **GRACE III — SES CUSTOM** or would like help answering any questions concerning purchasing, selling or chartering a yacht, please call **+1(954)274-4435**

# TABLE OF CONTENTS

TABLE OF CONTENTS	2
SPECIFICATIONS	4
Overview	4
Basic Information	5
Dimensions	5
Speed, Capacities and Weight	5
Accommodations	5
Hull and Deck Information	5
Engine Information	5
PHOTOS	6
_BOM3612 final ver2	6
_BOM3643 final	6
_BOM3779 final	6
_BOM3654 final	6
_BOM3786 final	6
_BOM3791 final	6
_BOM3822 final	7
_BOM3806 final	7
GA extra-large	7
Front pic	7
GK2_3841-Edit	8
GK2_3909-Edit	8
GK2_3925-Edit	8
GK2_3947-Edit	8
GK2_3959-Edit	8
GK2_4030-Edit	8
GK2_4062-Edit	9
GK2_4096-Edit	9

---

GK2_4184-Edit (1)	9
GK2_4206-Edit	9
GK2_4311-Edit	9
GK2_4326-Edit	9
GK2_4350-Edit	10
GK2_4362	10
GK2_4377	10
GK2_4388	10
GK2_4426	11
GK2_4440	11
GK2_4443	11
GK2_4446 (1)	11
GK2_4572	12
GK2_4590	12
GK2_4724	12
GK2_4806	12
Grace	12
GK2_4819	12
<b>CONTACTS</b>	<b>13</b>
Contact details	13
Telephones	13
Office hours	13
Address	13

---

# SPECIFICATIONS

---

## Overview

---

Based on the successes of the Truly Classic 128 range, with nr 5 currently under construction, the TC 128 GRACE III which was commissioned early 2021, is now offered for sale, well tested and in her full Glory.

Grace III was built by SES Yachts in Istanbul to an outstanding standard of quality, luxury and workmanship, representing an unique opportunity to any quality- and delivery time - conscientious buyer.

Comprising a lot of best class equipment such as Lewmar sailing systems and hydraulics, the aluminium hull built by the iconic aluminium hull builder Bloemsma in the Netherlands, the rigging package containing carbon spars and rod rigging by Hall Spars, hydraulic furlers by Reckmann, propulsion system by Scania and Hundested etc, and of course the design by Hoek Design Naval Architects from the Netherlands.

Currently SES Yachts have two more Hoek Design projects under construction.

As requested by the owner, the yacht was designed with a single large main deckhouse and an open and spacious cockpit with steering position set well aft. In addition, this yacht has a fractional sail plan, which provides her with a sparkling performance in light winds.

The boom is of a Park Avenue type for easy sail handling.

The yacht is fitted with a torpedo-style T-bulb keel which was carefully designed using Computational Fluid Dynamics (CFD) and positioned slightly further aft so that it relates to the mast step position and the machinery space positioned slightly further aft in this yacht.

With a free suspended spade rudder and a similar righting moment to that of a J-Class, she is a powerful and exciting sailing yacht.

Down below and forward of the large deckhouse you will find the saloon, which is partly covered by the deckhouse, creating a spacious double ceiling height. Aft of the deckhouse an elegant and spacious master cabin with his elaborate ensembles. Forward of the salon there are a twin bed + pullman berth guest cabin to Port and a VIP cabin to Starboard, followed by the Galley and crew mess on Starboard and opposite on Port side a flex cabin which can be used for extra guests during owners use or extra crew during charters. In the bow area there is ample accommodation for 4 crew divided over two cabins. The yacht offers a maximum accommodation for 9 guests with 4 crew or 7 guests with 6 crew. The classical styling throughout is by Hoek Design, including the exterior and interior styling and all naval architecture.

A walkthrough video is available on request.

---

## Basic Information

---

**Category:** Sloop

**Model Year:** 2021

**Year Built:** 2021

**Country:** Turkey

---

## Dimensions

---

**LOA:** 128' (39.01mm)

**Beam:** 25.32

**Max Draft:** 15' 2" (4.6mm)

---

## Speed, Capacities and Weight

---

**Gross Tonnage:** 131 Pounds

---

## Accommodations

---

**Total Cabins:** 6

---

## Hull and Deck Information

---

**Hull Material:** Aluminum

---

## Engine Information

---

**Engines:** 1

**Manufacturer:** Scania

# PHOTOS

**\_BOM3612 final ver2**



**\_BOM3643 final**



**\_BOM3654 final**



**\_BOM3779 final**



**\_BOM3786 final**



**\_BOM3791 final**



**\_BOM3806 final**



**\_BOM3822 final**



**Front pic**



**GA extra-large**



GK2\_3841-Edit



GK2\_3909-Edit



GK2\_3925-Edit



GK2\_3947-Edit



GK2\_3959-Edit



GK2\_4030-Edit





GK2\_4062-Edit



GK2\_4096-Edit



GK2\_4184-Edit (1)



GK2\_4206-Edit



GK2\_4311-Edit



GK2\_4326-Edit



GK2\_4350-Edit



GK2\_4362



GK2\_4377



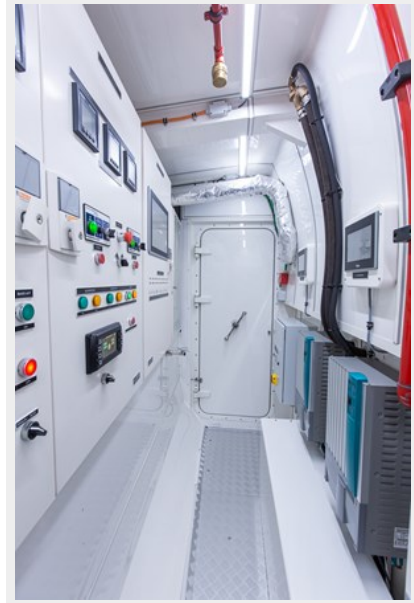
GK2\_4388



GK2\_4426



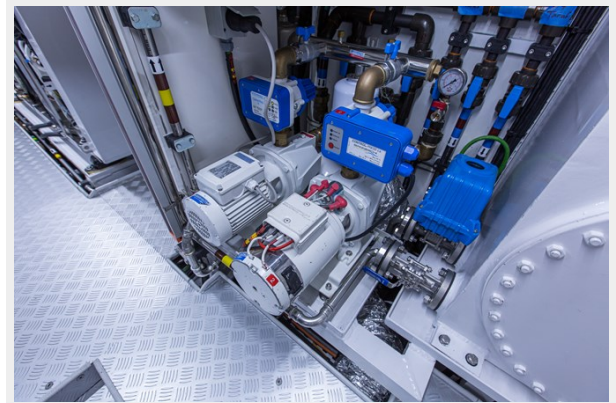
GK2\_4440



GK2\_4443



GK2\_4446 (1)



GK2\_4572



GK2\_4590



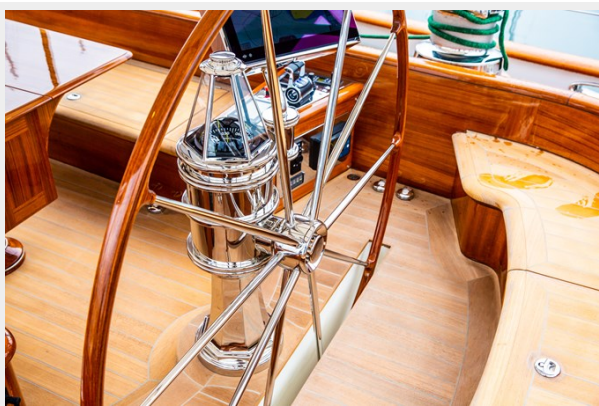
GK2\_4724



GK2\_4806



GK2\_4819



Grace



# CONTACTS

---

Andrey Shestakov, leading yacht broker of the sales department of Shestakov Yacht Sales Inc. Shestakov Yacht Sales Inc., the official representative of the Miami/Fort Lauderdale FL headquarters.

## Contact details

---

Email: [andrey@shestakovyachtsales.com](mailto:andrey@shestakovyachtsales.com)

Web: [shestakovyachtsales.com/en/](http://shestakovyachtsales.com/en/)

## Telephones

---

USA: +1(954)274-4435

## Office hours

---

Monday – Saturday: **9:00 - 21:00** EDT

Sunday: **closed**

## Address

---



Harbour Towne Marina, 850 NE 3rd St,  
STE 213, Dania, FL 33004