

CAMARIK — CUSTOM LINE



Builder: CUSTOM LINE

Year Built: 2005

Model: Motor Yacht

Price: PRICE ON APPLICATION

Location: Spain

LOA: 111' 7" (34mm)

Beam: 23.22

Min Draft: 6' 1" (1.85mm)

Our experienced yacht broker, Andrey Shestakov, will help you choose and buy a yacht that best suits your needs **Camarik — CUSTOM LINE** from our catalogue. Presently, at Shestakov Yacht Sales Inc., we have a wide variety of yachts available on our sale's list. We also work in close contact with all the big yacht manufacturers from all over the world.

If you would like to buy a yacht **Camarik — CUSTOM LINE** or would like help answering any questions concerning purchasing, selling or chartering a yacht, please call **+1(954)274-4435**

TABLE OF CONTENTS

TABLE OF CONTENTS	2
SPECIFICATIONS	5
Overview	5
Basic Information	5
Dimensions	5
Speed, Capacities and Weight	5
Accommodations	5
Hull and Deck Information	5
Engine Information	6
PHOTOS	7
image00064	7
image00059	7
image00061	7
image00063	7
image00060	7
image00065	7
image00066	8
image00062	8
image00047	8
image00048	8
image00049	8
image00051	8
image00046	9
image00050	9
image00052	9
image00058	9
image00057	9
image00053	9

image00056	10
image00042	10
image00039	10
image00041	10
image00036	10
image00045	10
image00034	11
image00040	11
image00001	11
image00016	11
image00035	11
image00038	11
image00004	12
image00002	12
image00008	12
image00006	12
image00011	12
image00015	12
image00019	13
image00028	13
image00020	13
image00024	13
image00026	13
image00031	13
image00025	14
image00027	14
image00030	14
image00032	14
image00035	14

image00033	14
CONTACTS	15
Contact details	15
Telephones	15
Office hours	15
Address	15

SPECIFICATIONS

Overview

Custom Line 112 built 2005 with 2 x 2638 cv MTU. Great large spaces with 5 cabins with accommodation for up to 11 guests plus 3 crew cabins. One owner from new. Interior completely renovated.

Basic Information

Category: Motor Yacht

Model Year: 2005

Year Built: 2005

Country: Spain

Dimensions

LOA: 111' 7" (34mm)

Beam: 23.22

Min Draft: 6' 1" (1.85mm)

Speed, Capacities and Weight

Water Capacity: 3000 Gallons

Fuel Capacity: 5283.44 Gal Gallons

Accommodations

Total Cabins: 5

Total Berths: 11

Total Heads: 6

Crew Cabin: 6

Crew Heads: 4

Hull and Deck Information

Hull Material: Fiberglass

Hull Configuration: Planing

Engine Information

Engines: 2

Manufacturer: MTU

Engine Type: Inboard

Fuel Type: Diesel

PHOTOS

image00064



image00059



image00061



image00063



image00060



image00065



image00066



image00062



image00047



image00048



image00049



image00051



image00046



image00050

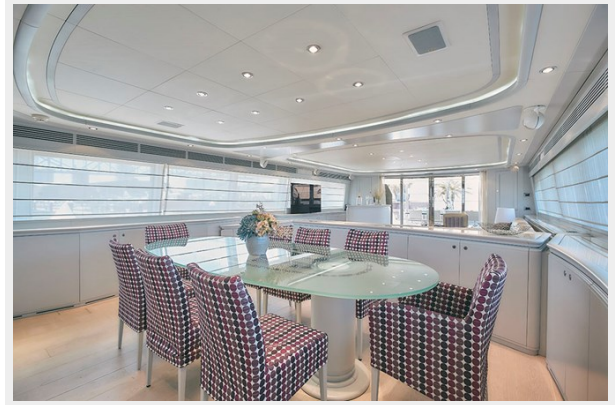


image00052



image00058



image00057

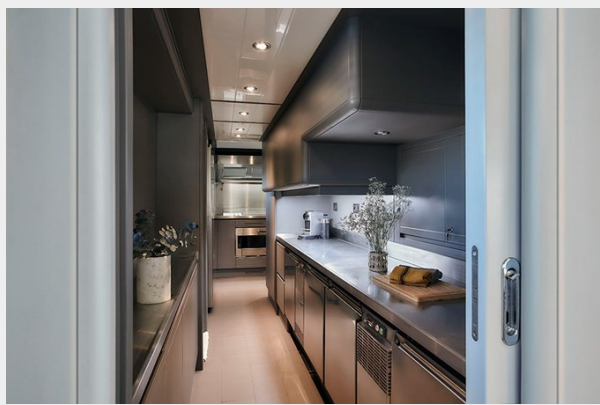


image00053

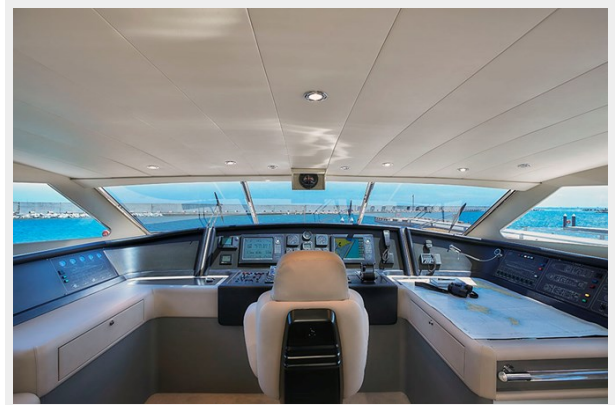


image00056



image00042



image00039



image00041



image00036



image00045



image00034



image00040



image00001



image00016



image00035



image00038



image00004



image00002



image00008



image00006



image00011



image00015



image00019



image00028



image00020



image00024



image00026



image00031

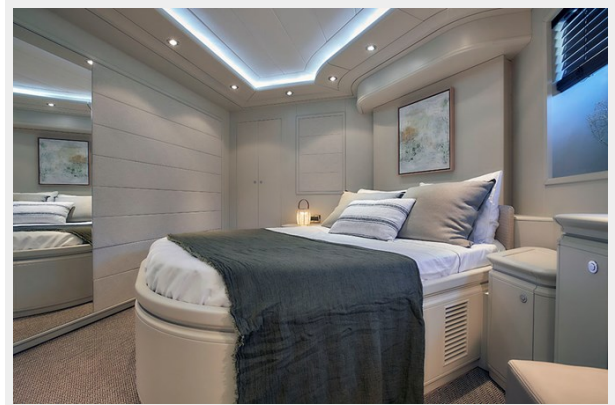


image00025



image00027



image00030



image00032



image00035



image00033



CONTACTS

Andrey Shestakov, leading yacht broker of the sales department of Shestakov Yacht Sales Inc. Shestakov Yacht Sales Inc., the official representative of the Miami/Fort Lauderdale FL headquarters.

Contact details

Email: andrey@shestakovyachtsales.com

Web: shestakovyachtsales.com/en/

Telephones

USA: +1(954)274-4435

Office hours

Monday – Saturday: **9:00 - 21:00** EDT

Sunday: **closed**

Address



Harbour Towne Marina, 850 NE 3rd St,
STE 213, Dania, FL 33004