

CAROL ANN II — SEAWIND CATAMARANS



Builder: SEAWIND CATAMARANS

Year Built: 1997

Model: Cruiser

Price: PRICE ON APPLICATION

Location: United States

LOA: 42' (12.8mm)

Beam: 20

Min Draft: 3' (0.91mm)

Max Draft: 3' (0.91mm)

Cruise Speed: 7 Knots Kts. (8 MPH)

Max Speed: 9 Knots Kts. (10 MPH)

Our experienced yacht broker, Andrey Shestakov, will help you choose and buy a yacht that best suits your needs **Carol Ann II — SEAWIND CATAMARANS** from our catalogue. Presently, at Shestakov Yacht Sales Inc., we have a wide variety of yachts available on our sale's list. We also work in close contact with all the big yacht manufacturers from all over the world.

If you would like to buy a yacht **Carol Ann II — SEAWIND CATAMARANS** or would like help answering any questions concerning purchasing, selling or chartering a yacht, please call **+1(954)274-4435**

TABLE OF CONTENTS

TABLE OF CONTENTS	2
SPECIFICATIONS	5
Overview	5
Basic Information	5
Dimensions	5
Speed, Capacities and Weight	6
Accommodations	6
Hull and Deck Information	6
Engine Information	6
PHOTOS	7
2	7
3	7
4	7
5	7
7	8
6	8
9	8
8	8
10	9
11	9
12	9
13	9
14	9
15	9
16	10
17	10
18	10
19	10

20	10
21	10
22	11
23	11
24	11
25	11
26	11
27	11
28	12
29	12
30	12
31	12
33	12
32	12
35	13
34	13
36	13
37	13
38	14
39	14
40	14
41	14
42	14
43	14
44	15
45	15
46	15
47	15
48	15

49	15
50	16
51	16
52	16
53	16
54	16
55	16
56	17
57	17
58	17
59	17
60	17
CONTACTS	18
Contact details	18
Telephones	18
Office hours	18
Address	18

SPECIFICATIONS

Overview

Discover new lands in style while indulging yourself in unparalleled comfort aboard this 42-foot Seawind Venturer cruising catamaran. The innate design of this boat centers around safety and fuel efficiency, making it ideal for ventures around the Great Loop or cruises to the Bahamas and beyond.

Seawind Yachts, originated in Australia, are reputed for constructing robust, worldwide voyaging catamarans. Equipped with a 200-gallon fuel capacity, this boat exhibits an impressive cruising range well beyond 500 miles with a fuel economy of roughly 2.5 gallons per hour. She fulfills all the draft and height requisites for the Great Loop journey and possesses sufficient strength and stability for sailing across The Bahamas and farther.

Basic Information

Category: Cruiser

Sub Category: Cruiser

Model Year: 1997

Year Built: 1997

Country: United States

Dimensions

LOA: 42' (12.8mm)

Beam: 20

Min Draft: 3' (0.91mm)

Max Draft: 3' (0.91mm)

Speed, Capacities and Weight

Cruise Speed: 7 Knots Kts. (8 MPH)

Cruise Speed Range: 120

Max Speed: 9 Knots Kts. (10 MPH)

Max Speed Range: 100 Kts.

Gross Tonnage: 6 Pounds

Water Capacity: 60 Gallons

Holding Tank: 20 Gal Gallons

Fuel Capacity: 50 Gal Gallons

Accommodations

Total Cabins: 3

Total Berths: 6

Sleeps: 6

Total Heads: 2

Hull and Deck Information

Hull Material: Fiberglass

Deck Material: Fiberglass

Hull Configuration: Catamaran

Hull Designer: Seawind Catamarans

Interior Designer: Seawind Catamarans

Engine Information

Engines: 2

Manufacturer: Yanmar

Fuel Type: Diesel

PHOTOS

2



3



4



5



6



7



8



9



10



11



12



13



14



15



16



17



18



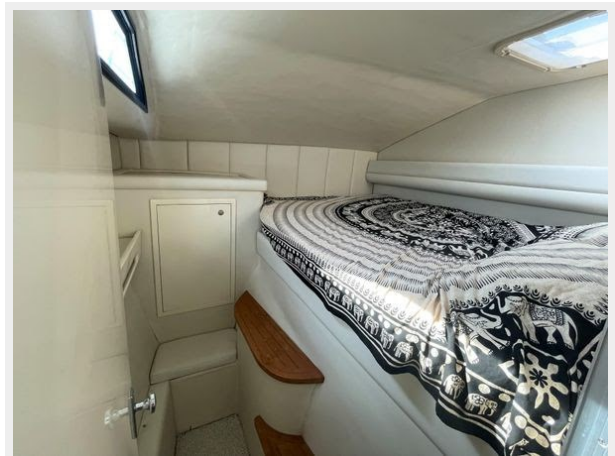
19



20



21



22



23



24



25



26



27



28



29



30



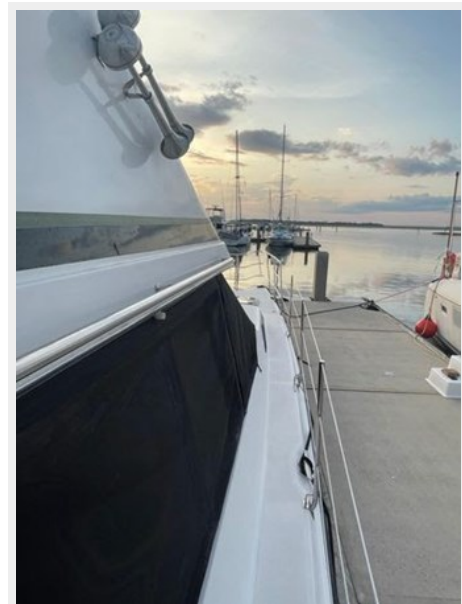
31



32



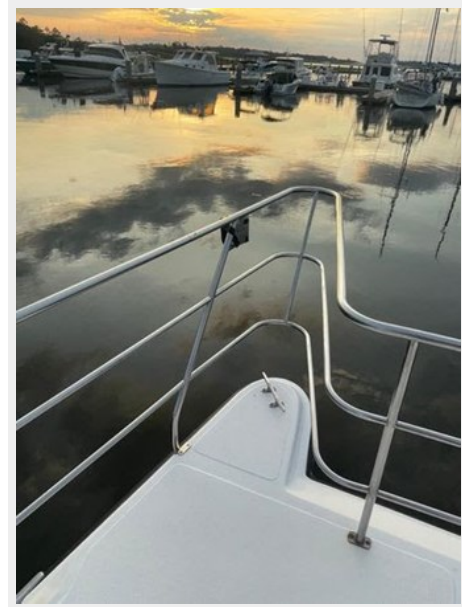
33



34



35



36



37



38



39



40



41



42



43



44



45



46



47



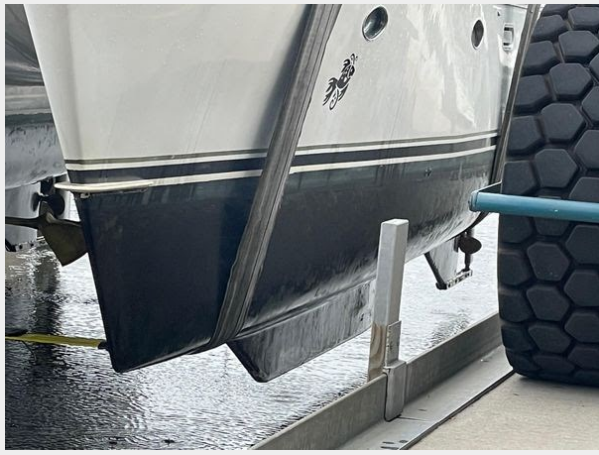
48



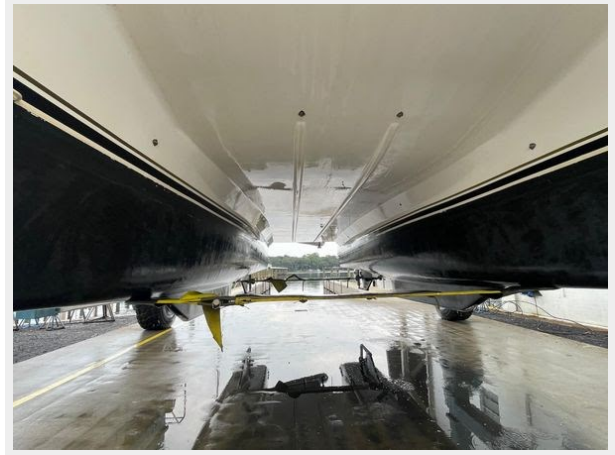
49



50



51



52



53



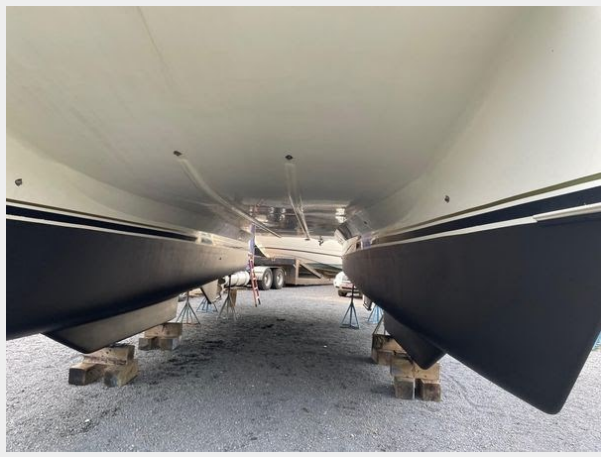
54



55



56



57



58



59



60



CONTACTS

Andrey Shestakov, leading yacht broker of the sales department of Shestakov Yacht Sales Inc. Shestakov Yacht Sales Inc., the official representative of the Miami/Fort Lauderdale FL headquarters.

Contact details

Email: andrey@shestakovyachtsales.com

Web: shestakovyachtsales.com/en/

Telephones

USA: +1(954)274-4435

Office hours

Monday – Saturday: **9:00 - 21:00** EDT

Sunday: **closed**

Address



Harbour Towne Marina, 850 NE 3rd St,
STE 213, Dania, FL 33004