

## TROPICAL PASSAGE — TIARA



**Builder:** TIARA

**Year Built:** 1996

**Model:** cruiser

**Price:** \$169,000 USD

**Location:** United States

**LOA:** 40' (12.19m)

**Cruise Speed:** 20 Knots Kts. (23 MPH)

**Max Speed:** 29 Knots Kts. (33 MPH)

Our experienced yacht broker, Andrey Shestakov, will help you choose and buy a yacht that best suits your needs **TROPICAL PASSAGE — TIARA** from our catalogue. Presently, at Shestakov Yacht Sales Inc., we have a wide variety of yachts available on our sale's list. We also work in close contact with all the big yacht manufacturers from all over the world.

If you would like to buy a yacht **TROPICAL PASSAGE — TIARA** or would like help answering any questions concerning purchasing, selling or chartering a yacht, please call **+1(954)274-4435**

# TABLE OF CONTENTS

TABLE OF CONTENTS	2
SPECIFICATIONS	4
Basic Information	4
Dimensions	4
Speed, Capacities and Weight	4
Accommodations	4
Hull and Deck Information	4
PHOTOS	5
9089241_20231019115750553_1_XLARGE	5
9089241_20231019115745625_1_XLARGE	5
9089241_20231019115753293_1_XLARGE	5
9089241_20231019115755378_1_XLARGE	5
9089241_20231019115800292_1_XLARGE	6
9089241_20231019115757317_1_XLARGE	6
9089241_20231019115803981_1_XLARGE	6
9089241_20231019115810215_1_XLARGE	6
9089241_20231019115812221_1_XLARGE	7
9089241_20231019120802349_1_XLARGE	7
9089241_20231019120804284_1_XLARGE	7
9089241_20231019120818984_1_XLARGE	7
9089241_20231019125539243_1_XLARGE	8
9089241_20231019120822186_1_XLARGE	8
9089241_20231022084049775_1_XLARGE	8
9089241_20231022084052921_1_XLARGE	8
9089241_20231022084114387_1_XLARGE	9
CONTACTS	10
Contact details	10
Telephones	10

---

Office hours

10

---

Address

10

---

# SPECIFICATIONS

---

## Basic Information

---

**Category:** cruiser

**Sub Category:** Express

**Model Year:** 1996

**Year Built:** 1996

**Country:** United States

## Dimensions

---

**LOA:** 40' (12.19mm)

## Speed, Capacities and Weight

---

**Cruise Speed:** 20 Knots Kts. (23 MPH)

**Cruise Speed Range:** 300

**Max Speed:** 29 Knots Kts. (33 MPH)

**Max Speed Range:** 220 Kts.

**Gross Tonnage:** 19.5 Pounds

## Accommodations

---

**Total Cabins:** 2

**Total Berths:** 4

**Sleeps:** 4

**Total Heads:** 1

## Hull and Deck Information

---

**Hull Material:** Fiberglass

**Hull Designer:** Tiara Yachts

**Interior Designer:** Tiara Yachts

# PHOTOS

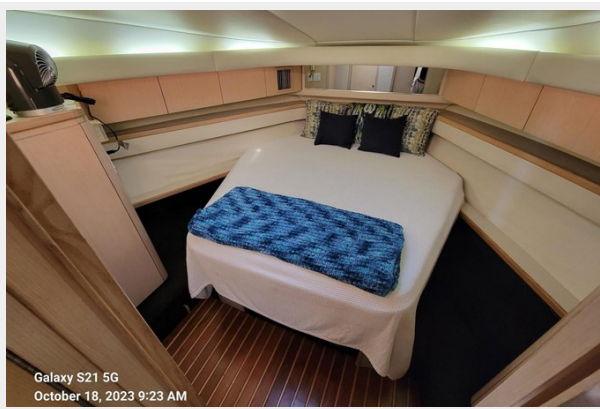
9089241\_20231019115750553\_1\_XLARGE

9089241\_20231019115745625\_1\_XLARGE

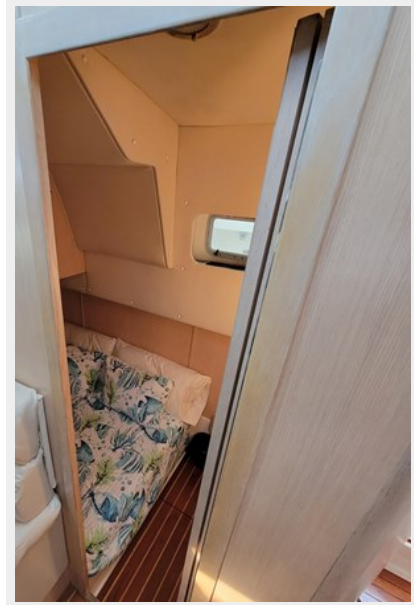


9089241\_20231019115753293\_1\_XLARGE

9089241\_20231019115755378\_1\_XLARGE



9089241\_20231019115800292\_1\_XLARGE



9089241\_20231019115757317\_1\_XLARGE



9089241\_20231019115803981\_1\_XLARGE



9089241\_20231019115810215\_1\_XLARGE



9089241\_20231019115812221\_1\_XLARGE



9089241\_20231019120802349\_1\_XLARGE



9089241\_20231019120804284\_1\_XLARGE



9089241\_20231019120818984\_1\_XLARGE



9089241\_20231019125539243\_1\_XLARGE

9089241\_20231019120822186\_1\_XLARGE



9089241\_20231022084049775\_1\_XLARGE

9089241\_20231022084052921\_1\_XLARGE





9089241\_20231022084114387\_1\_XLARGE



# CONTACTS

---

Andrey Shestakov, leading yacht broker of the sales department of Shestakov Yacht Sales Inc. Shestakov Yacht Sales Inc., the official representative of the Miami/Fort Lauderdale FL headquarters.

## Contact details

---

Email: [andrey@shestakovyachtsales.com](mailto:andrey@shestakovyachtsales.com)

Web: [shestakovyachtsales.com/en/](http://shestakovyachtsales.com/en/)

## Telephones

---

USA: +1(954)274-4435

## Office hours

---

Monday – Saturday: **9:00 - 21:00** EDT

Sunday: **closed**

## Address

---



Harbour Towne Marina, 850 NE 3rd St,  
STE 213, Dania, FL 33004