

WHIMSY — VAUDREY MILLER YACHTS



Builder: VAUDREY MILLER YACHTS

Year Built: 2005

Model: Cruising or Racing Sailboat

Price: €1,950,000 EUR

Location: France

LOA: 78' 9" (24mm)

Beam: 19.45

Min Draft: 10' 6" (3.2mm)

Max Draft: 10' 6" (3.2mm)

Cruise Speed: 8.5 Knots Kts. (10 MPH)

Max Speed: 10 Knots Kts. (12 MPH)

Our experienced yacht broker, Andrey Shestakov, will help you choose and buy a yacht that best suits your needs **WHIMSY — VAUDREY MILLER YACHTS** from our catalogue. Presently, at Shestakov Yacht Sales Inc., we have a wide variety of yachts available on our sale's list. We also work in close contact with all the big yacht manufacturers from all over the world.

If you would like to buy a yacht **WHIMSY — VAUDREY MILLER YACHTS** or would like help answering any questions concerning purchasing, selling or chartering a yacht, please call **+1(954)274-4435**

TABLE OF CONTENTS

TABLE OF CONTENTS	2
SPECIFICATIONS	4
Overview	4
Basic Information	4
Dimensions	4
Speed, Capacities and Weight	4
Accommodations	5
Hull and Deck Information	5
Engine Information	5
PHOTOS	6
3583.1	6
3583.2	6
3583.3	6
3583.4	6
3583.6	6
3583.5	6
3583.7	7
3583.8	7
3583.9	7
3583.10	7
3583.11	7
3583.12	7
3583.13	8
3583.14	8
CONTACTS	9
Contact details	9
Telephones	9
Office hours	9

Address

9

SPECIFICATIONS

Overview

Philippe Briand's visionary touch transformed WHIMSY into a 24-meter masterpiece, combining racing yacht sensitivity with blue-water cruising comfort. Continuous updates ensure she remains a sailing gem. Experience high-speed sailing and global exploration on WHIMSY, thanks to a great design and a history of meticulous enhancements. Only one Owner since new and only ever privately used!

Basic Information

Category: Cruising or Racing Sailboat **Model Year:** 2005

Year Built: 2005 **Country:** France

Dimensions

LOA: 78' 9" (24mm) **Beam:** 19.45

Min Draft: 10' 6" (3.2mm) **Max Draft:** 10' 6" (3.2mm)

Speed, Capacities and Weight

Cruise Speed: 8.5 Knots Kts. (10 MPH) **Cruise Speed Range:** 2800

Max Speed: 10 Knots Kts. (12 MPH) **Gross Tonnage:** 65 Pounds

Water Capacity: 1200 Gallons **Holding Tank:** 303.8 Gal Gallons

Fuel Capacity: 607.6 Gal Gallons

Accommodations

Total Cabins: 3

Total Berths: 6

Sleeps: 6

Total Heads: 3

Crew Cabin: 3

Crew Berths: 3

Crew Heads: 1

Hull and Deck Information

Hull Material: Carbon Composite

Deck Material: Teak

Hull Color: Matterhorn White

Hull Designer: Philippe Briand

Exterior Designer: Philippe Briand Design

Interior Designer: Franck Darnet Design

Engine Information

Engines: 1

Manufacturer: Volvo Penta

Engine Type: Inboard

Fuel Type: Diesel

PHOTOS

3583.1



3583.2



3583.3



3583.4



3583.5



3583.6



3583.7



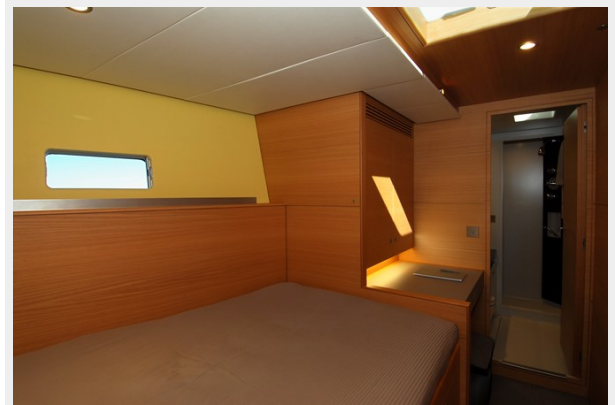
3583.8



3583.9



3583.10



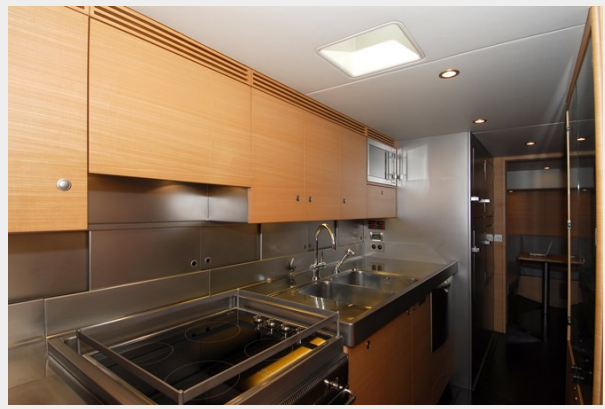
3583.11



3583.12



3583.13



3583.14



CONTACTS

Andrey Shestakov, leading yacht broker of the sales department of Shestakov Yacht Sales Inc. Shestakov Yacht Sales Inc., the official representative of the Miami/Fort Lauderdale FL headquarters.

Contact details

Email: andrey@shestakovyachtsales.com

Web: shestakovyachtsales.com/en/

Telephones

USA: +1(954)274-4435

Office hours

Monday – Saturday: **9:00 - 21:00** EDT

Sunday: **closed**

Address



Harbour Towne Marina, 850 NE 3rd St,
STE 213, Dania, FL 33004