

URBAN LEGEND — BROWARD



Builder: BROWARD

Year Built: 1987

Model: Pilothouse

Price: PRICE ON APPLICATION

Location: United States

LOA: 90' (27.43mm)

Beam: 6.1

Min Draft: 1' 9" (0.52mm)

Max Draft: 2' (0.61mm)

Cruise Speed: 16 Knots Kts. (18 MPH)

Max Speed: 18 Knots Kts. (21 MPH)

Our experienced yacht broker, Andrey Shestakov, will help you choose and buy a yacht that best suits your needs **URBAN LEGEND — BROWARD** from our catalogue. Presently, at Shestakov Yacht Sales Inc., we have a wide variety of yachts available on our sale's list. We also work in close contact with all the big yacht manufacturers from all over the world.

If you would like to buy a yacht **URBAN LEGEND — BROWARD** or would like help answering any questions concerning purchasing, selling or chartering a yacht, please call **+1(954)274-4435**

TABLE OF CONTENTS

TABLE OF CONTENTS	2
SPECIFICATIONS	3
Overview	3
Basic Information	3
Dimensions	3
Speed, Capacities and Weight	4
Accommodations	4
Hull and Deck Information	4
Engine Information	4
PHOTOS	5
10	5
3	6
38	11
CONTACTS	16
Contact details	16
Telephones	16
Office hours	16
Address	16

SPECIFICATIONS

Overview

The 1987 Broward is enhanced with an Aft Deck Extension, European-style Transom, and a Bridge Extension, all in the Euro style. It accommodates Three Staterooms, Three Bathrooms, and two cabins with special space for the crew. The yacht is further equipped with a spacious Aft Deck and a walkthrough Lazarette. The brilliance of the Country Kitchen can't be overlooked, and additionally, there's a walk-behind Bar present in the Salon Area. If you are in quest of a modernised Broward yacht, this 1987 Broward 83' Raised Pilot House model is a must-see and up for sale. It exhibits great affection due to its superior interior implying that even the choosiest of buyers will be satisfied. With an apt cruising speed and economical fuel consumption for a yacht of its size, it is a perfect choice. The 83' Broward can cruise at an estimated speed of 12 Knots and potentially accelerate to around 20 Knots. Owing to its fuel consumption efficiency and an impressive fuel capacity of 5,870 gallons, the yacht is well-suited for island hopping without causing undue fuel station stops.

Basic Information

Category: Pilothouse

Sub Category: Pilothouse

Model Year: 1987

Year Built: 1987

Country: United States

Dimensions

LOA: 90' (27.43mm)

LWL: 90' (27.43mm)

Beam: 6.1

Min Draft: 1' 9" (0.52mm)

Max Draft: 2' (0.61mm)

Speed, Capacities and Weight

Cruise Speed: 16 Knots Kts. (18 MPH)

Cruise Speed Range: 600

Max Speed: 18 Knots Kts. (21 MPH)

Max Speed Range: 450 Kts.

Gross Tonnage: 92 Pounds

Water Capacity: 975 Gallons

Holding Tank: 185 Gal Gallons

Fuel Capacity: 4542 Gal Gallons

Accommodations

Total Cabins: 3

Total Berths: 6

Sleeps: 6

Total Heads: 4

Crew Cabin: 2

Crew Berths: 2

Crew Heads: 1

Hull and Deck Information

Hull Material: Aluminum

Deck Material: Teak

Hull Configuration: Semi-Displacement

Hull Color: WHITE

Hull Designer: Broward

Exterior Designer: Broward

Interior Designer: Owner

Engine Information

Engines: 2

Manufacturer: Detroit Diesel

Engine Type: Inboard

Fuel Type: Diesel

PHOTOS



10

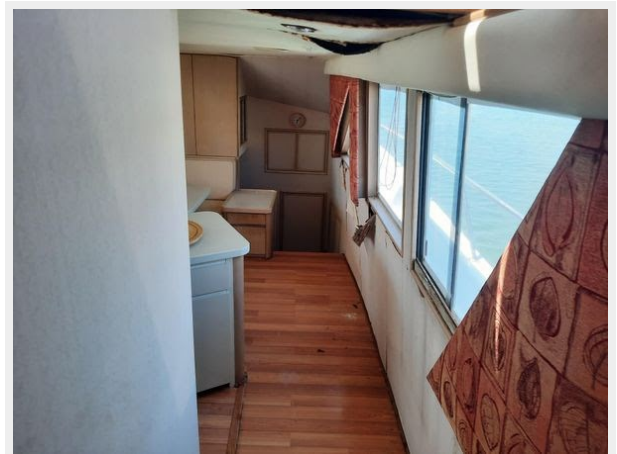
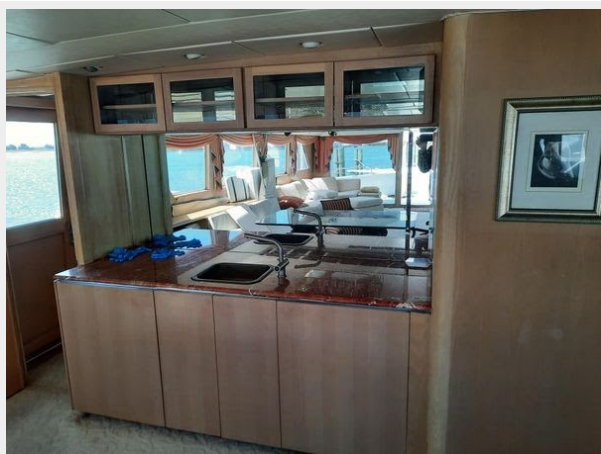




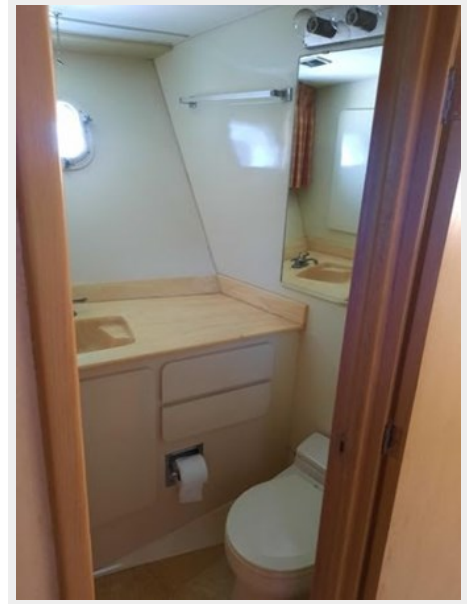
3



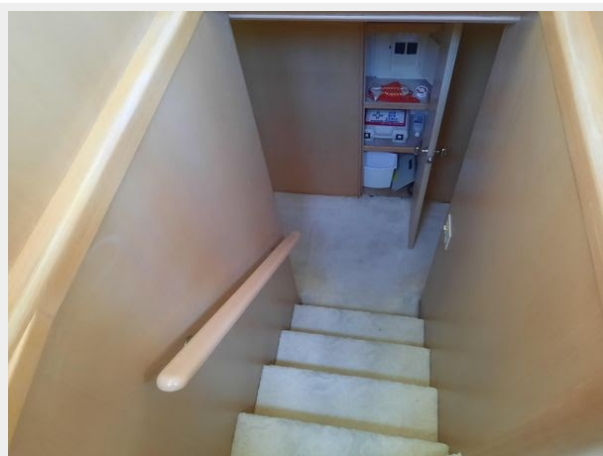
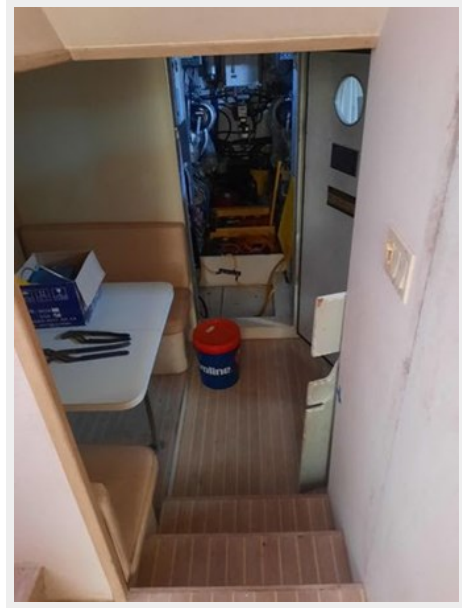


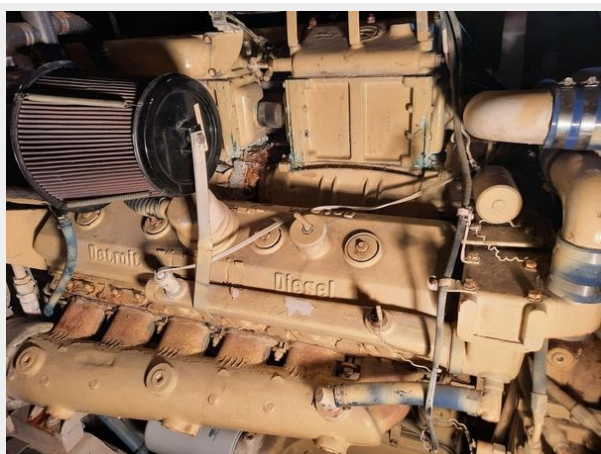


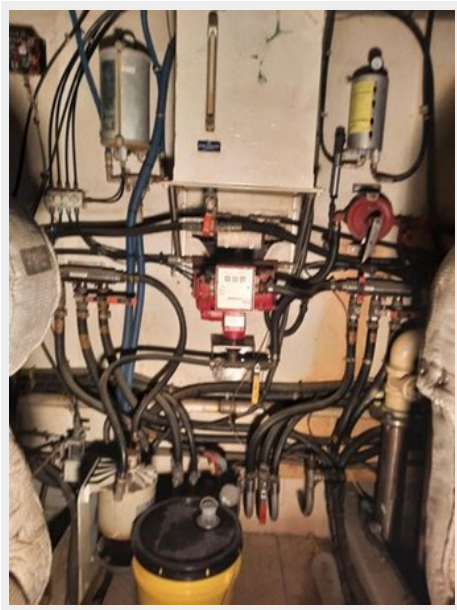


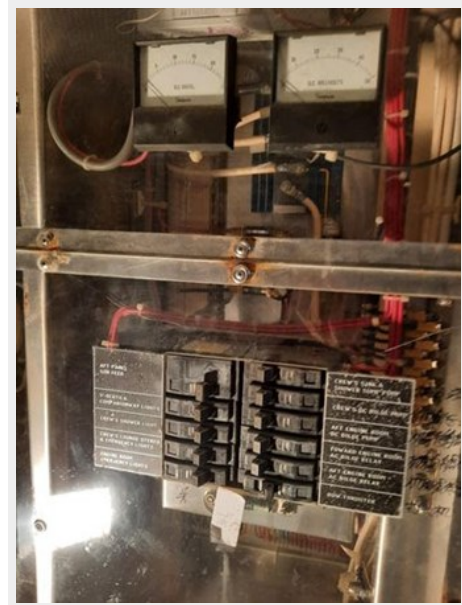
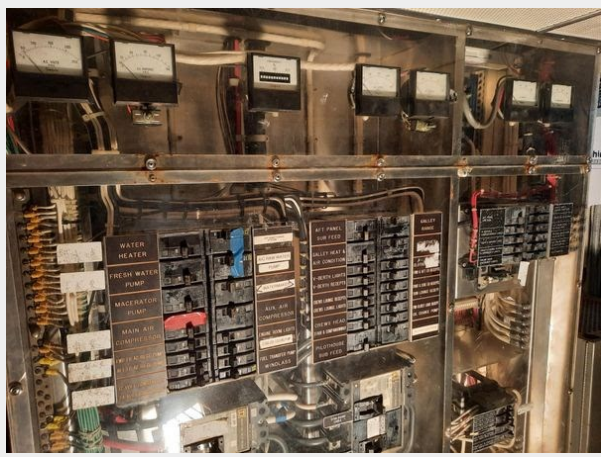
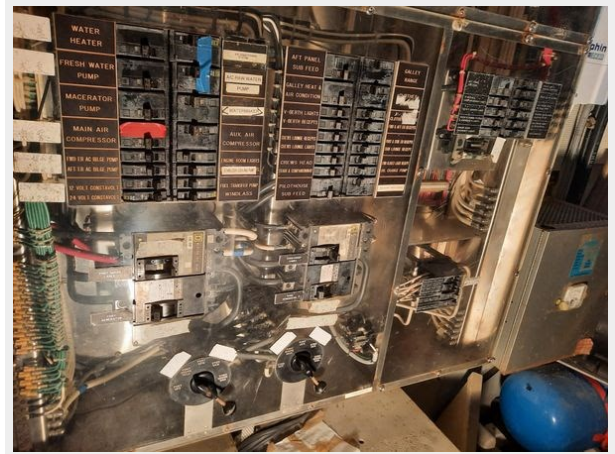


38











CONTACTS

Andrey Shestakov, leading yacht broker of the sales department of Shestakov Yacht Sales Inc. Shestakov Yacht Sales Inc., the official representative of the Miami/Fort Lauderdale FL headquarters.

Contact details

Email: andrey@shestakovyachtsales.com

Web: shestakovyachtsales.com/en/

Telephones

USA: +1(954)274-4435

Office hours

Monday – Saturday: **9:00 - 21:00** EDT

Sunday: **closed**

Address



Harbour Towne Marina, 850 NE 3rd St,
STE 213, Dania, FL 33004