

MDN — HATTERAS



Builder: HATTERAS

Year Built: 1984

Model: Sport Fisherman

Price: PRICE ON APPLICATION

Location: United States

LOA: 52' (15.85mm)

Beam: 16.17

Min Draft: 4' 6" (1.35mm)

Max Draft: 5' (1.5mm)

Cruise Speed: 20 Knots Kts. (23 MPH)

Max Speed: 24 Knots Kts. (28 MPH)

Our experienced yacht broker, Andrey Shestakov, will help you choose and buy a yacht that best suits your needs **MDN — HATTERAS** from our catalogue. Presently, at Shestakov Yacht Sales Inc., we have a wide variety of yachts available on our sale's list. We also work in close contact with all the big yacht manufacturers from all over the world.

If you would like to buy a yacht **MDN — HATTERAS** or would like help answering any questions concerning purchasing, selling or chartering a yacht, please call **+1(954)274-4435**

TABLE OF CONTENTS

TABLE OF CONTENTS	2
SPECIFICATIONS	3
Overview	3
Basic Information	3
Dimensions	3
Speed, Capacities and Weight	3
Accommodations	4
Hull and Deck Information	4
Engine Information	4
PHOTOS	5
4	5
17	7
26	8
29	9
32	9
53	12
60	13
69	15
CONTACTS	16
Contact details	16
Telephones	16
Office hours	16
Address	16

SPECIFICATIONS

Overview

EAGER TO SELL!!!!If you're scouting for the perfect deep-sea fishing vessel, your search stops here. Presenting a Fully Accessorised 52 ft. Hatteras convertible. This strikingly refurbished and expertly maintained 1984 Hatteras 52 Convertible is sure to attract attention and is all geared-up for a fishing trip! She has undergone a detailed 18-month overhaul. 52 Hatteras has been fitted with numerous enhancements. Currently, she is with a very informed owner. All new interior includes Quartz countertops, and a brand-new head system shows her neat and uniquely cared for life. The exterior could use some maintenance. Her motors have less than 400 hours of operation since a significant overhaul and have been subjected to a rigorous maintenance plan. She's been moderately used for fishing and primarily utilized for cruising.

Basic Information

Category: Sport Fisherman

Model Year: 1984

Year Built: 1984

Country: United States

Dimensions

LOA: 52' (15.85mm)

LWL: 53' (16.15mm)

Beam: 16.17

Min Draft: 4' 6" (1.35mm)

Max Draft: 5' (1.5mm)

Speed, Capacities and Weight

Cruise Speed: 20 Knots Kts. (23 MPH)

Cruise Speed Range: 400

Max Speed: 24 Knots Kts. (28 MPH)

Max Speed Range: 300 Kts.

Gross Tonnage: 52 Pounds

Water Capacity: 190 Gallons

Holding Tank: 70 Gal Gallons

Fuel Capacity: 890 Gal Gallons

Accommodations

Total Cabins: 3

Total Berths: 6

Sleeps: 6

Total Heads: 2

Crew Cabin: 2

Crew Berths: 2

Crew Heads: 1

Hull and Deck Information

Hull Material: Fiberglass

Deck Material: Teak

Hull Configuration: Deep Vee

Hull Designer: Hatteras

Interior Designer: Hatteras

Engine Information

Engines: 2

Manufacturer: Detroit Diesel

Engine Type: Inboard

Fuel Type: Diesel

PHOTOS



4







17

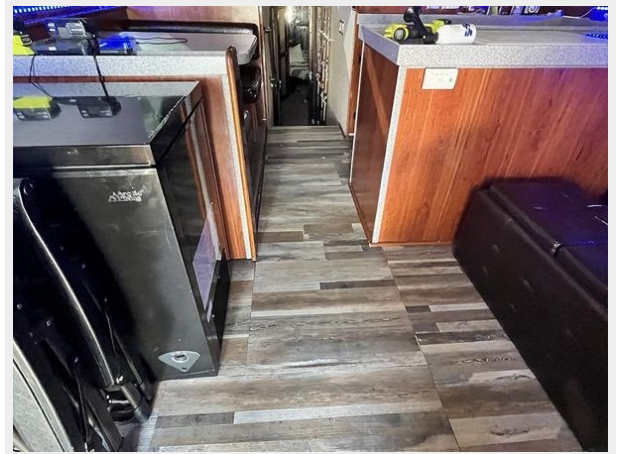




26

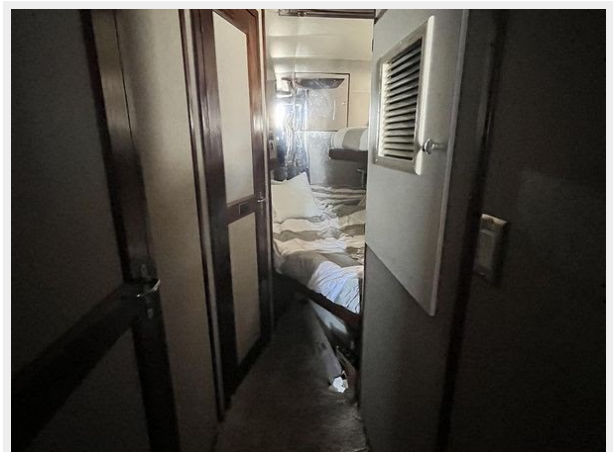


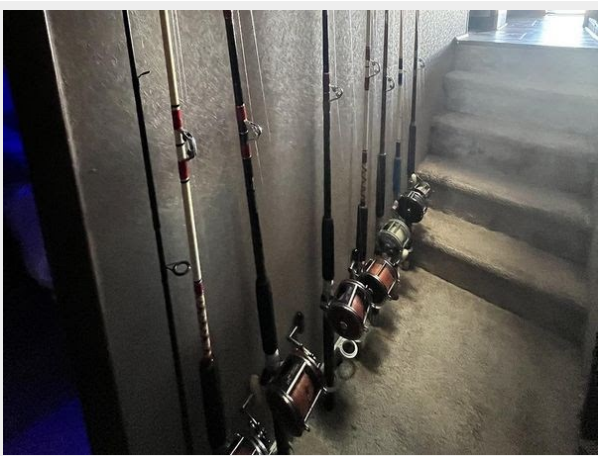
29



32



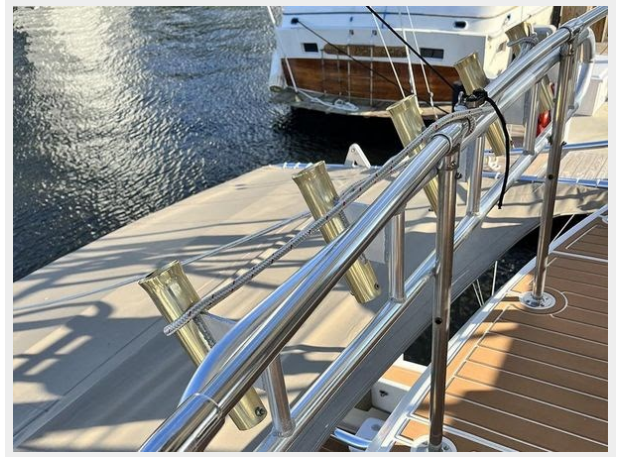




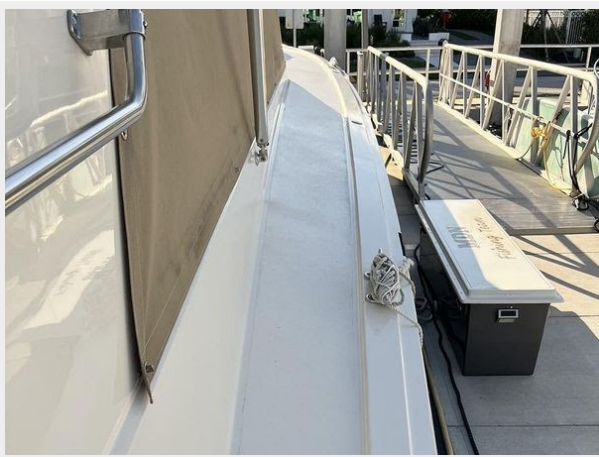


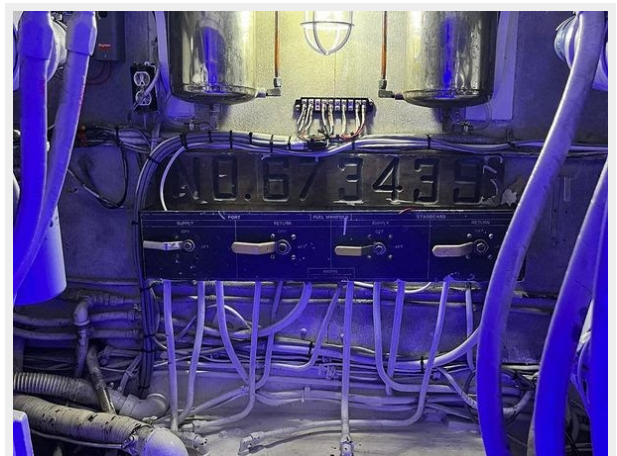
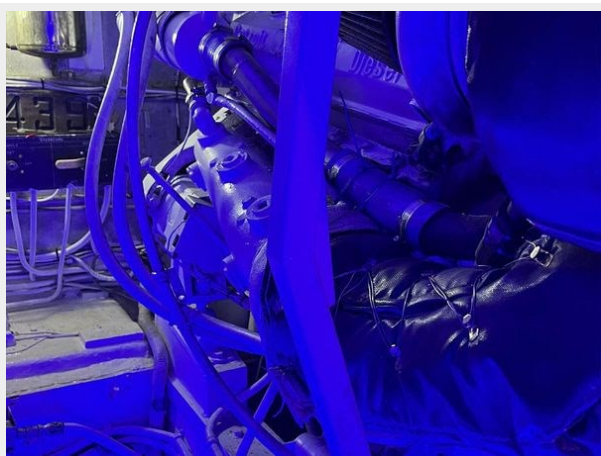
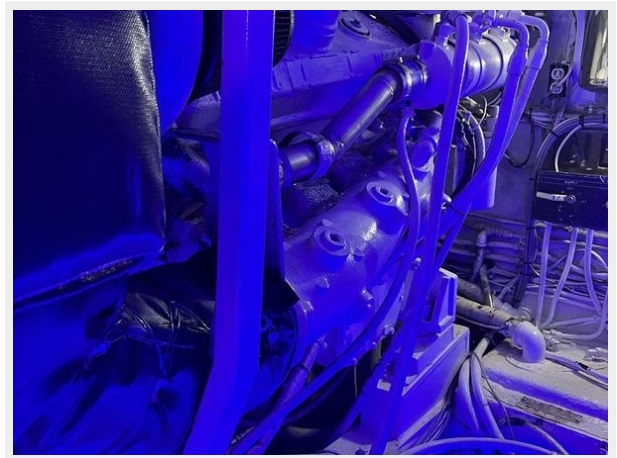
53





60





69



CONTACTS

Andrey Shestakov, leading yacht broker of the sales department of Shestakov Yacht Sales Inc. Shestakov Yacht Sales Inc., the official representative of the Miami/Fort Lauderdale FL headquarters.

Contact details

Email: andrey@shestakovyachtsales.com

Web: shestakovyachtsales.com/en/

Telephones

USA: +1(954)274-4435

Office hours

Monday – Saturday: **9:00 - 21:00** EDT

Sunday: **closed**

Address



Harbour Towne Marina, 850 NE 3rd St,
STE 213, Dania, FL 33004