

LATITUDE — LAZZARA



Builder: LAZZARA

Year Built: 2010

Model: Flybridge

Price: PRICE ON APPLICATION

Location: United States

LOA: 75' (22.86m)

Beam: 18.16

Max Draft: 3' 6" (1.07m)

Our experienced yacht broker, Andrey Shestakov, will help you choose and buy a yacht that best suits your needs **LATITUDE — LAZZARA** from our catalogue. Presently, at Shestakov Yacht Sales Inc., we have a wide variety of yachts available on our sale's list. We also work in close contact with all the big yacht manufacturers from all over the world.

If you would like to buy a yacht **LATITUDE — LAZZARA** or would like help answering any questions concerning purchasing, selling or chartering a yacht, please call **+1(954)274-4435**

TABLE OF CONTENTS

TABLE OF CONTENTS	2
SPECIFICATIONS	6
Overview	6
Basic Information	6
Dimensions	6
Speed, Capacities and Weight	6
Accommodations	6
Hull and Deck Information	7
Engine Information	7
PHOTOS	8
Stbd profile	8
Port profile	8
Stbd quarter profile	8
Port quarter profile	8
Stern profile	8
Cockpit	8
Salon	9
Galley	9
Bow profile	9
Master stateroom	9
Hydraulic swim platform (chocks shown in the photo do not convey)	9
Aft deck	9
Cockpit access from stbd	10
Cockpit view from port	10
Cockpit view from stbd	10
Volvo joystick on port aft deck	10
Volvo joystick on stbd aft dec	10
Cockpit	10

Salon	11
Port quarter profile	11
Salon looking aft	11
Stbd salon	11
Bar storage (cabinet with bottle and glass racks)	11
Wet bar with Subzero refrigerator drawers	11
Day head	12
Vanity in the day head	12
Salon TV	12
Main helm station	12
Main helm	12
Main helm seats	12
Volvo joystick at the main helm	13
TRAC Digital Stabilizers	13
Port profile	13
Atrium	13
Dinette	13
Galley	13
Galley	14
Galley sink	14
Designer range hood	14
Microwave/convection oven	14
Fwd guest stateroom	14
TV in the fwd guest stateroom	14
Fwd guest stateroom storage area	15
Fwd guest stateroom head	15
Port guest stateroom	15
Port guest stateroom head	15
Stbd guest stateroom	15

Stbd guest stateroom head	15
Stbd master stateroom	16
Port master stateroom	16
Upholstered loveseat in master stateroom	16
Desk in master stateroom	16
Master head	16
Master head and shower	16
Master shower	17
Master shower	17
Stbd bow profile	17
Crew stateroom	17
Aft flybridge	17
Aft flybridge	17
Flybridge helm station	18
Flybridge helm station	18
Flybridge helm electronics	18
Volvo joystick at the flybridge helm	18
Stbd quarter profile	18
Foredeck	18
Foredeck	19
Port quarter profile	19
Engine room	19
Engine room	19
072	19
Engine room	19
Engine room	20
Generator	20
Aqua Matic desalinator	20
Port profile	20

Transom	20
Bar (salon/cockpit bar)	20
Volvo throttle control	21
Stbd profile	21
Simrad AP28 autopilot	21
Port profile	21
Monitor displays at the main helm	21
Radar	21
Washer/dryer unit	22
Port profile	22
Closet in the master stateroom	22
78 Lazzara underway	22
Stbd quarter profile underway	22
Port profile underway	22
Stbd profile underway	23
Stbd profile underway	23
Stbd bow profile underway	23
Bow profile underway	23
Stbd profile underway	23
Port bow profile underway	23
CONTACTS	24
Contact details	24
Telephones	24
Office hours	24
Address	24

SPECIFICATIONS

Overview

N/A

Basic Information

Category: Flybridge

Sub Category: Flybridge

Model Year: 2010

Year Built: 2010

Country: United States

Dimensions

LOA: 75' (22.86mm)

Beam: 18.16

Max Draft: 3' 6" (1.07mm)

Speed, Capacities and Weight

Water Capacity: 200 Gallons

Holding Tank: 100 Gal Gallons

Fuel Capacity: 830 Gal Gallons

Accommodations

Total Cabins: 4

Total Berths: 4

Sleeps: 8

Total Heads: 5

Crew Cabin: 2

Crew Berths: 2

Crew Heads: 1

Hull and Deck Information

Hull Material: Fiberglass

Deck Material: Teak

Hull Color: Blue

Exterior Designer: Dick Lazzara

Engine Information

Engines: 2

Manufacturer: Volvo

Fuel Type: Diesel

PHOTOS

Stbd profile



Port profile



Port quarter profile



Stbd quarter profile



Stern profile



Cockpit



Salon



Galley



Master stateroom



Bow profile



Hydraulic swim platform (chocks shown in the photo do not convey)



Aft deck



Cockpit access from stbd



Cockpit view from port



Cockpit view from stbd



Volvo joystick on port aft deck



Volvo joystick on stbd aft dec



Cockpit



Port quarter profile



Salon



Salon looking aft



Stbd salon



Bar storage (cabinet with bottle and glass racks)



Wet bar with Subzero refrigerator drawers



Day head



Vanity in the day head



Salon TV



Main helm station



Main helm



Main helm seats



Volvo joystick at the main helm



TRAC Digital Stabilizers



Port profile



Atrium



Dinette



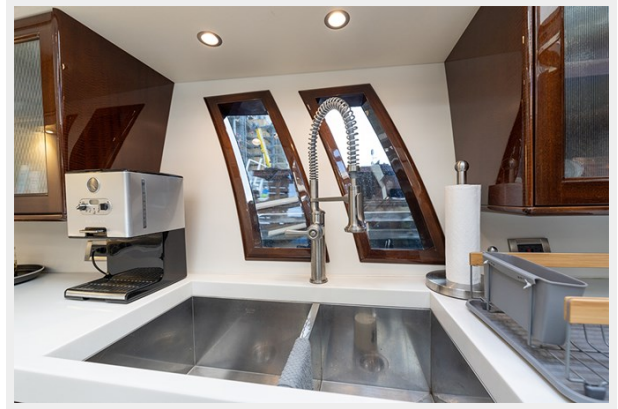
Galley



Galley



Galley sink



Designer range hood



Microwave/convection oven



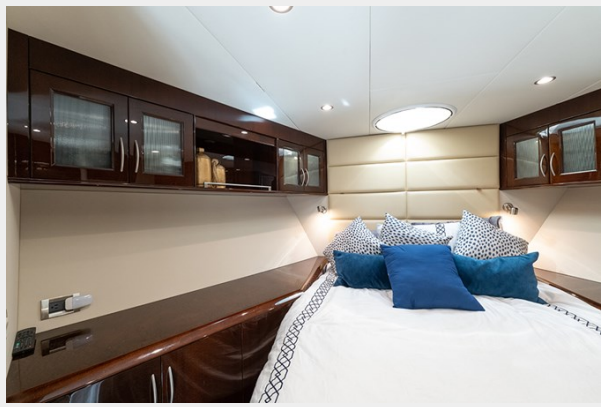
Fwd guest stateroom



TV in the fwd guest stateroom



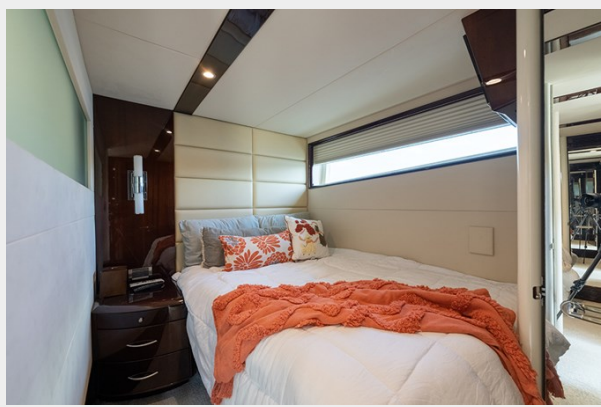
Fwd guest stateroom storage area



Fwd guest stateroom head



Port guest stateroom



Port guest stateroom head



Stbd guest stateroom



Stbd guest stateroom head



Stbd master stateroom



Port master stateroom



Upholstered loveseat in master stateroom



Desk in master stateroom



Master head



Master head and shower



Master shower



Master shower



Crew stateroom



Stbd bow profile



Aft flybridge



Aft flybridge



Flybridge helm station



Flybridge helm station



Flybridge helm electronics



Volvo joystick at the flybridge helm



Stbd quarter profile



Foredeck



Foredeck



Port quarter profile



Engine room



Engine room



072



Engine room



Engine room



Generator



Aqua Matic desalinator



Port profile



Transom



Bar (salon/cockpit bar)



Stbd profile



Volvo throttle control



Simrad AP28 autopilot



Port profile



Monitor displays at the main helm



Radar



Port profile



Washer/dryer unit



Closet in the master stateroom



78 Lazzara underway



Port profile underway



Stbd quarter profile underway



Stbd profile underway



Stbd profile underway



Stbd bow profile underway



Bow profile underway



Stbd profile underway



Port bow profile underway



CONTACTS

Andrey Shestakov, leading yacht broker of the sales department of Shestakov Yacht Sales Inc. Shestakov Yacht Sales Inc., the official representative of the Miami/Fort Lauderdale FL headquarters.

Contact details

Email: andrey@shestakovyachtsales.com

Web: shestakovyachtsales.com/en/

Telephones

USA: +1(954)274-4435

Office hours

Monday – Saturday: **9:00 - 21:00** EDT

Sunday: **closed**

Address



Harbour Towne Marina, 850 NE 3rd St,
STE 213, Dania, FL 33004