

OUTLIER — WEST BAY



Builder: WEST BAY

Year Built: 2001

Model: Motor Yacht

Price: \$599,000 USD

Location: United States

LOA: 58' (17.68m)

Beam: 17.08

Max Draft: 5' 7" (1.7m)

Our experienced yacht broker, Andrey Shestakov, will help you choose and buy a yacht that best suits your needs **OUTLIER — WEST BAY** from our catalogue. Presently, at Shestakov Yacht Sales Inc., we have a wide variety of yachts available on our sale's list. We also work in close contact with all the big yacht manufacturers from all over the world.

If you would like to buy a yacht **OUTLIER — WEST BAY** or would like help answering any questions concerning purchasing, selling or chartering a yacht, please call **+1(954)274-4435**

TABLE OF CONTENTS

TABLE OF CONTENTS	2
SPECIFICATIONS	5
Overview	5
Basic Information	5
Dimensions	5
Speed, Capacities and Weight	5
Accommodations	5
Hull and Deck Information	6
Engine Information	6
PHOTOS	7
58_westbay_sonship_outlier_profiles_02	7
58_westbay_sonship_outlier_profiles_04	7
58_westbay_sonship_outlier_profiles_05	7
58_westbay_sonship_outlier_profiles_07	7
58_westbay_sonship_outlier_profiles_09	7
58_westbay_sonship_outlier_profiles_11	7
58_westbay_sonship_outlier_bow_04	7
58_westbay_sonship_outlier_bow_06	7
58_westbay_sonship_outlier_cockpit_02	8
58_westbay_sonship_outlier_cockpit_03	8
58_westbay_sonship_outlier_cockpit_10	8
58_westbay_sonship_outlier_cockpit_06	8
58_westbay_sonship_outlier_cockpit_12	8
58_westbay_sonship_outlier_flybridge_02	8
58_westbay_sonship_outlier_flybridge_03	8
58_westbay_sonship_outlier_flybridge_04	8
58_westbay_sonship_outlier_flybridge_05	9
58_westbay_sonship_outlier_flybridge_06	9

58_westbay_sonship_outlier_flybridge_09	9
58_westbay_sonship_outlier_flybridge_14	9
58_westbay_sonship_outlier_flybridge_17	9
58_westbay_sonship_outlier_salon_01	9
58_westbay_sonship_outlier_salon_04	9
58_westbay_sonship_outlier_salon_07	9
58_westbay_sonship_outlier_salon_10	10
58_westbay_sonship_outlier_salon_08	10
58_westbay_sonship_outlier_lower_helm_01	10
58_westbay_sonship_outlier_lower_helm_05	10
58_westbay_sonship_outlier_galley_01	10
58_westbay_sonship_outlier_lower_helm_07	10
58_westbay_sonship_outlier_galley_03	11
58_westbay_sonship_outlier_galley_04	11
58_westbay_sonship_outlier_dinette_01	11
58_westbay_sonship_outlier_galley_05	11
58_westbay_sonship_outlier_dinette_02	11
58_westbay_sonship_outlier_dinette_05	11
58_westbay_sonship_outlier_dinette_06	12
58_westbay_sonship_outlier_dinette_07	12
58_westbay_sonship_outlier_master_stateroom_02	12
58_westbay_sonship_outlier_master_stateroom_06	12
58_westbay_sonship_outlier_master_stateroom_08	12
58_westbay_sonship_outlier_master_stateroom_07	12
58_westbay_sonship_outlier_master_stateroom_head_02	13
58_westbay_sonship_outlier_master_stateroom_head_04	13
58_westbay_sonship_outlier_master_stateroom_head_05	13
58_westbay_sonship_outlier_forward_stateroom_02	13
58_westbay_sonship_outlier_forward_stateroom_03	13

58_westbay_sonship_outlier_forward_stateroom_04	13
58_westbay_sonship_outlier_guest_head_01	14
58_westbay_sonship_outlier_guest_stateroom_02	14
58_westbay_sonship_outlier_laundry_01	14
58_westbay_sonship_outlier_engine_room_01	14
58_westbay_sonship_outlier_engine_room_04	14
58_westbay_sonship_outlier_engine_room_05	14
58_westbay_sonship_outlier_engine_room_06	15
58_westbay_sonship_outlier_engine_room_07	15
58_westbay_sonship_outlier_engine_room_08	15
58_westbay_sonship_outlier_engine_room_11	15
58_westbay_sonship_outlier_profiles_running_01	15
58_westbay_sonship_outlier_profiles_running_05	15
58_westbay_sonship_outlier_profiles_running_06	15
58_westbay_sonship_outlier_profiles_running_10	15
58_westbay_sonship_outlier_profiles_running_12	16
58_westbay_sonship_outlier_profiles_running_15	16
CONTACTS	17
Contact details	17
Telephones	17
Office hours	17
Address	17

SPECIFICATIONS

Overview

This beautiful 58 West Bay Sonship just completed her two-year Great Loop journey and is ready for her next adventure to the Keys, Bahamas, or another Great Loop Passage. The boat has been meticulously maintained by a knowledgeable owner-operator, with new upgrades throughout. All annual maintenance on mechanical equipment has been followed. She also comes with a 2021 Zodiac Tender with a 60-hp Mercury outboard.

The Westbay 58 is a three-stateroom, raised pilothouse motor yacht with a cockpit and flybridge and has one of the finest interior arrangements of any similar type of yacht. The interior sound-deadening woodwork is crafted in satin-finished American cherry with high-gloss corner posts throughout. Apart from the galley pilothouse area and the heads, her floors are covered in carpet with a sound-deadening underlayment. Head floors are covered in marble tile. All fabrics, wall coverings, carpets, bedspreads, pillow shams, and more have been upgraded to the highest quality. Closets and hanging lockers are lined with aromatic cedar. The windows on the main deck are gray-tinted, heat-treated laminated glass. There are four separate and independent cooling and heating systems throughout.

The electronics package has been upgraded to Garmin and includes dual chart plotters in Pilot House and Flybridge, autopilot, AIS, and MMSI. Her engine room is clean and well-kept, with full-standing headroom and a thoughtful layout, making maintenance and accessibility to equipment unbelievably easy.

The twin CAT 3196-TA 660 HP diesels have approximately 1000 hours since a major overhaul! New Exhausts 2016 by DeAngelo Marine. The 12 KW generator has 2919 hours (10/23) and the 20 KW generator has 1393 hours (10/23). Regardless of the weather, she provides a great cruising experience with her WesMar stabilizers.

Basic Information

Category: Motor Yacht

Model Year: 2001

Year Built: 2001

Country: United States

Dimensions

LOA: 58' (17.68mm)

Beam: 17.08

Max Draft: 5' 7" (1.7mm)

Speed, Capacities and Weight

Water Capacity: 260 Gallons

Holding Tank: 95 Gal Gallons

Fuel Capacity: 1000 Gal Gallons

Accommodations

Total Cabins: 3

Total Heads: 2

Hull and Deck Information

Hull Material: Fiberglass

Deck Material: Teak

Hull Configuration: Monohull

Hull Designer: West Bay

Interior Designer: West Bay

Engine Information

Engines: 2

Manufacturer: Caterpillar

Engine Type: Inboard

Fuel Type: Diesel

PHOTOS

58_westbay_sonship_outlier_profiles_02



58_westbay_sonship_outlier_profiles_04



58_westbay_sonship_outlier_profiles_05



58_westbay_sonship_outlier_profiles_07



58_westbay_sonship_outlier_profiles_09



58_westbay_sonship_outlier_profiles_11



58_westbay_sonship_outlier_bow_04



58_westbay_sonship_outlier_bow_06



58_westbay_sonship_outlier_cockpit_02



58_westbay_sonship_outlier_cockpit_03



58_westbay_sonship_outlier_cockpit_06



58_westbay_sonship_outlier_cockpit_10



58_westbay_sonship_outlier_cockpit_12



58_westbay_sonship_outlier_flybridge_02



58_westbay_sonship_outlier_flybridge_03



58_westbay_sonship_outlier_flybridge_04



58_westbay_sonship_outlier_flybridge_05



58_westbay_sonship_outlier_flybridge_06



58_westbay_sonship_outlier_flybridge_09



58_westbay_sonship_outlier_flybridge_14



58_westbay_sonship_outlier_flybridge_17



58_westbay_sonship_outlier_salon_01



58_westbay_sonship_outlier_salon_04



58_westbay_sonship_outlier_salon_07



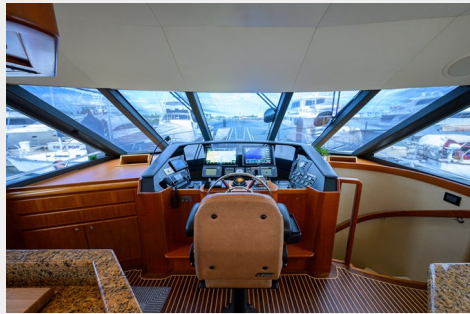
58_westbay_sonship_outlier_salon_08



58_westbay_sonship_outlier_salon_10



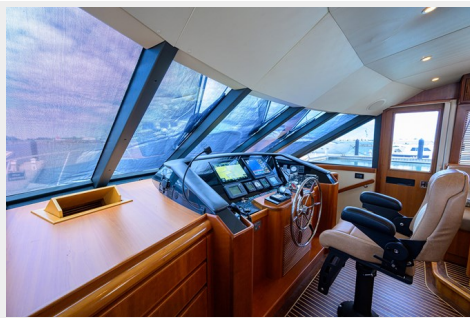
58_westbay_sonship_outlier_lower_helm_01



58_westbay_sonship_outlier_lower_helm_05



58_westbay_sonship_outlier_lower_helm_07



58_westbay_sonship_outlier_galley_01



58_westbay_sonship_outlier_galley_03



58_westbay_sonship_outlier_galley_04



58_westbay_sonship_outlier_galley_05



58_westbay_sonship_outlier_dinette_01



58_westbay_sonship_outlier_dinette_02



58_westbay_sonship_outlier_dinette_05



58_westbay_sonship_outlier_dinette_06



58_westbay_sonship_outlier_dinette_07



58_westbay_sonship_outlier_master_stateroom_02



58_westbay_sonship_outlier_master_stateroom_06



58_westbay_sonship_outlier_master_stateroom_08

58_westbay_sonship_outlier_master_stateroom_07



58_westbay_sonship_outlier_master_stateroom_head_02 58_westbay_sonship_outlier_master_stateroom_head_04



58_westbay_sonship_outlier_master_stateroom_head_05



58_westbay_sonship_outlier_forward_stateroom_02



58_westbay_sonship_outlier_forward_stateroom_03



58_westbay_sonship_outlier_forward_stateroom_04



58_westbay_sonship_outlier_guest_head_01



58_westbay_sonship_outlier_guest_stateroom_02



58_westbay_sonship_outlier_laundry_01



58_westbay_sonship_outlier_engine_room_01



58_westbay_sonship_outlier_engine_room_04



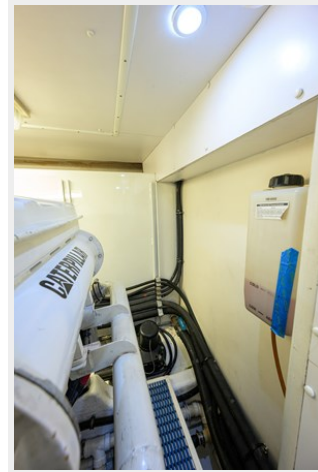
58_westbay_sonship_outlier_engine_room_05



58_westbay_sonship_outlier_engine_room_06



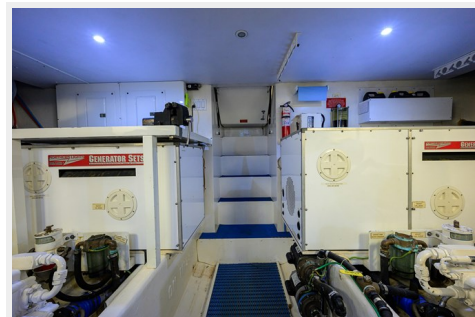
58_westbay_sonship_outlier_engine_room_07



58_westbay_sonship_outlier_engine_room_08



58_westbay_sonship_outlier_engine_room_11



58_westbay_sonship_outlier_profiles_running_01



58_westbay_sonship_outlier_profiles_running_05



58_westbay_sonship_outlier_profiles_running_06



58_westbay_sonship_outlier_profiles_running_10



58_westbay_sonship_outlier_profiles_running_12



58_westbay_sonship_outlier_profiles_running_15



CONTACTS

Andrey Shestakov, leading yacht broker of the sales department of Shestakov Yacht Sales Inc. Shestakov Yacht Sales Inc., the official representative of the Miami/Fort Lauderdale FL headquarters.

Contact details

Email:
andrey@shestakovyachtsales.com

Web: shestakovyachtsales.com/en/

Telephones

USA: +1(954)274-4435

Office hours

Monday – Saturday: **9:00 - 21:00** EDT

Sunday: **closed**

Address



Harbour Towne Marina, 850 NE 3rd St,
STE 213, Dania, FL 33004