

BONNIE LASS — PACIFIC MARINER



Builder: PACIFIC MARINER

Year Built: 1999

Model: Pilothouse

Price: \$495,000 USD

Location: United States

LOA: 65' (19.81mm)

Beam: 17.25

Cruise Speed: 20 Knots Kts. (23 MPH)

Max Speed: 23 Knots Kts. (26 MPH)

Our experienced yacht broker, Andrey Shestakov, will help you choose and buy a yacht that best suits your needs **Bonnie Lass — PACIFIC MARINER** from our catalogue. Presently, at Shestakov Yacht Sales Inc., we have a wide variety of yachts available on our sale's list. We also work in close contact with all the big yacht manufacturers from all over the world.

If you would like to buy a yacht **Bonnie Lass — PACIFIC MARINER** or would like help answering any questions concerning purchasing, selling or chartering a yacht, please call **+1(954)274-4435**

TABLE OF CONTENTS

TABLE OF CONTENTS	2
SPECIFICATIONS	4
Overview	4
Basic Information	4
Dimensions	4
Speed, Capacities and Weight	4
Accommodations	5
Hull and Deck Information	5
Engine Information	5
PHOTOS	6
2	6
3	6
4	6
5	6
6	6
7	6
8	7
9	7
11	7
10	7
12	8
13	8
14	8
15	8
16	9
17	9
18	9
19	9

20	10
21	10
22	10
23	10
24	11
25	11
27	11
26	11
28	12
29	12
CONTACTS	13
Contact details	13
Telephones	13
Office hours	13
Address	13

SPECIFICATIONS

Overview

Bonnie Lass has undergone a complete interior refit recently. Her beautiful, modern interior is highlighted by an electric fire place and retractable large screen TV in the salon. All new headliners, carpet, cabinetry, appliances and light fixture throughout the vessel. The 65' Pacific Mariner reflects the sweptback sculpted hull by William Garden, a master at creating a classical vessel that can take rough seas and still be operated by one or two people. This is achieved by dual pilothouse doors, walk around decks, and great visibility from both navigation stations. The 17' 3" beam helps reduce drag for a top speed of 23-knots or cruising speed of 20-knots. The hydraulic bow thrusters and winches positioned aft simplify docking/anchoring and the all on one level cockpit and galley is great for entertaining and traveling. With all the comforts of home, the Bonnie Lass has three staterooms with separate heads, plus crew facilities and a spacious salon, aft-deck and 5' swim platform for easy boarding. Price greatly reduced - excellent buying opportunity

Basic Information

Category: Pilothouse

Sub Category: Pilothouse

Model Year: 1999

Year Built: 1999

Country: United States

Dimensions

LOA: 65' (19.81m)

Beam: 17.25

Speed, Capacities and Weight

Cruise Speed: 20 Knots Kts. (23 MPH)

Max Speed: 23 Knots Kts. (26 MPH)

Water Capacity: 285 Gallons

Holding Tank: 110 Gal Gallons

Fuel Capacity: 1100 Gal Gallons

Accommodations

Total Cabins: 3

Total Heads: 3

Hull and Deck Information

Hull Material: Fiberglass

Engine Information

Engines: 2

Manufacturer: Detroit Diesel

Engine Type: Inboard

Fuel Type: Diesel

PHOTOS

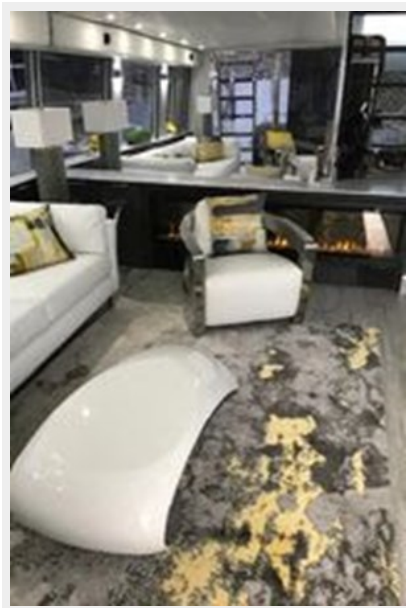
2



3



4



5



6



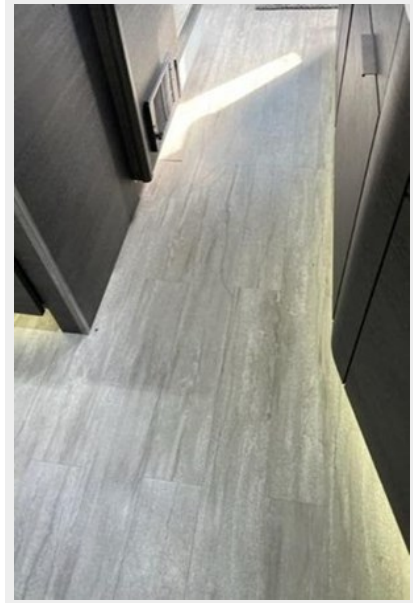
7



8



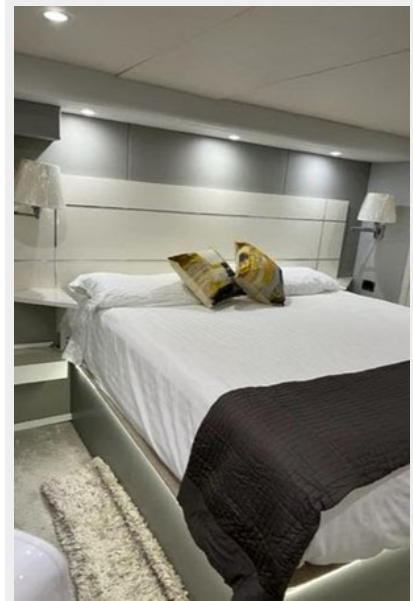
9



10



11



12



13



14



15



16



17



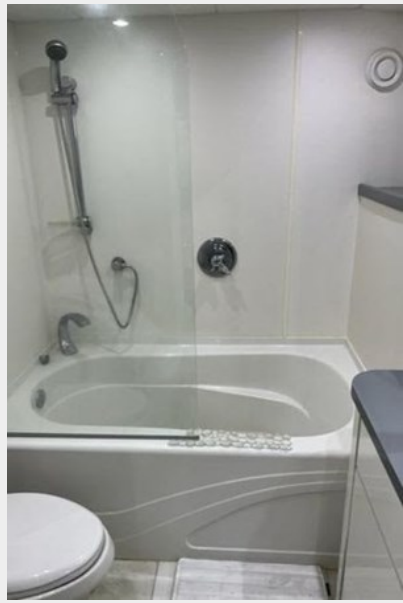
18



19



20



21



22



23



24



25



26



27



28



29



CONTACTS

Andrey Shestakov, leading yacht broker of the sales department of Shestakov Yacht Sales Inc. Shestakov Yacht Sales Inc., the official representative of the Miami/Fort Lauderdale FL headquarters.

Contact details

Email: andrey@shestakovyachtsales.com

Web: shestakovyachtsales.com/en/

Telephones

USA: +1(954)274-4435

Office hours

Monday – Saturday: **9:00 - 21:00** EDT

Sunday: **closed**

Address



Harbour Towne Marina, 850 NE 3rd St,
STE 213, Dania, FL 33004