

## **COSMOCEAN — SEA RAY**



**Builder:** SEA RAY

**Year Built:** 2002

**Model:** cruiser

**Price:** \$118,995 USD

**Location:** United States

**LOA:** 42' (12.8mm)

**Beam:** 13

**Max Draft:** 3' 4" (1.02mm)

**Cruise Speed:** 18 Knots Kts. (21 MPH)

**Max Speed:** 20 Knots Kts. (23 MPH)

Our experienced yacht broker, Andrey Shestakov, will help you choose and buy a yacht that best suits your needs **Cosmocean — SEA RAY** from **our catalogue**. Presently, at **Shestakov Yacht Sales Inc.**, we have a wide variety of yachts available on **our sale's list**. We also work in close contact with all the big **yacht manufacturers** from all over the world.

If you would like to buy a yacht **Cosmocean — SEA RAY** or would like help answering any questions concerning purchasing, selling or chartering a yacht, please call **+1(954)274-4435**

# TABLE OF CONTENTS

TABLE OF CONTENTS	2
SPECIFICATIONS	4
Overview	4
Basic Information	4
Dimensions	4
Speed, Capacities and Weight	4
Accommodations	5
Hull and Deck Information	5
Engine Information	5
PHOTOS	6
3	6
2	6
5	6
4	6
7	7
6	7
8	7
9	7
10	8
11	8
12	8
13	8
14	9
15	9
16	9
17	9
18	10
19	10

---

20	10
21	10
23	11
22	11
24	11
25	11
26	12
CONTACTS	13
Contact details	13
Telephones	13
Office hours	13
Address	13

# SPECIFICATIONS

## Overview

Fall Special on this 2002 Sea Ray 380 Sundancer! Owner has found his new boat and is looking for offers before she is winterized. She is a mid-sized express cruiser that is perfect for a family or friends. Inside, it has double berths fore and aft, and a sofa in the salon that converts for extra guests. Outside there is comfortable seating for many friends, and a complete canvas enclosure for rainy weather. Seller expresses it as in excellent condition! See the many recent updates! Updated Garmin GPS Maps 8612 Updated Garmin Autopilot system Garmin Radar New helm and cockpit seats reupholstered 2022 New cockpit rugs 2022 New hot water heater 2023 New head system 2021 Camper back canvas 2022 New cockpit canvas and isinglass 2023 Molded FRP -Deep V Propulsion: Twin Mercruiser 8.1S Horizon 370 hp each 5 GR27 Batteries for starting, house electric and generator Two 30 Amp Shore power and 7.5kw auxiliary generator

## Basic Information

**Category:** cruiser

**Sub Category:** Express

**Model Year:** 2002

**Year Built:** 2002

**Country:** United States

## Dimensions

**LOA:** 42' (12.8mm)

**LOD:** 38' (11.58mm)

**Beam:** 13

**Max Draft:** 3' 4" (1.02mm)

## Speed, Capacities and Weight

**Cruise Speed:** 18 Knots Kts. (21 MPH) **Max Speed:** 20 Knots Kts. (23 MPH)

**Water Capacity:** 70 Gallons

**Holding Tank:** 42 Gal Gallons

**Fuel Capacity:** 275 Gal Gallons

---

## Accommodations

---

**Total Cabins:** 1

**Total Berths:** 2

**Total Heads:** 1

---

## Hull and Deck Information

---

**Hull Material:** Fiberglass

---

## Engine Information

---

**Engines:** 2

**Manufacturer:** Mercruiser

**Engine Type:** Inboard

**Fuel Type:** Gas

# PHOTOS

2



3



5



4



6



7



8



9



10



11



12



13





14



15



16



17



18



19



20



21



22



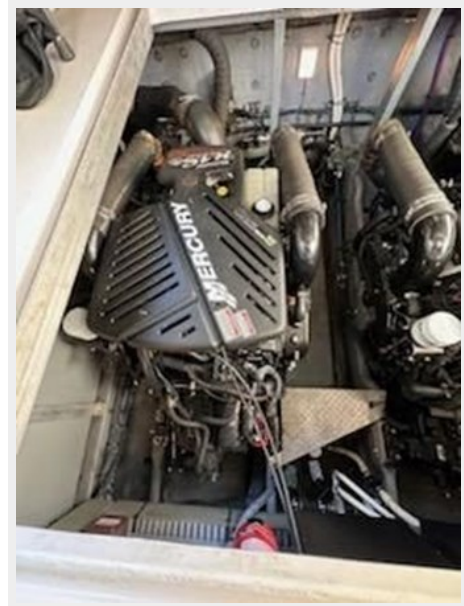
23



24



25



26





# CONTACTS

---

Andrey Shestakov, leading yacht broker of the sales department of Shestakov Yacht Sales Inc. Shestakov Yacht Sales Inc., the official representative of the Miami/Fort Lauderdale FL headquarters.

## Contact details

---

Email: **andrey@shestakovyachtsales.com**

Web: [shestakovyachtsales.com/en/](https://shestakovyachtsales.com/en/)

## Telephones

---

USA: **+1(954)274-4435**

## Office hours

---

Monday – Saturday: **9:00 - 21:00** EDT

Sunday: **closed**

## Address

---



Harbour Towne Marina, 850 NE 3rd St, STE 213, Dania, FL 33004