

## SKIP-N-SCHOOL — PRO-LINE



**Builder:** PRO-LINE

**Year Built:** 2003

**Model:** center\_console

**Price:** \$27,495 USD

**Location:** United States

**LOA:** 20' 6" (6.25m)

**Beam:** 8.5

**Min Draft:** 1' 3" (0.38m)

**Max Speed:** 34.76 Knots Kts. (40 MPH)

Our experienced yacht broker, Andrey Shestakov, will help you choose and buy a yacht that best suits your needs **Skip-N-School — PRO-LINE** from our catalogue. Presently, at **Shestakov Yacht Sales Inc.**, we have a wide variety of yachts available on our sale's list. We also work in close contact with all the big **yacht manufacturers** from all over the world.

If you would like to buy a yacht **Skip-N-School — PRO-LINE** or would like help answering any questions concerning purchasing, selling or chartering a yacht, please call **+1(954)274-4435**

# TABLE OF CONTENTS

TABLE OF CONTENTS	2
SPECIFICATIONS	4
Overview	4
Basic Information	4
Dimensions	4
Speed, Capacities and Weight	4
Accommodations	4
Hull and Deck Information	5
Engine Information	5
PHOTOS	6
2	6
3	6
4	6
5	6
6	6
7	6
8	7
9	7
11	7
10	7
12	8
13	8
14	8
15	8
16	9
17	9
19	9
18	9

---

20	10
21	10
23	10
22	10
24	11
25	11
26	11
27	11
CONTACTS	12
Contact details	12
Telephones	12
Office hours	12
Address	12

---

# SPECIFICATIONS

---

## Overview

---

New lower Price!! Pro-Line 20 Sport, with a Mercury 4 Stroke 150 HP Engine, Ultra Low Emission replaced in 2020 with 50 hours. She has several extras, Custom Bow Shade, Installed Fish Cutting Board at the Stern, and an added dry storage toolbox for emergencies items. Included are updated VHF Antenna, Electronics, saltwater washdown, Head compartment for porta potty, Livewell, Stainless prop, Swim ladder. An Aluminum Trailer with hydraulic axles and spare tire is included. The boat is ready for family fun and fishing.

## Basic Information

---

**Category:** center\_console

**Sub Category:** Center Console

**Model Year:** 2003

**Year Built:** 2003

**Country:** United States

## Dimensions

---

**LOA:** 20' 6" (6.25mm)

**Beam:** 8.5

**Min Draft:** 1' 3" (0.38mm)

## Speed, Capacities and Weight

---

**Max Speed:** 34.76 Knots Kts. (40 MPH) **Fuel Capacity:** 68 Gal Gallons

## Accommodations

---

**Total Heads:** 1

---

## Hull and Deck Information

---

**Hull Material:** Fiberglass

---

## Engine Information

---

**Engines:** 1

**Manufacturer:** Mercury

**Engine Type:** Outboard

**Fuel Type:** Gas

# PHOTOS

2



3



4



5



6



7



8



9



11



10



12



13



14



15





16



17



18



19



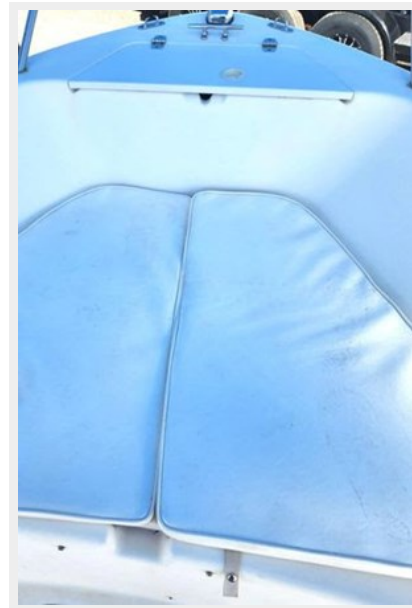
20



21



23



22



24



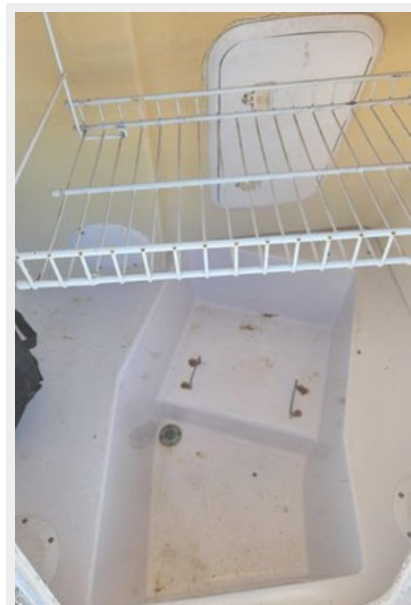
25



26



27



# CONTACTS

---

Andrey Shestakov, leading yacht broker of the sales department of Shestakov Yacht Sales Inc. Shestakov Yacht Sales Inc., the official representative of the Miami/Fort Lauderdale FL headquarters.

## Contact details

---

Email: **andrey@shestakovyachtsales.com**

Web: [shestakovyachtsales.com/en/](http://shestakovyachtsales.com/en/)

## Telephones

---

USA: **+1(954)274-4435**

## Office hours

---

Monday – Saturday: **9:00 - 21:00** EDT

Sunday: **closed**

## Address

---



Harbour Towne Marina, 850 NE 3rd St, STE 213, Dania, FL 33004