

AZURA — MARLOW



Builder: MARLOW

Year Built: 2009

Model: trawler

Price: PRICE ON APPLICATION

Location: Germany

LOA: 76' 4" (23.25m)

Beam: 20.24

Min Draft: 5' 2" (1.57m)

Our experienced yacht broker, Andrey Shestakov, will help you choose and buy a yacht that best suits your needs **AZURA — MARLOW** from our catalogue. Presently, at Shestakov Yacht Sales Inc., we have a wide variety of yachts available on our sale's list. We also work in close contact with all the big yacht manufacturers from all over the world.

If you would like to buy a yacht **AZURA — MARLOW** or would like help answering any questions concerning purchasing, selling or chartering a yacht, please call **+1(954)274-4435**

TABLE OF CONTENTS

| | |
|------------------------------|----|
| TABLE OF CONTENTS | 2 |
| SPECIFICATIONS | 6 |
| Overview | 6 |
| Basic Information | 6 |
| Dimensions | 6 |
| Speed, Capacities and Weight | 6 |
| Accommodations | 7 |
| Hull and Deck Information | 7 |
| Engine Information | 7 |
| PHOTOS | 8 |
| DJI_0324 | 8 |
| DJI_0328 | 8 |
| DJI_0329 | 8 |
| DJI_0331 | 8 |
| DJI_0334 | 8 |
| DJI_0335 | 8 |
| DJI_0338 | 9 |
| DJI_0340 | 9 |
| DJI_0341 | 9 |
| DJI_0342 | 9 |
| DJI_0343 | 9 |
| DJI_0345 | 9 |
| DJI_0349 | 10 |
| DJI_0350 | 10 |
| DJI_0370 | 10 |
| DJI_0383 | 10 |
| DJI_0385 | 10 |
| DJI_0388 | 10 |

| | |
|----------|----|
| DJI_0373 | 11 |
| IMG_2373 | 11 |
| IMG_2395 | 11 |
| IMG_2388 | 11 |
| IMG_2376 | 11 |
| IMG_2387 | 11 |
| IMG_2396 | 12 |
| IMG_2386 | 12 |
| IMG_2392 | 12 |
| IMG_2358 | 12 |
| IMG_2362 | 12 |
| IMG_2415 | 12 |
| IMG_2425 | 13 |
| IMG_2417 | 13 |
| IMG_2416 | 13 |
| IMG_2423 | 13 |
| IMG_2422 | 13 |
| IMG_2421 | 13 |
| IMG_2424 | 14 |
| IMG_2404 | 14 |
| IMG_2409 | 14 |
| IMG_2408 | 14 |
| IMG_2400 | 14 |
| IMG_2402 | 14 |
| IMG_2397 | 15 |
| IMG_2287 | 15 |
| IMG_2293 | 15 |
| IMG_2295 | 15 |
| IMG_2289 | 15 |

| | |
|----------|----|
| IMG_2291 | 15 |
| IMG_2298 | 16 |
| IMG_2288 | 16 |
| IMG_2305 | 16 |
| IMG_2297 | 16 |
| IMG_2290 | 16 |
| IMG_2292 | 16 |
| IMG_2307 | 17 |
| IMG_2318 | 17 |
| IMG_2316 | 17 |
| IMG_2319 | 17 |
| IMG_2306 | 17 |
| IMG_2308 | 17 |
| IMG_2309 | 18 |
| IMG_2311 | 18 |
| IMG_2243 | 18 |
| IMG_2244 | 18 |
| IMG_2245 | 18 |
| IMG_2248 | 18 |
| IMG_2249 | 19 |
| IMG_2250 | 19 |
| IMG_2251 | 19 |
| IMG_2252 | 19 |
| IMG_2253 | 19 |
| IMG_2255 | 19 |
| IMG_2257 | 20 |
| IMG_2258 | 20 |
| IMG_2262 | 20 |
| IMG_2263 | 20 |

| | |
|-----------------|----|
| IMG_2264 | 20 |
| IMG_2265 | 20 |
| IMG_2266 | 21 |
| IMG_2267 | 21 |
| IMG_2282 | 21 |
| IMG_2271 | 21 |
| IMG_2274 | 21 |
| IMG_2277 | 21 |
| IMG_2281 | 22 |
| IMG_2450 | 22 |
| IMG_2453 | 22 |
| IMG_2463 | 22 |
| IMG_2465 | 22 |
| IMG_2467 | 22 |
| IMG_2472 | 23 |
| IMG_2473 | 23 |
| CONTACTS | 24 |
| Contact details | 24 |
| Telephones | 24 |
| Office hours | 24 |
| Address | 24 |

SPECIFICATIONS

Overview

This presents a uniquely scarce chance to acquire an “EU spec” Marlow 72E Trawler in a state primed for immediate use. AZURA originates from the initial German owner, in extremely well-preserved condition. She was designed keeping in mind lengthy, comfortable cruises and comes with an optional 13,000l (3,450 gal) long-distance fuel tank. In addition, she is outfitted with the elective 2x ONAN 22.5 kW generators and ASEA 16 kVA 60Hz to 50Hz Transformer. There are 4 guest cabins providing 8 berths, plus an extra cabin with twin beds aft for the skipper. We personally inspected and performed sea trials on the yacht in October 2023.

Basic Information

Category: trawler

Sub Category: Long Range Cruiser

Model Year: 2009

Year Built: 2009

Country: Germany

Dimensions

LOA: 76' 4" (23.25mm)

Beam: 20.24

Min Draft: 5' 2" (1.57mm)

Speed, Capacities and Weight

Water Capacity: 2000 Gallons

Holding Tank: 51.51 Gal Gallons

Fuel Capacity: 3434.24 Gal Gallons

Accommodations

Total Cabins: 4

Total Berths: 8

Sleeps: 8

Total Heads: 3

Crew Cabin: 2

Crew Berths: 2

Crew Heads: 1

Hull and Deck Information

Hull Material: Composite Fiberglass

Deck Material: GRP

Hull Configuration: Semi-Displacement

Hull Color: Flag Blue

Hull Designer: Doug Zurn

Exterior Designer: David Marlow

Engine Information

Engines: 2

Manufacturer: Caterpillar

Engine Type: Inboard

Fuel Type: Diesel

PHOTOS

DJI_0324



DJI_0328



DJI_0329



DJI_0331



DJI_0334



DJI_0335



DJI_0338



DJI_0340



DJI_0341



DJI_0342



DJI_0343



DJI_0345



DJI_0349



DJI_0350



DJI_0370



DJI_0383



DJI_0385



DJI_0388



DJI_0373



IMG_2373



IMG_2395



IMG_2388



IMG_2376



IMG_2387



IMG_2396



IMG_2386



IMG_2392



IMG_2358



IMG_2362



IMG_2415



IMG_2425



IMG_2417



IMG_2416



IMG_2423



IMG_2422



IMG_2421



IMG_2424



IMG_2404



IMG_2409



IMG_2408



IMG_2400



IMG_2402



IMG_2397



IMG_2287



IMG_2293



IMG_2295



IMG_2289



IMG_2291



IMG_2298



IMG_2288



IMG_2305



IMG_2297



IMG_2290



IMG_2292



IMG_2307



IMG_2318



IMG_2316



IMG_2319



IMG_2306



IMG_2308



IMG_2309



IMG_2311



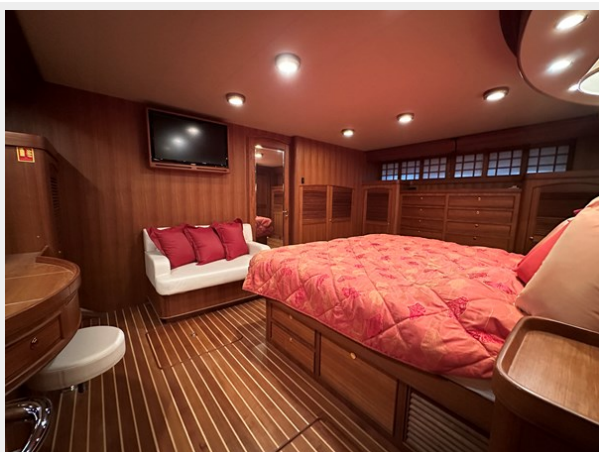
IMG_2243



IMG_2244



IMG_2245



IMG_2248



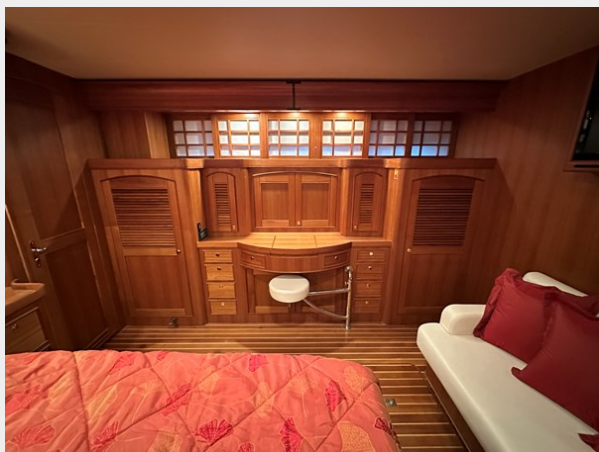
IMG_2249



IMG_2250



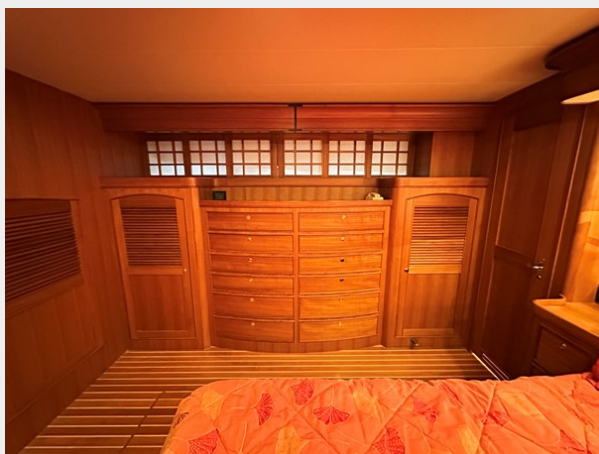
IMG_2251



IMG_2252



IMG_2253



IMG_2255



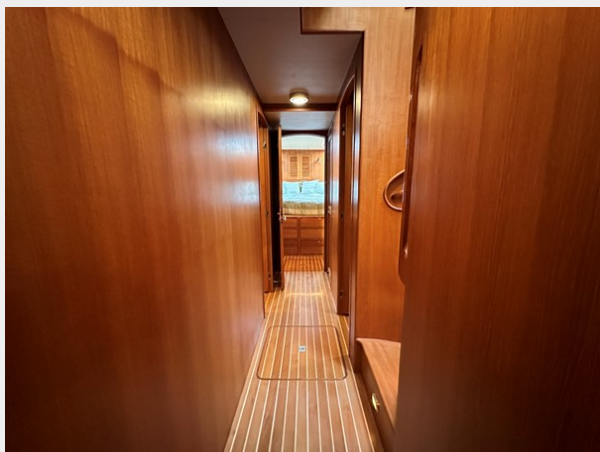
IMG_2257



IMG_2258



IMG_2262



IMG_2263



IMG_2264



IMG_2265



IMG_2266



IMG_2267



IMG_2282



IMG_2271



IMG_2274



IMG_2277



IMG_2281



IMG_2450



IMG_2453



IMG_2463



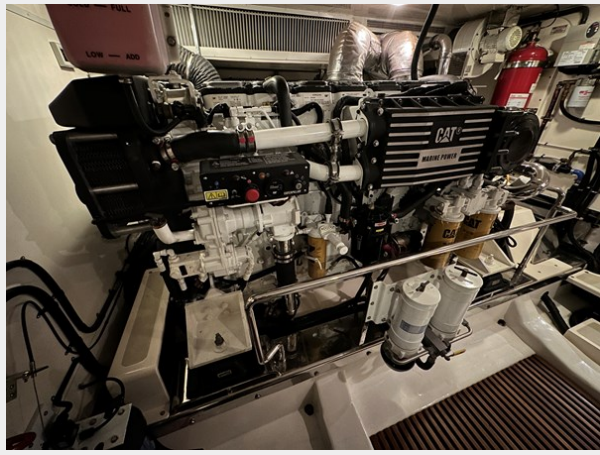
IMG_2465



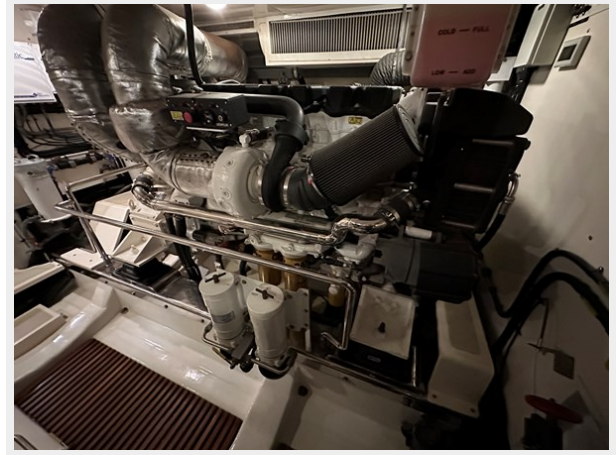
IMG_2467



IMG_2472



IMG_2473



CONTACTS

Andrey Shestakov, leading yacht broker of the sales department of Shestakov Yacht Sales Inc. Shestakov Yacht Sales Inc., the official representative of the Miami/Fort Lauderdale FL headquarters.

Contact details

Email: andrey@shestakovyachtsales.com

Web: shestakovyachtsales.com/en/

Telephones

USA: +1(954)274-4435

Office hours

Monday – Saturday: **9:00 - 21:00** EDT

Sunday: **closed**

Address



Harbour Towne Marina, 850 NE 3rd St,
STE 213, Dania, FL 33004