

## SUMMER SCHOOL — PURSUIT



**Builder:** PURSUIT

**Year Built:** 2000

**Model:** cruiser

**Price:** \$139,999 USD

**Location:** United States

**LOA:** 36' 4" (11.07mm)

**Beam:** 12.75

**Min Draft:** 2' 3" (0.66mm)

**Max Draft:** 3' 9" (1.14mm)

**Cruise Speed:** 21.72 Knots Kts. (25 MPH)

**Max Speed:** 34.76 Knots Kts. (40 MPH)

Our experienced yacht broker, Andrey Shestakov, will help you choose and buy a yacht that best suits your needs **SUMMER SCHOOL — PURSUIT** from **our catalogue**. Presently, at **Shestakov Yacht Sales Inc.**, we have a wide variety of yachts available on **our sale's list**. We also work in close contact with all the big **yacht manufacturers** from all over the world.

If you would like to buy a yacht **SUMMER SCHOOL — PURSUIT** or would like help answering any questions concerning purchasing, selling or chartering a yacht, please call **+1(954)274-4435**

# TABLE OF CONTENTS

TABLE OF CONTENTS	2
SPECIFICATIONS	5
Overview	5
Basic Information	5
Dimensions	5
Speed, Capacities and Weight	5
Accommodations	5
Hull and Deck Information	6
Engine Information	6
PHOTOS	7
2	7
3	7
4	7
5	7
6	7
7	7
8	8
9	8
10	8
11	8
12	8
13	8
14	9
15	9
16	9
17	9
20	10
19	10

---

21	10
22	10
24	10
23	10
25	11
26	11
28	11
27	11
30	12
29	12
32	12
31	12
33	13
34	13
35	13
36	13
38	13
37	13
39	14
40	14
41	14
42	14
43	14
44	14
47	15
48	15
183	15
CONTACTS	16
Contact details	16

---

Telephones	16
Office hours	16
Address	16

---

# SPECIFICATIONS

---

## Overview

---

*Summer School* is a Beautiful Fresh Water Example of the Classic Pursuit 3400 Express Cruiser. Sold new on Lake Michigan and always Fresh water kept. *Summer School* has always been stored indoors in heated storage, ensuring its excellent condition.

## Basic Information

---

**Category:** cruiser

**Sub Category:** Express

**Model Year:** 2000

**Year Built:** 2000

**Country:** United States

## Dimensions

---

**LOA:** 36' 4" (11.07mm)

**LWL:** 33' 9" (10.29mm)

**Beam:** 12.75

**Min Draft:** 2' 3" (0.66mm)

**Max Draft:** 3' 9" (1.14mm)

## Speed, Capacities and Weight

---

**Cruise Speed:** 21.72 Knots Kts. (25 MPH)

**Max Speed:** 34.76 Knots Kts. (40 MPH)

**Water Capacity:** 60 Gallons

**Holding Tank:** 30 Gal Gallons

**Fuel Capacity:** 350 Gal Gallons

## Accommodations

---

**Total Cabins:** 1

**Total Berths:** 4

**Total Heads:** 1

---

## Hull and Deck Information

---

**Hull Material:** Fiberglass

---

## Engine Information

---

**Engines:** 2

**Manufacturer:** Cummins

**Engine Type:** Inboard

**Fuel Type:** Diesel

# PHOTOS

2



3



4



5



6



7





8



9



10



11



12



13

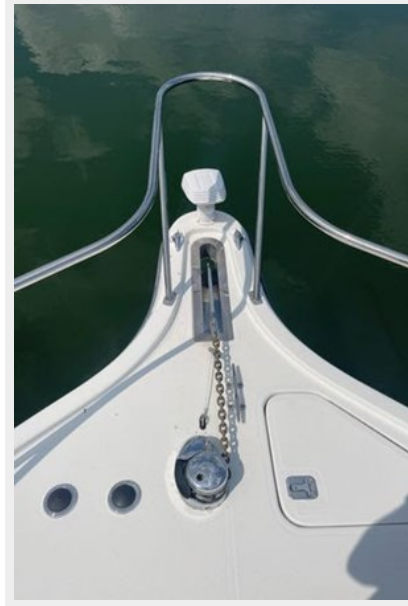




14



15



16



17



19



20



21



22



23



24





25



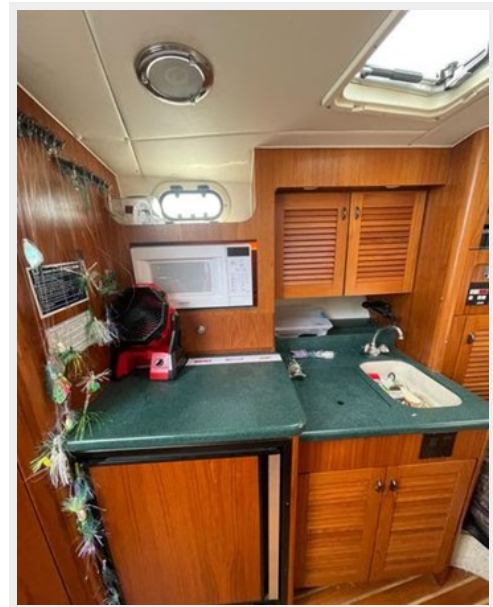
26



27



28



29



30



32



31





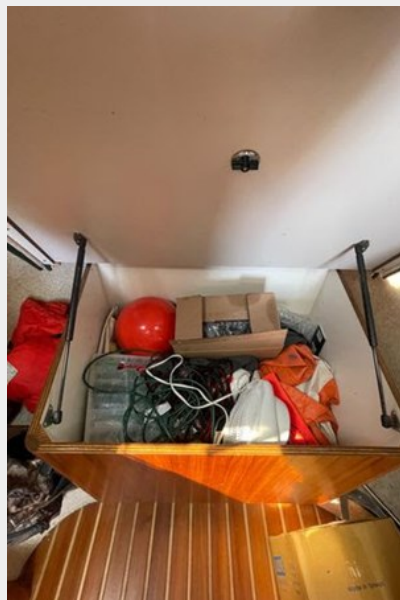
33



34



35



36



37



38





39



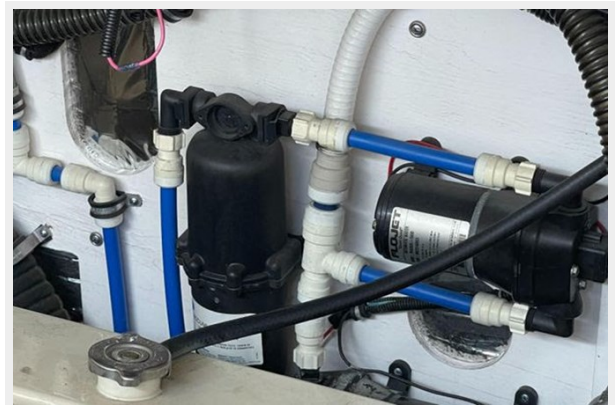
40



41



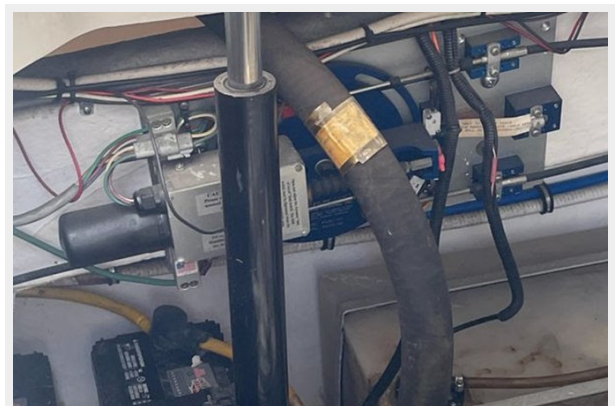
42



43



44



47



48



183



# CONTACTS

---

Andrey Shestakov, leading yacht broker of the sales department of Shestakov Yacht Sales Inc. Shestakov Yacht Sales Inc., the official representative of the Miami/Fort Lauderdale FL headquarters.

## Contact details

---

Email: **andrey@shestakovyachtsales.com**

Web: [shestakovyachtsales.com/en/](http://shestakovyachtsales.com/en/)

## Telephones

---

USA: **+1(954)274-4435**

## Office hours

---

Monday – Saturday: **9:00 - 21:00** EDT

Sunday: **closed**

## Address

---



Harbour Towne Marina, 850 NE 3rd St, STE 213, Dania, FL 33004