

GALANT LADY — MERIDIAN



Builder: MERIDIAN

Year Built: 2004

Model: Aft Cabin

Price: PRICE ON APPLICATION

Location: United States

LOA: 45' (13.72mm)

Beam: 14.33

Min Draft: 3' 6" (1.07mm)

Max Draft: 3' 9" (1.12mm)

Cruise Speed: 18 Knots Kts. (21 MPH)

Max Speed: 22 Knots Kts. (25 MPH)

Our experienced yacht broker, Andrey Shestakov, will help you choose and buy a yacht that best suits your needs **GALANT LADY — MERIDIAN** from our catalogue. Presently, at Shestakov Yacht Sales Inc., we have a wide variety of yachts available on our sale's list. We also work in close contact with all the big yacht manufacturers from all over the world.

If you would like to buy a yacht **GALANT LADY — MERIDIAN** or would like help answering any questions concerning purchasing, selling or chartering a yacht, please call **+1(954)274-4435**

TABLE OF CONTENTS

TABLE OF CONTENTS	2
SPECIFICATIONS	4
Overview	4
Basic Information	4
Dimensions	4
Speed, Capacities and Weight	5
Accommodations	5
Hull and Deck Information	5
Engine Information	5
PHOTOS	6
Guest Head	6
FWD Guest Stateroom	6
Electrical Panel	6
Galley	6
Galley	6
Aft Master Stateroom	6
Salon Stb Side/Dinnette	7
Salon Port Side	7
Salon Fwd	7
Salon Aft	7
Washer/Dryer	7
High/Low Table	7
Salon Recliners	8
Helm	8
Bridge Refrigerator	8
Cockpit Bar	8
CONTACTS	9
Contact details	9

Telephones	9
Office hours	9
Address	9

SPECIFICATIONS

Overview

For most yachts, the design process starts with the hull and deck, which are inked both for performance through the water and good looks by traditional standards, with the interior created later to fit that shell. In the case of the Meridian 459, I'd guess that the designers took the opposite route. First they assembled the features they wanted: two staterooms, a saloon, a galley, two large heads, a sundeck and a cockpit.

The 459 is the nautical version of the "cab forward" automobile that trades hood length for increased interior space. The 459 has interior volume in spades. This is a yacht that packs an incredible amount of living area and comfort into a surprisingly nimble package.

Dockside, the 459 is impressively tall, with side decks that loom far above head height amidships, drooping lower at the bow. The foredeck tilts forward, turning the usually horizontal sunpads into recliners, but putting the anchor roller at a reasonable height.

Basic Information

Category: Aft Cabin

Sub Category: Aft Cabin

Model Year: 2004

Year Built: 2004

Country: United States

Dimensions

LOA: 45' (13.72mm)

Beam: 14.33

Min Draft: 3' 6" (1.07mm)

Max Draft: 3' 9" (1.12mm)

Speed, Capacities and Weight

Cruise Speed: 18 Knots Kts. (21 MPH)

Cruise Speed Range: 200

Max Speed: 22 Knots Kts. (25 MPH)

Max Speed Range: 170 Kts.

Gross Tonnage: 28 Pounds

Water Capacity: 90 Gallons

Holding Tank: 55 Gal Gallons

Fuel Capacity: 250 Gal Gallons

Accommodations

Total Cabins: 2

Total Berths: 4

Sleeps: 4

Total Heads: 2

Hull and Deck Information

Hull Material: Fiberglass

Deck Material: Fiberglass

Hull Configuration: Planing

Hull Designer: Meridian Design

Interior Designer: Meridian Design

Engine Information

Engines: 2

Manufacturer: Cummins

Engine Type: Inboard

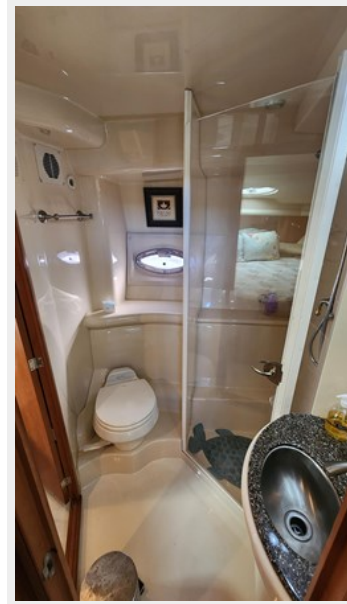
Fuel Type: Diesel

PHOTOS

FWD Guest Stateroom



Guest Head



Electrical Panel



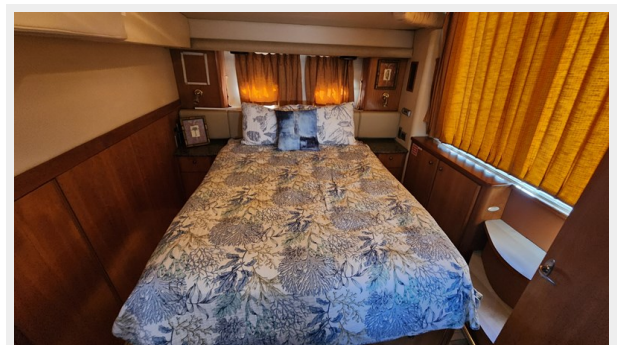
Galley



Galley



Aft Master Stateroom



Salon Stb Side/Dinnette



Salon Port Side



Salon Fwd



Salon Aft



Washer/Dryer



High/Low Table



Salon Recliners



Helm



Bridge Refrigerator



Cockpit Bar



CONTACTS

Andrey Shestakov, leading yacht broker of the sales department of Shestakov Yacht Sales Inc. Shestakov Yacht Sales Inc., the official representative of the Miami/Fort Lauderdale FL headquarters.

Contact details

Email: andrey@shestakovyachtsales.com

Web: shestakovyachtsales.com/en/

Telephones

USA: +1(954)274-4435

Office hours

Monday – Saturday: **9:00 - 21:00** EDT

Sunday: **closed**

Address



Harbour Towne Marina, 850 NE 3rd St,
STE 213, Dania, FL 33004