

REDEMPTION — SEA RAY



Builder: SEA RAY

Year Built: 1993

Model: Flybridge

Price: \$45,500 USD

Location: United States

LOA: 36' 10" (11.23mm)

Beam: 12.33

Max Draft: 2' 7" (0.79mm)

Our experienced yacht broker, Andrey Shestakov, will help you choose and buy a yacht that best suits your needs **Redemption — SEA RAY** from our catalogue. Presently, at Shestakov Yacht Sales Inc., we have a wide variety of yachts available on our sale's list. We also work in close contact with all the big yacht manufacturers from all over the world.

If you would like to buy a yacht **Redemption — SEA RAY** or would like help answering any questions concerning purchasing, selling or chartering a yacht, please call **+1(954)274-4435**

TABLE OF CONTENTS

TABLE OF CONTENTS	2
SPECIFICATIONS	5
Overview	5
Basic Information	5
Dimensions	5
Speed, Capacities and Weight	6
Accommodations	6
Hull and Deck Information	6
Engine Information	6
PHOTOS	7
2	7
3	7
4	7
5	7
6	7
7	7
8	8
9	8
10	8
11	8
12	8
13	8
14	9
15	9
16	9
17	9
18	9
19	9

20	10
21	10
22	10
23	10
24	10
25	10
26	11
27	11
28	11
29	11
30	11
31	11
32	12
33	12
34	12
35	12
36	12
37	12
38	13
39	13
40	13
41	13
42	13
43	13
44	14
45	14
46	14
47	14
48	14

49	14
CONTACTS	15
Contact details	15
Telephones	15
Office hours	15
Address	15

SPECIFICATIONS

Overview

This Sea Ray 370 Sedan has a ton of room inside and out. It features a Spacious Flybridge with Wrap Around Seating, a nice Cockpit Deck, a Split Level Interior with a Large Salon, Lower Helm, and an Excellent Galley.

The Two Stateroom galley down layout makes this 37 feel much bigger than other boats of its class.

She is Powered by Twin MerCruiser 7.4s. This boat is spacious enough to be used as a live aboard, traveling cruiser, or just a weekender.

A Brand New Isinglass Flybridge Full Enclosure with Additional Screen Panels was just installed.

Recent Survey Available Upon Request

Please check the FULL SPECS for more details, and give us a call for more information, and to schedule an appointment to have a look for yourself!

Basic Information

Category: Flybridge

Sub Category: Flybridge

Model Year: 1993

Year Built: 1993

Country: United States

Dimensions

LOA: 36' 10" (11.23mm)

Beam: 12.33

Max Draft: 2' 7" (0.79mm)

Speed, Capacities and Weight

Water Capacity: 70 Gallons

Holding Tank: 20 Gal Gallons

Fuel Capacity: 250 Gal Gallons

Accommodations

Total Cabins: 2

Total Heads: 1

Hull and Deck Information

Hull Material: Fiberglass

Engine Information

Engines: 2

Manufacturer: Mercruiser

Engine Type: Inboard

Fuel Type: Gas/Petrol

PHOTOS

2



3



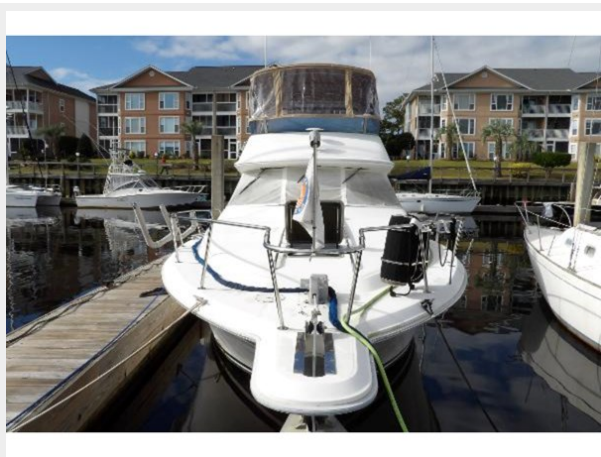
4



5



6



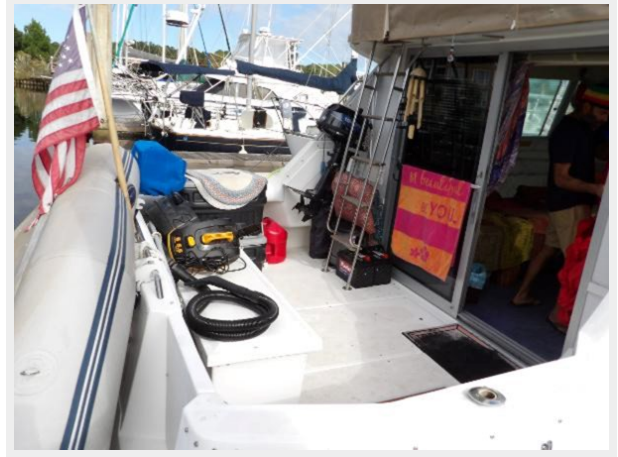
7



8



9



10



11



12



13



14



15



16



17



18



19



20



21



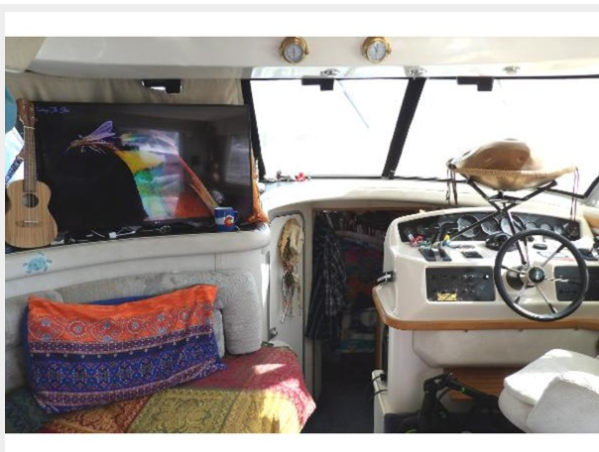
22



23



24



25



26



27



28



29



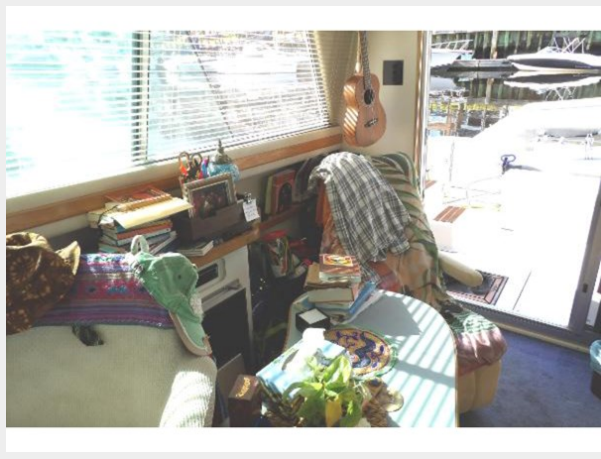
30



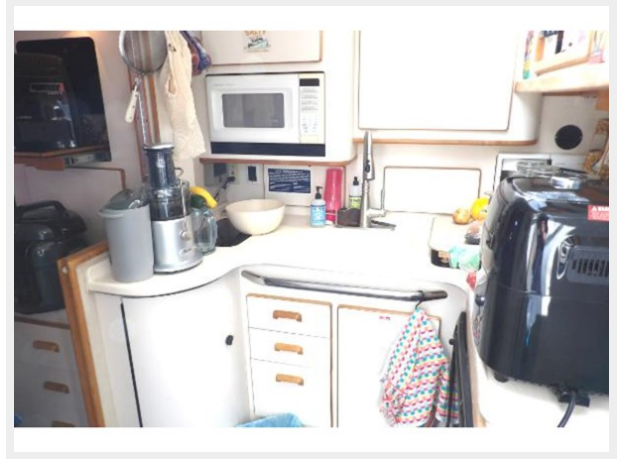
31



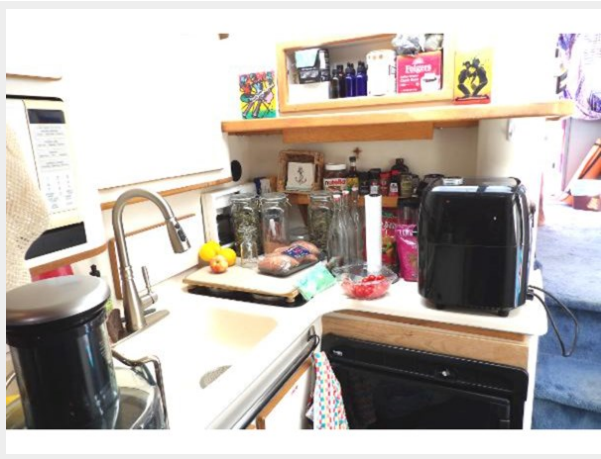
32



33



34



35



36



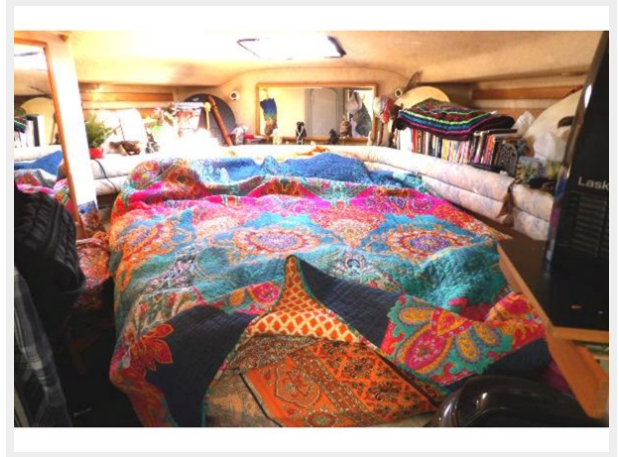
37



38



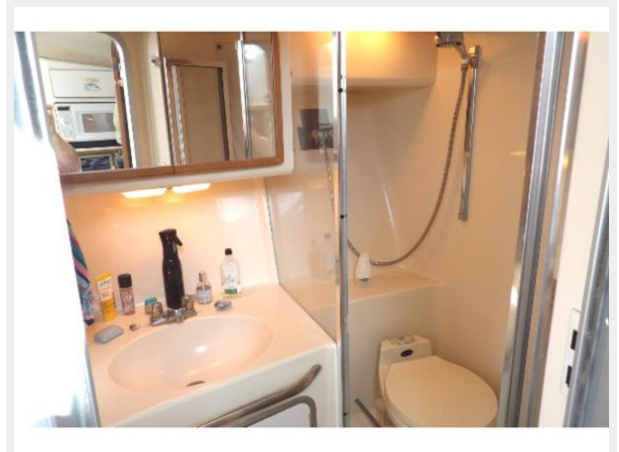
39



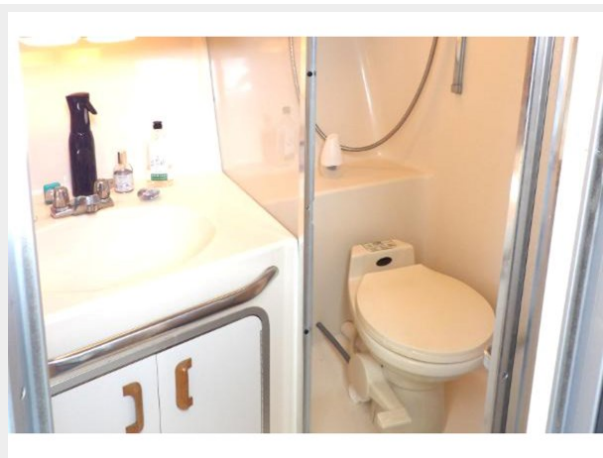
40



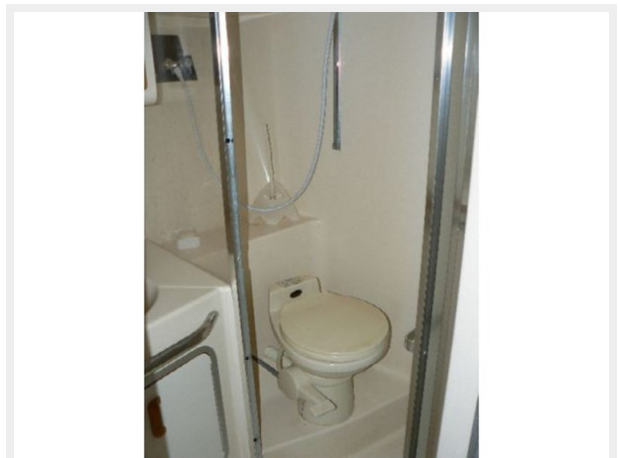
41



42



43



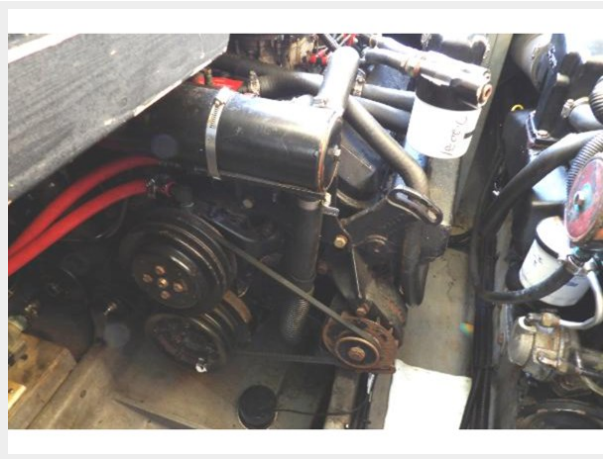
44



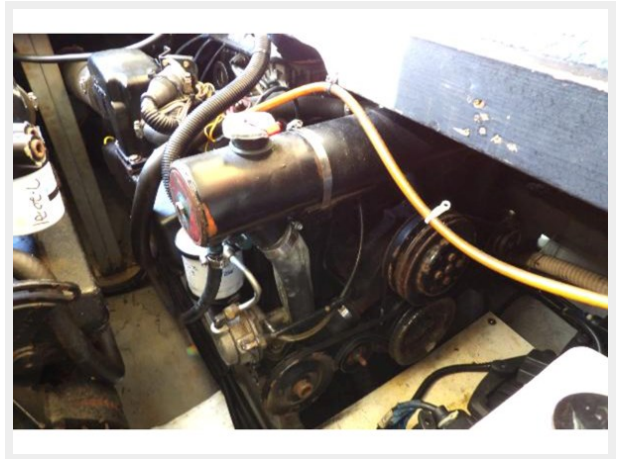
45



46



47



48



49



CONTACTS

Andrey Shestakov, leading yacht broker of the sales department of Shestakov Yacht Sales Inc. Shestakov Yacht Sales Inc., the official representative of the Miami/Fort Lauderdale FL headquarters.

Contact details

Email: andrey@shestakovyachtsales.com

Web: shestakovyachtsales.com/en/

Telephones

USA: +1(954)274-4435

Office hours

Monday – Saturday: **9:00 - 21:00** EDT

Sunday: **closed**

Address



Harbour Towne Marina, 850 NE 3rd St,
STE 213, Dania, FL 33004