

LIBERTY — BERING YACHTS



Builder: BERING YACHTS

Year Built: 2019

Model: expedition yacht

Price: PRICE ON APPLICATION

Location: United States

LOA: 70' (21.34mm)

Beam: 18.37

Min Draft: 6' 3" (1.9mm)

Max Draft: 6' 3" (1.9mm)

Cruise Speed: 8.5 Knots Kts. (10 MPH)

Max Speed: 10 Knots Kts. (12 MPH)

Our experienced yacht broker, Andrey Shestakov, will help you choose and buy a yacht that best suits your needs **Liberty — BERING YACHTS** from our catalogue. Presently, at Shestakov Yacht Sales Inc., we have a wide variety of yachts available on our sale's list. We also work in close contact with all the big yacht manufacturers from all over the world.

If you would like to buy a yacht **Liberty — BERING YACHTS** or would like help answering any questions concerning purchasing, selling or chartering a yacht, please call **+1(954)274-4435**

TABLE OF CONTENTS

TABLE OF CONTENTS	2
SPECIFICATIONS	4
Overview	4
Basic Information	4
Dimensions	5
Speed, Capacities and Weight	5
Accommodations	5
Hull and Deck Information	5
Engine Information	6
PHOTOS	7
IMG_2858	7
Master	7
Galley	7
IMG_2871	7
Cockpit	7
Salon	7
IMG_2859	8
IMG_2860	8
IMG_2861	8
IMG_2862	8
IMG_2864	8
IMG_2863	8
IMG_2865	9
Pilot House	9
Flybridge	9
cockpit	9
cockpit	9
Flybridge	9

master	10
CONTACTS	11
Contact details	11
Telephones	11
Office hours	11
Address	11

SPECIFICATIONS

Overview

2019 Bering 70 The Bering 70 is the debut model for Bering's Yachtship series. She Has been launched at the end of January 2019 and is available for immediate sale. Like all of Bering's models she has been designed from the keel up to be a superb oceanic travel and ideal for extensive coastal cruising. Her hull shape and profile let you easily recognize that the Bering 70 is an atypical motor yacht that is incredibly stylish. A

reverse-raked bow is seldom seen in yacht designs of this size. The absence of a large overhanging bow means that there is less reserve buoyancy to create lift when making contact with an approaching wave. This in turn leads to the hull "slicing" through waves as opposed to riding up and over, thereby dampening pitch at sea. The end result, a smoother ride for everyone on board. Similarly, her contemporary interior design is a departure from the more traditional styling found on many of today's long distance motor yachts, but her capabilities are that of a true blue water traveler. Featuring a pilothouse deck, full displacement hull and a range of over 2,500 nautical miles she's ready to carry you and your guests to far away destination. Bering 70-004's quick summary is: steel hull, composite superstructure, three stateroom layout, Corian countertops, Seakeeper M16 Gyro Stabilizer, twin 305 HP Cummins engines, two 8 person life rafts, hydraulic crane, nav/com electronics package in the wheelhouse. She is a 24V boat with two Victron 5 KW inverter/chargers, 230 V, 50Hz, 63 amp shore power, 21.5 kW and 17.0 kW Onan generators. The Bering 70 is designed with a displacement of 140,000 pounds, carries over 1,260 gallons of fuel and can cruise for 2,500 miles.

Current Engine Hours are 1800h on both

Generators are both at 0 hours (full rebuild)

Basic Information

Category: expedition yacht

Sub Category: Expedition or Explorer

Model Year: 2019

Year Built: 2019

Country: United States

Dimensions

LOA: 70' (21.34mm)**Beam:** 18.37**Min Draft:** 6' 3" (1.9mm)**Max Draft:** 6' 3" (1.9mm)

Speed, Capacities and Weight

Cruise Speed: 8.5 Knots Kts. (10 MPH)**Cruise Speed Range:** 2500**Max Speed:** 10 Knots Kts. (12 MPH)**Max Speed Range:** 2500 Kts.**Gross Tonnage:** 46.3 Pounds**Water Capacity:** 900 Gallons**Holding Tank:** 400 Gal Gallons**Fuel Capacity:** 5820 Gal Gallons

Accommodations

Total Cabins: 3**Total Berths:** 3**Sleeps:** 6**Total Heads:** 3**Crew Cabin:** 2**Crew Berths:** 2**Crew Heads:** 1

Hull and Deck Information

Hull Material: Aluminum**Deck Material:** Teak**Hull Configuration:** Full Displacement**Hull Designer:** Bering Design Team**Interior Designer:** Bering Design Team

Engine Information

Engines: 2

Manufacturer: Cummins

Engine Type: Inboard

Fuel Type: Diesel

PHOTOS

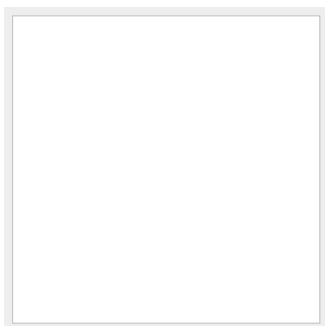
IMG_2858



Master



IMG_2871



Galley



Salon



Cockpit



IMG_2859



IMG_2860



IMG_2861



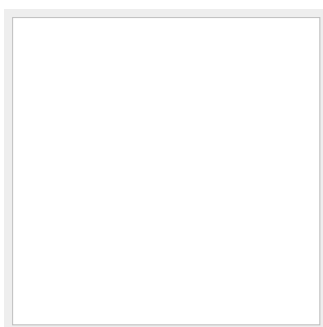
IMG_2862



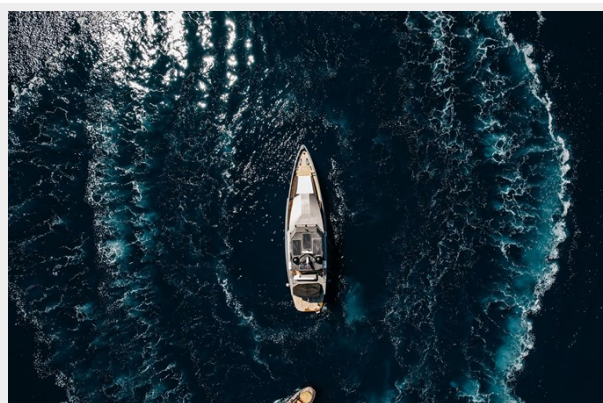
IMG_2864



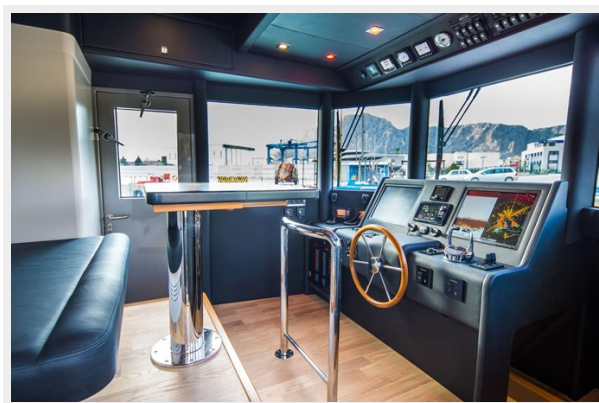
IMG_2863



IMG_2865



Pilot House



Flybridge



cockpit



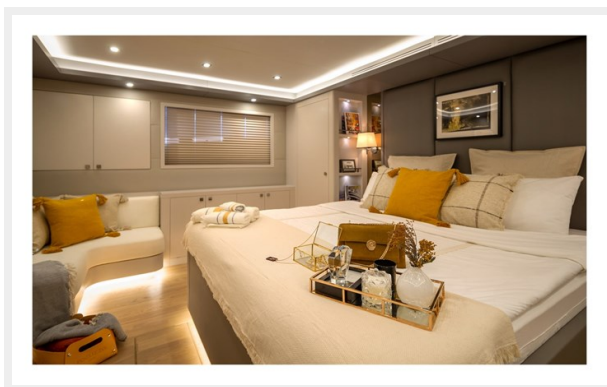
cockpit



Flybridge



master



CONTACTS

Andrey Shestakov, leading yacht broker of the sales department of Shestakov Yacht Sales Inc. Shestakov Yacht Sales Inc., the official representative of the Miami/Fort Lauderdale FL headquarters.

Contact details

Email: **andrey@shestakovyachtsales.com**

Web: shestakovyachtsales.com/en/

Telephones

USA: **+1(954)274-4435**

Office hours

Monday – Saturday: **9:00 - 21:00 EDT**

Sunday: **closed**

Address



Harbour Towne Marina, 850 NE 3rd St,
STE 213, Dania, FL 33004