

ATLAS — CANTIERE DELLE MARCHE



Builder: CANTIERE DELLE MARCHE

Year Built: 2017

Model: expedition yacht

Price: \$11,750,000 USD

Location: United States

LOA: 102' (31.09mm)

Beam: 24.25

Min Draft: 8' (2.44mm)

Max Draft: 9' 1" (2.77mm)

Cruise Speed: 10 Knots Kts. (12 MPH)

Max Speed: 13 Knots Kts. (15 MPH)

Our experienced yacht broker, Andrey Shestakov, will help you choose and buy a yacht that best suits your needs **Atlas — CANTIERE DELLE MARCHE** from our catalogue. Presently, at Shestakov Yacht Sales Inc., we have a wide variety of yachts available on our sale's list. We also work in close contact with all the big yacht manufacturers from all over the world.

If you would like to buy a yacht **Atlas — CANTIERE DELLE MARCHE** or would like help answering any questions concerning purchasing, selling or chartering a yacht, please call **+1(954)274-4435**

TABLE OF CONTENTS

TABLE OF CONTENTS	2
SPECIFICATIONS	5
Overview	5
Basic Information	6
Dimensions	6
Speed, Capacities and Weight	6
Accommodations	6
Hull and Deck Information	7
Engine Information	7
PHOTOS	8
IMG_2475	8
DJI_0219 (1)	8
IMG_2477	8
IMG_2476	8
IMG_2480	9
IMG_2481	9
IMG_2483	9
IMG_2482	9
IMG_2484	10
IMG_2488	10
IMG_2489	10
IMG_2490	10
IMG_2492	10
IMG_2493	10
IMG_2505	11
IMG_2496	11
IMG_2507	11
IMG_2506	11

IMG_2509	12
IMG_2511	12
IMG_2515	12
IMG_2512	12
IMG_2516	13
IMG_2517	13
IMG_2518	13
IMG_2519	13
IMG_2520	14
IMG_2521	14
IMG_2522	14
IMG_2523	14
IMG_2524	15
IMG_2525	15
IMG_2526	15
IMG_2527	15
IMG_2528	16
IMG_2529	16
IMG_2530	16
IMG_2531	16
IMG_2532	17
IMG_2533	17
IMG_2534	17
IMG_2535	17
IMG_2536	18
IMG_2537	18
IMG_2538	18
IMG_2539	18
IMG_2540	19

IMG_2543	19
IMG_2544	19
IMG_2545	19
IMG_2546	20
IMG_2547	20
IMG_2548	20
IMG_2553	20
IMG_2554	21
IMG_2555	21
IMG_2557	21
IMG_2561	21
IMG_2570	21
IMG_6323	21
IMG_6324	22
IMG_6325	22
IMG_6326	22
IMG_6327	22
IMG_6361	23
IMG_6368	23
Unknown-7	23
CONTACTS	24
Contact details	24
Telephones	24
Office hours	24
Address	24

SPECIFICATIONS

Overview

M/Y ATLAS is a 102 ft steel and aluminum Explorer vessel, the third of the fortunate Darwin Class series to hit the water. Built in compliance with LY3 regulations, she boasts a series of interesting customizations, both with regards to function and design. The already ample spaces were specifically designed and re-proportioned in height, exceeding the already excellent standards of all the Darwin Class Explorer yachts. The technical standards that have made CdM a benchmark in its sector have been maintained: 12mm steel hull, cupronickel piping, independent rudders, automatic generator parallel (3 generators), electric fins stabilizers, as well as wastewater treatment systems for black, gray, and bilge waters that have been adapted from the world of work ships and designed to be used 24/365. In order to let the owners live an active life while enjoying the oceans and their sailing destinations, careful attention was dedicated to the layout of the garage, designed to hold numerous toys and transportation vehicles, as well as a complete diving center. The sundeck was custom designed for both a lounge area - with a big sofa with up/down tables, a bar in the center full optional equipped for cooking and cocktails - and for the wellness: a fully-equipped open-air fitness area with a pool so to keep up with their daily workout routines, even when the owners are at sea and far away from their regular gym. M/Y ATLAS's interior design style is warm and welcoming. The walnut wood tones find their perfect complement in the Poltrona Frau leather that covers 90% of the walls in all the yacht. The theme is pairing classical style and modern touches, especially in accessories and free standing pieces of furniture, like Minotti and Baxter pieces, that offer a tremendous visual impact in terms of aesthetics. The briefing for the kitchen was to emphasise the light from the large windows, so the choice has been the use of white with stainless steel for all accessories and appliances, included a blast-chiller freezer, a water dispenser and a double wash area. The yacht hosts a total of four cabins for the guests (Master, one VIP, and two guest cabins) plus two crew cabins and one Captain's double cabin adjacent to the cockpit. For an higher level of service to Owners and guests, the laundry cabin in the crew area could be easily refitted into a third crew cabin. This exceptional explorer vessels offer unparalleled level of comfort, luxury, and performances encompassed into a robust steel cocoon. Our commitment to providing the utmost in accommodations has led us to optimize and expand various aspects of the Darwin Class concept to ensure extraordinary and safe voyages to the most remote areas of the world. All Darwin 102 boast state-of-the-art amenities and each one is designed and built to cater to the diverse interests and needs of their Owners.

Basic Information

Category: expedition yacht

Sub Category: Expedition or Explorer

Model Year: 2017

Year Built: 2017

Country: United States

Dimensions

LOA: 102' (31.09mm)

Beam: 24.25

Min Draft: 8' (2.44mm)

Max Draft: 9' 1" (2.77mm)

Speed, Capacities and Weight

Cruise Speed: 10 Knots Kts. (12 MPH)

Cruise Speed Range: 4500

Max Speed: 13 Knots Kts. (15 MPH)

Max Speed Range: 3000 Kts.

Gross Tonnage: 243 Pounds

Water Capacity: 6000 Gallons

Holding Tank: 290.59 Gal Gallons

Fuel Capacity: 10566.88 Gal Gallons

Accommodations

Total Cabins: 4

Total Berths: 10

Sleeps: 10

Total Heads: 6

Crew Cabin: 5

Crew Berths: 5

Crew Heads: 3

Hull and Deck Information

Hull Material: Steel

Deck Material: Teak

Hull Configuration: Bulb Keel

Hull Color: light grey

Hull Designer: Hydro Tec

Exterior Designer: CDM

Interior Designer: CDM

Engine Information

Engines: 2

Manufacturer: Caterpillar

Fuel Type: Diesel

PHOTOS

DJI_0219 (1)



IMG_2475



IMG_2476



IMG_2477



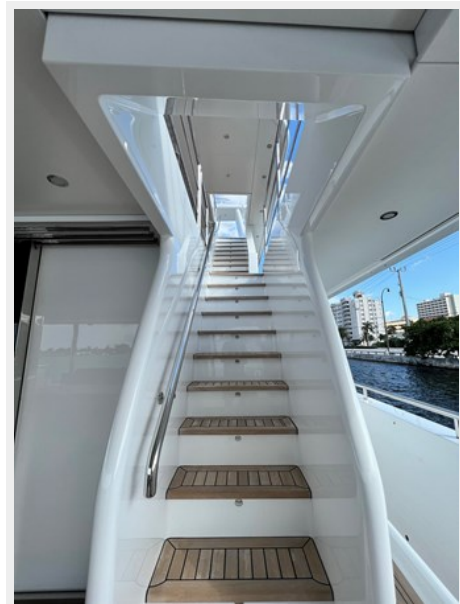
IMG_2480



IMG_2481



IMG_2483



IMG_2482



IMG_2484



IMG_2488



IMG_2489



IMG_2490



IMG_2492



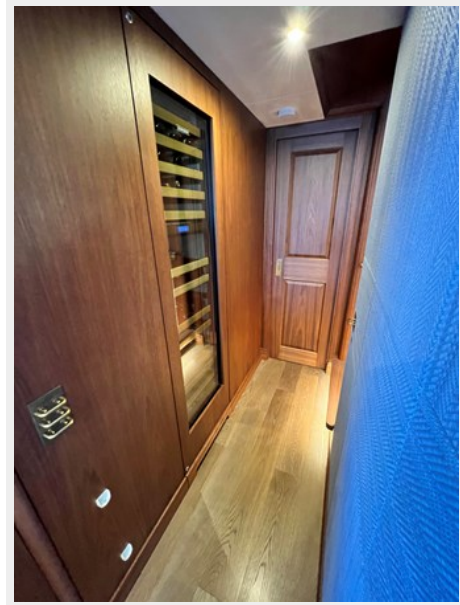
IMG_2493



IMG_2496



IMG_2505



IMG_2506



IMG_2507



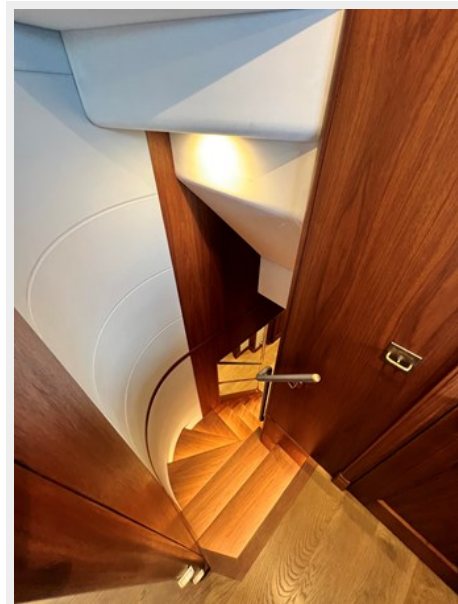
IMG_2509



IMG_2511



IMG_2515



IMG_2512



IMG_2516



IMG_2517



IMG_2518



IMG_2519



IMG_2520



IMG_2521



IMG_2522



IMG_2523



IMG_2524



IMG_2525



IMG_2526



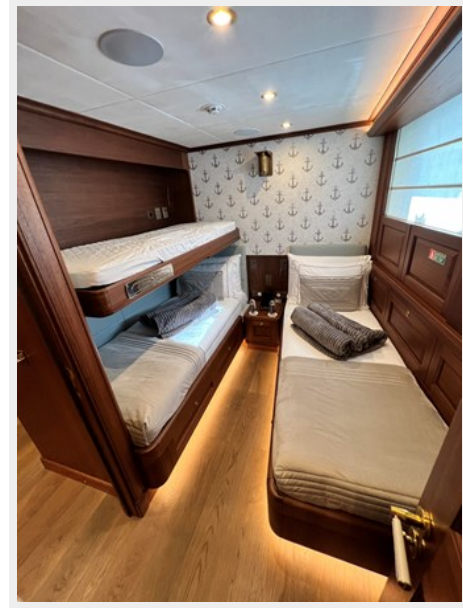
IMG_2527



IMG_2528



IMG_2529



IMG_2530



IMG_2531



IMG_2532



IMG_2533



IMG_2534



IMG_2535



IMG_2536



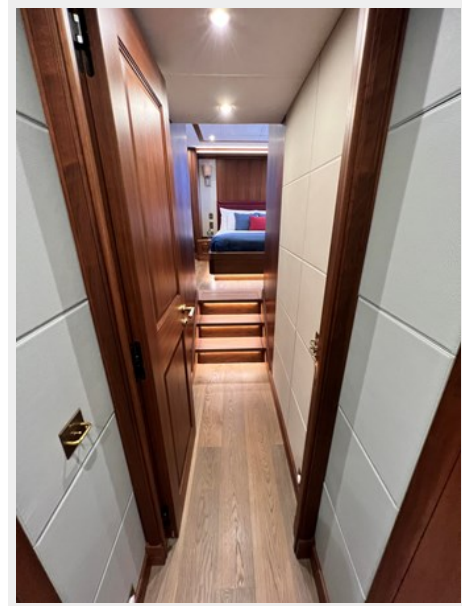
IMG_2537



IMG_2538



IMG_2539



IMG_2540



IMG_2543



IMG_2544



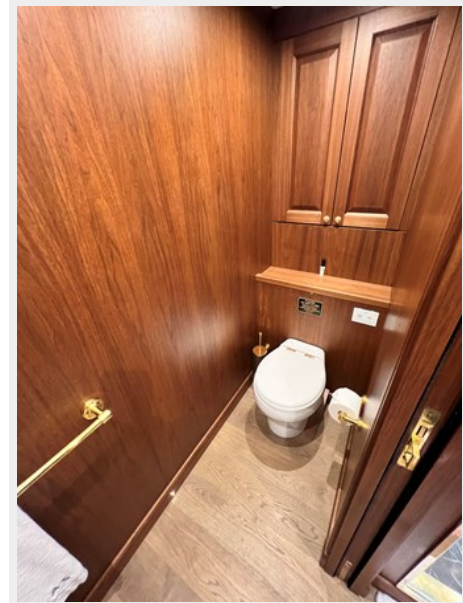
IMG_2545



IMG_2546



IMG_2547



IMG_2548



IMG_2553



IMG_2554



IMG_2555



IMG_2557



IMG_2561



IMG_2570



IMG_6323



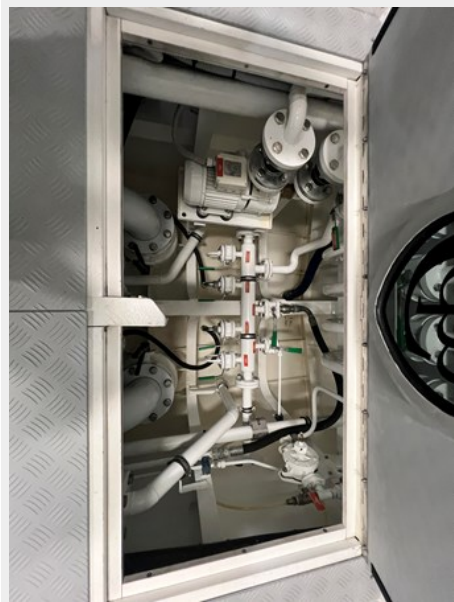
IMG_6324



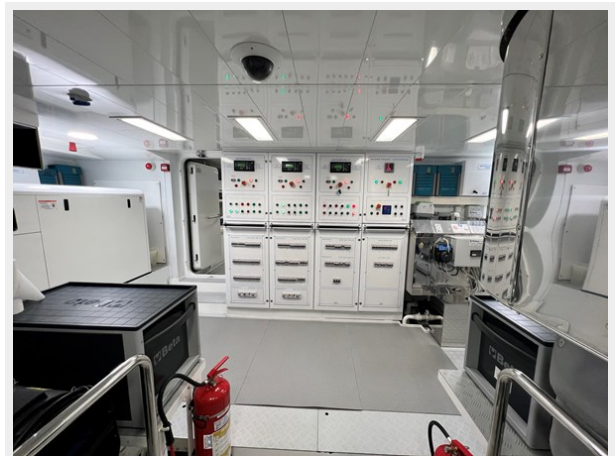
IMG_6325



IMG_6326



IMG_6327



IMG_6361



IMG_6368



Unknown-7



CONTACTS

Andrey Shestakov, leading yacht broker of the sales department of Shestakov Yacht Sales Inc. Shestakov Yacht Sales Inc., the official representative of the Miami/Fort Lauderdale FL headquarters.

Contact details

Email: andrey@shestakovyachtsales.com

Web: shestakovyachtsales.com/en/

Telephones

USA: +1(954)274-4435

Office hours

Monday – Saturday: **9:00 - 21:00** EDT

Sunday: **closed**

Address



Harbour Towne Marina, 850 NE 3rd St,
STE 213, Dania, FL 33004